

SECTION 21 T. 7 N. R. 11 W. 3rd P.M.

DAVID & DIANE WENDELL

STUMPE BROS.

Sta. 10+39 - C Rwdy. at C Structure  
 Proposed Structure: Single Span Precast Prestressed Concrete Deck Beams (21") on Open Concrete Abutments, 27'-0" Out.-Out. Deck, 54'-0" Bk.-Bk. Abutments. Steel Railing Type S1. 15' Skew Lt. Forward.

Traffic Barrier Terminal  
 Types 1 (BLR 23) & 5A  
 (N.W. & S.E. Corners)

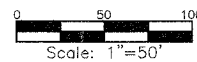
Install New 24" x 36" Pipe  
 Culverts, Class D, Type 1  
 Inlet - El. 95.0  
 Outlet - El. 94.3

Install New 36" x 44" Pipe  
 Culverts, Class D, Type 2  
 Inlet - El. 94.4  
 Outlet - El. 93.0

Install New 15" x 26" Pipe  
 Culverts, Class D, Type 1  
 Inlet - El. 97.6  
 Outlet - El. 96.8

**CURVE DATA**  
 P.I. Sta. 10+96.25  
 $\Delta = 16'15'48"$   
 $D = 12'11'26"$   
 $T = 67.16'$   
 $R = 470.00'$   
 $L = 133.41'$   
 $E = 4.77'$   
 P.C. Sta. 10+29.09  
 P.T. Sta. 11+62.50  
 S.E. = None

---OEI--- Indicates Overhead Electric



RTE.	SECTION	COUNTY	TOTAL SHEETS	SHEET NO.
T.R.140	*	JERSEY	8	3
PROJECT BROS-083(039)				
CONTRACT NO. 97292 * 05-05112-00-BR				

**SCHEDULE**  
**TREE REMOVAL 6 TO 15 UNITS**

Location	Quantity (Units)
Sta. 10+51 21' Lt.	6
Sta. 10+51 22' Lt.	12
Sta. 10+51 23' Lt.	6
Sta. 10+52 21' Lt.	12
Sta. 10+52 22' Lt.	12
Sta. 10+86 34' Lt.	6
Sta. 10+86 35' Lt.	6
Sta. 11+24 30' Lt.	15
Sta. 11+39 34' Lt.	12
Sta. 10+56 22' Rt.	6
Sta. 10+56 23' Rt.	6
Sta. 10+56 24' Rt.	6
Sta. 11+22 41' Rt.	15
Sta. 11+31 30' Rt.	15
<b>Total</b>	<b>135</b>

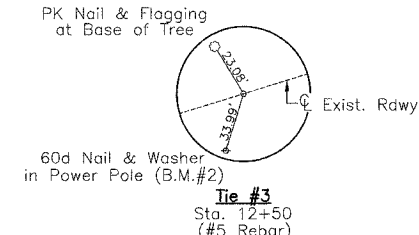
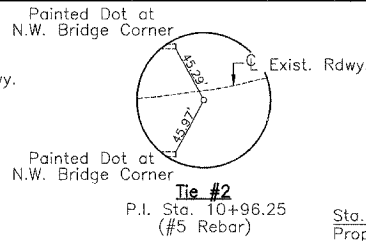
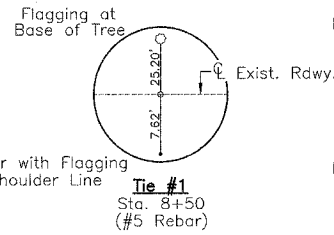
**SCHEDULE**  
**TREE REMOVAL OVER 15 UNITS**

Location	Quantity (Units)
Sta. 10+85 34' Lt.	24
Sta. 10+86 36' Lt.	30
Sta. 11+21 40' Rt.	30
Sta. 11+22 40' Rt.	24
<b>Total</b>	<b>108</b>

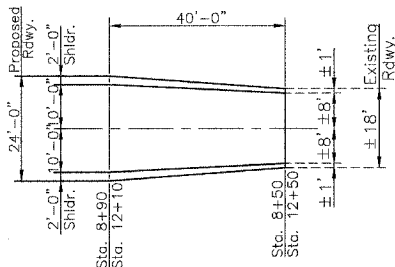
**UTILITIES**

Frontier Communications  
 225 N. Broad St.  
 Carlinville, Illinois 62626  
 1-217-854-4013  
 M.J.M. Electric Cooperative, Inc.  
 P.O. Box 80  
 Carlinville, Illinois 62626  
 1-217-854-3137  
 Jersey County Rural Water  
 1009 E. Shipman Road  
 Jerseyville, Illinois 62052  
 1-618-498-9534

Benchmarks: BM#1 - 60d Nail & Washer in Power Pole  
 16.5' Rt. Sta. 9+71 El. 100.00 (Assumed)  
 BM#2 - 60d Nail & Washer in Power Pole  
 23' Rt. Sta. 12+25 El. 102.39

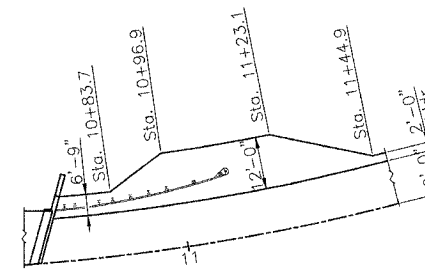


**SHOULDER WIDENING PLAN**  
 (S.E. Corner)

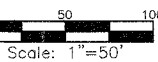


**ROADWAY TRANSITION DETAIL**

**SHOULDER WIDENING PLAN**  
 (N.W. Corner)



**PLAN**



**PROFILE**

Earth Excavation - 128 Cu. Yds.  
 \* Furnished Excavation - 0 Cu. Yds.  
 Embankment - 219 Cu. Yds.

\* Excess Channel Excavation of 119 Cu. Yds. will be used from Sta. 8+50 to Sta. 10+12

Earth Excavation - 211 Cu. Yds.  
 Furnished Excavation - 0 Cu. Yds.  
 Embankment - 154 Cu. Yds.

FILE NAME: JC-408P (REV. 12/12/06)

**PLAN & PROFILE**  
**T.R. 140 OVER BRANCH OF**  
**LITTLE PIASA CREEK**  
**MISSISSIPPI TOWNSHIP**  
**SECTION 05-05112-00-BR**  
**JERSEY COUNTY**