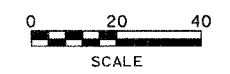
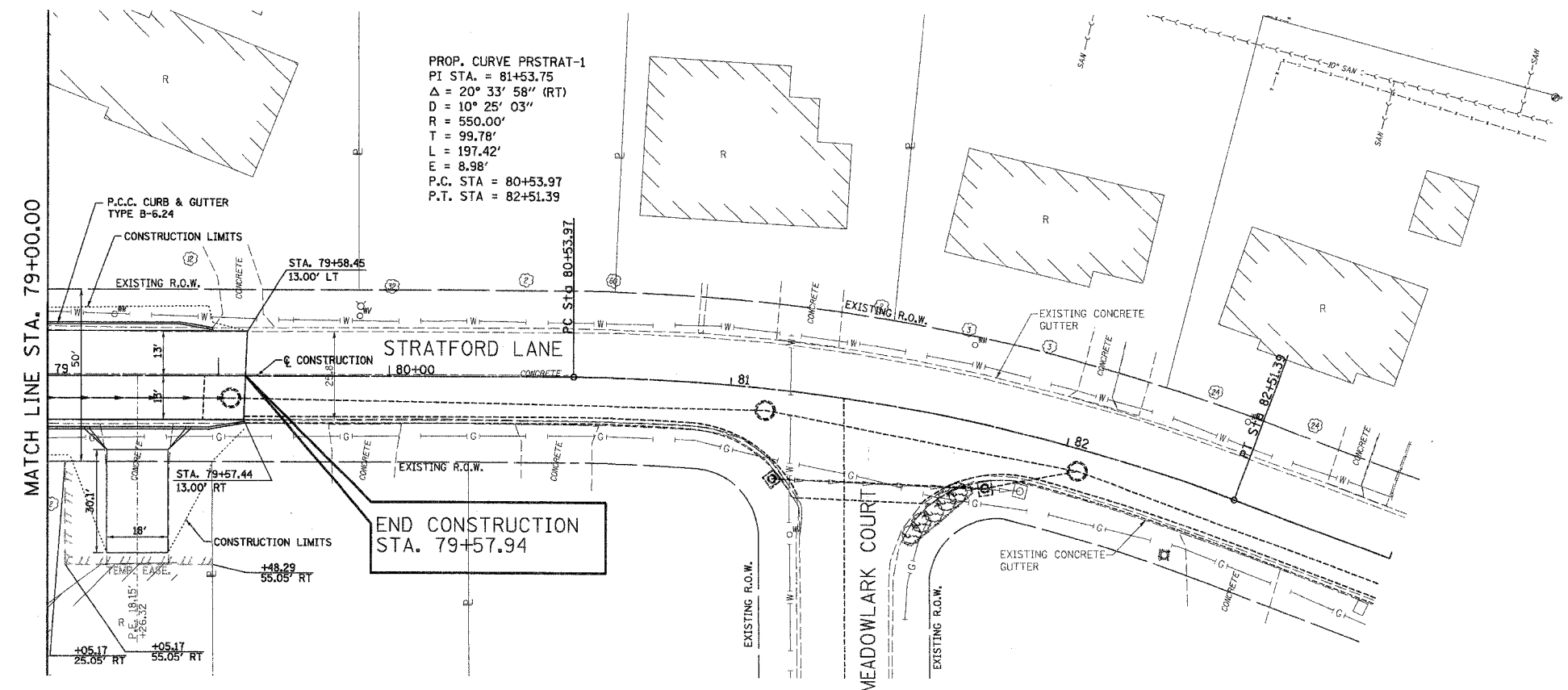


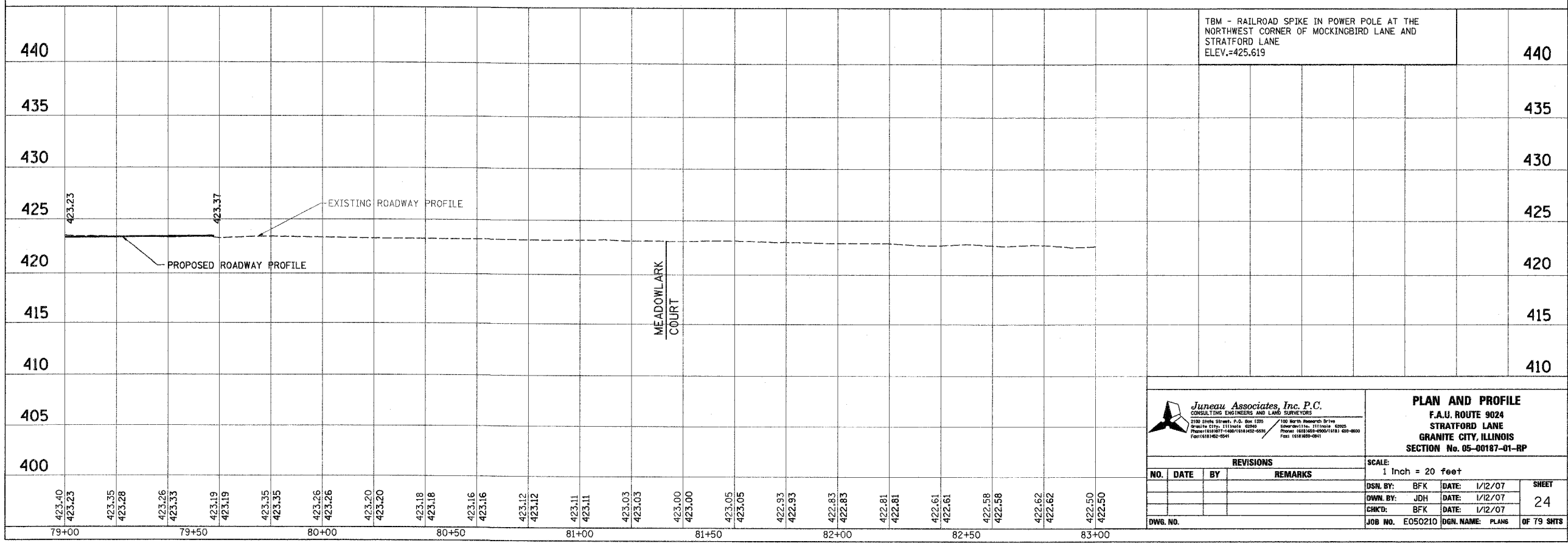
F.A.U. RTE.	SECTION	COUNTY	TOTAL SHEETS	SHEET NO.
9024	05-00187-01-RP	MADISON	79	24
FED. ROAD DIST. NO. ILLINOIS FED. AID PROJECT				
CONTRACT NO. 97298				

PROP. CURVE PRSTRAT-1
 PI STA. = 81+53.75
 $\Delta = 20^\circ 33' 58''$ (RT)
 $D = 10^\circ 25' 03''$
 $R = 550.00'$
 $T = 99.78'$
 $L = 197.42'$
 $E = 8.98'$
 P.C. STA = 80+53.97
 P.T. STA = 82+51.39



FINAL SURVEY	BY	DATE
NOTE BOOK		
TELEPLATE		
AREAS CHECKED		
NO.		

ORIGINAL SURVEY	BY	DATE
NOTE BOOK		
TELEPLATE		
AREAS CHECKED		
NO.		



TBM - RAILROAD SPIKE IN POWER POLE AT THE NORTHWEST CORNER OF MOCKINGBIRD LANE AND STRATFORD LANE
 ELEV.=425.619

Juneau Associates, Inc. P.C.
 CONSULTING ENGINEERS AND LAND SURVEYORS
 2100 State Street, S.E. Box 120
 Granite City, Illinois 62040
 Phone: (618) 937-1400 FAX: (618) 937-1401
 2100 North Research Drive
 Granite City, Illinois 62040
 Phone: (618) 937-1400 FAX: (618) 937-1401

PLAN AND PROFILE
 F.A.U. ROUTE 9024
 STRATFORD LANE
 GRANITE CITY, ILLINOIS
 SECTION No. 05-00187-01-RP

REVISIONS			
NO.	DATE	BY	REMARKS

SCALE: 1 Inch = 20 feet			
DSN. BY:	BFK	DATE:	1/12/07
OWN. BY:	JDH	DATE:	1/12/07
CHKD:	BFK	DATE:	1/12/07
DWG. NO.	JOB NO. E050210	DGN. NAME:	PLANS OF 79 SHTS

SHEET
24