

STATE OF ILLINOIS
DEPARTMENT OF TRANSPORTATION
DIVISION OF HIGHWAYS

F.A.U. ROUTE NO.	SECTION	COUNTY	TOTAL SHEETS	SHEET NO.
9249	04-00015-00-FP	ST. CLAIR	41	1
STA. 10+00.00		TO STA. 79+10.00		
FEDERAL AID PROJECT			CONTRACT 97302	

PLANS FOR PROPOSED LOCAL AGENCY PROJECT

FAU ROUTE 9249 (MONROE STREET)
SECTION 04-00015-00-FP
PROJECT NO. M-5011(217)
CITY OF LEBANON, ILLINOIS
ST. CLAIR COUNTY
JOB NO. C-98-368-06

INDEX OF SHEETS

1. COVER SHEET
2. GENERAL NOTES
3. SUMMARY OF QUANTITIES
- 4.-5. SCHEDULE OF QUANTITIES
- 6.-7. TYPICAL SECTIONS
- 8.-19. PLAN AND PROFILE SHEETS
- 20.-21. TRAFFIC CONTROL PLAN
22. STORM WATER POLLUTION PREVENTION PLAN
23. CONSTRUCTION DETAILS
- 24.-41. CROSS SECTIONS

APPLICABLE IDOT HIGHWAY STANDARDS:

280001-03	602306-01	701501-03
424001-04	602401-01	702001-06
542301-01	604001-02	BLR 17-3
542401	604066-01	BLR 22-4
602301-01	606001-03	

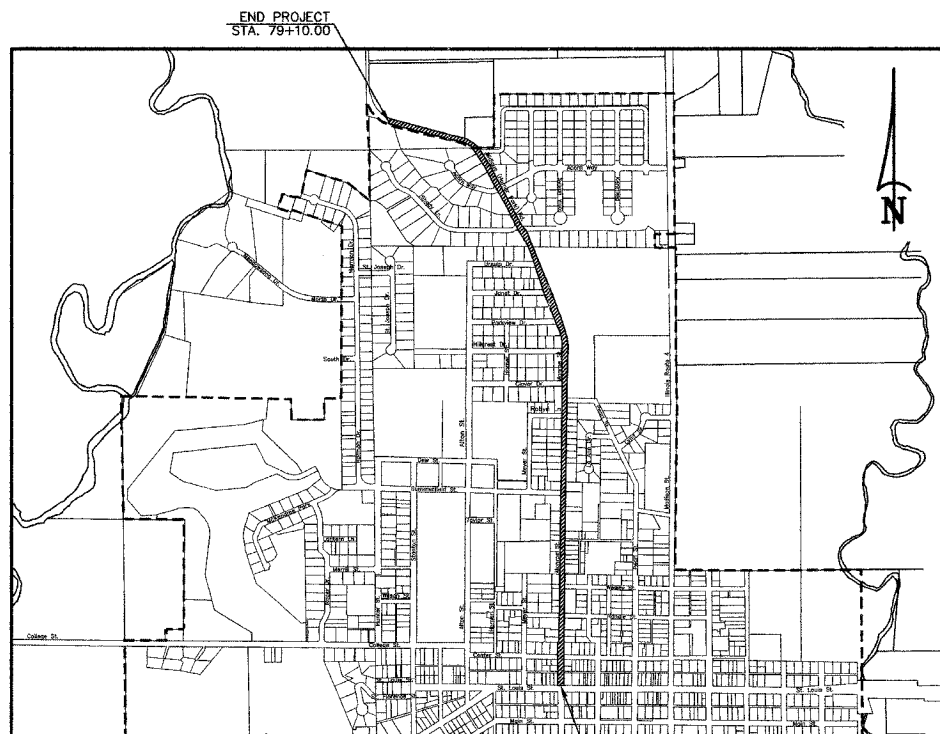
SCALES:

PLAN	
PROFILE HORZ.	
PROFILE VERT.	
CROSS SECTION HORZ.	
CROSS SECTION VERT.	

UTILITY TYPE	NAME OF UTILITY	PHONE NUMBER
ELECTRIC	AMEREN IP	1-800-755-5000
GAS	AMEREN IP	1-800-755-5000
WATER	CITY OF LEBANON	1-618-537-4976
TELEPHONE	AT&T	1-800-480-8088
CABLE	CHARTER COMMUNICATIONS	1-888-438-2427
SANITARY SEWER	CITY OF LEBANON	1-618-537-4976

MONROE STREET

ROADWAY DESIGNATION: URBAN COLLECTOR
DESIGN SPEED: 30 M.P.H.
DESIGN YEAR: (2017) ADT: 2415



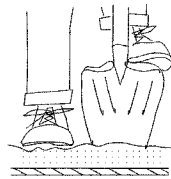
LOCATION MAP
NOT TO SCALE

NET LENGTH OF IMPROVEMENT
6,910.00 FEET = 1.309 MILES



APPROVED		3/5/07
	SCOTT ABNER, MAYOR	DATE
	LOCAL AGENCY REPRESENTATIVE	
PASSED	April 10	2007
		DATE
	DISTRICT 8 ENGINEER OF LOCAL ROADS & STREETS	
RELEASED FOR BID	4-10-07	DATE
BASED ON LIMITED REVIEW		DATE
	MARY C. LAMIE, P.E.	DEPUTY DIRECTOR OF HIGHWAYS
	REGION FIVE ENGINEER	
	STATE OF ILLINOIS	
	DEPARTMENT OF TRANSPORTATION	

HOLD IT ! CALL BEFORE YOU DIG !
Phone J.U.L.I.E.



The owner would like to remind you that underground utility facilities can be damaged by shovel blades or other digging equipment. You can prevent damage or possible personal danger by phoning 800/892-0123 at least 48 hours before you dig. That's the toll-free number for "J.U.L.I.E.", which stands for Joint Utilities Location Information for Excavators.

If there are any pipes, cables, lines or mains in the excavation area, utility personnel will be out to mark the facilities so you can work around them.

Toll Free 800/892-0123



Tracy M. Lawless
3/5/07
Date of Signing
11/30/07
Date of License Expiration

PREPARED BY:
RHUTASEL and ASSOCIATES, INC.
CONSULTING ENGINEERS • LAND SURVEYORS
CORPORATE OFFICE: 4 INDUSTRIAL DRIVE, FREEBURG, ILLINOIS 62243 (618) 539-3178
REGIONAL OFFICE: 201 SOUTH LOCUST STREET, CENTRALIA, ILLINOIS 62801 (618) 532-1992