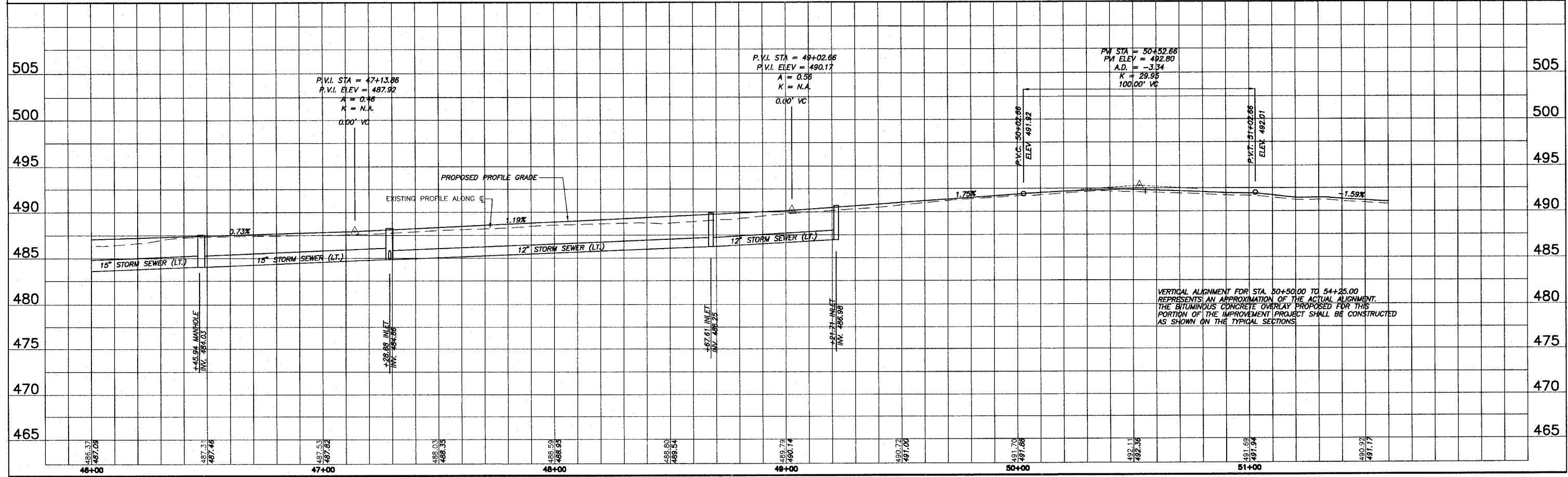
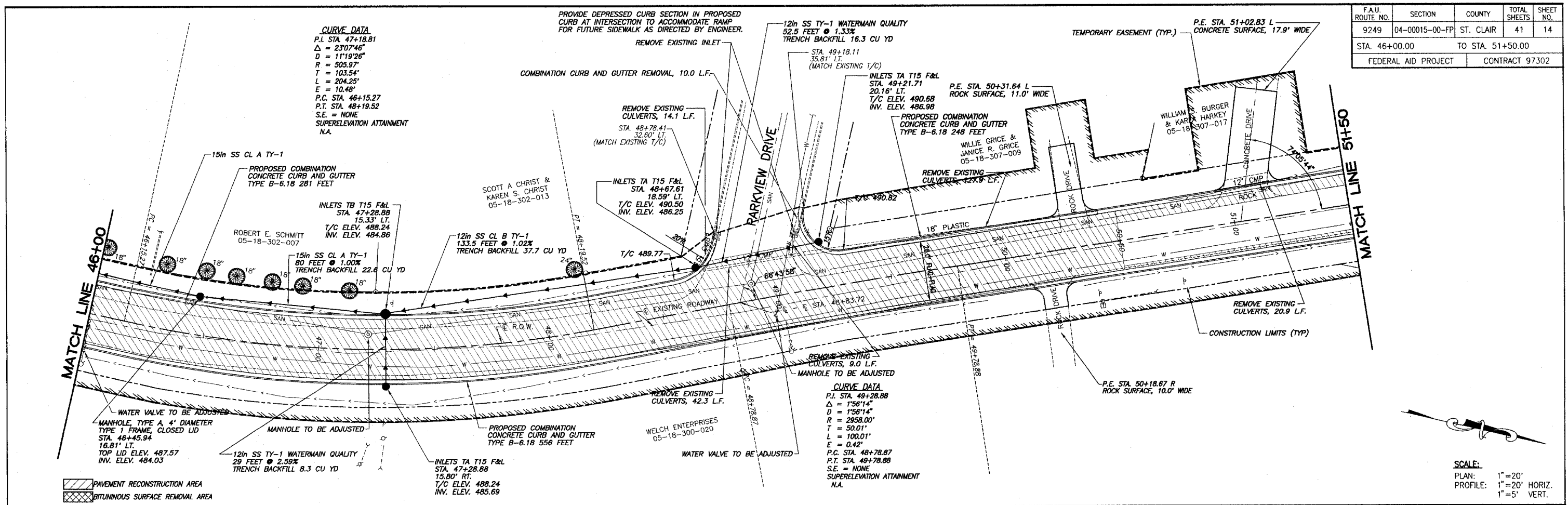


F.A.U. ROUTE NO.	SECTION	COUNTY	TOTAL SHEETS	SHEET NO.
9249	04-00015-00-FP	ST. CLAIR	41	14
STA. 46+00.00		TO STA. 51+50.00		
FEDERAL AID PROJECT		CONTRACT 97302		



VERTICAL ALIGNMENT FOR STA. 50+50.00 TO 54+25.00 REPRESENTS AN APPROXIMATION OF THE ACTUAL ALIGNMENT. THE BITUMINOUS CONCRETE OVERLAY PROPOSED FOR THIS PORTION OF THE IMPROVEMENT PROJECT SHALL BE CONSTRUCTED AS SHOWN ON THE TYPICAL SECTIONS.

REVISION - Latham - Memo: STP Project/Sheet 14, LP, STP, 04/16/2009, 10:56:06 AM, Printed by M.A.L.