



CORPORATE OFFICE
4940 OLD COLLINGSVILLE RD.
SWANSEA, ILLINOIS 62226
TEL (618) 624-4488
FAX (618) 624-6888
corp@twm-inc.com

WATERLOO OFFICE
118 SOUTH MAIN STREET
WATERLOO, ILLINOIS 62298
TEL (618) 939-6060
FAX (618) 939-3898
waterloo@twm-inc.com

ST. LOUIS OFFICE
1001 CRAIG ROAD, SUITE 280
ST. LOUIS, MISSOURI 63146
TEL (314) 286-5062
FAX (314) 872-2194
stlouis@twm-inc.com

PROFESSIONAL REGISTRATIONS	LICENSE NO.
ILLINOIS PROFESSIONAL DESIGN FIRM	34-0239
PROFESSIONAL ENGINEERING CORP.	02-0879
ILLINOIS PROFESSIONAL ARCHITECTURE CORP.	02-0888
ILLINOIS PROFESSIONAL SURVEYING CORP.	02-0939
MISSOURI PROFESSIONAL ENGINEER CORP.	NO 0039
MISSOURI LAND SURVEYING CORP.	NO 0066

SEAL

Signature: _____
Signature Date: _____
Registration Date: _____

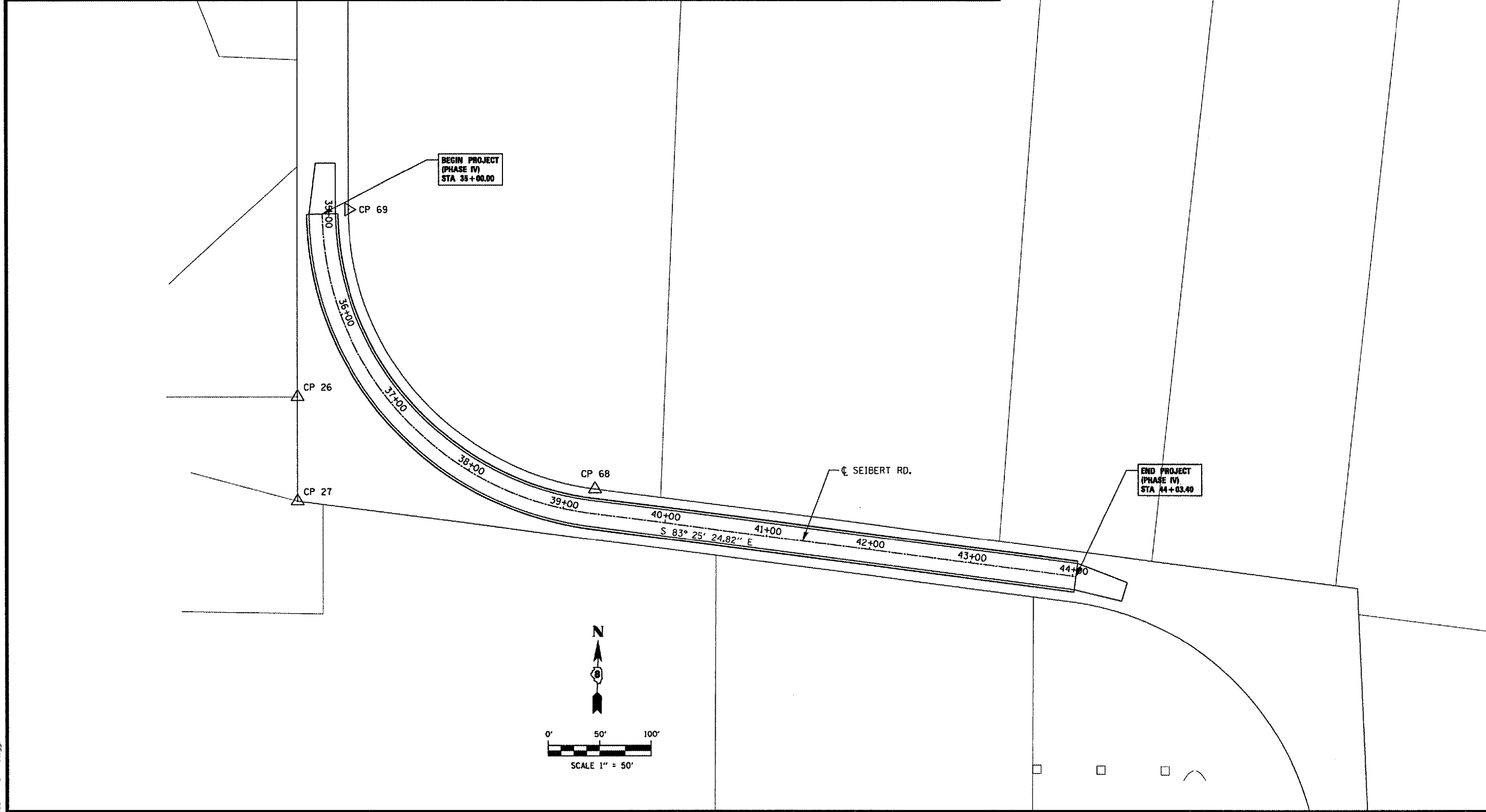
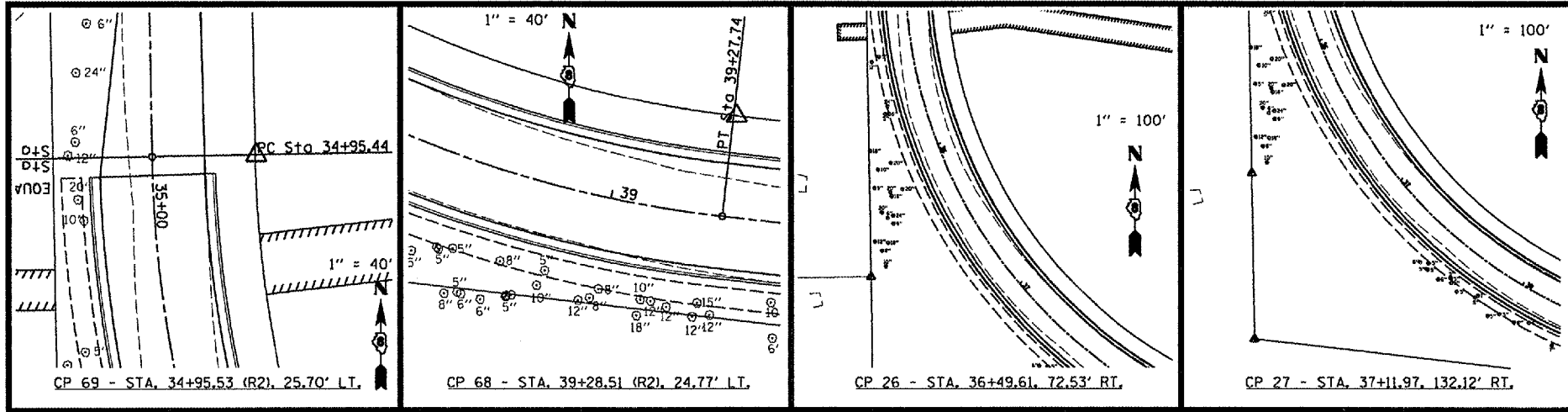
STATEMENT OF RESPONSIBILITY
I hereby confirm that the documents herein to be authorized by my seal is restricted to this show, and I hereby disclaim any responsibility for all other drawings, specifications, estimates, reports or other documents or instruments relating to or included to be utilized for any other part of the architectural, engineering or survey project.

**PROPOSED ALIGNMENT
TIES AND BENCHMARKS**

PROJECT:
SEIBERT ROAD
RECONSTRUCTION - PHASE IV
VILLAGE OF SHILOH
ST. CLAIR COUNTY, ILLINOIS

REV.	DATE	DESCRIPTION
△		
△		
△		

DRAWN BY: M.J.J.	SHEET
DESIGNED BY: M.J.J.	8
CHECKED BY: XXX	
APPROVED BY: XXX	
PROJECT NUMBER: D20010479	
<input checked="" type="checkbox"/> ISSUED FOR REVIEW	<input type="checkbox"/> ISSUED FOR BIDDING
<input type="checkbox"/> ISSUED FOR CONSTR.	<input type="checkbox"/> RECORD DRAWING



PLOT DATE = 3/21/2007
 FILE NAME = F:\080479B\Sign\Phase IV Plans\REVISED 2-18-07\080479B\04.dgn
 PLOT SCALE = 1/8" = 100.0000' / IN.
 USER NAME = design