



CORPORATE OFFICE
4940 OLD COLLINSVILLE RD.
SWANSEA, ILLINOIS 62226
TEL (618) 624-4488
FAX (618) 624-6688
corp@twm-inc.com

WATERLOO OFFICE
118 SOUTH MAIN STREET
WATERLOO, ILLINOIS 62296
TEL (618) 989-5060
FAX (618) 989-8888
waterloo@twm-inc.com

ST. LOUIS OFFICE
1001 CRAIG ROAD, SUITE 200
ST. LOUIS, MISSOURI 63146
TEL (314) 236-5062
FAX (314) 872-2194
stlouis@twm-inc.com

PROFESSIONAL REGISTRATIONS	LICENSE NO.
ILLINOIS PROFESSIONAL DESIGN FIRM	04-00000
PROFESSIONAL ENGINEERING CORP.	01-00000
PROFESSIONAL SURVEYING CORP.	01-00000
ILLINOIS PROFESSIONAL ENGINEERING CORP.	04-00000
MISSOURI PROFESSIONAL ENGINEER CORP.	01-00000
MISSOURI LAND SURVEYING CORP.	01-00000

SEAL

Signature: _____
Expiration Date: _____

STATEMENT OF RESPONSIBILITY
I hereby certify that the documents herein to be authorized by my seal is intended to be used, and I hereby disclaim any responsibility for all other drawings, specifications, estimates, reports or other documents or instruments relating to or intended to be utilized in any other part of the architectural, engineering or survey project.

RIGHT-OF-WAY SHEETS
STA. 38+00 TO 44+53.40

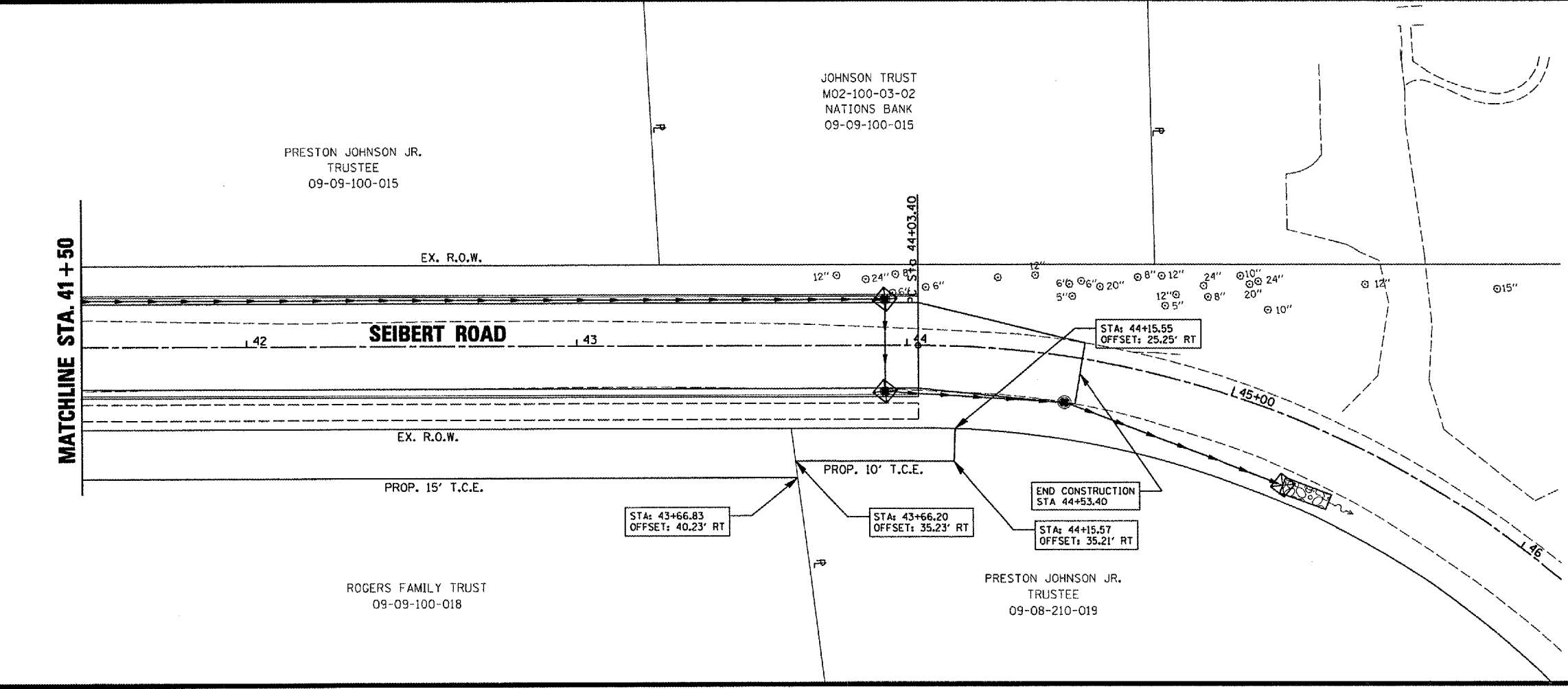
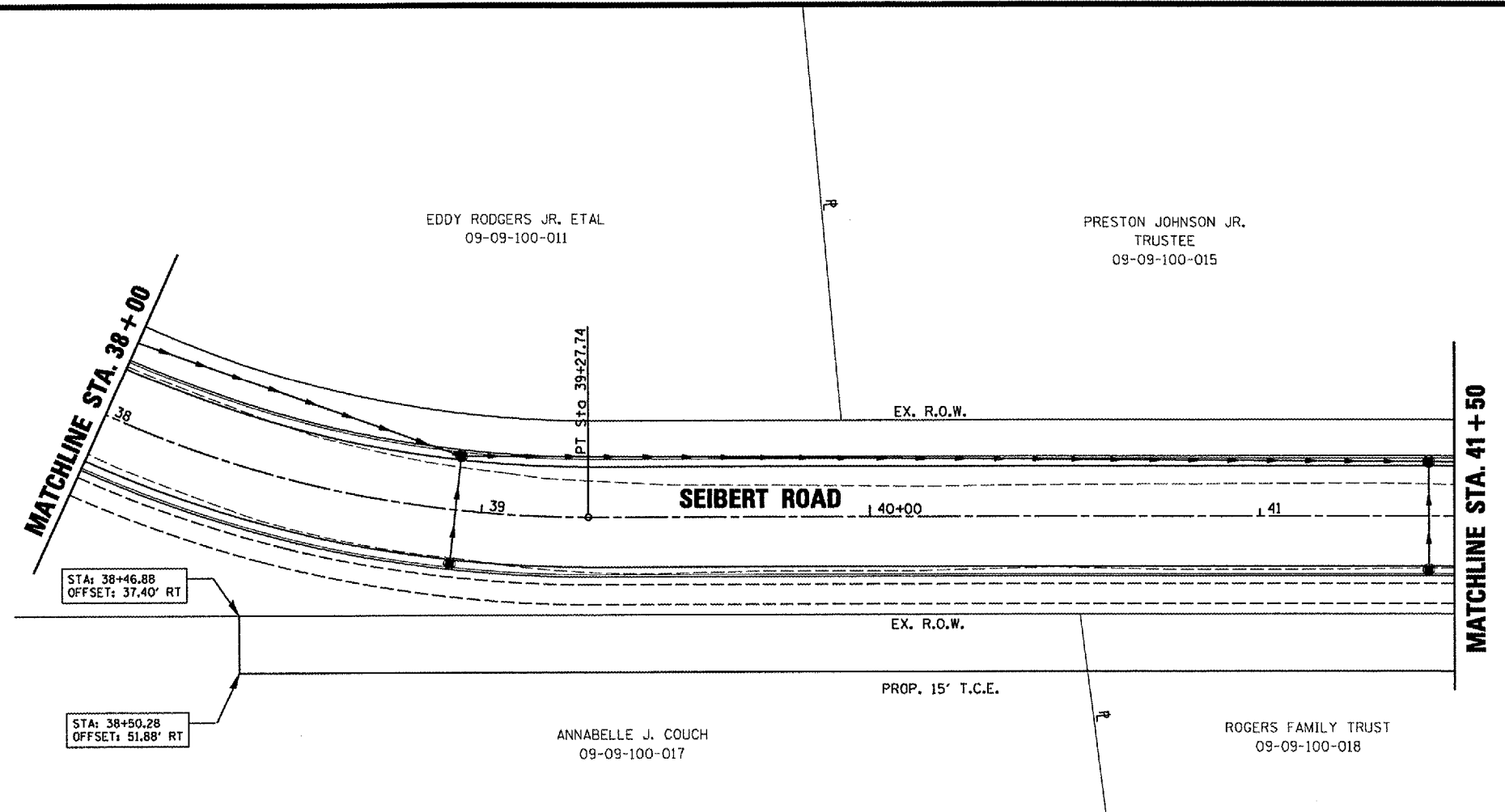
PROJECT: SEIBERT ROAD
RECONSTRUCTION - PHASE IV
VILLAGE OF SHILOH
ST. CLAIR COUNTY, ILLINOIS

REV.	DATE	DESCRIPTION
△		
△		
△		

DRAWN BY: MJJ **SHEET**
DESIGNED BY: MJJ **15**
CHECKED BY: XXX
APPROVED BY: XXX

PROJECT NUMBER: D20010479 **OF 38 SHEETS**

ISSUED FOR REVIEW ISSUED FOR BIDDING
 ISSUED FOR CONSTR. RECORD DRAWING



PLOT DATE = 3/21/2007
FILE NAME = P:\A01079B\dgn\Phase IV Plans\REVISED 2-16-07\A01079B04.dgn
PLOT SCALE = 40.0000 / 1" = 20'
USER NAME = dbrg