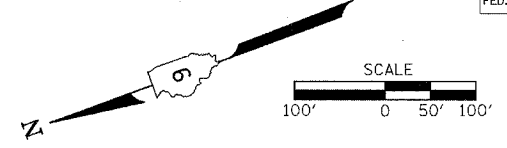
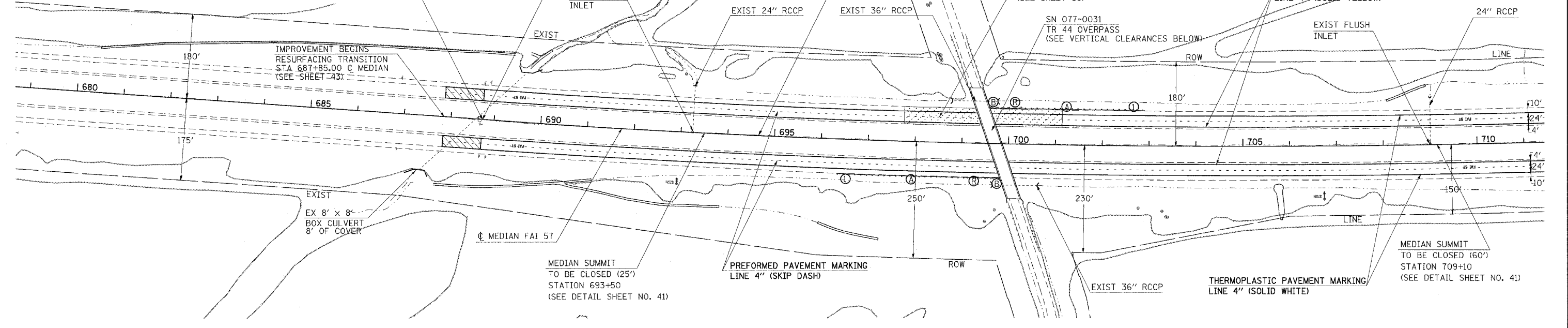


F.A.I. RTE.	SECTION	COUNTY	TOTAL SHEETS	SHEET NO.
57	77-G, 4-1, 4-2R5-2	PULASKI	52	23
STA.		TO STA.		
FED. ROAD DIST. NO.		ILLINOIS	FED. AID PROJECT	
CONTRACT NO. 98829				

EX CURVE 8
 PI STA = 700+35.00
 $\Delta = 5^\circ 59' 00''$ (LT)
 $D = 0^\circ 15' 00''$
 $R = 22,918.33'$
 $T = 1,197.94'$
 $L = 2393.33'$
 $E = 31.29'$
 PC STA = 688+37.06
 PT STA = 712+30.39



- GUARDRAIL LEGEND**
- (R) GUARDRAIL REMOVAL
 - (A) SPBGR TYPE A
 - (V) VERTICAL ADJUSTMENT
 - (S) SPBGR STRUCTURE
 - (L) TERMINAL - TY 1, SPL (TAN)
 - (2) TERMINAL - TYPE 2
 - (5) TERMINAL - TYPE 5
 - (6) TERMINAL - TYPE 6
 - (B) TERMINAL - TY 6B, SPL
 - SEE SCHEDULE

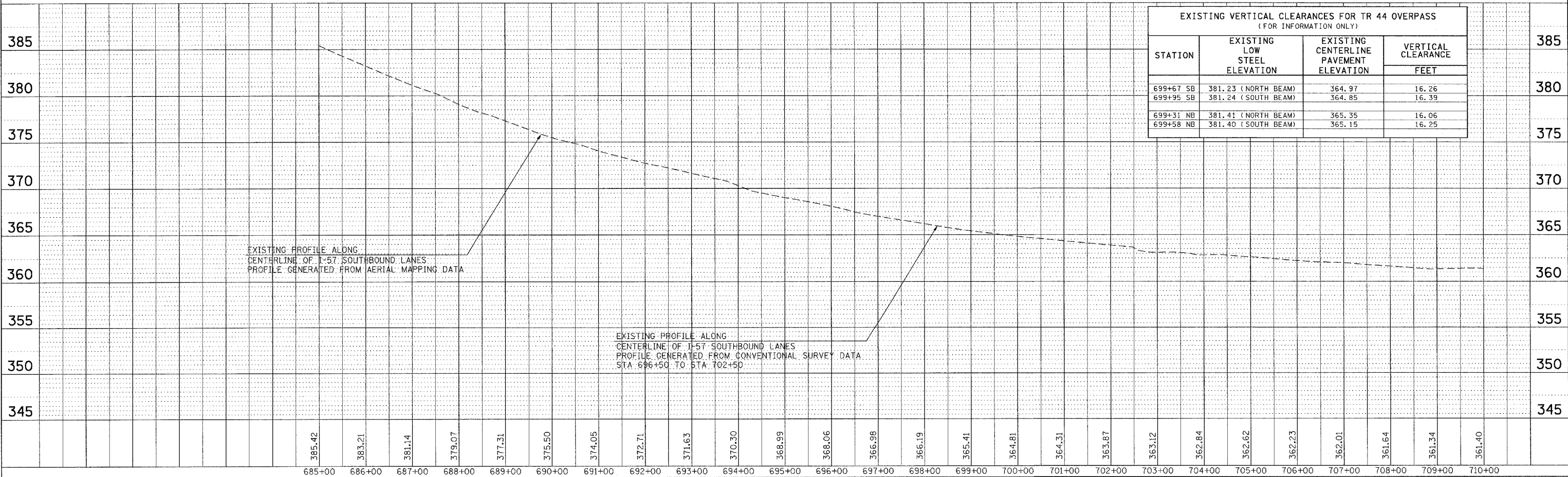


PLAN
 SURVEYED BY: _____
 ALIGNED CHECKED: _____
 NOTE BOOK NO.: _____
 DATE: _____

PROFILE
 SURVEYED BY: _____
 GRADES CHECKED: _____
 NOTE BOOK NO.: _____
 DATE: _____

EXISTING VERTICAL CLEARANCES FOR TR 44 OVERPASS
(FOR INFORMATION ONLY)

STATION	EXISTING LOW STEEL ELEVATION	EXISTING CENTERLINE PAVEMENT ELEVATION	VERTICAL CLEARANCE
			FEET
699+67 SB	381.23 (NORTH BEAM)	364.97	16.26
699+95 SB	381.24 (SOUTH BEAM)	364.85	16.39
699+31 NB	381.41 (NORTH BEAM)	365.35	16.06
699+58 NB	381.40 (SOUTH BEAM)	365.15	16.25



PLOT DATE = 2/21/2007
 FILE NAME = c:\p\projects\98829\98829.dwg
 PLOT SCALE = 1/8" = 100'
 USER NAME = bmcneahy

PLAN PROFILE SHEET STA 680+00 TO 710+00