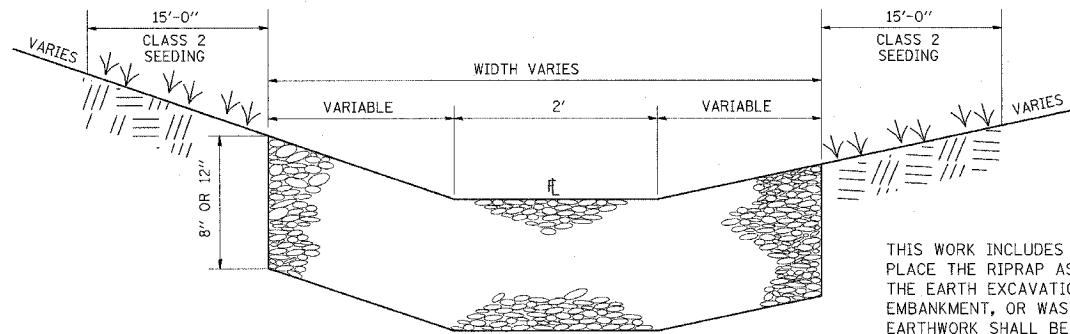


F.A.I. RTE.	SECTION	COUNTY	TOTAL SHEETS	SHEET NO.
57	77-13, 4-1, 4-2RS-2	PULASKI	52	39
STA.	TO STA.			
FED. ROAD DIST. NO.	ILLINOIS	FED. AID PROJECT		
CONTRACT NO. 98829				

TYPICAL DETAIL OF STONE RIPRAP DITCH LINING



NOTES

THIS WORK INCLUDES THE EARTH EXCAVATION REQUIRED TO PLACE THE RIPRAP AS SHOWN. THE MATERIAL RESULTING FROM THE EARTH EXCAVATION SHALL BE PLACED IN THE ROADWAY EMBANKMENT, OR WASTED AS DIRECTED BY THE ENGINEER. THE EARTHWORK SHALL BE CONSIDERED INCLUDED IN THE COST OF THE DITCH.

THE RIPRAP DITCH SHALL BE CONSTRUCTED AT THE LOCATIONS SHOWN IN THE PLANS OR AS DIRECTED BY THE ENGINEER. CONSTRUCTION OF THE STONE RIPRAP DITCH SHALL CONFORM TO THE REQUIREMENTS FOR CLASS A3 RIPRAP AS INDICATED IN SECTION 281 OF STANDARD SPECIFICATIONS.

THIS WORK SHALL BE PAID FOR AT THE CONTRACT UNIT PRICE PER TON FOR **STONE RIPRAP, CLASS A3**, WHICH PRICE SHALL INCLUDE ALL MATERIAL, LABOR AND EQUIPMENT TO COMPLETE THE WORK IN PLACE AS SHOWN.

BEDDING MATERIAL AND FILTER FABRIC AS SPECIFIED IN SECTION 281 OF THE STANDARD SPECIFICATIONS WILL NOT BE REQUIRED.

THE LENGTH AND WIDTH OF THE RIPRAP DITCH WILL BE AS SPECIFIED IN THE RIPRAP SCHEDULE OR AS DIRECTED BY THE ENGINEER.

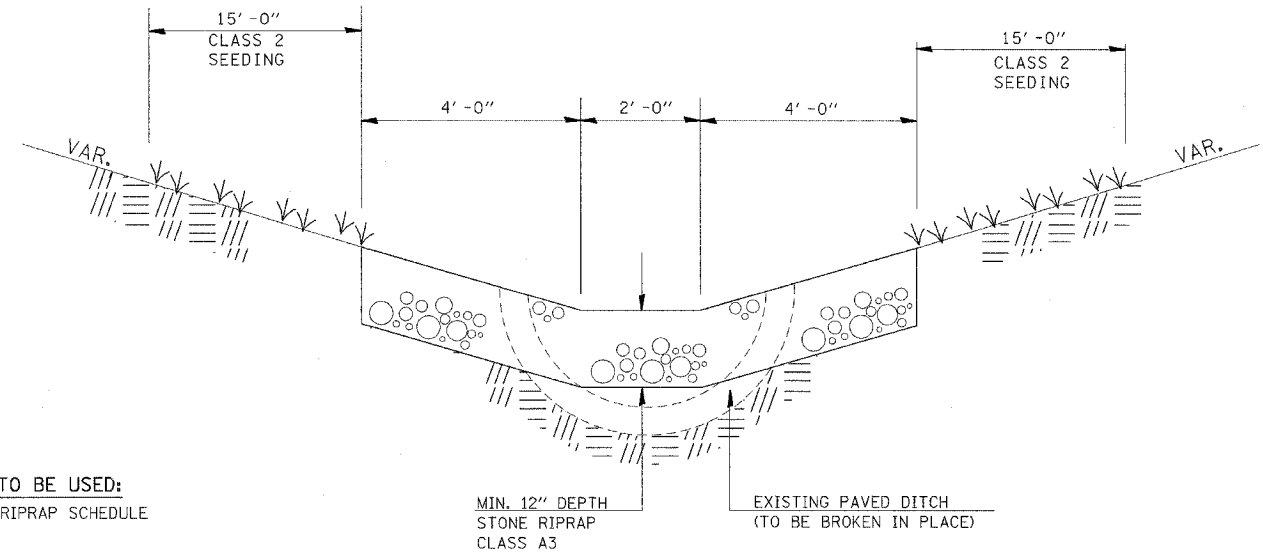
BED THICKNESS FOR DITCH LINING ADJACENT TO MEDIAN INLETS SHALL BE 8". FOR ALL OTHER AREAS, THE BED THICKNESS SHALL BE 12".

LOCATIONS

STA 768+99
STA 774+73
STA 7+62 (RAMP A)
MEDIAN INLETS (SEE SHEET 40)

DETAIL STONE RIPRAP DITCH

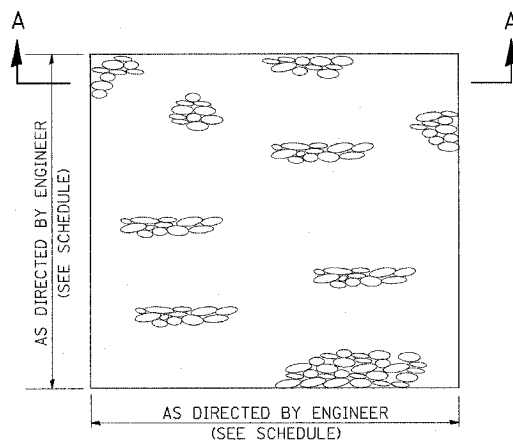
(ON EXISTING PAVED DITCH)



TO BE USED:
SEE RIPRAP SCHEDULE

NOTES: THIS WORK SHALL BE PAID FOR AT THE CONTRACT UNIT PRICE PER TON, FOR **STONE RIPRAP DITCH**, WHICH PRICE SHALL INCLUDE ALL MATERIAL LABOR AND EQUIPMENT TO COMPLETE THE WORK IN PLACE AS SHOWN AND DETAILED IN THE SPECIAL PROVISIONS. THE FINISHED SIDE SLOPES OF THE STONE RIPRAP DITCH SHALL MATCH THE EXISTING GRADE.

RIPRAP DETAIL



THE EXCESS EXCAVATION MAY BE WASTED IN NEARBY EROSION CHANNELS AS DIRECTED BY THE ENGINEER.

LOCATIONS

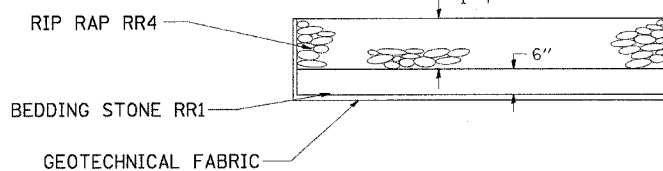
STA 702+70 RT
STA 869+80 LT

FINAL LOCATION AS DIRECTED BY THE ENGINEER.

DIMENSIONS SHALL BE DETERMINED FROM THE RIPRAP SCHEDULE

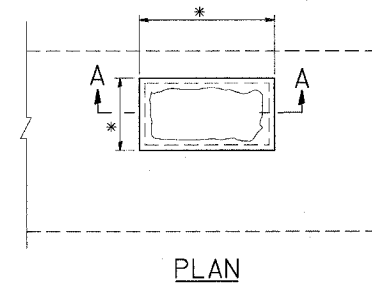
NOTES:

- EXISTING CURB OUTLETS DISTURBED DURING CONSTRUCTION SHALL BE RESTORED TO ORIGINAL CONDITION.
- EARTH EXCAVATION IS INCLUDED IN THE COST OF STONE RIP RAP, CLASS A4.

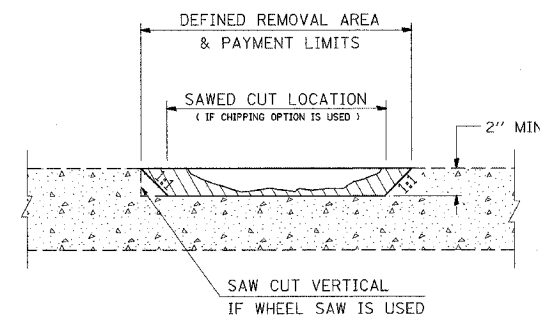


SECTION A-A

DETAILS OF BITUMINOUS PATCHING-PARTIAL DEPTH



* LIMITS OF PARTIAL DEPTH PATCHING AS DIRECTED BY THE ENGINEER.



SECTION A-A

NOTES:

THE CONTRACTOR HAS THE OPTION OF SAWING THE PAVEMENT AND CHIPPING THE EDGES OR BY MILLING THE DEFINED AREA OF THE PATCH. THE PAVEMENT SHALL BE SAWED A MINIMUM OF 2 INCH DEPTH IF THE SAWING OPTION IS USED. THE DIAMETER OF THE MILLING MACHINE SHALL BE OF SUFFICIENT SIZE TO MAINTAIN THE 1:1 SIDE SLOPE. A FIELD SURVEY WAS CONDUCTED BY THE DISTRICT CONSTRUCTION ENGINEER. PARTIAL DEPTH PATCHING SHALL BE USED ON THE FOUR MOUNDS INTERCHANGE RAMPS AND MOUNDS ROAD.

THIS ITEM WILL BE PAID FOR AT THE CONTRACT UNIT PRICE PER SQUARE YARD FOR PAVEMENT PATCHING (PARTIAL DEPTH).

PLOT DATE = 2/21/2007
FILE NAME = c:\projects\p104603\p104603.dwg
PLOT SCALE = 50.0000 / 1 IN.
USER NAME = bomeah1

REVISIONS	10-4-91
REVISION	
REVISION	
REVISION	

STD. 9-91

DETAILS: STONE RIPRAP DITCH LINING; STONE RIPRAP DITCH; RIPRAP DITCH; PATCHING - PARTIAL DEPTH