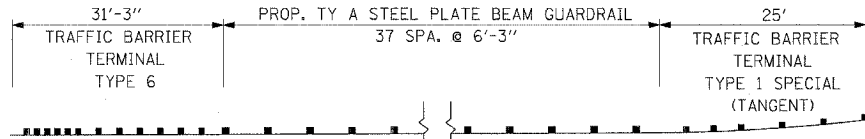


F.A.I. RTE.	SECTION	COUNTY	TOTAL SHEETS	SHEET NO.
57/64	(41-3)HBK	JEFFERSON	518	090
STA. 46+00.00 TO STA. 52+00.00		ILLINOIS FED. AID PROJECT		
CONTRACT NO. 98963				

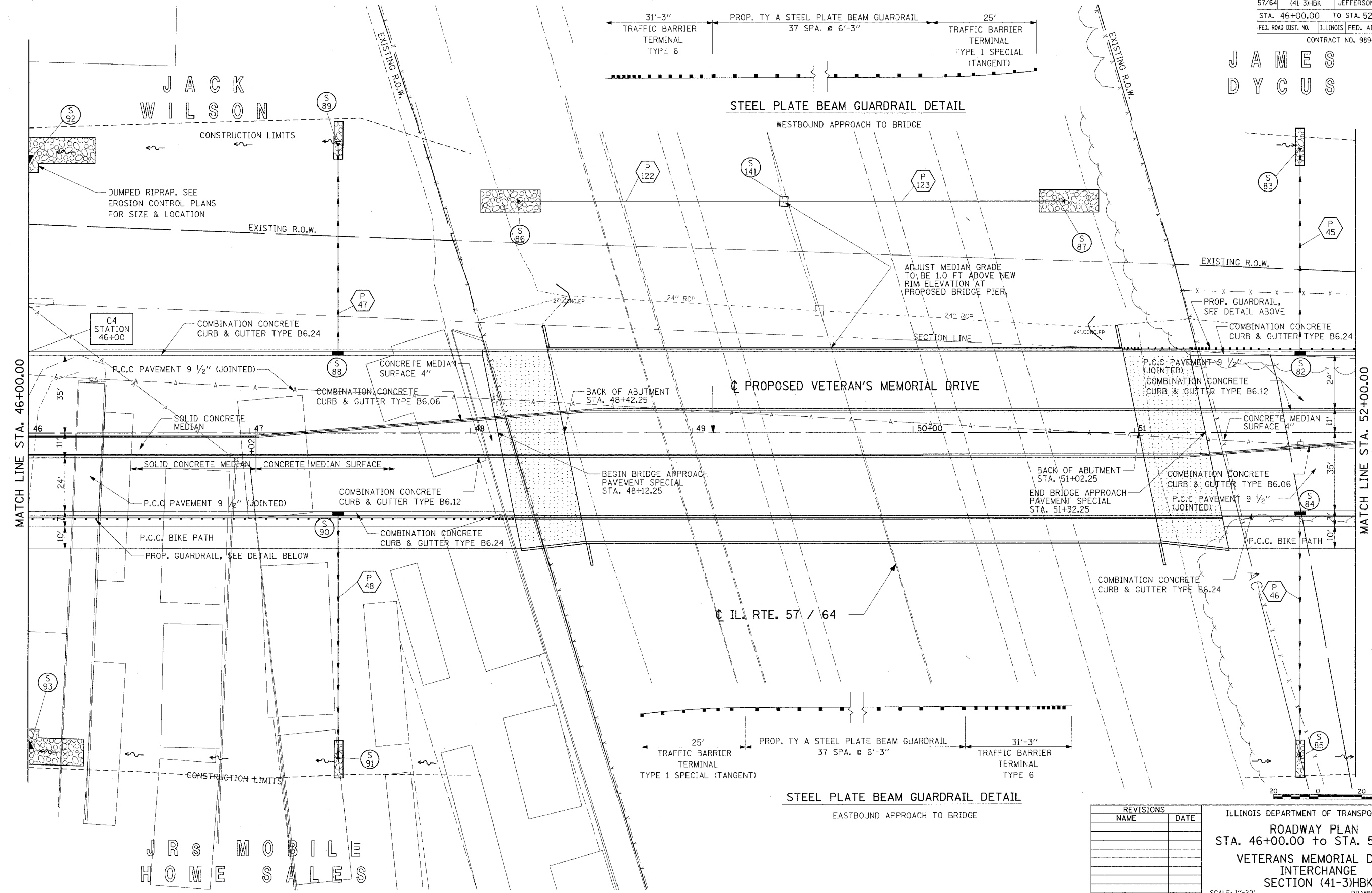
JAMES  
DYCUS



STEEL PLATE BEAM GUARDRAIL DETAIL  
WESTBOUND APPROACH TO BRIDGE



STEEL PLATE BEAM GUARDRAIL DETAIL  
EASTBOUND APPROACH TO BRIDGE



MATCH LINE STA. 46+00.00

MATCH LINE STA. 52+00.00

REVISIONS	
NAME	DATE

ILLINOIS DEPARTMENT OF TRANSPORTATION  
ROADWAY PLAN  
STA. 46+00.00 TO STA. 52+00.00  
VETERANS MEMORIAL DRIVE  
INTERCHANGE  
SECTION (41-3)HBK  
SCALE: 1"=20'  
DATE 3-22-07  
DRAWN BY RLT  
CHECKED BY MTM

© Copyright Hanson Professional Services Inc. 2007  
**HANSON**  
Hanson Professional Services Inc.

03/22/2007, 02:56 PM  
A:\98\Jobs\98s20\98a\Road\Sheet\c-103.rvt.dgn

LAYOUT	RLT	02/26/04
DRAWN	JED	04/12/04
REVIEWED	MTM	03/22/07

JRS HOME MOBILE SALES