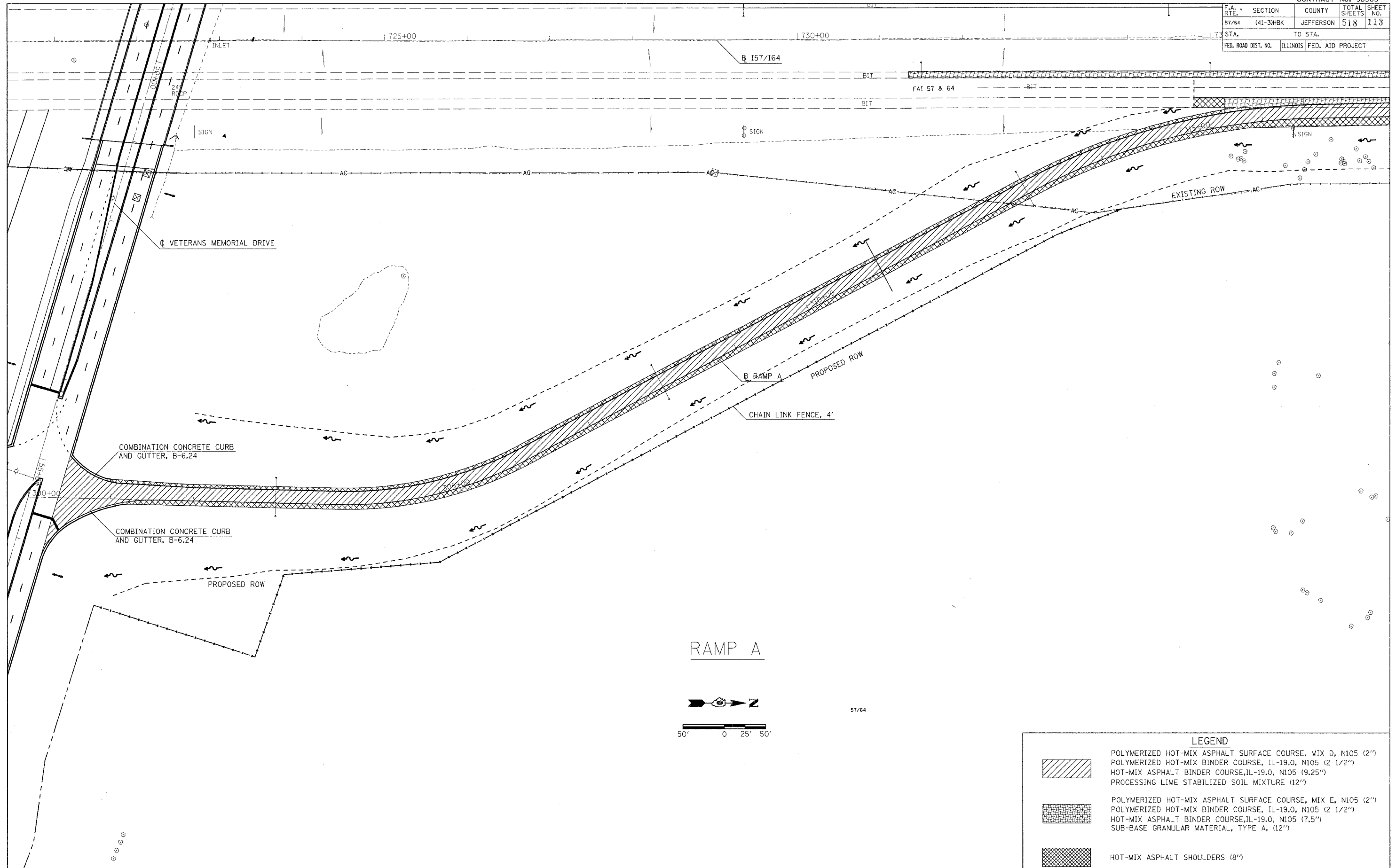
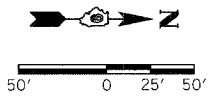


| F.A. RTE. | SECTION | COUNTY | TOTAL SHEETS | SHEET NO. |
|---------------------|-----------|---------------------------|--------------|-----------|
| 57/64 | (41-3)HBK | JEFFERSON | 518 | 113 |
| STA. | | TO STA. | | |
| FED. ROAD DIST. NO. | | ILLINOIS FED. AID PROJECT | | |



RAMP A



| LEGEND | |
|--------|--|
| | POLYMERIZED HOT-MIX ASPHALT SURFACE COURSE, MIX D, N105 (2") POLYMERIZED HOT-MIX BINDER COURSE, IL-19.0, N105 (2 1/2") HOT-MIX ASPHALT BINDER COURSE, IL-19.0, N105 (9.25") PROCESSING LIME STABILIZED SOIL MIXTURE (12") |
| | POLYMERIZED HOT-MIX ASPHALT SURFACE COURSE, MIX E, N105 (2") POLYMERIZED HOT-MIX BINDER COURSE, IL-19.0, N105 (2 1/2") HOT-MIX ASPHALT BINDER COURSE, IL-19.0, N105 (7.5") SUB-BASE GRANULAR MATERIAL, TYPE A, (12") |
| | HOT-MIX ASPHALT SHOULDERS (8") |

PLOT DATE = 03/21/2007 08:49 AM
 FILE NAME = I:\98\proj\982014\DOT RAMP A\982014.mxd
 PLOT SCALE = 1/8" = 100'-0" / IN.
 USER NAME = ket