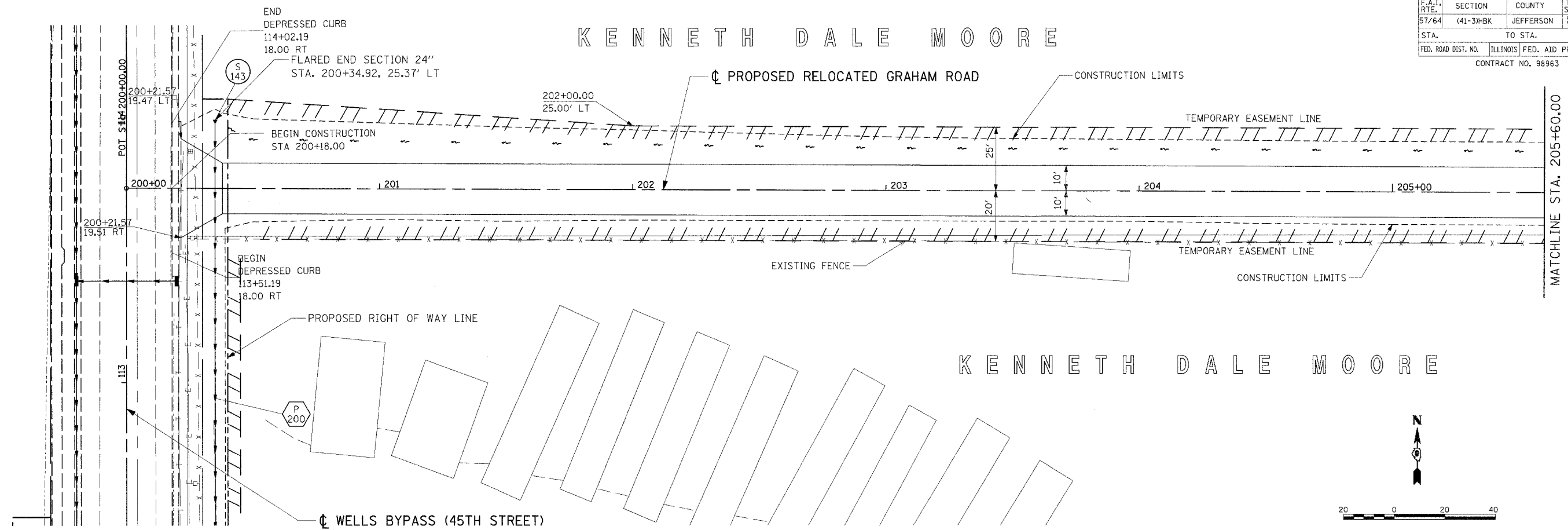


F.A.I. RTE.	SECTION	COUNTY	TOTAL SHEETS	SHEET NO.
57/64	(41-3)HBK	JEFFERSON	518	132
STA.	TO STA.			
FED. ROAD DIST. NO.	ILLINOIS	FED. AID PROJECT		
CONTRACT NO. 98963				

KENNETH DALE MOORE

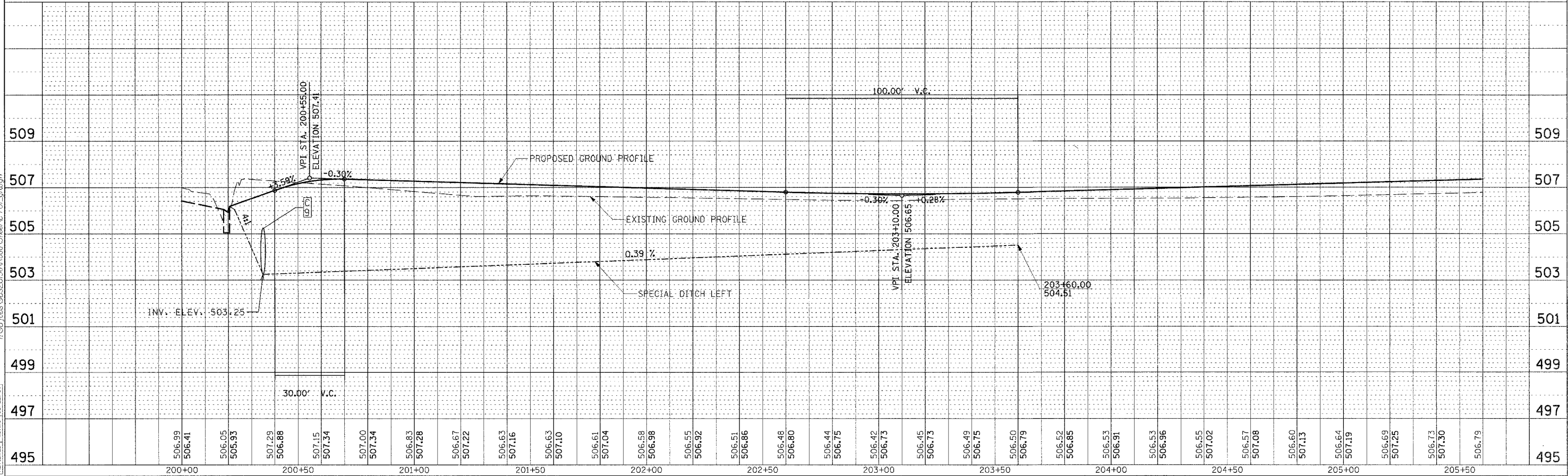
PLAN	SURVEYED	DATE
	PLOTTED	
	NOTED	
	BY	
	NO.	
	NO.	
	NO.	



PROFILE	SURVEYED	DATE
	PLOTTED	
	NOTED	
	BY	
	NO.	
	NO.	
	NO.	

03/21/2007 08:31 AM
 I:\98 [06]98-2019\Road\100\Profile-701.dwg

LAYOUT	RLT	03/01/04
DRAWN	JED	03/25/04
REVIEWED	M.L.M.	03/22/07



ROADWAY PLAN & PROFILE RELOCATED GRAHAM ROAD STA. 200+00.00 TO STA. 205+60.00