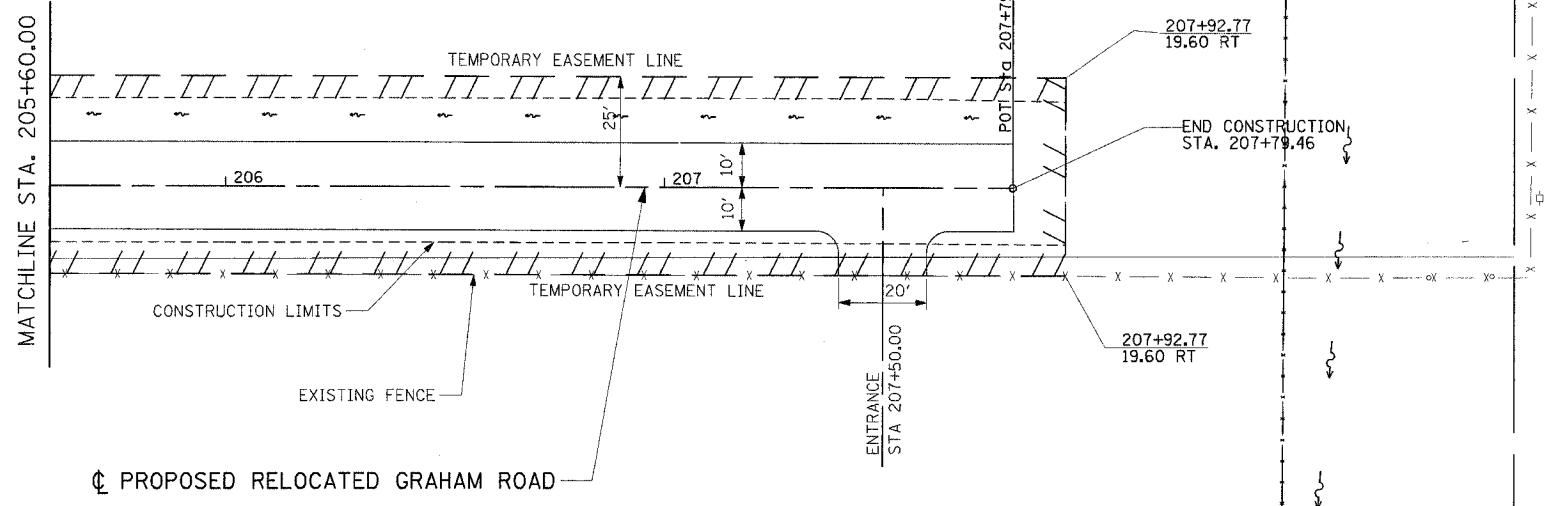
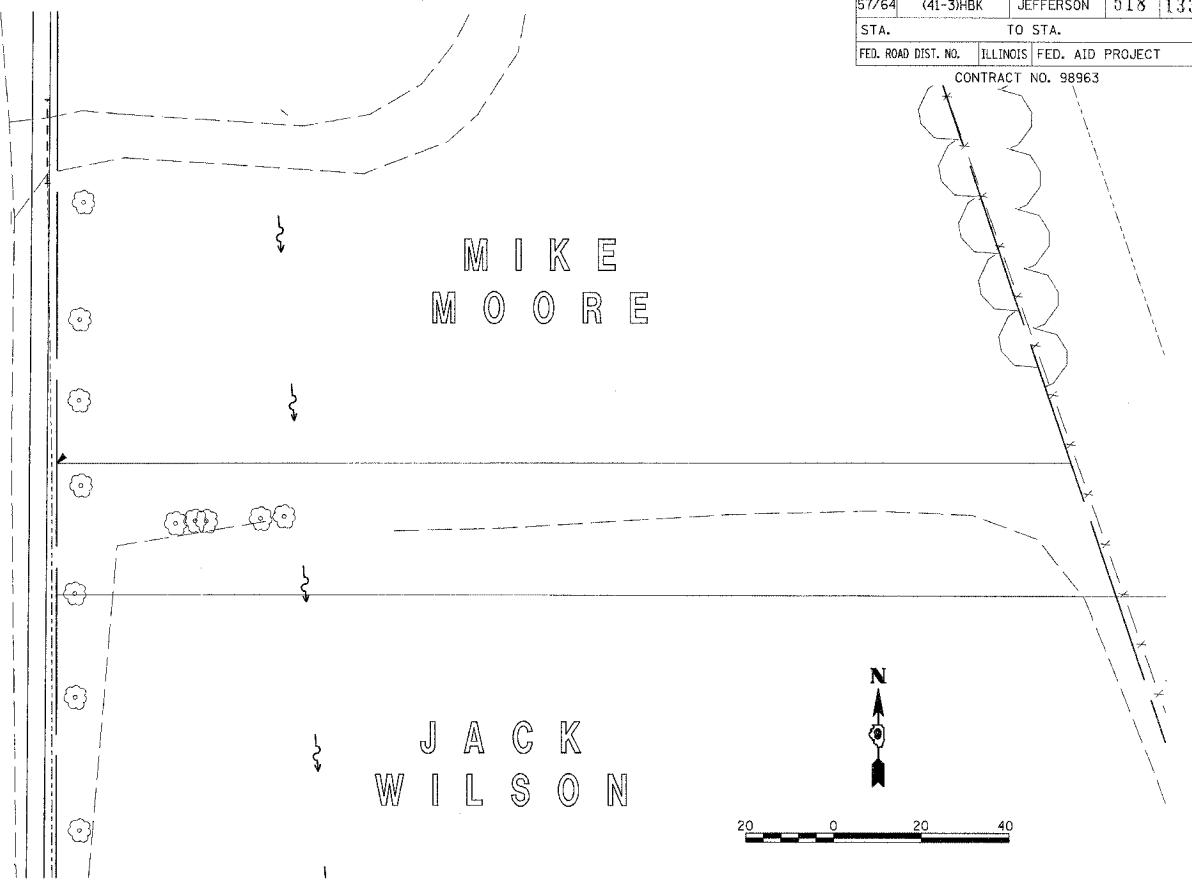


F.A.I. RTE.	SECTION	COUNTY	TOTAL SHEETS	SHEET NO.
57/64	(41-3)BK	JEFFERSON	518	133
STA.	TO STA.			
FED. ROAD DIST. NO.	ILLINOIS	FED. AID PROJECT	CONTRACT NO. 98963	

KENNETH DALE MOORE



KENNETH DALE MOORE

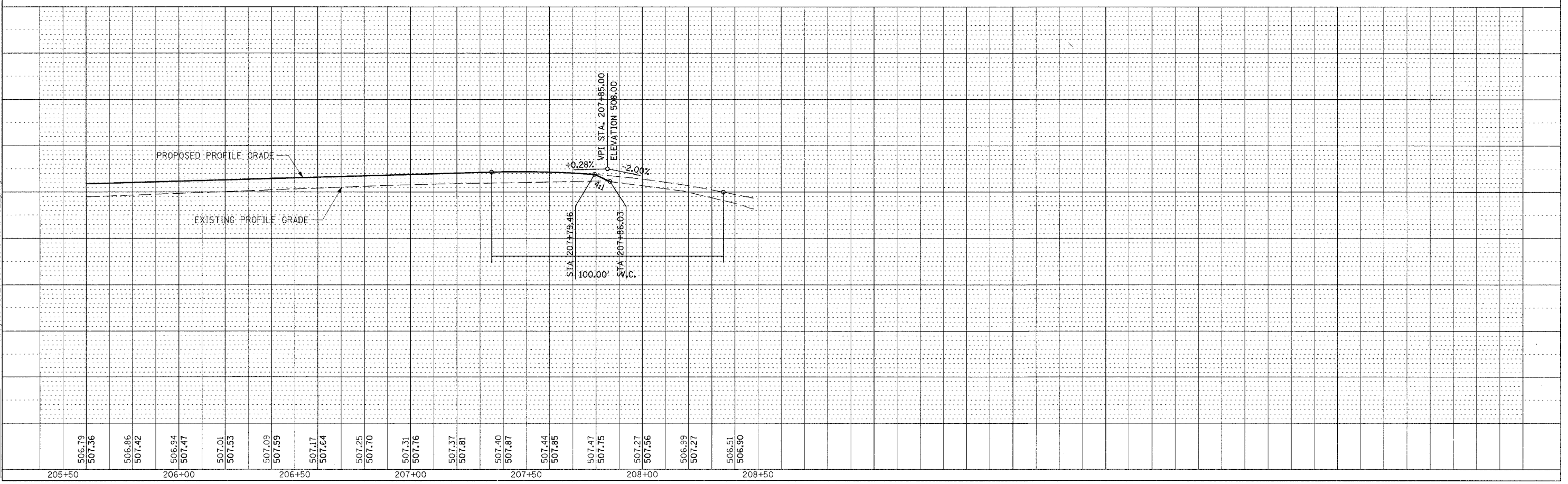


DATE	BY
DATE	BY
DATE	BY

DATE	BY
DATE	BY
DATE	BY

03/21/2007 08:31 AM
 I:\98963\98963\205+60\Road\Sheet\02-07.dwg

LAYOUT	RLT	03/01/04
DRAWN	JED	03/25/04
REVIEWED	M.L.A.	03/22/07



ROADWAY PLAN & PROFILE RELOCATED GRAHAM ROAD STA. 205+60.00 TO STA. 207+79.46