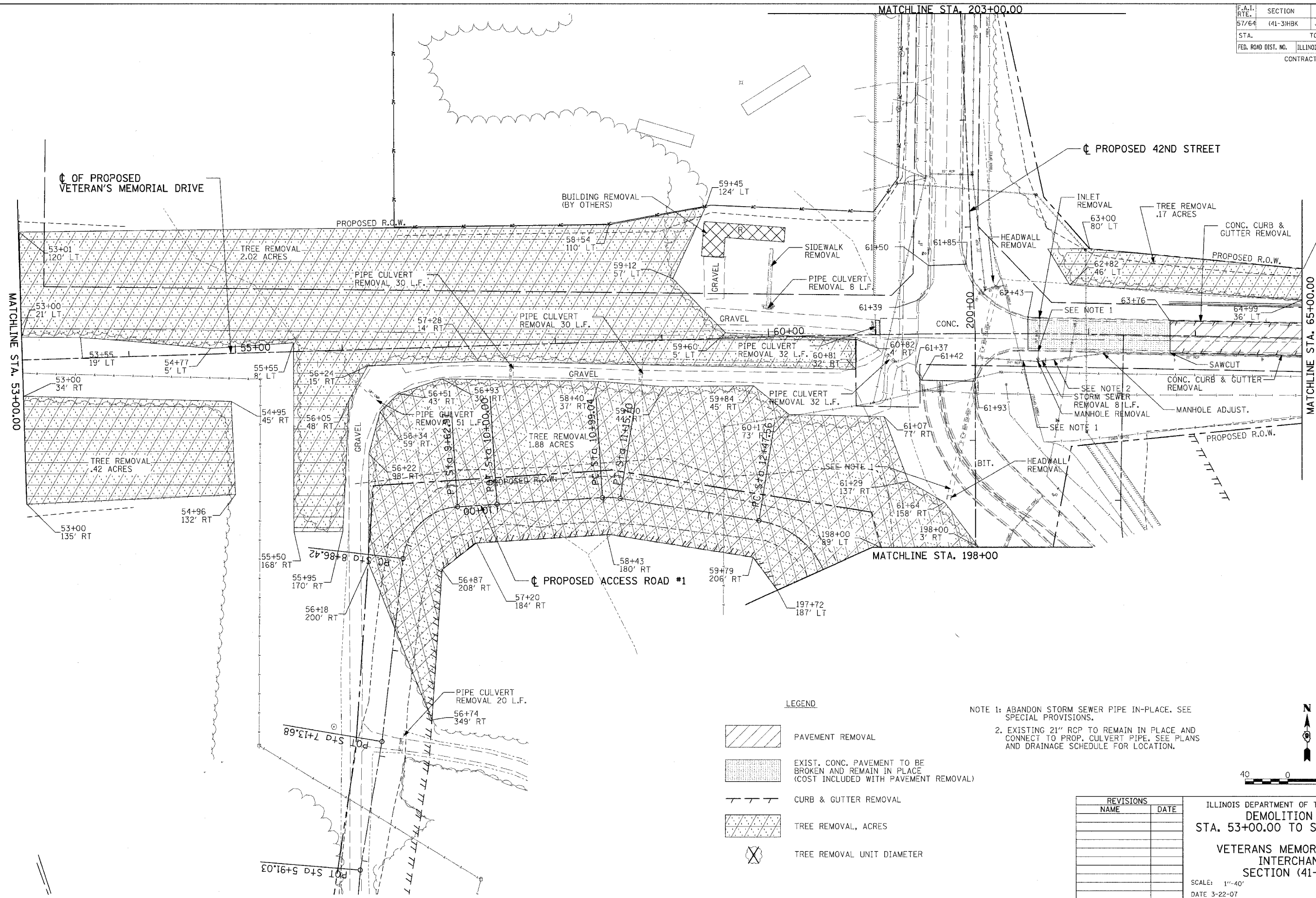


F.A.I. RTE.	SECTION	COUNTY	TOTAL SHEETS	SHEET NO.
57/64	(41-3)HBK	JEFFERSON	518	140
STA.		TO STA.		
FED. ROAD DIST. NO.		ILLINOIS FED. AID PROJECT		
CONTRACT NO. 98963				

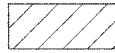

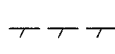
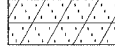



Copyright Hanson Professional Services Inc. 2007
HANSON
 Hanson Professional Services Inc.

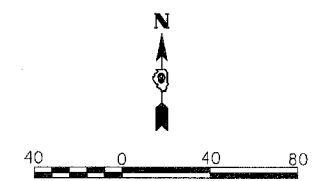
03/22/2007, 03:21 PM
 I:\981098\982019\A\Road\Sheet\c:\l\demo3.dgn

LAYOUT	RLT	02/26/04
DRAWN	JED	04/27/04
REVIEWED	MTM	03/22/07

LEGEND

-  PAVEMENT REMOVAL
-  EXIST. CONC. PAVEMENT TO BE BROKEN AND REMAIN IN PLACE (COST INCLUDED WITH PAVEMENT REMOVAL)
-  CURB & GUTTER REMOVAL
-  TREE REMOVAL, ACRES
-  TREE REMOVAL UNIT DIAMETER

NOTE 1: ABANDON STORM SEWER PIPE IN-PLACE. SEE SPECIAL PROVISIONS.
 2. EXISTING 21" RCP TO REMAIN IN PLACE AND CONNECT TO PROP. CULVERT PIPE. SEE PLANS AND DRAINAGE SCHEDULE FOR LOCATION.



REVISIONS	
NAME	DATE

ILLINOIS DEPARTMENT OF TRANSPORTATION
DEMOLITION PLAN
 STA. 53+00.00 TO STA. 65+00.00
VETERANS MEMORIAL DRIVE INTERCHANGE
 SECTION (41-3)HBK
 SCALE: 1"=40'
 DATE 3-22-07
 DRAWN BY RLT
 CHECKED BY MTM