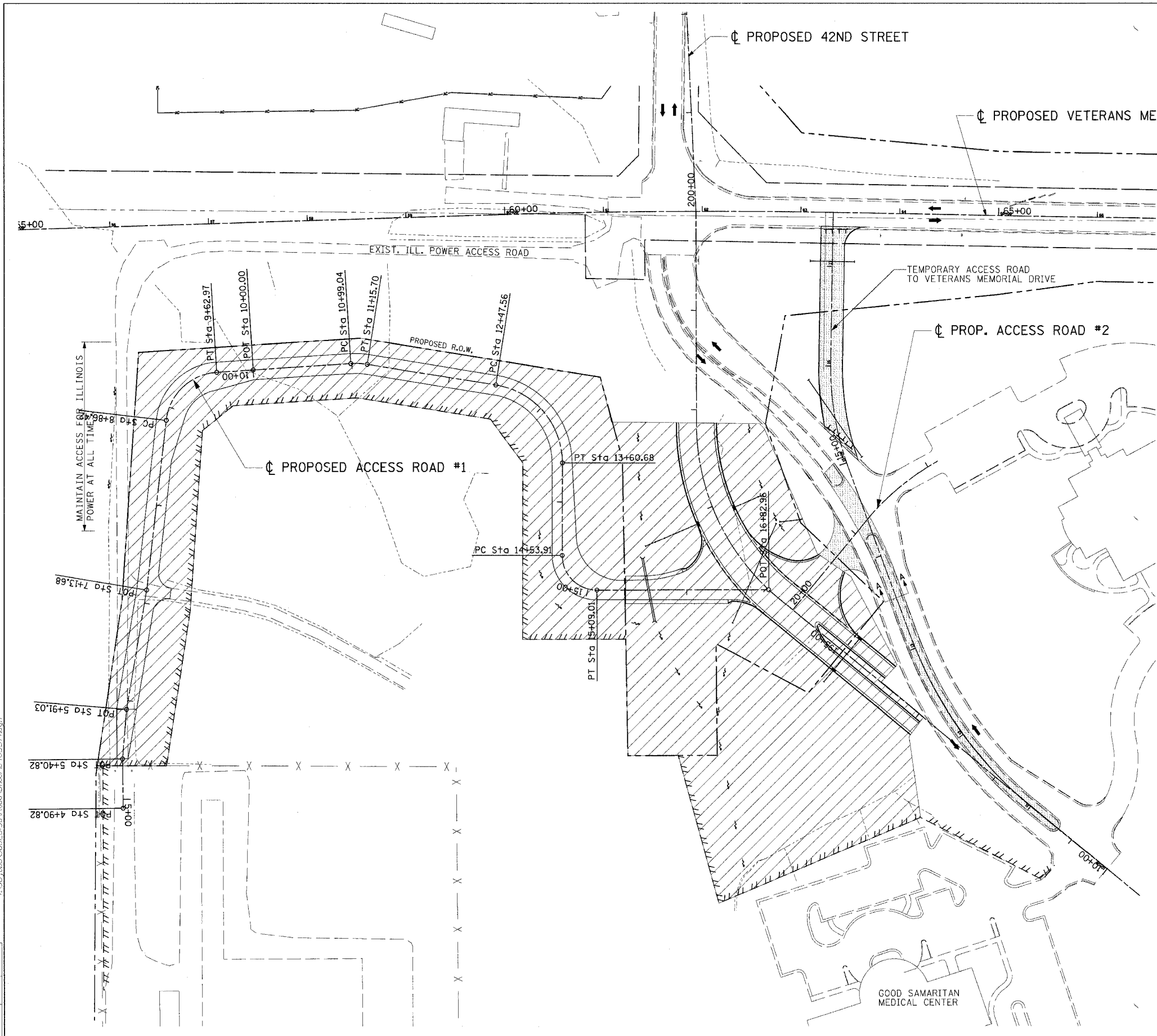
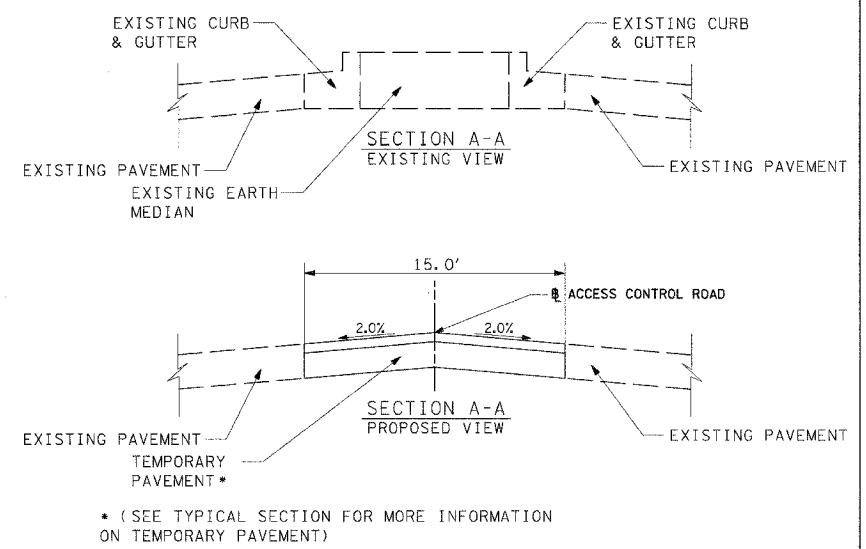


F.A.T. RTE. 57/64	SECTION (41-3)HBK	COUNTY JEFFERSON	TOTAL SHEETS 518	SHEET NO. 138
STA. TO STA.		ILLINOIS FED. AID PROJECT		
FED. ROAD DIST. NO.		CONTRACT NO. 98963		



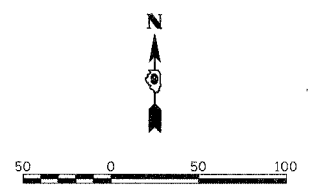
SEQUENCE OF CONSTRUCTION - STAGE 1 TEMPORARY ROAD

1. ACCESS TO THE GOOD SAMARITAN PROPERTIES SHALL BE MAINTAINED AT ALL TIMES WITH TWO-WAY LOCAL TRAFFIC THROUGH WORK ZONE IF APPLICABLE.
2. ALL PROP. STORM SEWERS, CULVERTS AND DITCHES SHALL BE CONSTRUCTED FOREMOST TO PREVENT ANY INTERRUPTION TO THE DRAINAGE FLOW.
3. CONTRACTOR SHALL REMOVE ALL EXISTING ITEMS SHOWN IN THE PLANS, CONSTRUCT EMBANKMENTS, LIME STABILIZED SUB GRADE, AGGREGATE BASE, DRAINAGE ITEMS, PROP. PAVEMENT, CURB AND GUTTER, AND TEMPORARY PAVEMENT WITHIN STAGE 1 WORK ZONE.
4. THE EXISTING EARTH MEDIAN, INCLUDING CURB AND GUTTER, WITHIN THE LIMITS SHOWN ON THE PLANS IS TO BE REMOVED AND REPLACED WITH A TEMPORARY HOT-MIX ASPHALT PAVEMENT. THE EXISTING ROADWAY IS TO REMAIN OPEN BUT MAY BE REDUCED TO ONE LANE DURING DAYTIME HOURS ONLY. USE OF FLAGGERS WILL BE REQUIRED. AT THE CLOSE OF DAY TRAFFIC WILL BE RETURNED TO TWO WAY TRAVEL.
5. THE TEMPORARY ROAD CONNECTION TO VETERANS MEMORIAL DRIVE MAY BE COMPLETED. THE ROADWAY WILL BE BARRICADED AND CLOSED TO TRAFFIC UNTIL APPROVED BY THE ENGINEER IN THE FIELD.



LEGEND

	WORK ZONE
	TYPE III BARRICADE
	TRAFFIC FLOW
	TEMPORARY PAVEMENT



REVISIONS	
NAME	DATE

ILLINOIS DEPARTMENT OF TRANSPORTATION
**MAINTAINANCE OF TRAFFIC PLAN
 STAGE 1**
**VETERANS MEMORIAL DRIVE
 INTERCHANGE
 SECTION (41-3)HBK**
 SCALE: 1"=50'
 DATE 3-22-07
 DRAWN BY RLT
 CHECKED BY MTM

© Copyright Hanson Professional Services, Inc. 2007
HANSON
 Hanson Professional Services Inc.

03/22/2007 03:13 PM
 A:\98 Jobs\98s\2019a\Road\Sheet\c-103ST.dgn

LAYOUT	RLT	07/26/04
DRAWN	JEO	04/12/04
REVIEWED	MTM	03/22/07