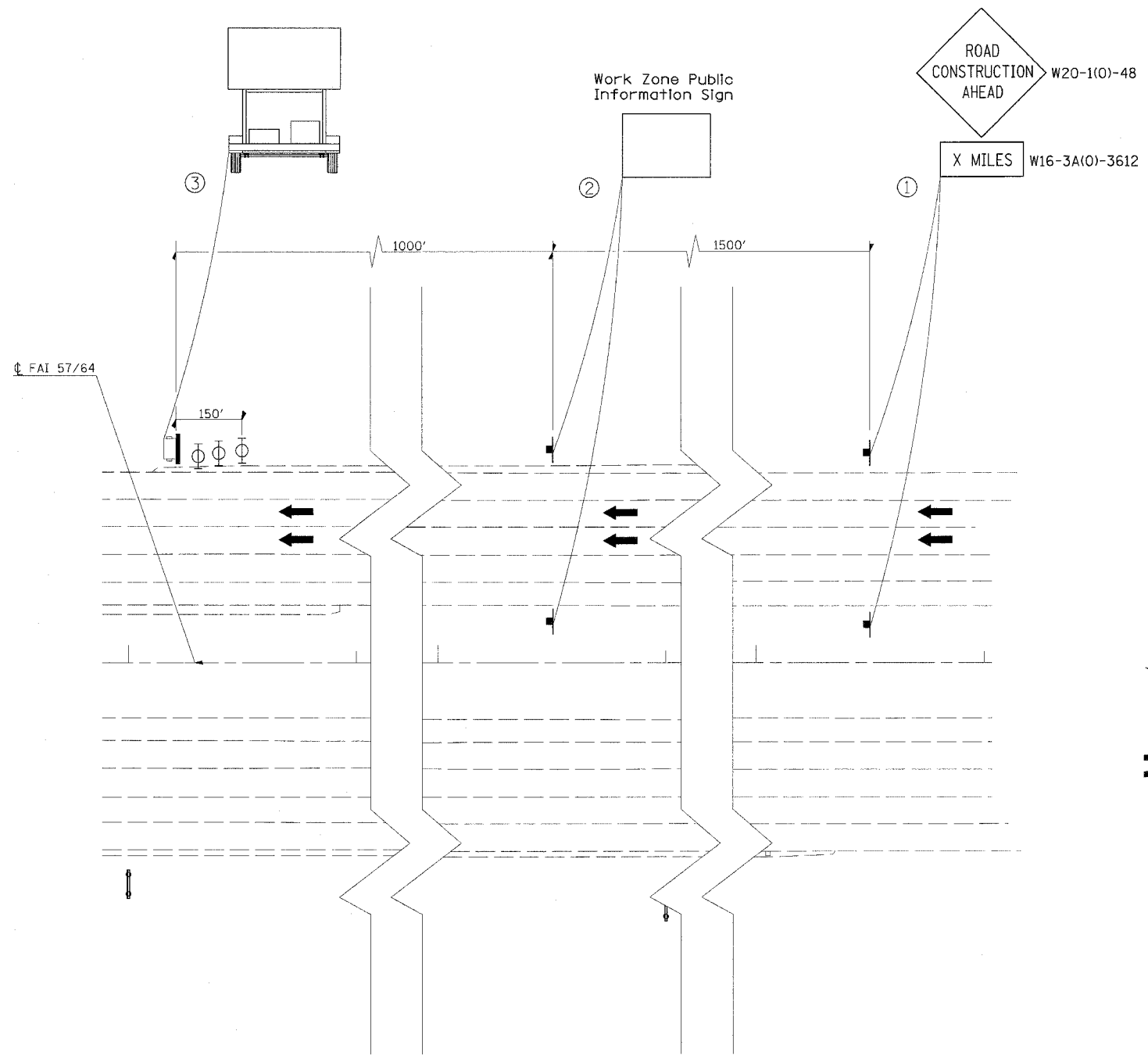


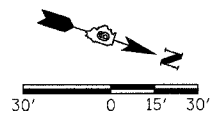
F.A.I. RTE.	SECTION	COUNTY	TOTAL SHEETS	SHEET NO.
57/64	(41-3)HBK	JEFFERSON	518	178
STA.		TO STA.		
FED. ROAD DIST. NO.		ILLINOIS FED. AID PROJECT		



**LEGEND**

- PORTABLE CHANGEABLE MESSAGE SIGN
- SIGN
- TYPE II BARRICADE, DRUM OR VERTICAL BARRICADE WITH MONODIRECTIONAL FLASHING LIGHT
- TRAFFIC FLOW

- ① THE ROAD CONSTRUCTION AHEAD SIGN SHALL BE LOCATED 3 TO 5 MILES IN ADVANCE OF THE PROJECT LIMITS.
- ② THE MESSAGE AND SIZE OF THE WORK ZONE PUBLIC INFORMATION SIGN SHALL BE AS SPECIFIED BY THE DEPARTMENT.
- ③ THE MESSAGE BOARD SHALL BE USED TO DISPLAY STATUS OF LANES WITHIN THE PROJECT. THE PRIMARY MESSAGE SHALL BE: "LANE SHIFT AHEAD" / " MILES AHEAD"



8/3/2007 10:26:26 PM  
 J:\S\98963\98963\DOT\RMPS\revised\32  
 8/3/2007 / IN  
 RL

REVISIONS		ILLINOIS DEPARTMENT OF TRANSPORTATION
NAME	DATE	
		<b>FAI-57/64</b> <b>STAGE 3</b>  <b>SHEET 13 OF 13</b>
SCALE: 1"=30'		DRAWN BY
DATE		CHECKED BY