

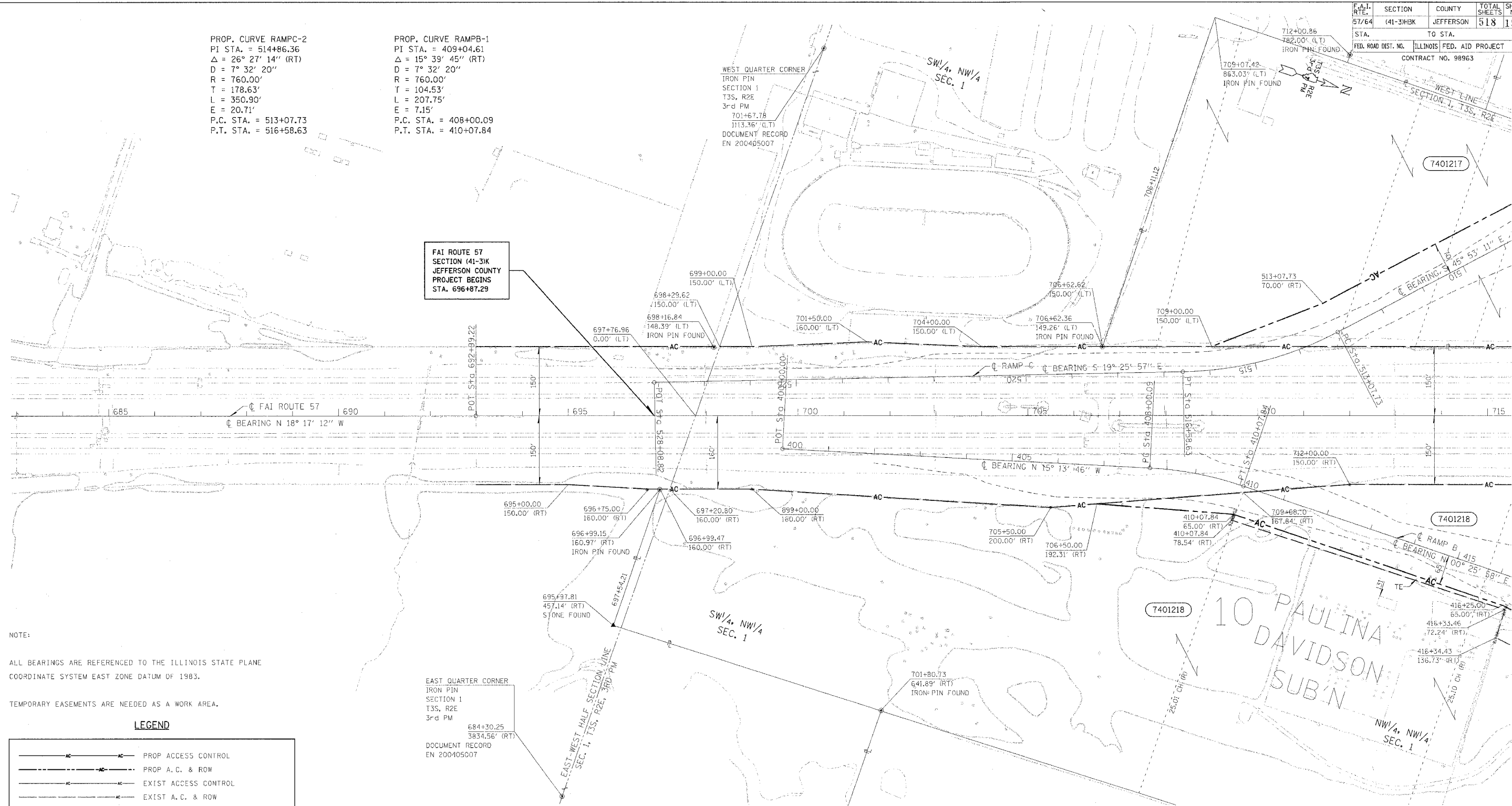
PROP. CURVE RAMPC-2  
 PI STA. = 514+86.36  
 $\Delta = 26^\circ 27' 14''$  (RT)  
 D =  $7^\circ 32' 20''$   
 R = 760.00'  
 T = 178.63'  
 L = 350.90'  
 E = 20.71'  
 P.C. STA. = 513+07.73  
 P.T. STA. = 516+58.63

PROP. CURVE RAMPB-1  
 PI STA. = 409+04.61  
 $\Delta = 15^\circ 39' 45''$  (RT)  
 D =  $7^\circ 32' 20''$   
 R = 760.00'  
 T = 104.53'  
 L = 207.75'  
 E = 7.15'  
 P.C. STA. = 408+00.09  
 P.T. STA. = 410+07.84

WEST QUARTER CORNER  
 IRON PIN  
 SECTION 1  
 T3S, R2E  
 3rd PM  
 701+67.78  
 1113.36' (LT)  
 DOCUMENT RECORD  
 EN 200405007

FAI ROUTE 57  
 SECTION (41-3)K  
 JEFFERSON COUNTY  
 PROJECT BEGINS  
 STA. 696+87.29

EAST QUARTER CORNER  
 IRON PIN  
 SECTION 1  
 T3S, R2E  
 3rd PM  
 684+30.25  
 3834.56' (RT)  
 DOCUMENT RECORD  
 EN 200405007



NOTE:  
 ALL BEARINGS ARE REFERENCED TO THE ILLINOIS STATE PLANE COORDINATE SYSTEM EAST ZONE DATUM OF 1983.  
 TEMPORARY EASEMENTS ARE NEEDED AS A WORK AREA.

**LEGEND**

	PROP ACCESS CONTROL
	PROP A.C. & ROW
	EXIST ACCESS CONTROL
	EXIST A.C. & ROW
	EXIST ROW
	STONE
	CHISELED "4" SECTION CORNER
	BRASS MONUMENT
	IRON PIN
	COTTON GIN SPINDLE
	TEMPORARY CONSTRUCTION EASEMENT
	RECORD DISTANCE
	CONSTRUCTION LIMITS

PARCEL	OWNER	AREA TAKEN		EASEMENT	ACCESS CONTROL	AREA REM	INST	RECORDED		EXCESS	
		ADD	EXIST					MICRO FILM NO	DATE	AREA	SOLD
7401217	JR'S MOBILE HOME SALES	8.324		0.119	966.33 LF	9.250					
7401218	ILLINOIS POWER CO.	5.755		0.675	2004.90 LF	27.284					

RIGHT OF WAY PLANS  
 FAI ROUTE 57  
 PROJECT SECTION (41-3)HBK  
 STATION 685+00 TO 715+00  
 COUNTY JEFFERSON  
 SCALE 100' SHEET 3 OF 7

NOTE: ALL AREAS ARE IN ACRES UNLESS OTHERWISE NOTED.

\$DATE\$\$  
 \*CGN-SPEC\*  
 \$FILE\$  
 DRAWN BY  
 WRITTEN BY  
 CHECKED BY  
 INSPECTED BY