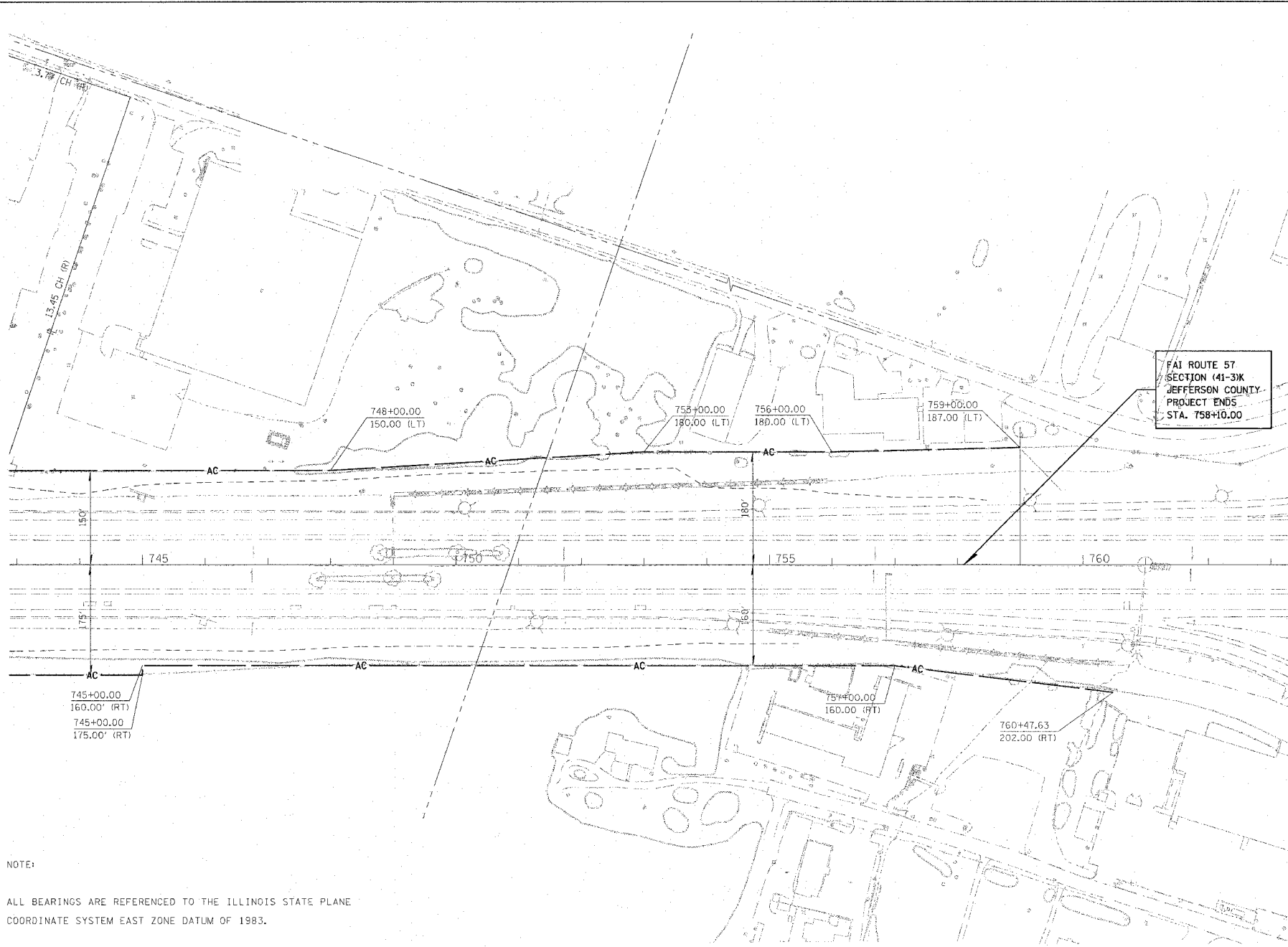
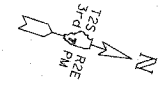


F.A.I. RTE.	SECTION	COUNTY	TOTAL SHEETS	SHEET NO.
57/64	(41-3)HBK	JEFFERSON	518	197
STA.	TO STA.			
FED. ROAD DIST. NO.	ILLINOIS	FED. AID PROJECT		
CONTRACT NO. 98963				



FAI ROUTE 57  
SECTION (41-3)K  
JEFFERSON COUNTY  
PROJECT ENDS  
STA. 758+10.00

NOTE:  
ALL BEARINGS ARE REFERENCED TO THE ILLINOIS STATE PLANE COORDINATE SYSTEM EAST ZONE DATUM OF 1983.

TEMPORARY EASEMENTS ARE NEEDED AS A WORK AREA.

**LEGEND**

— AC — AC —	PROP ACCESS CONTROL
— AC — AC —	PROP A.C. & ROW
— AC — AC —	EXIST ACCESS CONTROL
— AC — AC —	EXIST A.C. & ROW
— AC — AC —	EXIST ROW
▲	STONE
+	CHISELED "+" SECTION CORNER
⊕	BRASS MONUMENT
⊙	IRON PIN
○	COTTON GIN SPINDLE
— TE —	TEMPORARY CONSTRUCTION EASEMENT
(R)	RECORD DISTANCE
---	CONSTRUCTION LIMITS

RIGHT OF WAY PLANS  
FAI ROUTE 57  
PROJECT SECTION( 41-3)HBK  
STATION 743+00 TO  
STATION 758+10.00  
COUNTY JEFFERSON  
SCALE 100' SHEET 5 OF 7

JOB NO. R 97-001-04

NOTE: ALL AREAS ARE IN ACRES UNLESS OTHERWISE NOTED.

DATE  
DGN-SPEC

FILE  
DRAWN BY  
WRITTEN BY  
CHECKED BY  
INSPECTED BY