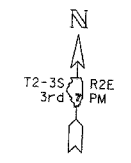


F.A.I. RTE.	SECTION	COUNTY	TOTAL SHEETS	SHEET NO.
57/64	(41-3)HBK	JEFFERSON	13	199
STA.	TO STA.			
FED. ROAD DIST. NO.	ILLINOIS	FED. AID PROJECT		
CONTRACT NO. 98963				

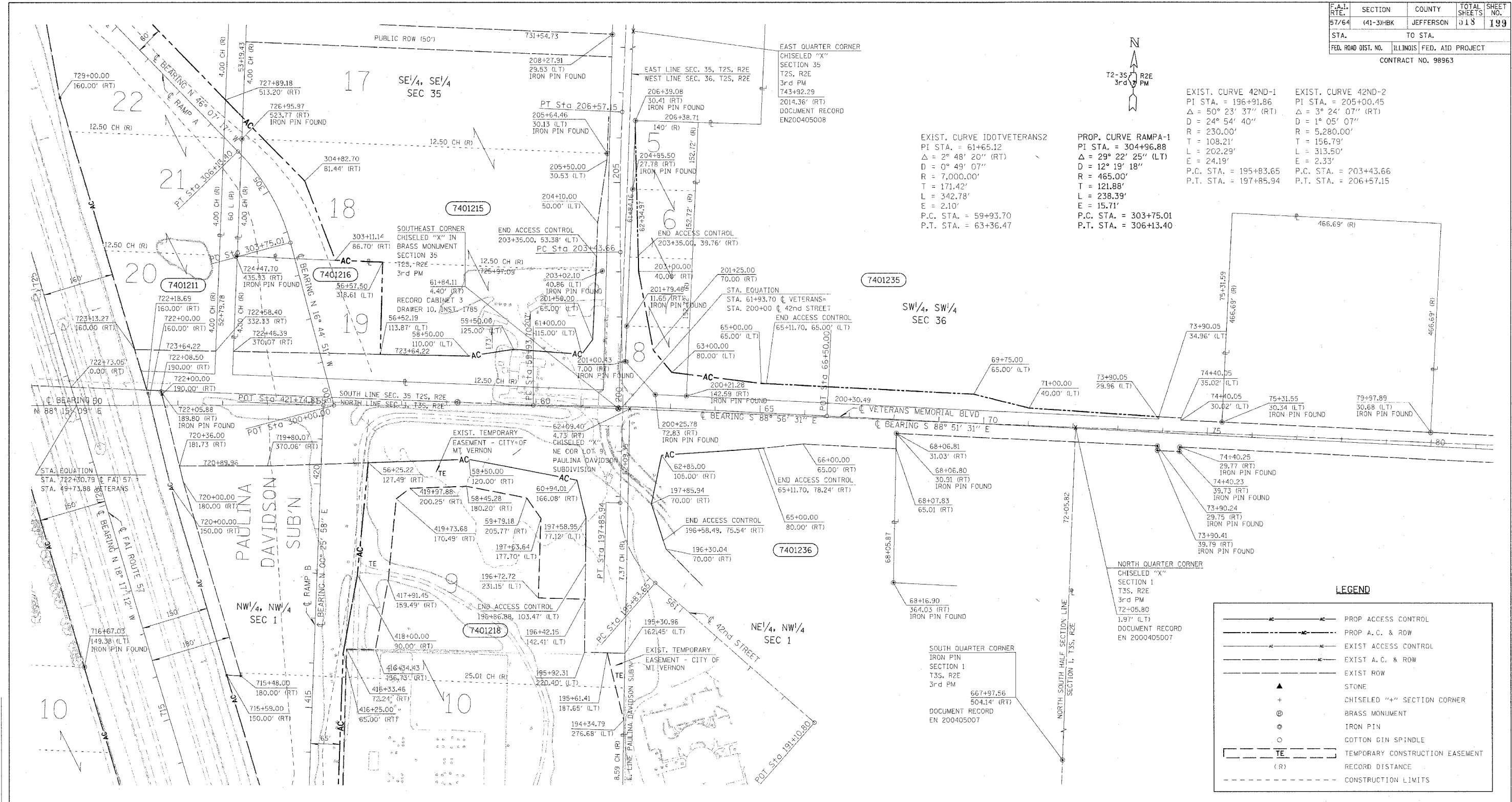


EXIST. CURVE 42ND-1  
 PI STA. = 196+91.86  
 $\Delta = 50^\circ 23' 37''$  (RT)  
 $D = 24^\circ 54' 40''$   
 $R = 230.00'$   
 $T = 108.21'$   
 $L = 202.29'$   
 $E = 24.19'$   
 P.C. STA. = 195+83.65  
 P.T. STA. = 197+85.94

EXIST. CURVE 42ND-2  
 PI STA. = 205+00.45  
 $\Delta = 3^\circ 24' 07''$  (RT)  
 $D = 1^\circ 05' 07''$   
 $R = 5,280.00'$   
 $T = 156.79'$   
 $L = 313.50'$   
 $E = 2.33'$   
 P.C. STA. = 203+43.66  
 P.T. STA. = 206+57.15

EXIST. CURVE 100VETERANS2  
 PI STA. = 61+65.12  
 $\Delta = 2^\circ 48' 20''$  (RT)  
 $D = 0^\circ 49' 07''$   
 $R = 7,000.00'$   
 $T = 171.42'$   
 $L = 342.78'$   
 $E = 2.10'$   
 P.C. STA. = 59+93.70  
 P.T. STA. = 63+36.47

PROP. CURVE RAMPA-1  
 PI STA. = 304+96.88  
 $\Delta = 29^\circ 22' 25''$  (LT)  
 $D = 12^\circ 19' 18''$   
 $R = 465.00'$   
 $T = 121.88'$   
 $L = 238.39'$   
 $E = 15.71'$   
 P.C. STA. = 303+75.01  
 P.T. STA. = 306+13.40



**LEGEND**

	PROP ACCESS CONTROL
	PROP A.C. & ROW
	EXIST ACCESS CONTROL
	EXIST A.C. & ROW
	EXIST ROW
	STONE
	CHISELED "X" SECTION CORNER
	BRASS MONUMENT
	IRON PIN
	COTTON GIN SPINDLE
	TEMPORARY CONSTRUCTION EASEMENT
	RECORD DISTANCE
	CONSTRUCTION LIMITS

PARCEL	OWNER	AREA TAKEN		EASEMENT	ACCESS CONTROL	AREA REM	INST	RECORDED		EXCESS	
		ADD	EXIST					MICRO FILM NO	DATE	AREA	SOLD
7401211	JAMES M. DYCUS	5.487			642.08 LF	2.395					
7401215	B & J FAMILY LIMITED	0.955			1376.15 LF	11.000					
7401216	CITY OF MT. VERNON	1.562			0	0.000					
7401218	ILLINOIS POWER CO.	5.755		0.675	2,004.90 LF	27.284					
7401235	CHICAGO TITLE LAND TRUST CO.	1.106			490.30 LF	52.074					
7401236	GODD SAMARITAN REGIONAL HEAL	0.000			424.00 LF	48.572					

**RIGHT OF WAY PLANS**  
**FAI ROUTE 57**

PROJECT SECTION (41-3)HBK  
 STATION 49+00 VETERANS MEMORIAL DRIVE TO  
 STATION 80+00 VETERANS MEMORIAL DRIVE  
 COUNTY JEFFERSON  
 SCALE 100' SHEET 7 OF 7

NOTE: ALL AREAS ARE IN ACRES UNLESS OTHERWISE NOTED.

NOTE:  
 ALL BEARINGS ARE REFERENCED TO THE ILLINOIS STATE PLANE  
 COORDINATE SYSTEM EAST ZONE DATUM OF 1983.  
 TEMPORARY EASEMENTS ARE NEEDED AS A WORK AREA.

\$DATE\$\$  
 \*DGN-SPEC\*  
 FILE\$  
 DRAWN BY  
 WRITTEN BY  
 CHECKED BY  
 INSPECTED BY

JOB NO. R 97-001-04