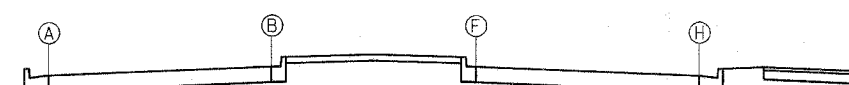
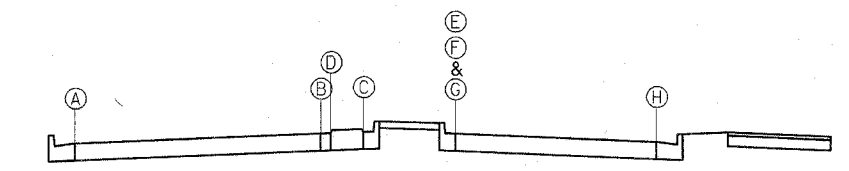


MATCH LINE STA. 71+00.00

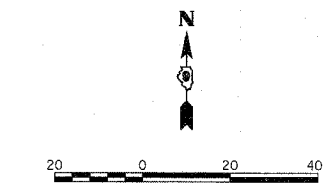
STATION	OFFSETS LEFT OF CL								OFFSETS RIGHT OF CL								
	LT. OEOP (A)		LT. PGL (B)		ISLAND (C)		MEDIAN (D)		MEDIAN (E)		ISLAND (F)		RT. PGL (G)		RT. OEOP (H)		
	OFF	ELEV	OFF	ELEV	OFF	ELEV	OFF	ELEV	OFF	ELEV	OFF	ELEV	OFF	ELEV	OFF	ELEV	
L ₃ I ₄																	
	66+51.71	35.00'	502.55	11.00'	503.03	11.00'	503.03	-	-	-	-	11.00'	503.03	11.00'	503.03	35.00'	502.55
	66+67.34	35.00'	502.81	11.00'	503.29	11.00'	503.29	-	-	-	-	10.99'	503.29	10.99'	503.29	34.98'	502.81
	66+90.34	35.00'	503.20	11.00'	503.68	11.00'	503.68	-	-	-	-	10.93'	503.68	10.93'	503.68	34.86'	503.20
I ₅ R ₃																	
	67+14.36	35+00'	503.60	11.00'	504.08	11.00'	504.08	-	-	-	-	10.82'	504.08	10.82'	504.08	34.63'	503.60
	67+17.34	35+00'	503.65	11.00'	504.13	11.00'	504.13	-	-	-	-	10.81'	504.13	10.81'	504.13	34.60'	503.65
	67+40.34	34.94'	504.03	10.94'	504.51	10.89'	504.51	-	-	-	-	10.65'	504.51	10.65'	504.51	34.27'	504.04
	67+65.34	34.77'	504.45	10.77'	504.93	10.58'	504.93	-	-	-	-	10.42'	504.93	10.42'	504.93	33.80'	504.46
	67+90.34	34.49'	504.87	10.49'	505.35	10.06'	505.35	-	-	-	-	10.14'	505.35	10.14'	505.35	33.21'	504.89
	68+15.34	34.09'	505.28	10.09'	505.76	9.33'	505.76	-	-	-	-	9.80'	505.76	9.80'	505.76	32.50'	505.31
	68+40.34	33.59'	505.70	9.59'	506.18	8.41'	506.20	-	-	-	-	9.41'	506.18	9.41'	506.18	31.68'	505.73
	68+65.34	32.98'	506.12	8.98'	506.60	7.27'	506.63	-	-	-	-	8.96'	506.60	8.96'	506.60	30.75'	506.16
	68+90.34	32.25'	506.54	8.25'	507.02	5.94'	507.07	-	-	-	-	8.45'	507.02	8.45'	507.02	29.69'	506.60
M ₄																	
	69+14.33	31.45'	506.94	7.45'	507.42	4.40'	507.48	6.48'	507.50	-	-	7.91'	507.42	7.91'	507.42	28.58'	507.01
	69+15.34	31.42'	506.94	6.84'	507.43	4.40'	507.48	6.44'	507.49	-	-	7.89'	507.43	7.89'	507.43	28.53'	507.02
I ₃																	
	69+30.99	30.84'	507.20	6.47'	507.69	3.33'	507.75	5.86'	507.77	-	-	7.51'	507.69	7.51'	507.69	22.73'	507.29
	69+40.34	30.47'	507.35	5.41'	507.85	2.65'	507.91	5.50'	507.90	-	-	7.28'	507.85	7.31'	507.85	27.24'	507.45
	69+65.34	29.41'	507.77	4.25'	508.27	0.69'	508.34	4.45'	508.34	-	-	6.68'	508.27	6.74'	508.27	25.84'	507.89
L ₂ I ₁ I ₂ M ₃ R ₂																	
	69+90.34	28.25'	508.19	3.97'	508.68	-1.47'	508.79	3.29'	508.80	-	-	6.13'	508.68	6.14'	508.68	24.32'	508.32
	70+15.34	27.08'	508.60	1.94'	509.10	-	-	2.06'	509.10	5.70'	509.10	-	-	5.70'	509.10	22.82'	508.76
	70+40.34	25.95'	509.02	0.84'	509.52	-	-	0.88'	509.52	5.28'	509.52	-	-	5.28'	509.52	21.43'	509.20
	70+65.34	24.88'	509.44	0.00'	509.94	-	-	-0.25'	509.95	4.82'	509.94	-	-	4.82'	509.94	20.15'	509.63
	70+90.34	23.85'	509.87	0.00'	510.35	-	-	-1.34'	510.38	4.33'	510.35	-	-	4.33'	510.35	18.97'	510.06



SECTION A-A



SECTION B-B



REVISIONS	
NAME	DATE

ILLINOIS DEPARTMENT OF TRANSPORTATION
CHANNELIZATION DETAIL
STA. 65+00.00 TO STA. 71+00.00
VETERANS MEMORIAL DRIVE
INTERCHANGE
SECTION (41-3)HBK
 SCALE: 1"=20'
 DATE 3-22-07
 DRAWN BY RLT
 CHECKED BY MTM

Copyright Hanson Professional Services Inc. 2007
HANSON Professional Services Inc.
 03/22/2007 09:40 AM
 A:\08\080908\2009\Road\Sheet\C-60\ch1.dgn