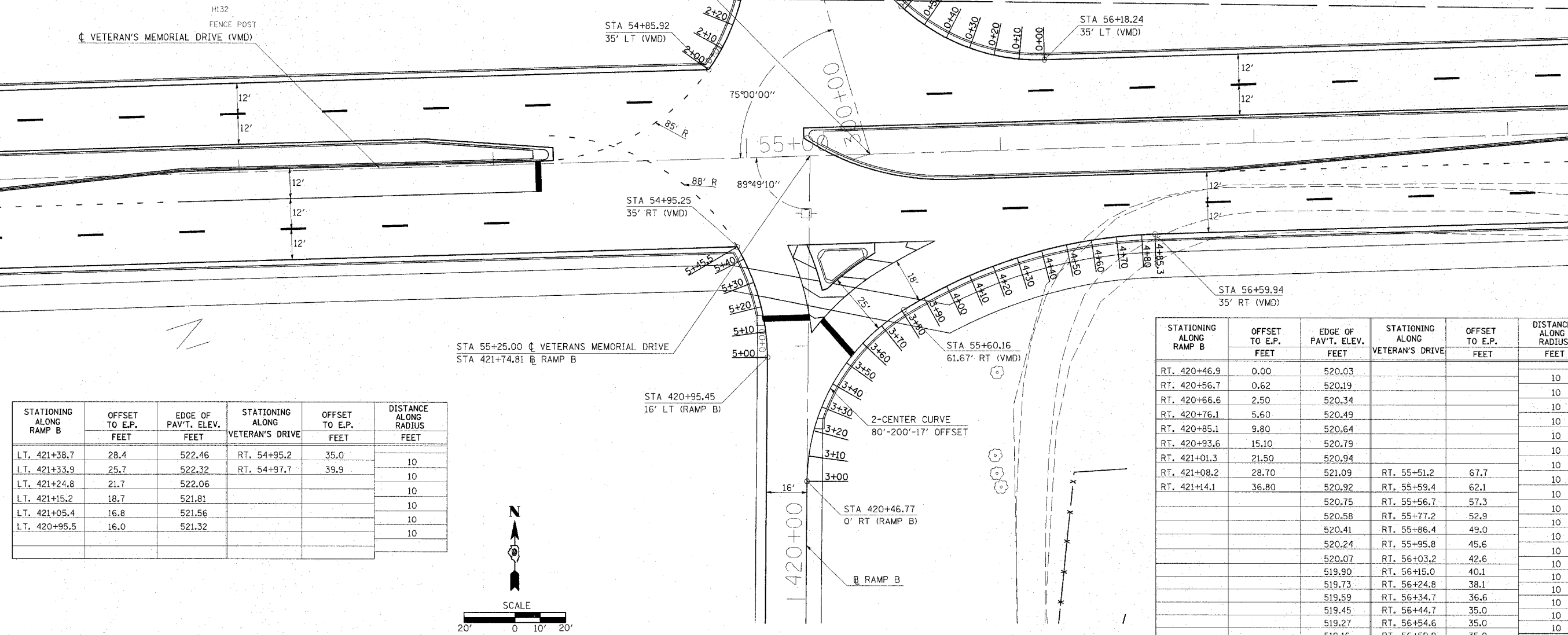


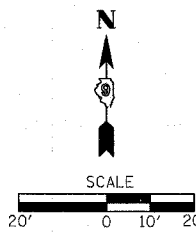
STATIONING ALONG VETERAN'S DRIVE	OFFSET TO E.P. FEET	EDGE OF PAV'T. ELEV. FEET	STATIONING ALONG RAMP A	OFFSET TO E.P. FEET	DISTANCE ALONG RADIUS FEET
LT. 56+18.2	35.0	522.64			10
LT. 56+08.3	43.3	522.33	LT. 300+56.7	44.0	10
LT. 55+98.4	52.3	522.03	LT. 300+64.1	37.4	10
		521.72	LT. 300+72.3	31.6	10
		521.42	LT. 300+81.1	26.9	10
		521.11	LT. 300+90.4	23.2	10
		520.81	LT. 301+00.1	20.7	10
		520.52	LT. 301+10.0	19.3	10
		520.50	LT. 301+10.9	19.0	10

STATIONING ALONG VETERAN'S DRIVE	OFFSET TO E.P. FEET	EDGE OF PAV'T. ELEV. FEET	STATIONING ALONG RAMP A	OFFSET TO E.P. FEET	DISTANCE ALONG RADIUS FEET
LT. 56+18.2	35.0	520.00			10
LT. 56+08.3	35.6	520.16			10
LT. 55+98.4	37.5	520.32			10
LT. 55+88.9	40.6	520.48			10
LT. 55+79.9	44.8	520.64			10
LT. 55+71.4	50.1	520.80	RT. 300+42.5	35.0	10
LT. 55+63.7	56.5	520.96	RT. 300+50.6	29.2	10
LT. 55+56.6	63.5	520.81	RT. 300+59.3	24.2	10
		520.66	RT. 300+69.7	18.9	10
		520.51	RT. 300+78.8	14.9	10
		520.36	RT. 300+88.2	11.4	10
		520.21	RT. 300+97.7	8.3	10
		520.06	RT. 301+07.3	5.7	10
		519.91	RT. 301+17.1	3.6	10
		519.76	RT. 301+26.9	1.9	10
		519.61	RT. 301+36.9	0.8	10
		519.44	RT. 301+46.9	0.2	10
		519.26	RT. 301+54.6	0	10



STATIONING ALONG RAMP B	OFFSET TO E.P. FEET	EDGE OF PAV'T. ELEV. FEET	STATIONING ALONG VETERAN'S DRIVE	OFFSET TO E.P. FEET	DISTANCE ALONG RADIUS FEET
LT. 421+38.7	28.4	522.46	RT. 54+95.2	35.0	10
LT. 421+33.9	25.7	522.32	RT. 54+97.7	39.9	10
LT. 421+24.8	21.7	522.06			10
LT. 421+15.2	18.7	521.81			10
LT. 421+05.4	16.8	521.56			10
LT. 420+95.5	16.0	521.32			10

STATIONING ALONG RAMP B	OFFSET TO E.P. FEET	EDGE OF PAV'T. ELEV. FEET	STATIONING ALONG VETERAN'S DRIVE	OFFSET TO E.P. FEET	DISTANCE ALONG RADIUS FEET
RT. 420+46.9	0.00	520.03			10
RT. 420+56.7	0.62	520.19			10
RT. 420+66.6	2.50	520.34			10
RT. 420+76.1	5.60	520.49			10
RT. 420+85.1	9.80	520.64			10
RT. 420+93.6	15.10	520.79			10
RT. 421+01.3	21.50	520.94			10
RT. 421+08.2	28.70	521.09	RT. 55+51.2	67.7	10
RT. 421+14.1	36.80	520.92	RT. 55+59.4	62.1	10
		520.75	RT. 55+56.7	57.3	10
		520.58	RT. 55+77.2	52.9	10
		520.41	RT. 55+86.4	49.0	10
		520.24	RT. 55+95.8	45.6	10
		520.07	RT. 56+03.2	42.6	10
		519.90	RT. 56+15.0	40.1	10
		519.73	RT. 56+24.8	38.1	10
		519.59	RT. 56+34.7	36.6	10
		519.45	RT. 56+44.7	35.0	10
		519.27	RT. 56+54.6	35.0	10
		519.16	RT. 56+59.9	35.0	10



PLOT DATE = 8/21/2007 11:48 AM
 FILE NAME = I:\98\cbs\982201\DOT RAMP\DOT RAMP\98220655.dwg
 PLOT SCALE = 20.0000 / IN.
 USER NAME = Ken

GEOMETRICS - INTERSECTION RAMPS A/B