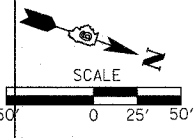
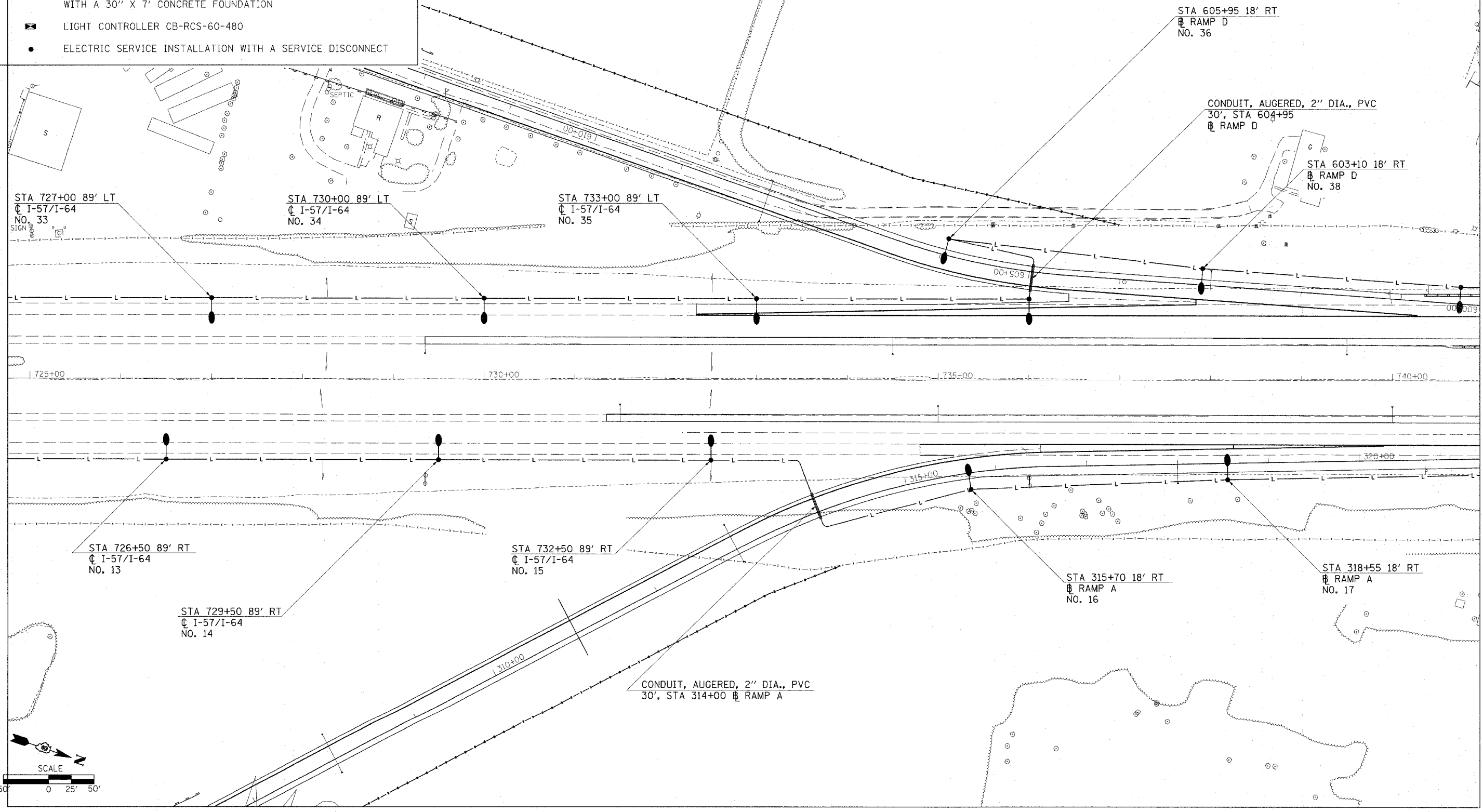


F.A.I. RTE.	SECTION	COUNTY	TOTAL SHEETS	SHEET NO.
57/64	(41-3)HBK	JEFFERSON	518	222
STA.		TO STA.		
FED. ROAD DIST. NO.		ILLINOIS FED. AID PROJECT		

LEGEND

- UNIT DUCT 2 #6 XLP, 1 #6 XLPG, 1" P
- L — CONDUIT, AUGERED, 2" DIA., PVC (LENGTH AS NOTED)
- LIGHT POLE, ALUMINUM, 50' M.H., 15' MAST ARM WITH 400 WATT HPS HORIZONTAL MOUNT LUNAIRE ON A TRANSFORMER BASE WITH A 30" X 7' CONCRETE FOUNDATION
- ⊠ LIGHT CONTROLLER CB-RCS-60-480
- ELECTRIC SERVICE INSTALLATION WITH A SERVICE DISCONNECT



B3\21\2807_09\05.dwg
 EX: 09/26/07 10:52:28 AM
 2007/09/26 10:52:28 AM
 2007/09/26 10:52:28 AM