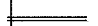
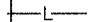



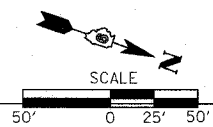
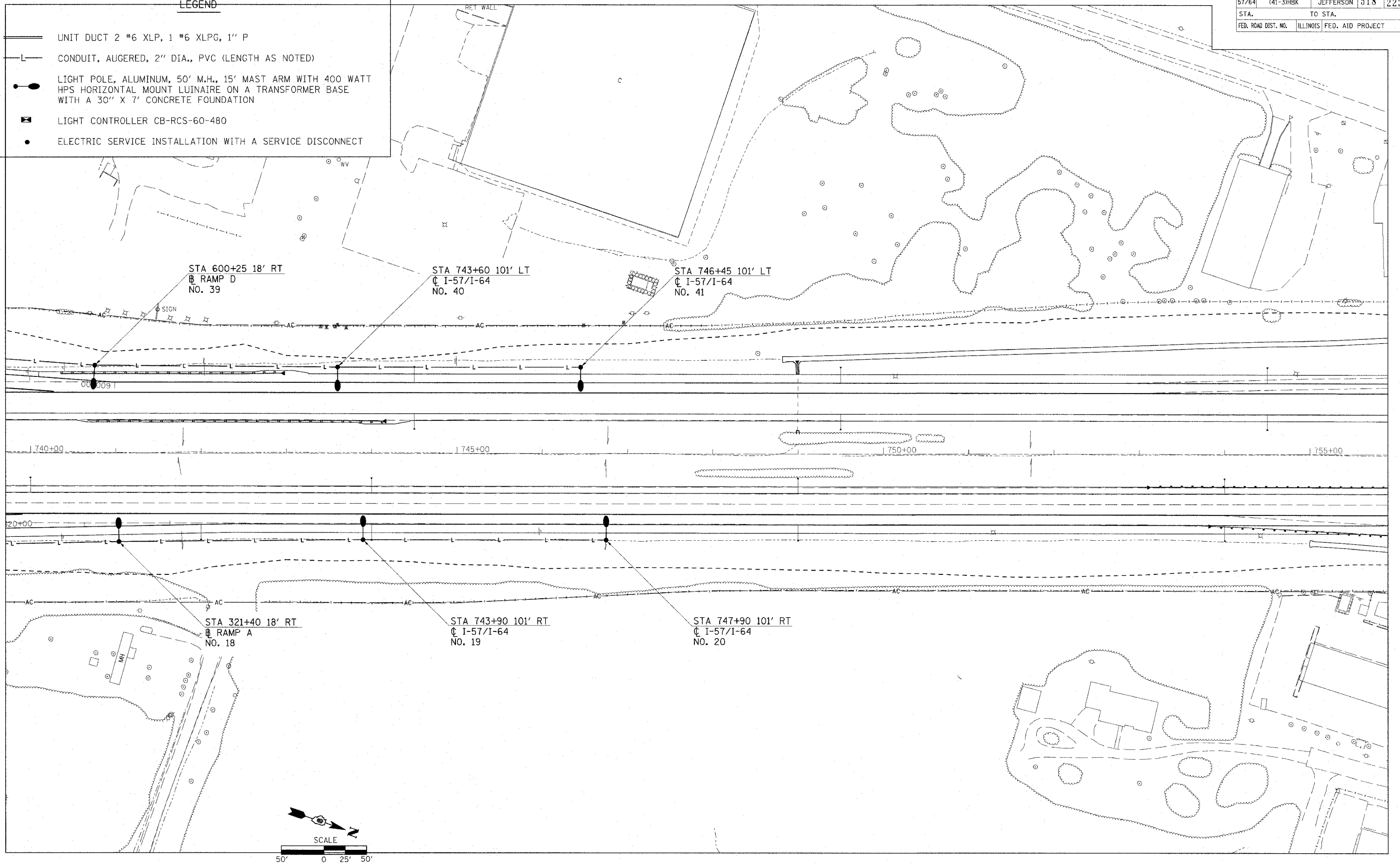


F.A.I. RTE.	SECTION	COUNTY	TOTAL SHEETS	SHEET NO.
57/64	441-3HBK	JEFFERSON	518	223
STA.		TO STA.		
FED. ROAD DIST. NO.		ILLINOIS FED. AID PROJECT		

LEGEND

-  UNIT DUCT 2 #6 XLP, 1 #6 XLPG, 1" P
-  CONDUIT, AUGERED, 2" DIA., PVC (LENGTH AS NOTED)
-  LIGHT POLE, ALUMINUM, 50' M.H., 15' MAST ARM WITH 400 WATT HPS HORIZONTAL MOUNT LUNAIRE ON A TRANSFORMER BASE WITH A 30" X 7' CONCRETE FOUNDATION
-  LIGHT CONTROLLER CB-RCS-60-480
-  ELECTRIC SERVICE INSTALLATION WITH A SERVICE DISCONNECT



03/11/2007 09:55 AM
 1302000 / IN
 Kert