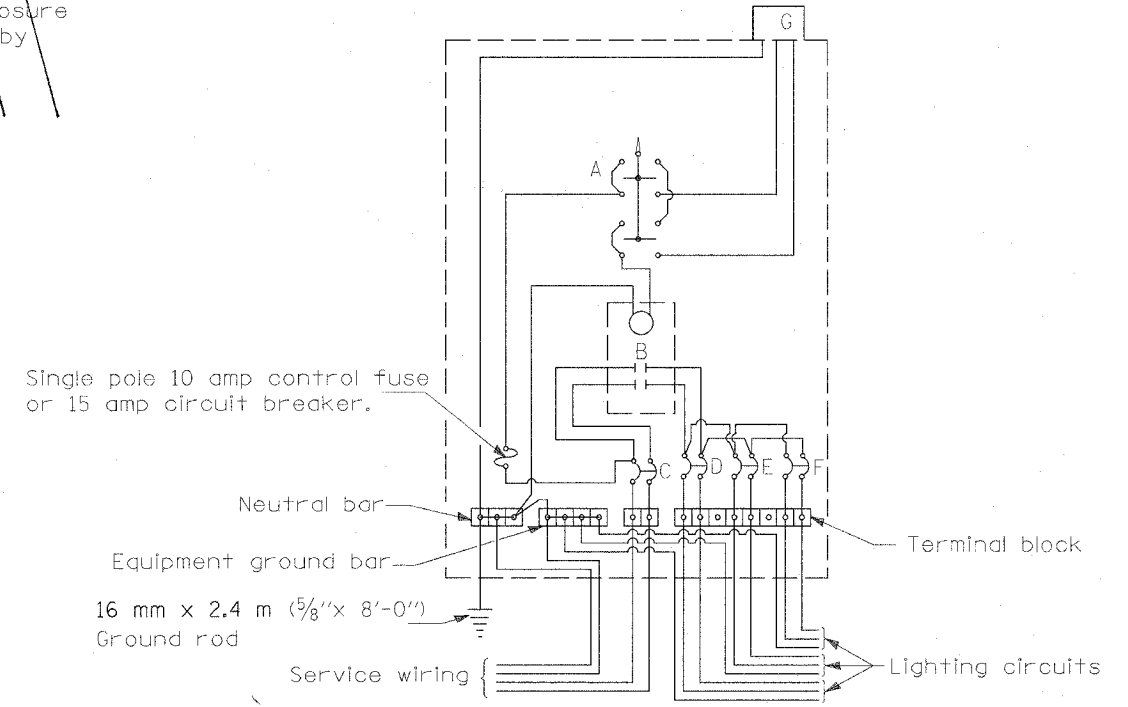


| F.A.I. RTE.         | SECTION   | COUNTY                    | TOTAL SHEETS | SHEET NO. |
|---------------------|-----------|---------------------------|--------------|-----------|
| 57/64               | (41-3)HBK | JEFFERSON                 | 518          | 228       |
| STA.                |           | TO STA.                   |              |           |
| FED. ROAD DIST. NO. |           | ILLINOIS FED. AID PROJECT |              |           |

- A Selector switch
- B 2 Pole 100 amp contactor
- C 2 Pole 60 amp service disconnect
- D,E,F 2 Pole 30 amp breakers
- G Photocell w/integral surge arrester



WIRING DIAGRAM

GENERAL NOTES

Locate service pole and control installation adjacent to R.O.W. line with a minimum distance of 9 m (30') from the edge of pavement. Exact location shall be established by the Engineer.

The underground service entrance wiring shall not exceed 46 m (150'). Total aerial and underground service between the control installation and primary transformer shall not exceed 76 m (250').

Raceways shall terminate 75 (3) above top of concrete foundation.

For 480 V. systems, a 480/120 V. control transformer will be required.

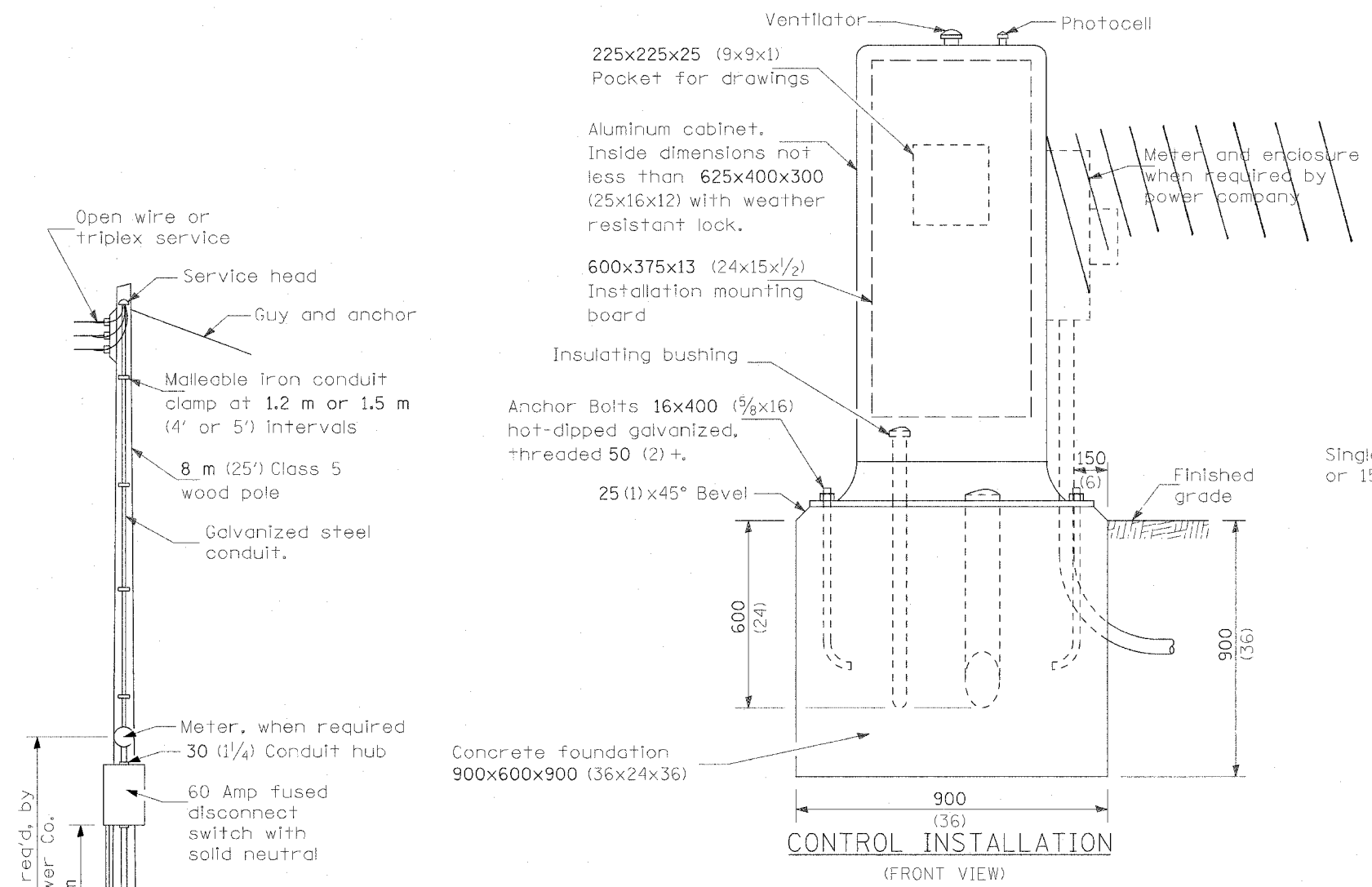
All dimensions are in millimeters unless otherwise shown.

- 240 V. SERVICE
- 480 V. SERVICE

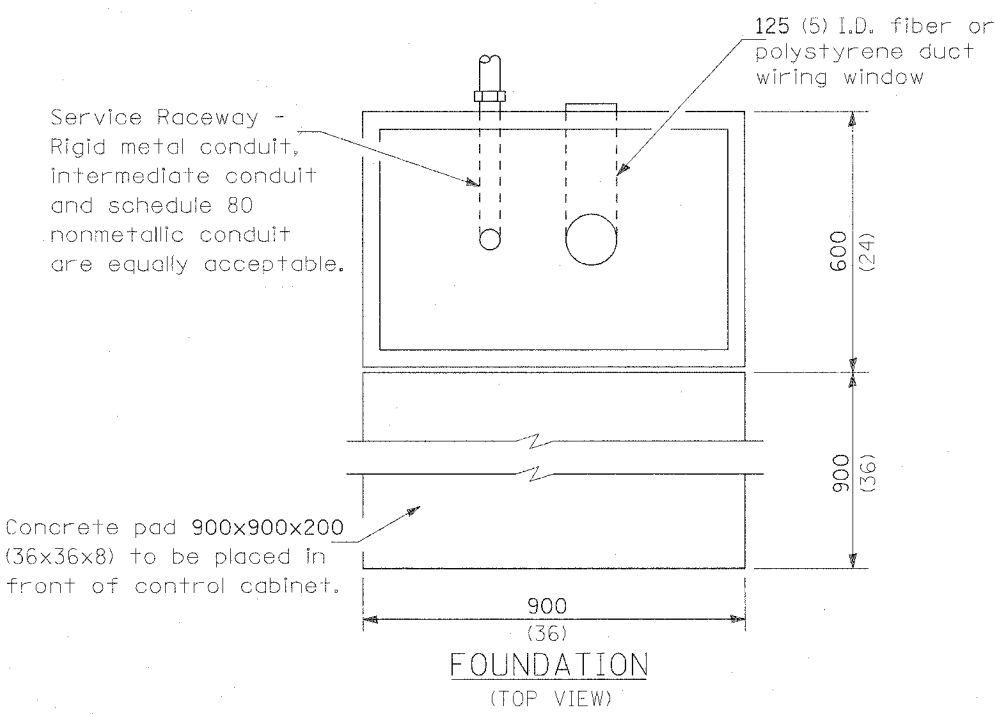
| DATE | REVISIONS |
|------|-----------|
|      |           |
|      |           |
|      |           |
|      |           |
|      |           |

CONTROL INSTALLATION  
TYPE CB-RCS-100

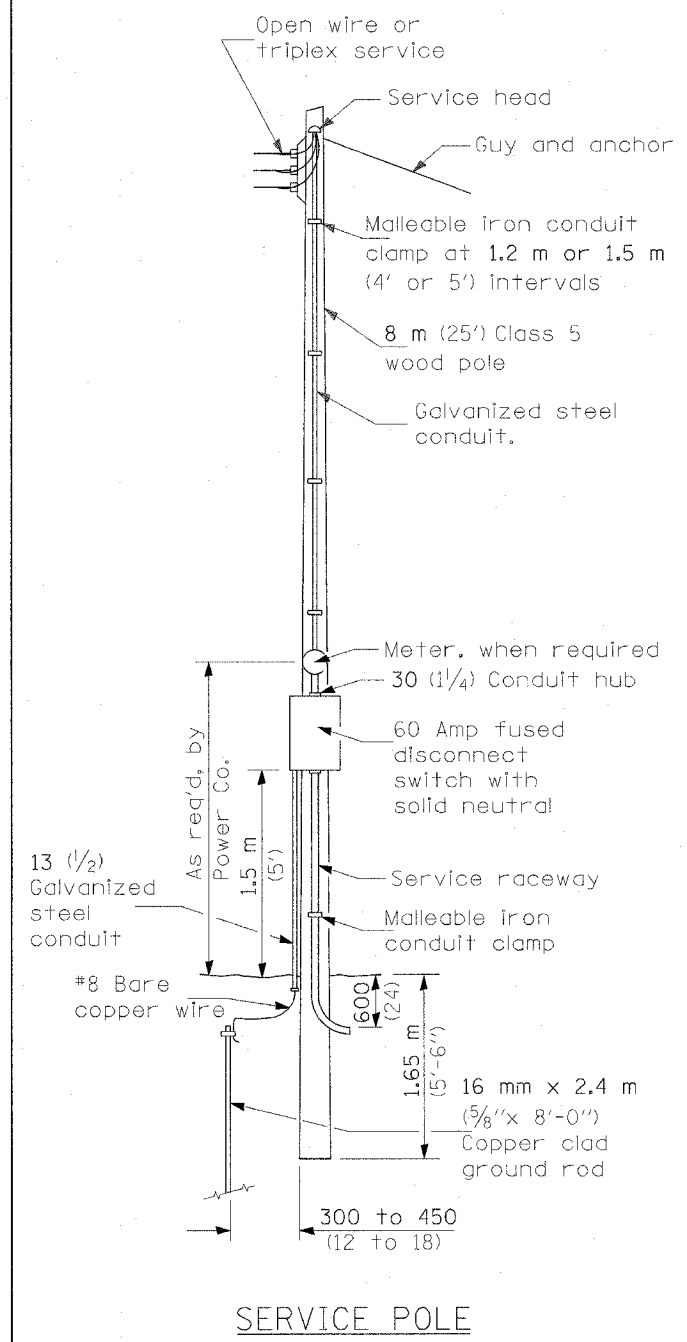
CONTROL INSTALLATION DETAIL



CONTROL INSTALLATION  
(FRONT VIEW)



FOUNDATION  
(TOP VIEW)



SERVICE POLE

PLOT DATE = 03/21/2007 10:09 AM  
 FILE NAME = I:\PROJECTS\98963\13\1301\_RANPS\98963.dwg  
 PLOT SCALE = 1:20000 / IN.  
 USER NAME = KES