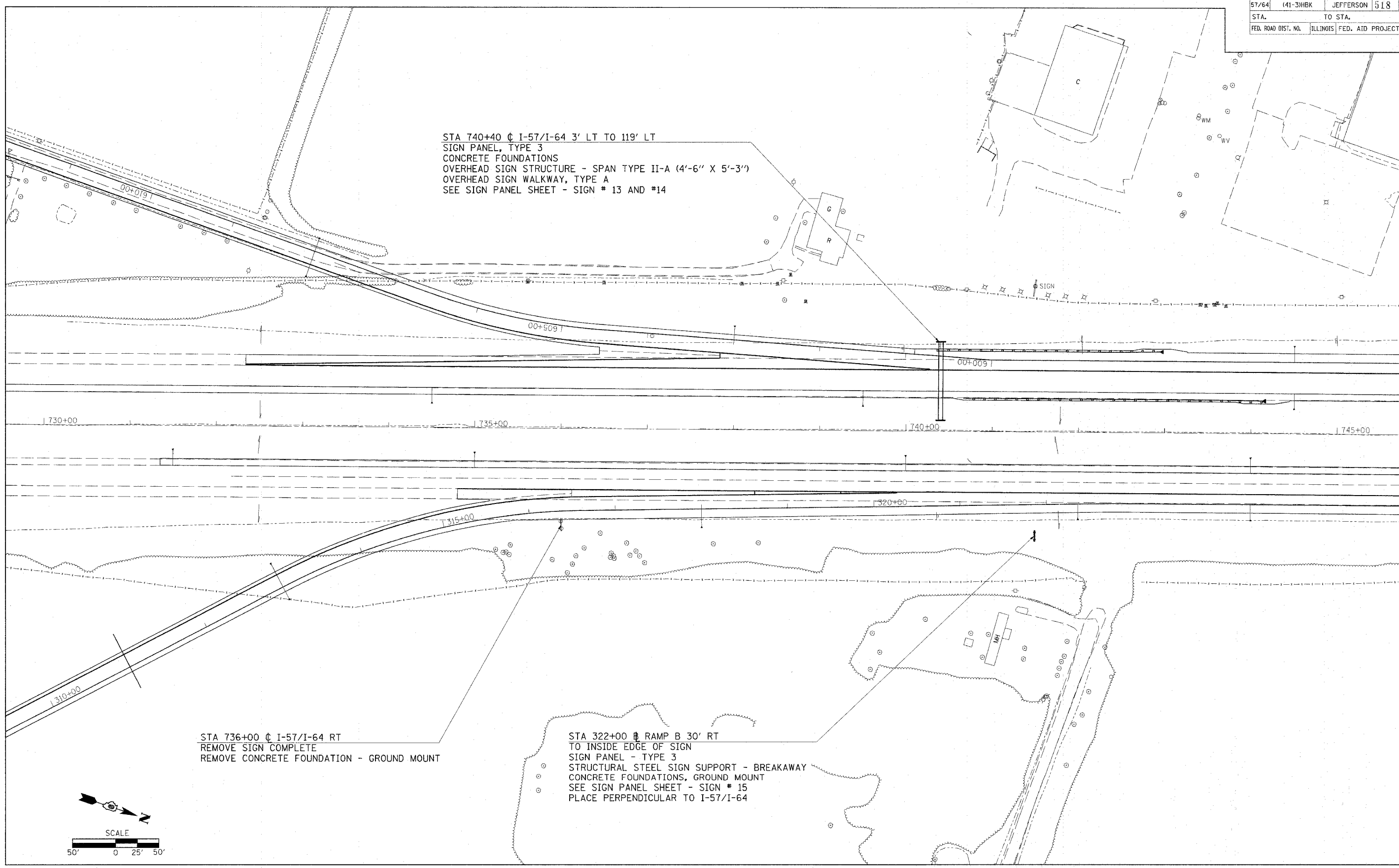


F.A.I. RTE.	SECTION	COUNTY	TOTAL SHEETS	SHEET NO.
57/64	(41-3)HBK	JEFFERSON	518	239
STA.		TO STA.		
FED. ROAD DIST. NO.		ILLINOIS FED. AID PROJECT		



STA 740+40 C I-57/I-64 3' LT TO 119' LT
 SIGN PANEL, TYPE 3
 CONCRETE FOUNDATIONS
 OVERHEAD SIGN STRUCTURE - SPAN TYPE II-A (4'-6" X 5'-3")
 OVERHEAD SIGN WALKWAY, TYPE A
 SEE SIGN PANEL SHEET - SIGN # 13 AND #14

STA 736+00 C I-57/I-64 RT
 REMOVE SIGN COMPLETE
 REMOVE CONCRETE FOUNDATION - GROUND MOUNT

STA 322+00 B RAMP B 30' RT
 TO INSIDE EDGE OF SIGN
 SIGN PANEL - TYPE 3
 STRUCTURAL STEEL SIGN SUPPORT - BREAKAWAY
 CONCRETE FOUNDATIONS, GROUND MOUNT
 SEE SIGN PANEL SHEET - SIGN # 15
 PLACE PERPENDICULAR TO I-57/I-64

03/21/2007 09:05 AM
 50.0000 / IN.
 50.0000 / IN.
 50.0000 / IN.