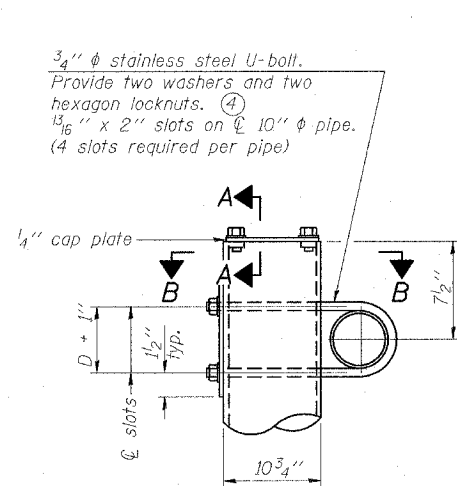
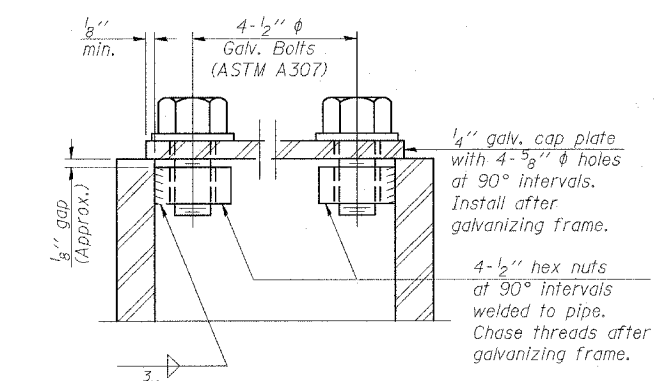


F.A.I. RTE.	SECTION	COUNTY	TOTAL SHEETS	SHEET NO.
57/64	(41-3)HBK	JEFFERSON	25	7
STA.	TO STA.			
FED. ROAD DIST. NO.	ILLINOIS	FED. AID PROJECT		

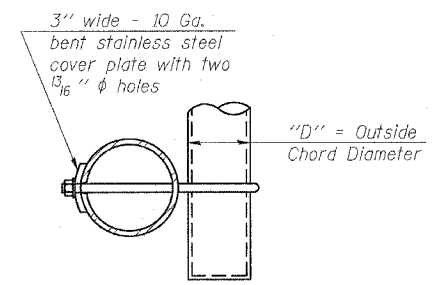


DETAIL A

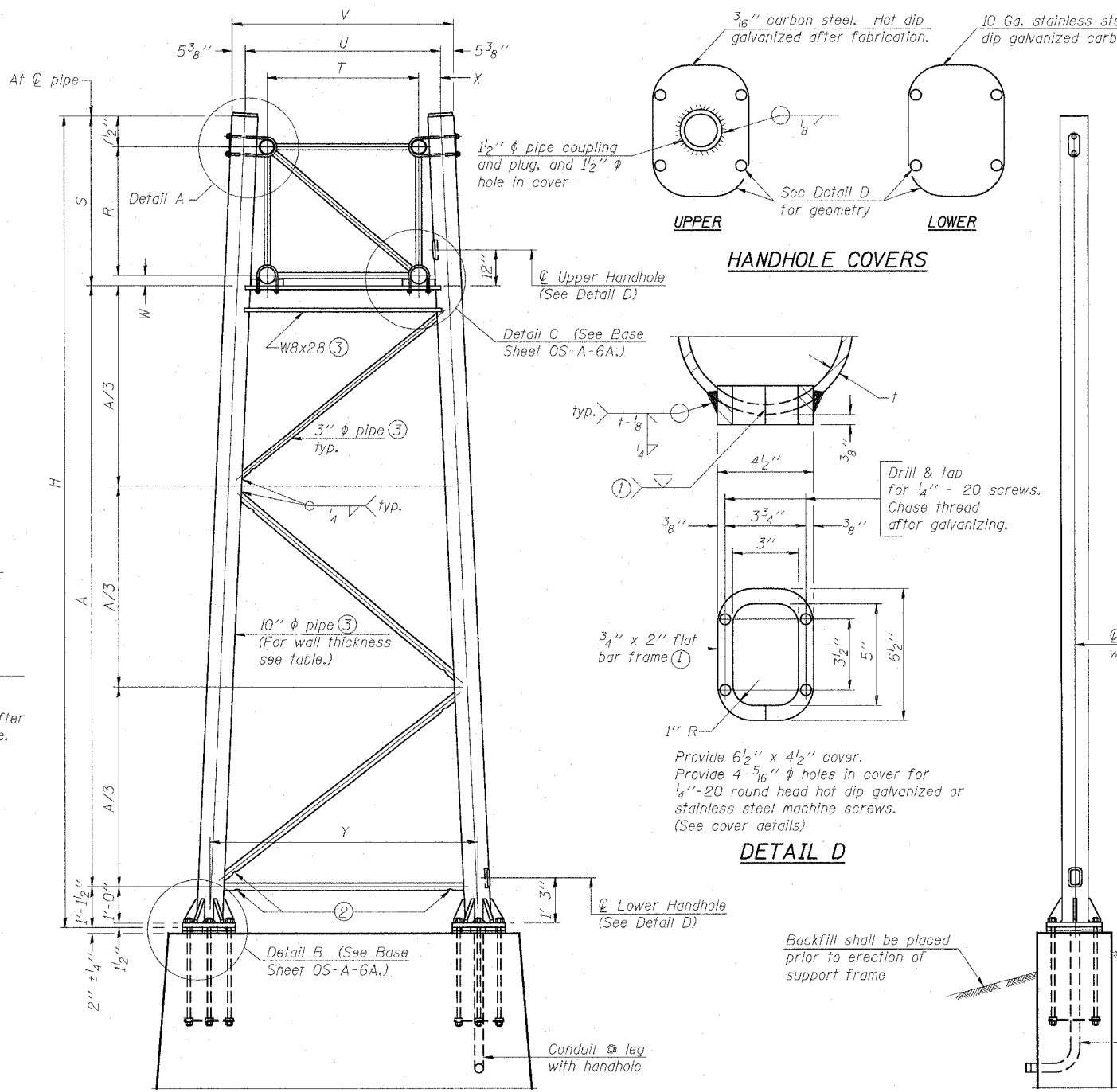


SECTION A-A

As an alternate to bolts, may use galvanized drive-fit caps installed after galvanizing frame.



SECTION B-B



SIDE ELEVATION

END ELEVATION

For Foundation Details, see base sheet OS-F3 (Spread Footing) or OS4-F3 (Drilled Shaft).

10" ϕ PIPE TRUSS SUPPORT FRAME

Truss Type	Dimensions							
	R	S	T	U	V	W	X	Y
I-A	4'-6"	5'-5 1/2"	4'-0"	5'-6"	6'-4 3/4"	4"	9"	8'-3"

NUMBER	REVISION	DATE

Support Design Loads: See Base Sheet OS-A-1 for design and loading criteria.
 Load combinations checked include deadload plus:
 a) 100% wind normal to sign, 20% parallel to sign
 b) 60% wind normal to sign, 30% parallel to sign

- In lieu of fabricated handhole frame as shown, may cut from 2" plate (rolling direction vertical). All cut faces to be ground to ANSI Roughness of 500 μ in or less.
- Galvanizing vent holes of adequate size shall be provided on underside at each end of bracing pipes. Alternately, holes may be provided in wall of pipe column. All vent holes shall be drilled and de-burred, typ.
- Steel pipe, plate, carbon steel handhole covers and rolled sections shall be hot dip galvanized after fabrication. Painting is not permitted. See Base Sheet OS-A-1.
- See General Notes for fasteners.
- Dimensions shown are based on selection criteria in the Sign Structures Manual. Nonstandard applications must have dimensions verified or amended as appropriate.
- "H" based on 15'-0" or actual sign height, whichever is greater.

Structure Number	Station	Support		Truss Type	Pipe Wall Thickness	H (6)	A
		Left	Right				
9S041I057R093.3	700+50	X		I-A	0.279	28.8	22.3
9S041I057R093.3	700+50		X	I-A	0.279	28.0	21.5
9S041I057L094.0	740+40	X		I-A	0.279	28.0	21.5
9S041I057L094.0	740+40		X	I-A	0.279	29.8	23.3

3" Galvanized Steel Conduit. Thread and cap both ends.

Backfill shall be placed prior to erection of support frame

Provide 6 1/2" x 4 1/2" cover. Provide 4-5/16" ϕ holes in cover for 1/4"-20 round head hot dip galvanized or stainless steel machine screws. (See cover details)

Drill & tap for 1/4" - 20 screws. Chase thread after galvanizing.

PLOT DATE = 9/11/2007
 FILE NAME = c:\projects\final\consultant\vev\mch\vev\dot supplied_info\dwg2006sgn.dgn
 PLOT SCALE = 50.0000 / IN.
 USER NAME = mchslcr

REVISIONS		ILLINOIS DEPARTMENT OF TRANSPORTATION
NAME	DATE	
		OVERHEAD SIGN STRUCTURES SUPPORT FRAME for ALUMINUM TRUSS

SCALE: VERT. NONE
 HORIZ. NONE
 DATE: DRAWN BY: CHECKED BY: