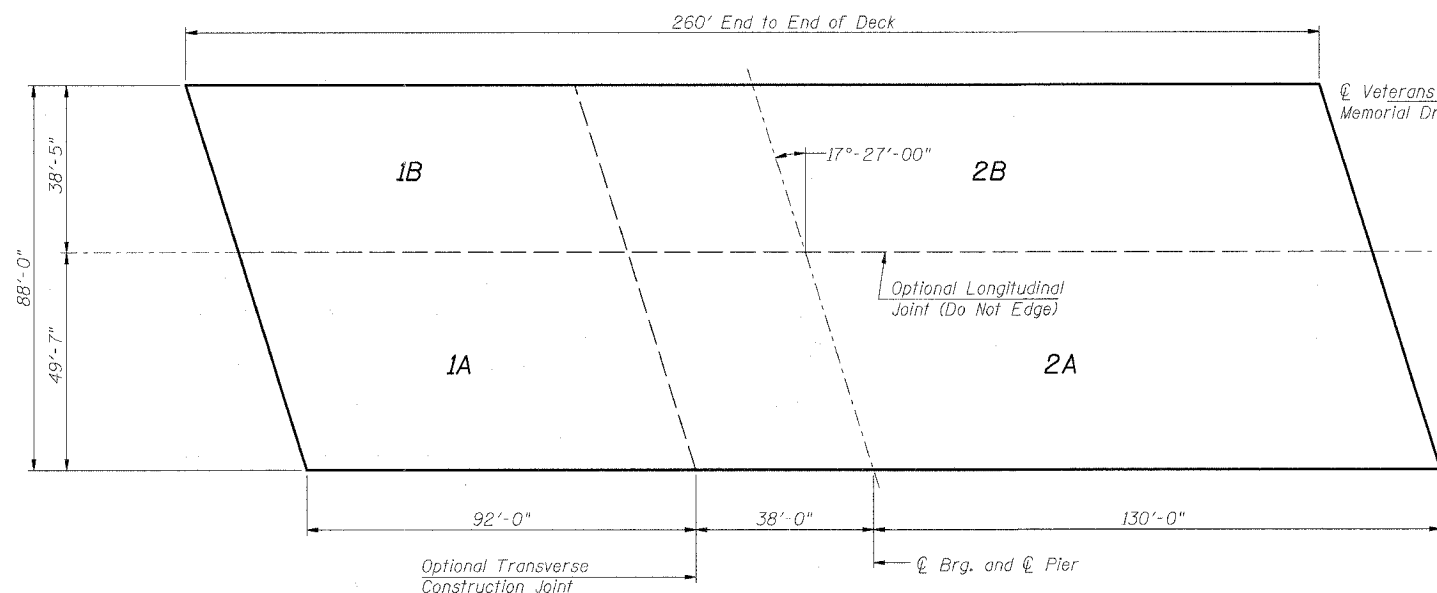


F.A.I. RTE.	SECTION	COUNTY	TOTAL SHEETS	SHEET NO.
57/64	41-3)HBK	JEFFERSON	518	272
STA.	TO STA.			
FED. ROAD DIST. NO.	ILLINOIS	FED. AID PROJECT	CONTRACT NO. 98963	

Sheet 2 of 25

GENERAL NOTES

- Fasteners shall be AASHTO M164 Type 1, mechanically galvanized bolts. Bolts $\frac{7}{8}$ in. ϕ , holes $\frac{15}{16}$ in. ϕ , unless otherwise noted.
- Calculated weight of Structural Steel: AASHTO M270 Grade 36 = 50280 lbs.
AASHTO M270 Grade 50 = 708350 lbs.
- No field welding is permitted except as specified in the contract documents.
- Reinforcement bars shall conform to the requirements of ASTM A 706 Gr 60 (IL Modified). See Special Provisions
- Reinforcement bars designated (E) shall be epoxy coated.
- The embankment configuration shown shall be the minimum that must be placed and compacted prior to construction of the abutments.
- Bearing seat surfaces shall be constructed or adjusted to their designated elevations within a tolerance of $\frac{1}{8}$ inch (0.01 ft.). Adjustment shall be made either by grinding the surface or by shimming the bearings.
- The Contractor shall drive test piles to 110% of the nominal required bearing specified in production locations at substructures specified or approved by the Engineer before ordering the remainder of piles.
- In lieu of the hammer selection criteria and use of the FHWA Modified Gates formula specified in Section 512 of the Standard Specifications, the Contractor shall conduct a wave equation analysis to establish the driving criteria at all pile foundations which specify a nominal required bearing above 600 kips. The analysis and calculations shall be submitted to the Engineer for approval.
- When the deck pour is stopped for the day at one or more of the transverse bonded construction joints in the deck pouring sequence as shown, the next pour shall not be made until both of the following are met:
 - At least 72 hours shall have elapsed from the end of the previous pour.
 - The concrete strength shall have attained a minimum flexural strength of 650 psi or a minimum compressive strength of 3500 psi.
- The Inorganic Zinc Rich Primer / Acrylic / Acrylic Paint System shall be used for shop and field painting of new structural steel except where otherwise noted. The color of the final finish coat for all interior steel surfaces shall be gray, Munsell No. 5B 7/1. The color of the final finish coat for the exterior and bottom flange of the fascia beams shall be Interstate Green, Munsell No. 7.5G 4/8. See Special Provision for "Cleaning and Painting New Metal Structures".
- Slipforming of parapet at south edge of structure will not be allowed.

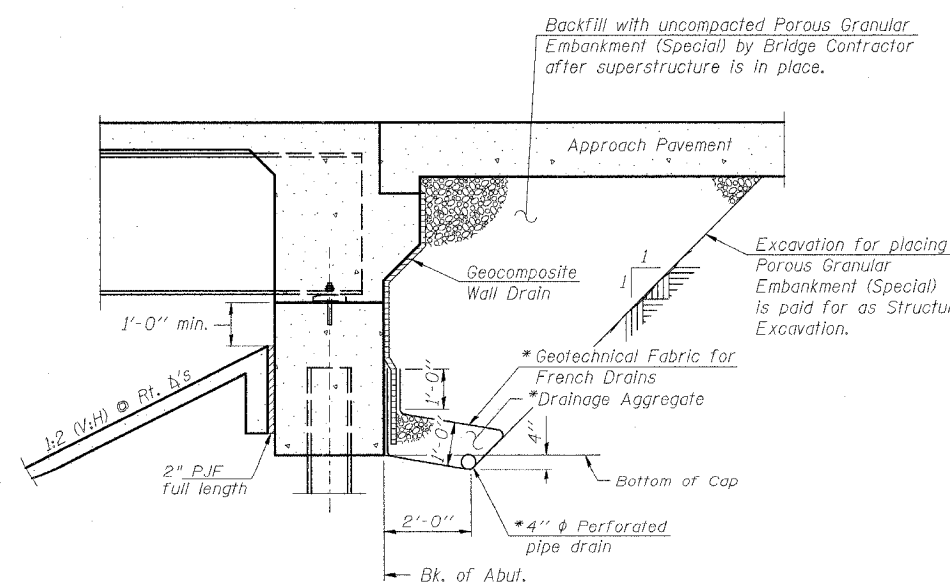


DECK POURING SEQUENCE

The concrete deck segments shall be poured in the numerical order shown above.

INDEX OF SHEETS

- GENERAL PLAN and ELEVATION
- GENERAL NOTES
- TOP of SLAB ELEVATIONS (Sheet 1)
- TOP of SLAB ELEVATIONS (Sheet 2)
- TOP of SLAB ELEVATIONS (Sheet 3)
- TOP of WEST APPROACH SLAB ELEVATIONS
- TOP of EAST APPROACH SLAB ELEVATIONS
- SUPERSTRUCTURE
- RAISED MEDIAN DETAILS
- PARAPET DETAILS
- END DIAPHRAGM DETAILS
- SUPERSTRUCTURE DETAILS
- BRIDGE FENCE RAILING PARAPET MOUNTED BICYCLE RAILING
- DRAINAGE SCUPPER, DS-12
- STRUCTURAL STEEL
- STRUCTURAL STEEL DETAILS
- BEARING DETAILS
- WEST ABUTMENT
- EAST ABUTMENT
- PIER DETAILS (Sheet 1 of 2)
- PIER DETAILS (Sheet 2 of 2)
- BAR SPLICER ASSEMBLY DETAILS
- PILE DETAILS
- BORINGS

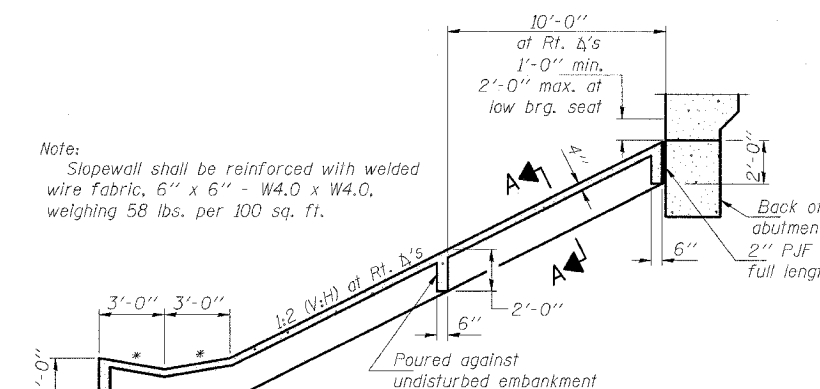


SECTION THRU INTEGRAL ABUTMENT

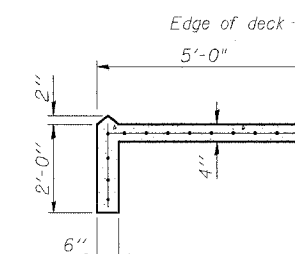
(Horiz. dim. @ Rt. L's)

* Included in the cost of Pipe Underdrains for Structures 4".

Note:
All drainage system components shall extend to 2'-0" from the end of each wingwall except an outlet pipe shall extend until intersecting with the side slopes. The pipes shall drain into concrete headwalls. (See Article 601.05 of the Standard Specifications and Highway Standard 601101).



SECTION THRU CONCRETE SLOPEWALL



SECTION A-A

GENERAL NOTES
VETERANS MEMORIAL DR. over F.A.I. ROUTES 57/64
SECTION (41-3)HBK
JEFFERSON COUNTY
STATION 49+72.27
STRUCTURE NO. 041-0108

© Copyright Hanson Professional Services Inc. 2007



JOB NO.

98S2019A

DATE

03-14-07

March 2007 Submittal
 05/03/07 03:43 PM
 8FLEB
 LAYOUT MNN 03/12/07
 DRAWN DAB 03/12/07
 REVIEWED / / /
 LAYOUT GBR 02/02/04
 DRAWN RFD 02/02/04
 REVIEWED TEH 02/02/04