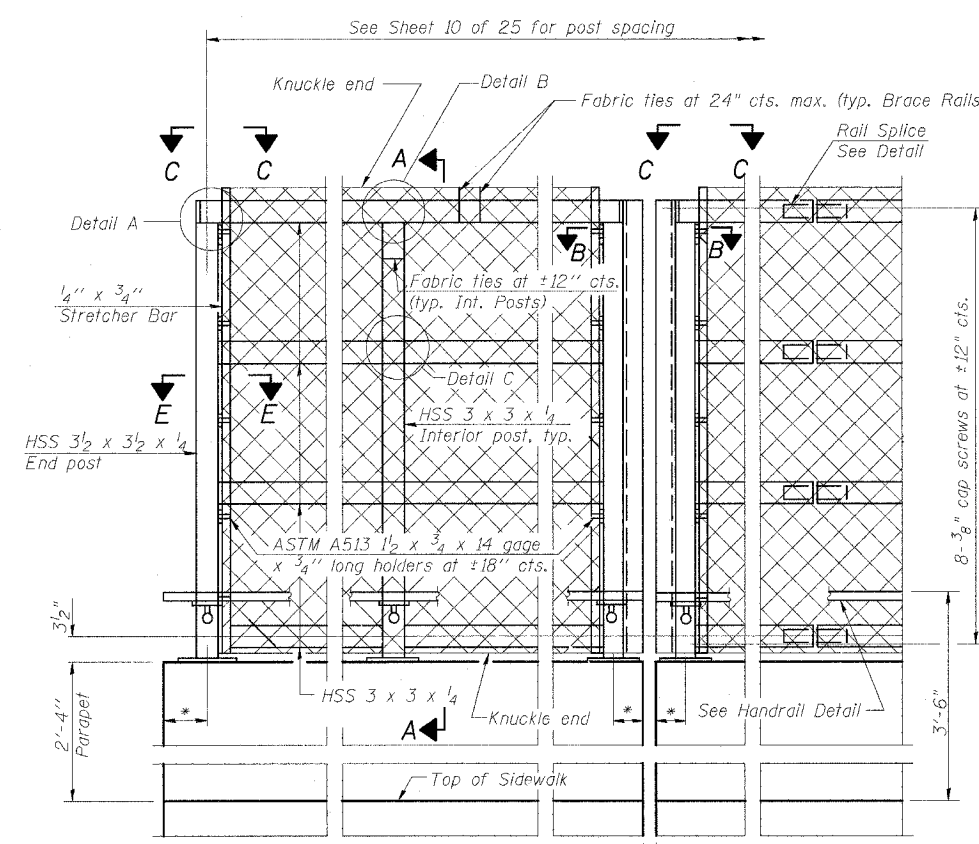
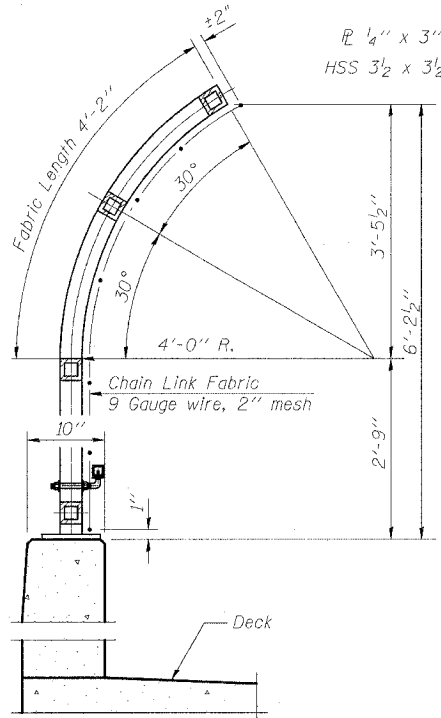


F.A.I. RTE.	SECTION	COUNTY	TOTAL SHEETS	SHEET NO.
57/64	(41-3)HBK	JEFFERSON	518	283
STA.	TO STA.			
FED. ROAD DIST. NO.	ILLINOIS FED. AID PROJECT			
CONTRACT NO. 98963				

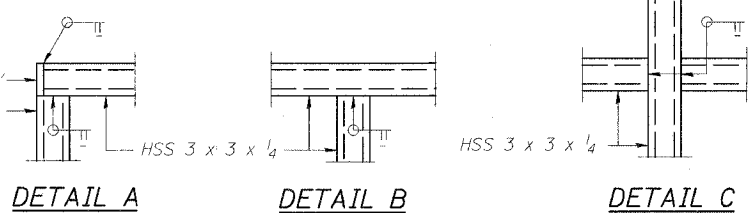
Sheet 13 of 25



ELEVATION
(Inside Face)
* at 50° F

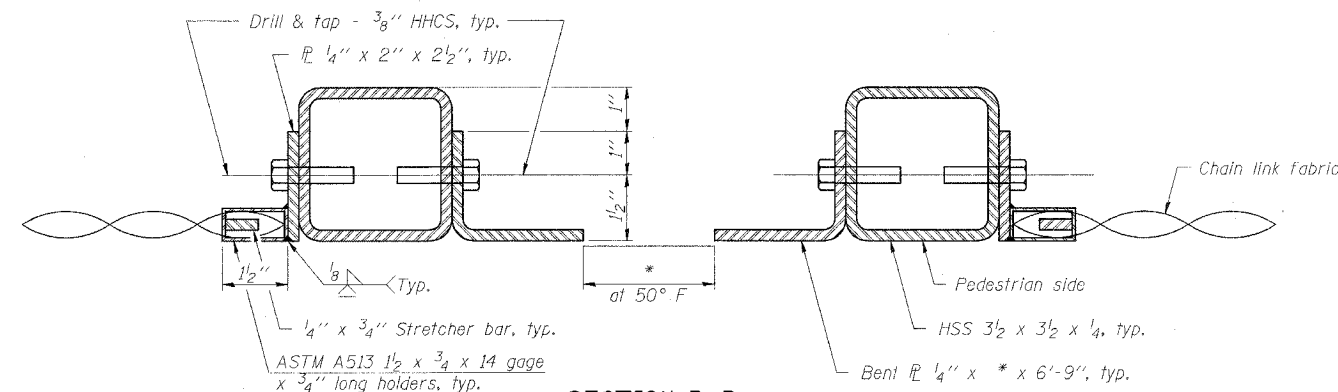


SECTION A-A

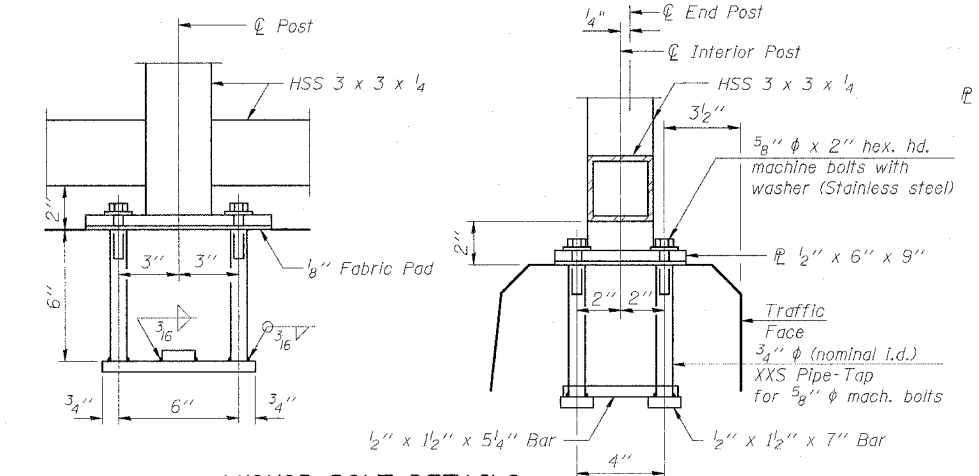


DETAIL A DETAIL B DETAIL C

NOTE
All steel rail elements shall be galvanized according to Article 509.05 of the Standard Specifications.

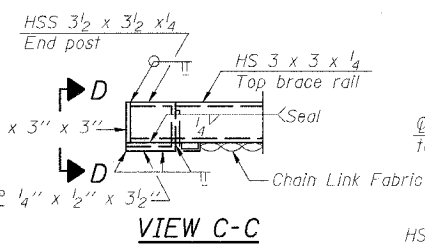


SECTION B-B
(At Expansion Joint)

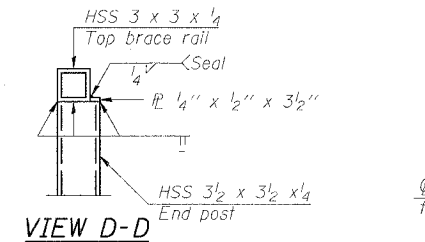


ANCHOR BOLT DETAILS

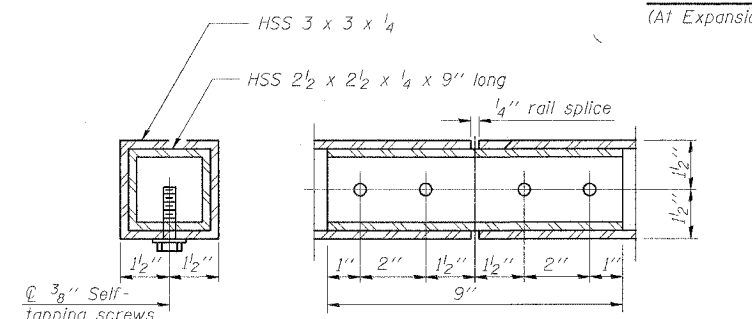
In lieu of the cast-in-place anchor device shown, the Contractor has the option of drilling and setting 5/8\"/>



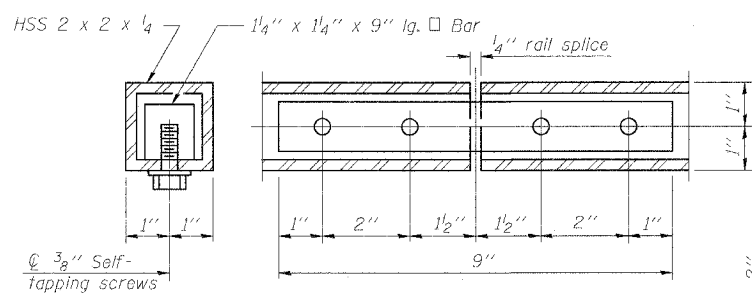
VIEW C-C



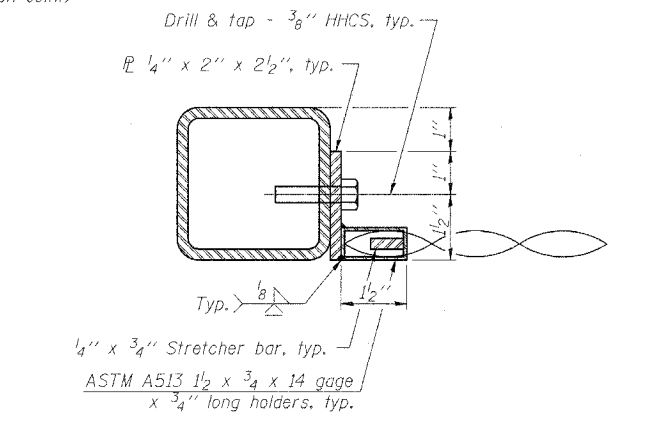
VIEW D-D



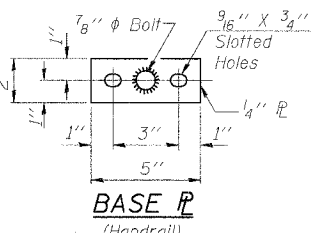
RAIL SPLICE



HANDRAIL SPLICE



SECTION E-E



BASE P
(Handrail)

BILL OF MATERIAL

Item	Unit	Quantity
Bridge Fence Railing	Foot	260

BRIDGE FENCE RAILING PARAPET MOUNTED VETERANS MEMORIAL DR. over F.A.I. ROUTES 57/64 SECTION (41-3)HBK JEFFERSON COUNTY STATION 49+72.27 STRUCTURE NO. 041-0108

© Copyright Hanson Professional Services Inc. 2007

HANSON

JOB NO. 98S2019A
DATE 03-14-07

March 2007 Submittal
LAYOUT: MM 02/12/07
DRAWN: DAB 02/12/07
REVIEWED: / / /
LAYOUT: GBR 02/02/04
DRAWN: Rof 02/02/04
REVIEWED: TEH 02/02/04

R-32

11-1-06

*Variable - See Plans
(10'-0" Maximum Post Spacing)