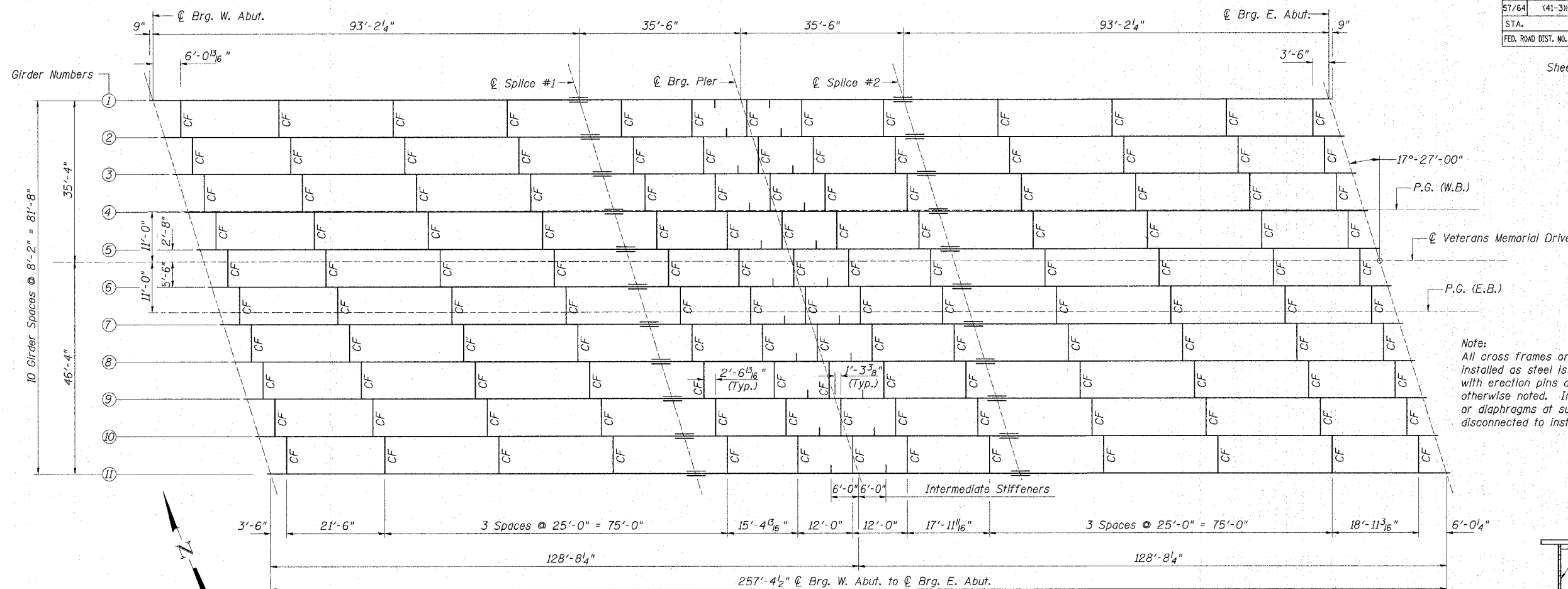
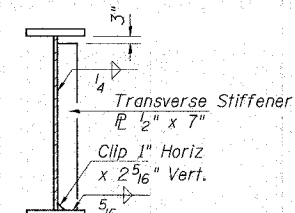


F.A.I. RTE.	SECTION	COUNTY	TOTAL SHEETS	SHEET NO.
57/64	(41-3)HBK	JEFFERSON	578	284
STA.	TO STA.			
FED. ROAD DIST. NO.	ILLINOIS FED. AID PROJECT			

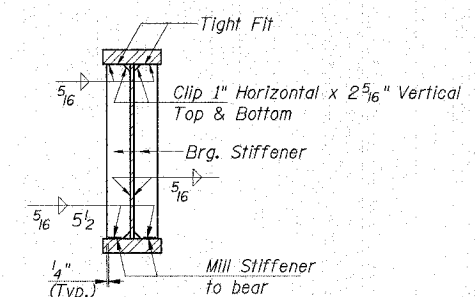
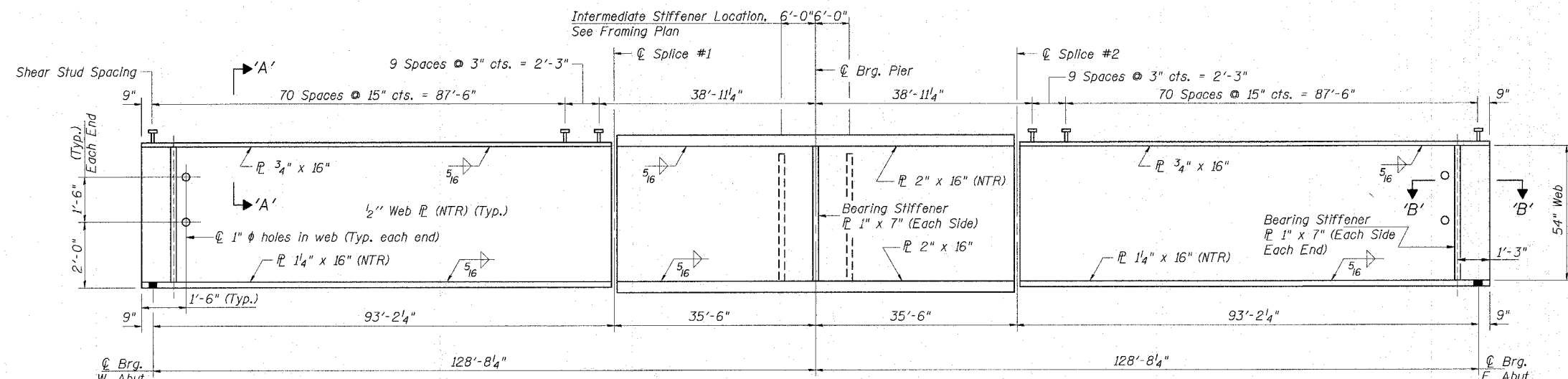
CONTRACT NO. 98963  
Sheet 16 of 25



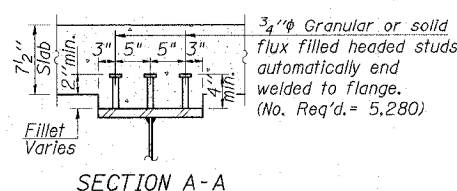
Note:  
All cross frames or diaphragms shall be installed as steel is erected and secured with erection pins and bolts except as otherwise noted. Individual cross frames or diaphragms at supports may be temporarily disconnected to install bearing anchor rods.



INTERMEDIATE STIFFENER DETAIL

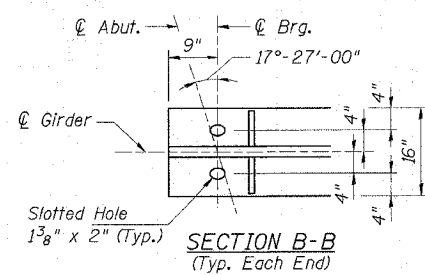


BEARING STIFFENER DETAIL



SECTION A-A

**GIRDER ELEVATION**  
All plates of the girders, including bearing stiffeners and transverse stiffeners, shall be AASHTO M270 Grade 50.  
For cross frame details and splice plate details see sheet 17 of 25.  
Load carrying components designated "NTR" shall conform to the Supplemental Requirements for Notch Toughness, Zone 2.



SECTION B-B (Typ. Each End)

STRUCTURAL STEEL  
VETERANS MEMORIAL DR. over F.A.I. ROUTES 57/64  
SECTION (41-3)HBK  
JEFFERSON COUNTY  
STATION 49+72.27  
STRUCTURE NO. 041-0108

© Copyright Hanson Professional Services Inc. 2007



JOB NO. 98S2019A  
DATE 03-14-07

March 2007 Submittal	MAN	03/12/07
LAYOUT	DAB	03/12/07
DRWN		7
REVISED		
08/02/07, 05/03/08		
FILED		
02/02/04		
02/02/04		
02/02/04		