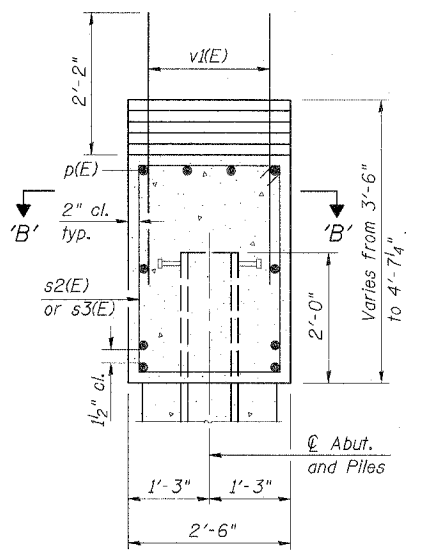
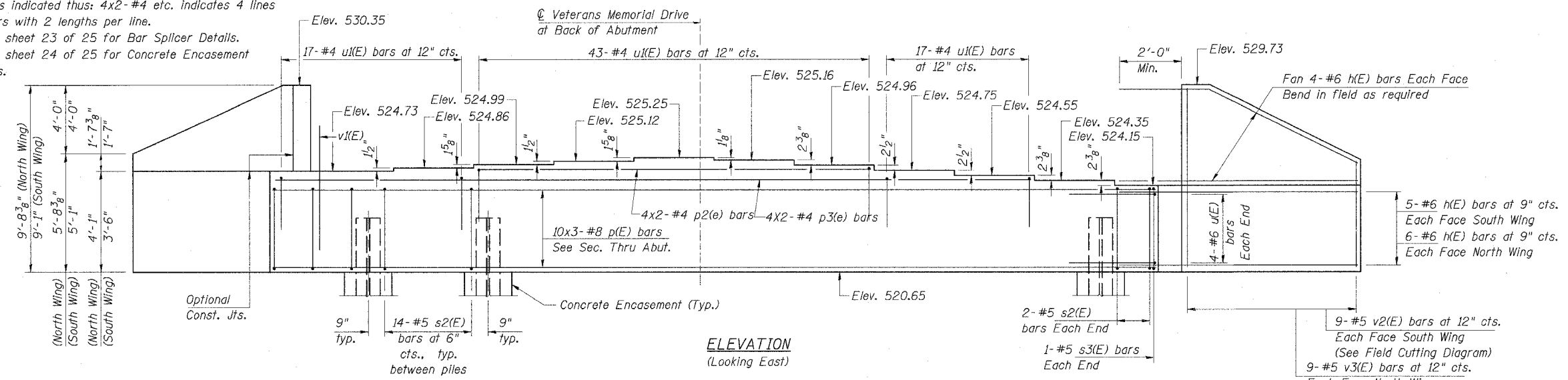


F.A.I. RTE.	SECTION	COUNTY	TOTAL SHEETS	SHEET NO.
57/64	(41-3)HBK	JEFFERSON	518	230
STA.	TO STA.			
FED. ROAD DIST. NO.	ILLINOIS	FED. AID PROJECT		
CONTRACT NO. 98963				

Sheet 20 of 25

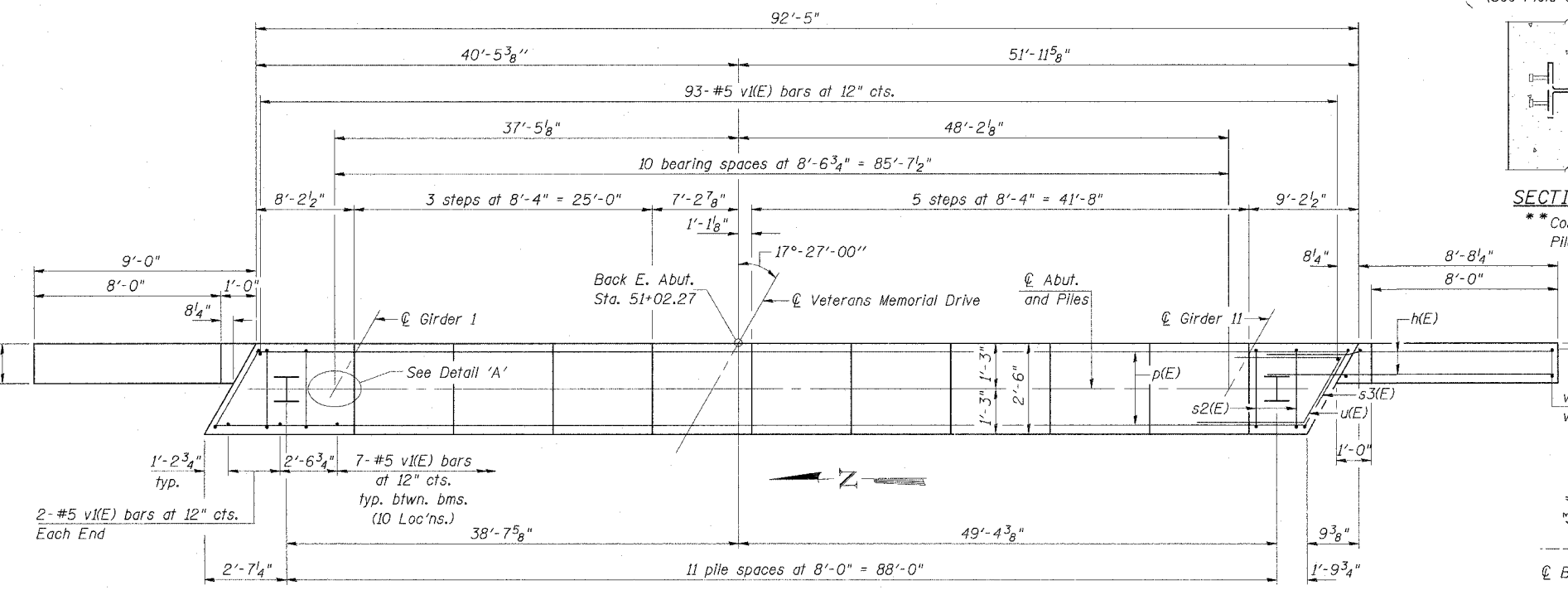
Notes:
 Four steps monolithically with cap.
 Space reinforcement in cap to miss anchor bolts.
 Bars indicated thus: 4x2-#4 etc. indicates 4 lines of bars with 2 lengths per line.
 See sheet 23 of 25 for Bar Splicer Details.
 See sheet 24 of 25 for Concrete Encasement Details.



SECTION THRU ABUTMENT
 (Dimensions at Rt. L's)

BILL OF MATERIAL

Bar	No.	Size	Length	Shape
h(E)	38	#6	12'-0"	
p(E)	30	#8	34'-1"	
p2(E)	8	#4	21'-9"	
p3(E)	8	#4	10'-0"	
s2(E)	158	#5	11'-7"	□
s3(E)	2	#5	11'-9"	□
u(E)	8	#6	11'-2"	┌
u(E)	77	#4	6'-6"	┌
v1(E)	167	#5	4'-4"	
v2(E)	9	#5	13'-5"	
v3(E)	9	#5	14'-10"	
Concrete Structures		Cu. Yd.	38.2	
Reinforcement Bars, Epoxy Coated		Pound	7010	
Structure Excavation		Cu. Yd.	234	
Furnishing Steel Piles HP12x84		Ft.	495	
Driving Piles		Ft.	495	
Test Pile Steel HP12x84		Each	1	
Pile Shoes		Each	12	
Concrete Encasement		Cu. Yd.	4.2	

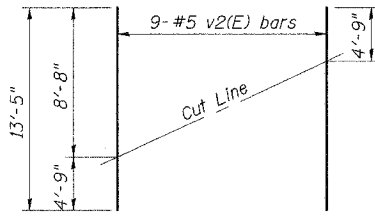


PLAN

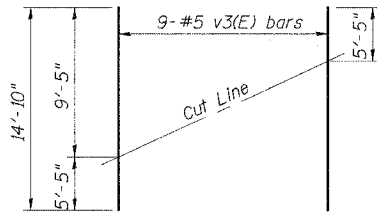
PILE DATA

Type: Steel - HP12x84 (w/ Pile Shoes)
 Nominal Required Bearing : 664 kips
 Allowable Resistance Factor: 161 kips
 Est. Length: 45 ft.
 No. of Production Piles: 11
 No of Test Piles: 1

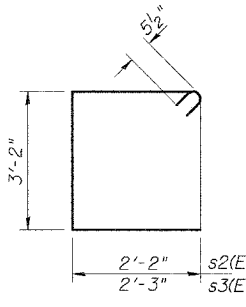
Piles shall be driven through 18 in. diameter precored holes extending to natural ground according to Article 512.09(c) of the Standard Specifications.
 Cost included in driving piles.



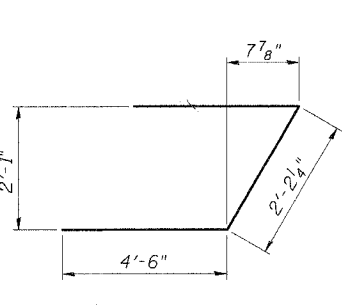
FIELD CUTTING DIAGRAM SOUTH WING



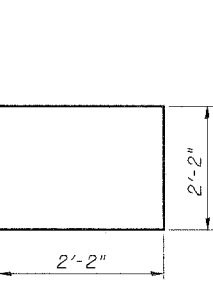
FIELD CUTTING DIAGRAM NORTH WING



BARS s2(E) & s3(E)



BAR u(E)



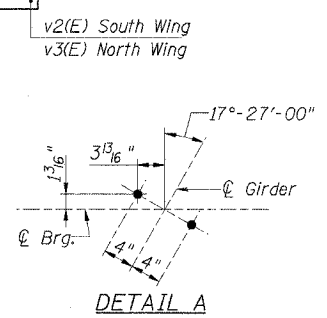
BAR u1(E)

SECTION B-B

** Cost Included with "Furnishing Steel Piles HP 12x84".

MIN. BAR LAPS

#4 bar - 1'-11"
 #8 bar - 5'-1"



DETAIL A

EAST ABUTMENT
 VETERANS MEMORIAL DR. over F.A.I. ROUTES 57/64
 SECTION (41-3)HBK
 JEFFERSON COUNTY
 STATION 49+72.27
 STRUCTURE NO. 041-0108

© Copyright Hanson Professional Services Inc. 2007



98S2019A
 03-14-07

March 2007 Submitted
 03/21/2007 10:50 AM
 1/58 100% 03/21/2007
 LAYOUT MMW 03/21/07
 DRAWN DAB 03/21/07
 REVISED 7/7
 GBR 02/02/04
 DAP 02/02/04
 REVISED 02/02/04