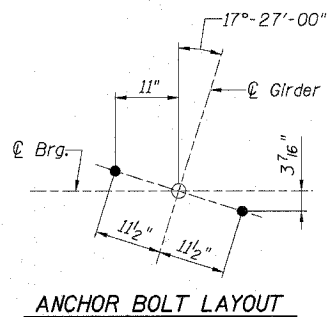
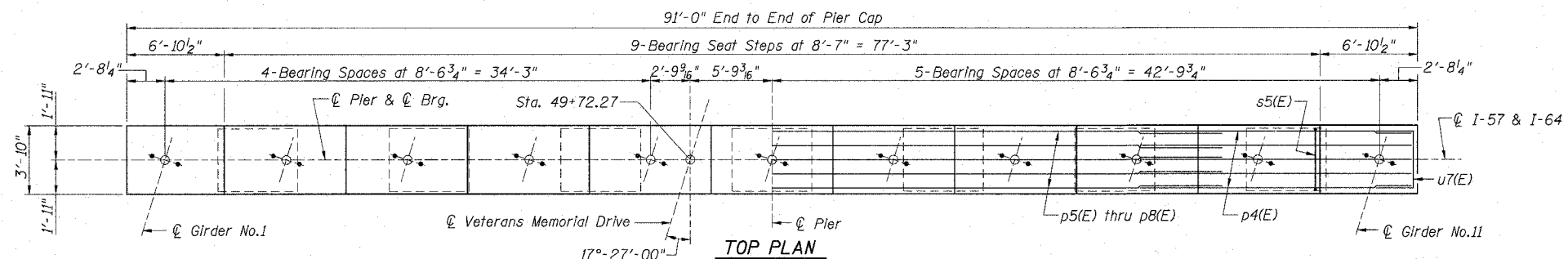


F.A.I. R.T.E.	SECTION	COUNTY	TOTAL SHEETS	SHEET NO.
57/64	(41-3)HBK	JEFFERSON	318	241
STA.	TO STA.			
FED. ROAD DIST. NO.	ILLINOIS	FED. AID PROJECT		
CONTRACT NO. 98963				

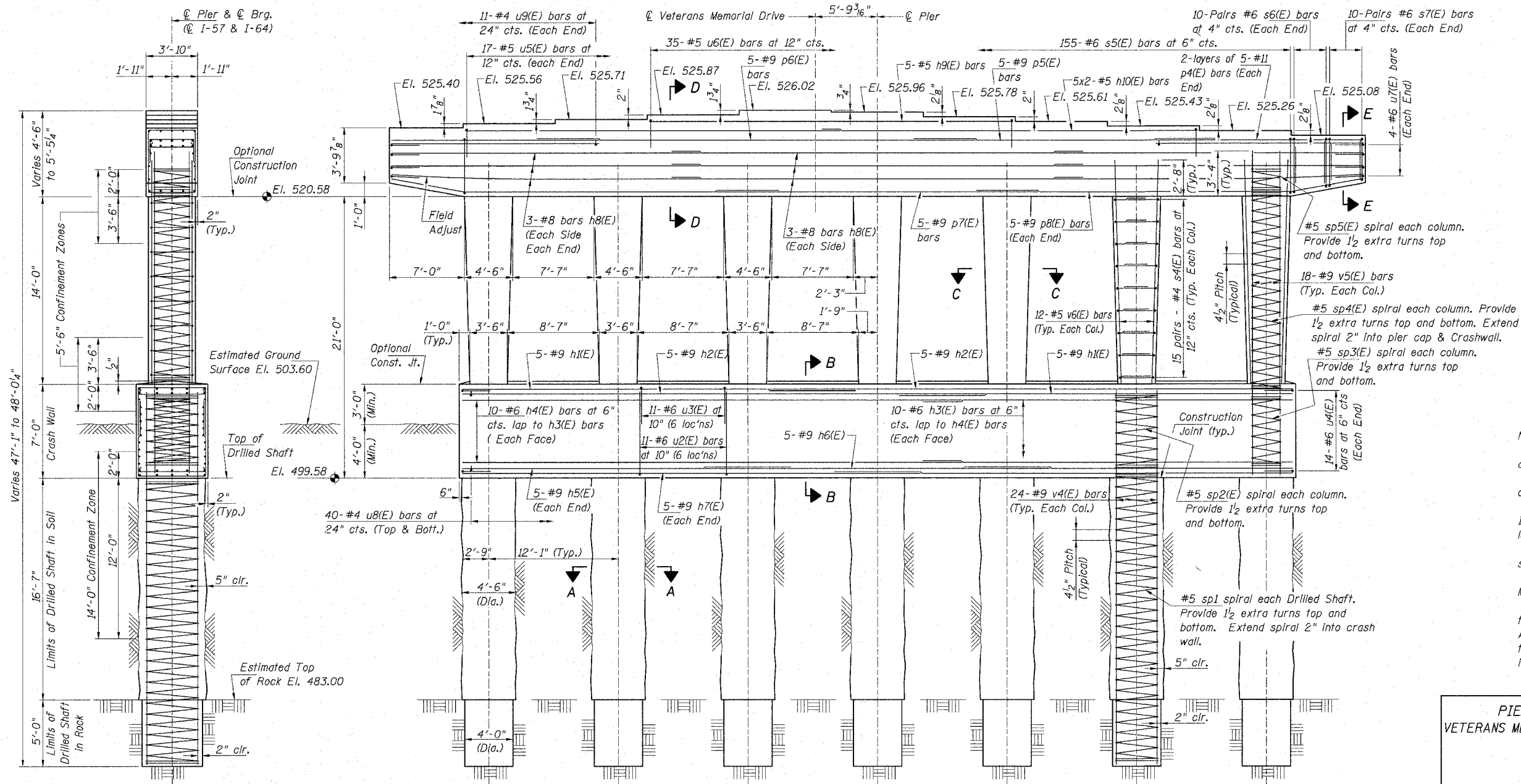
Sheet 21 of 25



ANCHOR BOLT LAYOUT



TOP PLAN



END VIEW

ELEVATION
(Looking Upstation)

MIN. BAR LAPS

- #4 - 1'-8"
- #5 - 2'-2"
- #6 - 2'-7"
- #8 - 4'-6"
- #9 - 8'-1"

Note:
Space cap reinforcement to miss anchor bolts.
Cast steps monolithically with cap.
Bars indicated thus, 5x2 #5 etc. Indicates 5 lines of bars with 2 lengths per line.
Provide each spiral with 4-#4 spacers or equivalent.
See Sheet 22 of 25 for Pier Bill of Material, Sections and Details.
Shop weld together extra 1/2 spiral turns at top and bottom of spiral per AWS D1.4 or provide 1/2 extra turns top and bottom with 135° standard hook into core at ends of spiral.

The quantities and reinforcement detailing are based on the top of shaft and estimated rock elevations shown and may change based on the actual top of rock elevation encountered at each shaft and the final top of shaft elevation.

PIER DETAILS (Sheet 1 of 2)
VETERANS MEMORIAL DR. over F.A.I. ROUTES 57/64
SECTION (41-3)HBK
JEFFERSON COUNTY
STATION 49+72.27
STRUCTURE NO. 041-0108

© Copyright Hanson Professional Services Inc. 2007



JES:HL
98S2019A
03-14-07

March 2007 Submittal	LAYOUT	DATE	BY
	DESIGN	03/12/07	MS
	DRAWN	03/12/07	MS
	REVIEWED	7/7	7/7
	DATE	02/22/04	
	BY	10/22/04	
	REVIEWED	10/22/04	