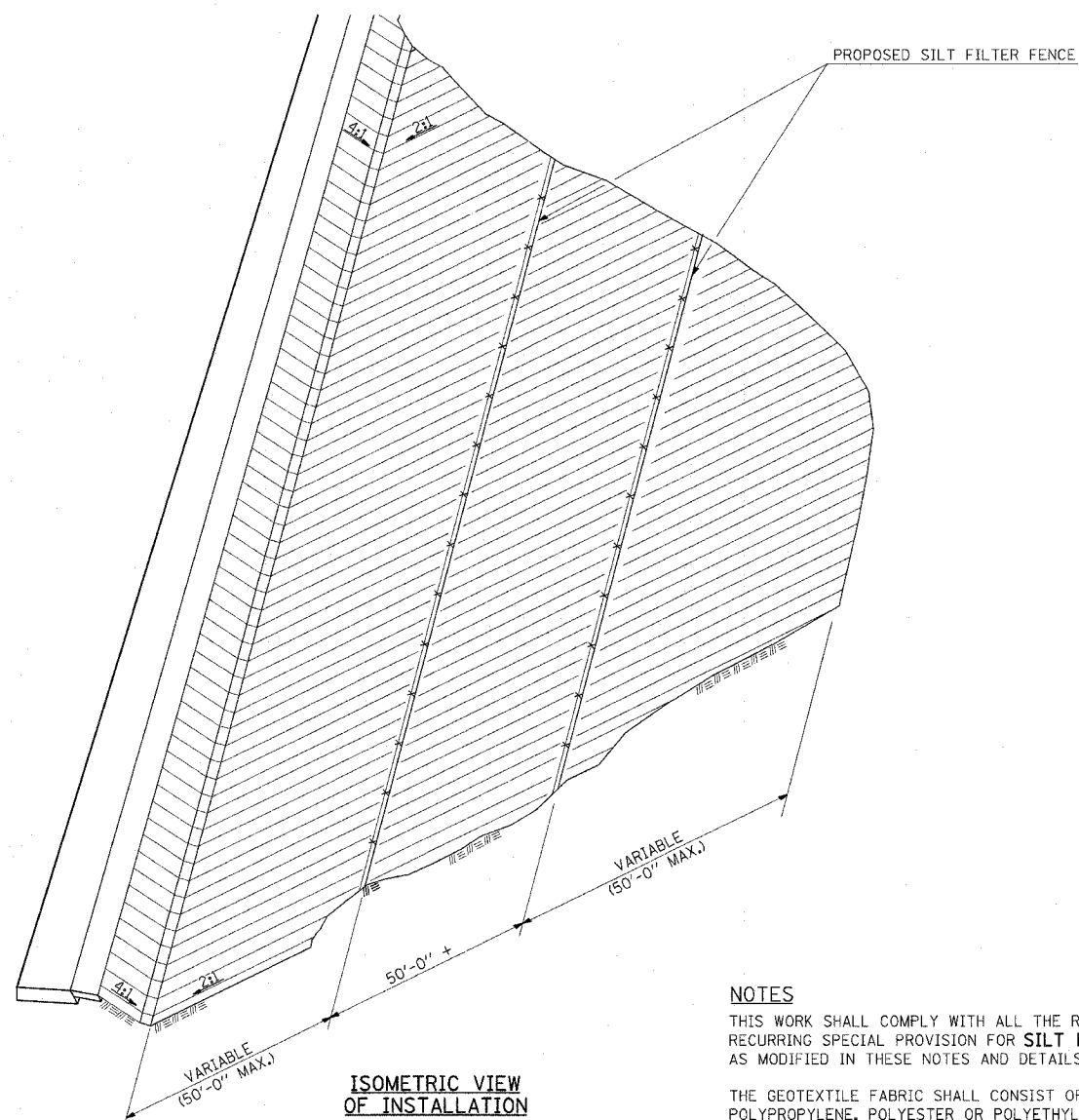


F.A. RTE.	SECTION	COUNTY	TOTAL SHEETS	SHEET NO.
57/64	(41-3)HBK	JEFFERSON	518	299
STA.		TO STA.		
FED. ROAD DIST. NO.		ILLINOIS FED. AID PROJECT		

### DETAIL OF SILT FILTER FENCE



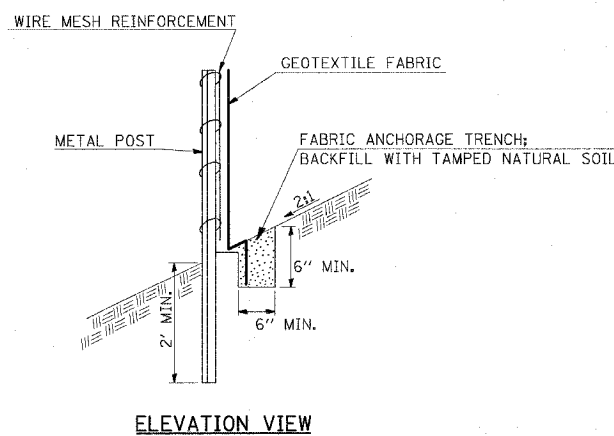
**NOTES**  
 THIS WORK SHALL COMPLY WITH ALL THE REQUIREMENTS OF THE RECURRING SPECIAL PROVISION FOR SILT FILTER FENCE, EXCEPT AS MODIFIED IN THESE NOTES AND DETAILS.

THE GEOTEXTILE FABRIC SHALL CONSIST OF WOVEN FILAMENTS OF POLYPROPYLENE, POLYESTER OR POLYETHYLENE. NEEDLE PUNCHED, HEAT-BONDED OR RESIN BONDED FABRIC WILL NOT BE PERMITTED.

THE WIRE MESH REINFORCEMENT SHALL BE A MINIMUM OF 36" IN HEIGHT, HAVE A MINIMUM WIRE SIZE OF .14 GAGE AND A MAXIMUM WIRE SPACING OF SIX INCHES. WOVEN WIRE FENCING MAY BE USED PROVIDED IT MEETS THESE REQUIREMENTS.

THE WIRE MESH REINFORCEMENT SHALL BE ATTACHED TO THE STEEL POST WITH TIE WIRES. THE GEOTEXTILE FABRIC SHALL BE ATTACHED TO THE WIRE MESH REINFORCEMENT WITH HOG RINGS. THE STEEL POSTS SHALL BE A MINIMUM OF 6' LONG AND SHALL BE PLACED ON 10' CENTERS.

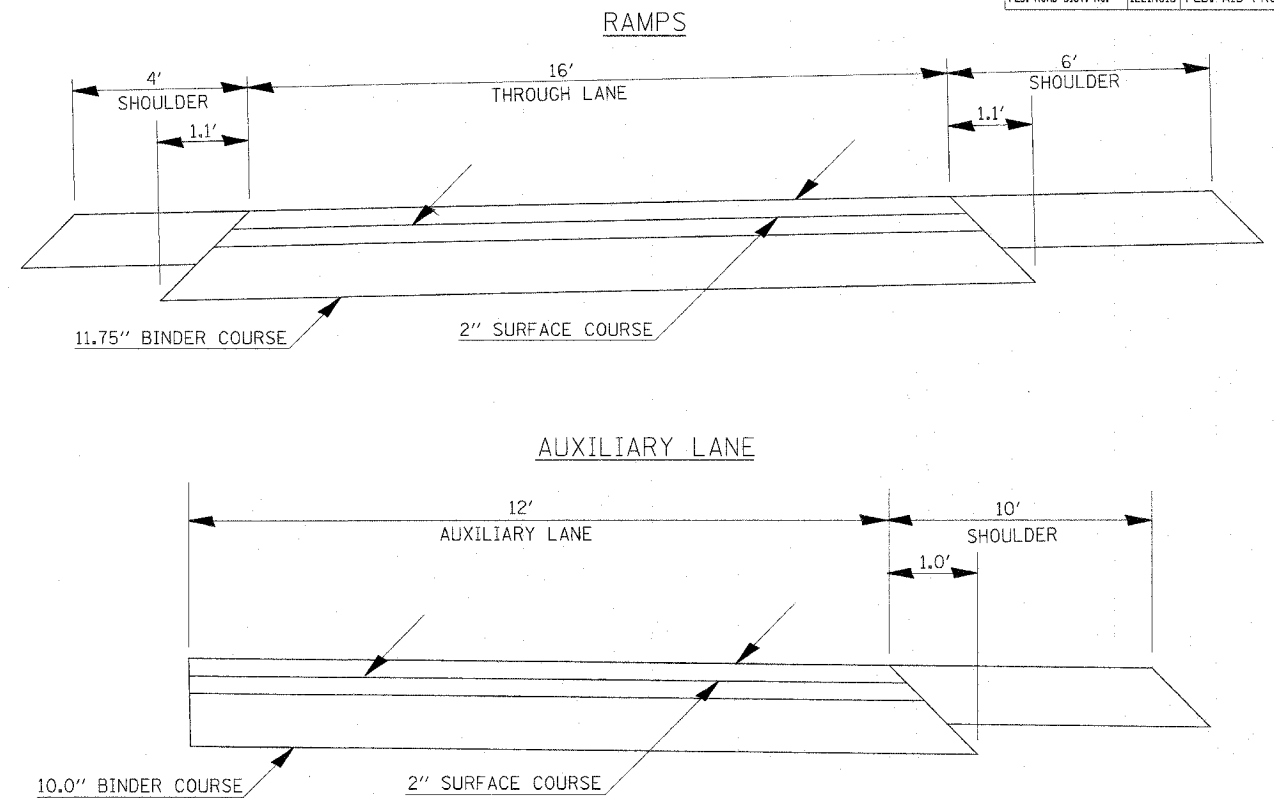
THIS WORK SHALL BE PAID FOR AT THE CONTRACT UNIT PRICE PER FOOT FOR PERIMETER EROSION BARRIER AND FENCE, AS MEASURED (EROSION CONTROL) IN PLACE. THE UNIT PRICE SHALL INCLUDE THE COST OF ALL MATERIAL, EQUIPMENT AND LABOR TO CONSTRUCT THE FENCE AS DESCRIBED.



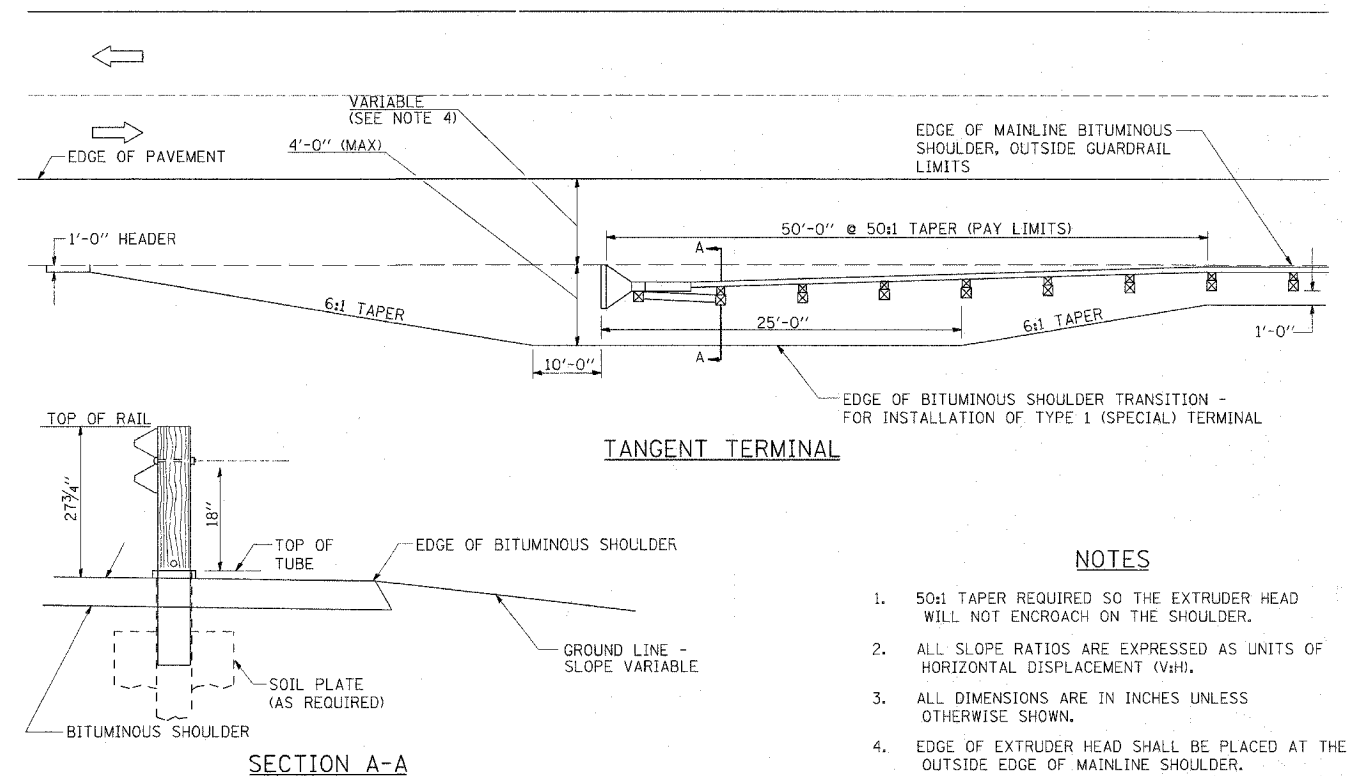
REVISIONS	DATE	BY	REVISIONS
REDESIGNED	2-15-89	REVISOR	
REVISED	8-18-94	REVISOR	
REVISED	10-3-94	REVISOR	
REVISED	12-17-01	REVISOR	

STD. 9-40

### EDGE OF BINDER COURSE



### DETAIL - BITUMINOUS SHOULDER AT GUARDRAIL TERMINAL



- NOTES**
- 50:1 TAPER REQUIRED SO THE EXTRUDER HEAD WILL NOT ENCRUCH ON THE SHOULDER.
  - ALL SLOPE RATIOS ARE EXPRESSED AS UNITS OF HORIZONTAL DISPLACEMENT (V:H).
  - ALL DIMENSIONS ARE IN INCHES UNLESS OTHERWISE SHOWN.
  - EDGE OF EXTRUDER HEAD SHALL BE PLACED AT THE OUTSIDE EDGE OF MAINLINE SHOULDER.