

GENERAL NOTES:

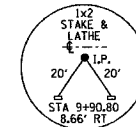
THIS SECTION SHALL BE CONSTRUCTED IN ACCORDANCE WITH THE PLANS, SPECIAL PROVISIONS AND "STANDARD SPECIFICATIONS FOR ROAD AND BRIDGE CONSTRUCTION", ADOPTED JANUARY 1, 2007.

THE WORK INVOLVED ON THIS SECTION CONSISTS OF THE REMOVAL OF THE EXISTING STRUCTURE, THE CONSTRUCTION OF A 70 FOOT LONG SINGLE SPAN PRECAST, PRESTRESSED CONCRETE DECK BEAM BRIDGE, EARTH APPROACHES, AGGREGATE SURFACE COURSE AND OTHER MISCELLANEOUS ITEMS NECESSARY TO COMPLETE THIS SECTION.

ALL ELEVATIONS ARE BASED ON U.S.G.S. MEAN SEA LEVEL DATUM.

IT SHALL BE THE CONTRACTOR'S RESPONSIBILITY TO CONTACT ALL THE UTILITIES, AFFECTING THE PROJECT, PRIOR TO CONSTRUCTION.

NOTE: CONSTRUCTION TRANSITIONS
STA. 2+00 TO STA 2+50
STA 8+00 TO STA 8+50
ALL QUANTITIES ARE INCLUDED IN THE PROPOSAL



T.R.	SECTION	COUNTY	TOTAL SHEETS	SHEET NO.
239A	04-08125-00-BR	HAMILTON	12	2
FED. ROAD DIST. NO. 9		ILLINOIS	LAKEY CREEK	
PROJECT # BROS-065381		CONTRACT # 99288		

323 W. 3RD ST.
P.O. BOX 160
MT. CARMEL, IL
62863
PHONE:
(618)-262-8651
FAX:
(618)-263-3327

405 W. STATE ST
SUITE 1
PRINCETON, IN
47670
PHONE:
(612)-386-7611
FAX:
(612)-386-2812



PROFESSIONAL DESIGN FIRM
LAND SURVEY & PROFESSIONAL ENGINEERING CORPORATION
184-000887
(62-032435)(35-002769)



AARON M. MEFFORD
NAME
SIGNATURE
DATE
3-28-07
11-30-07
EXPIRES

MCLEANSBORO TOWNSHIP
OVER LAKEY CREEK
HAMILTON COUNTY, ILLINOIS

SHEET TITLE:

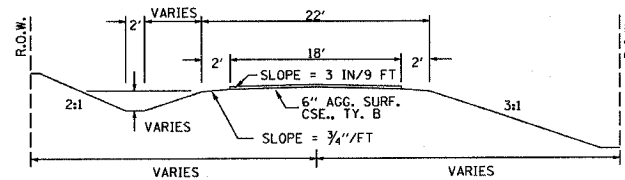
PLAN & PROFILE

SCALE:	VARIES
BY:	AMM
DATE:	3/28/07
REV:	

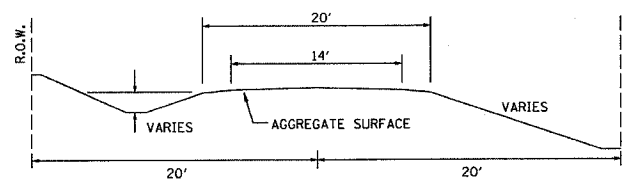
2 OF 12 SHEETS

SHEET NO. 2

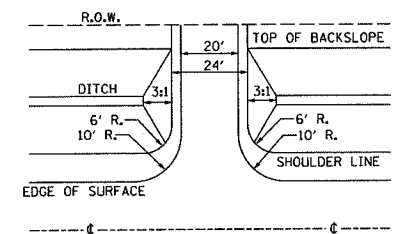
TYPICAL CROSS SECTION PROPOSED



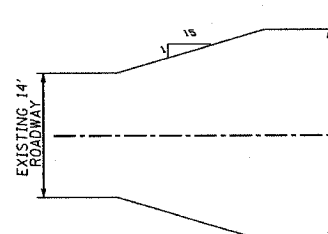
TYPICAL CROSS SECTION EXISTING



STA 4+46 FIELD ENTRANCE DETAIL



TAPER DETAIL



NOTE: CONSTRUCT SPECIAL DITCH

- STA 2+50 TO STA 4+69 LT
- STA 2+08 TO STA 4+69 RT
- STA 5+27 TO STA 7+50 LT
- STA 5+29 TO STA 6+50 RT

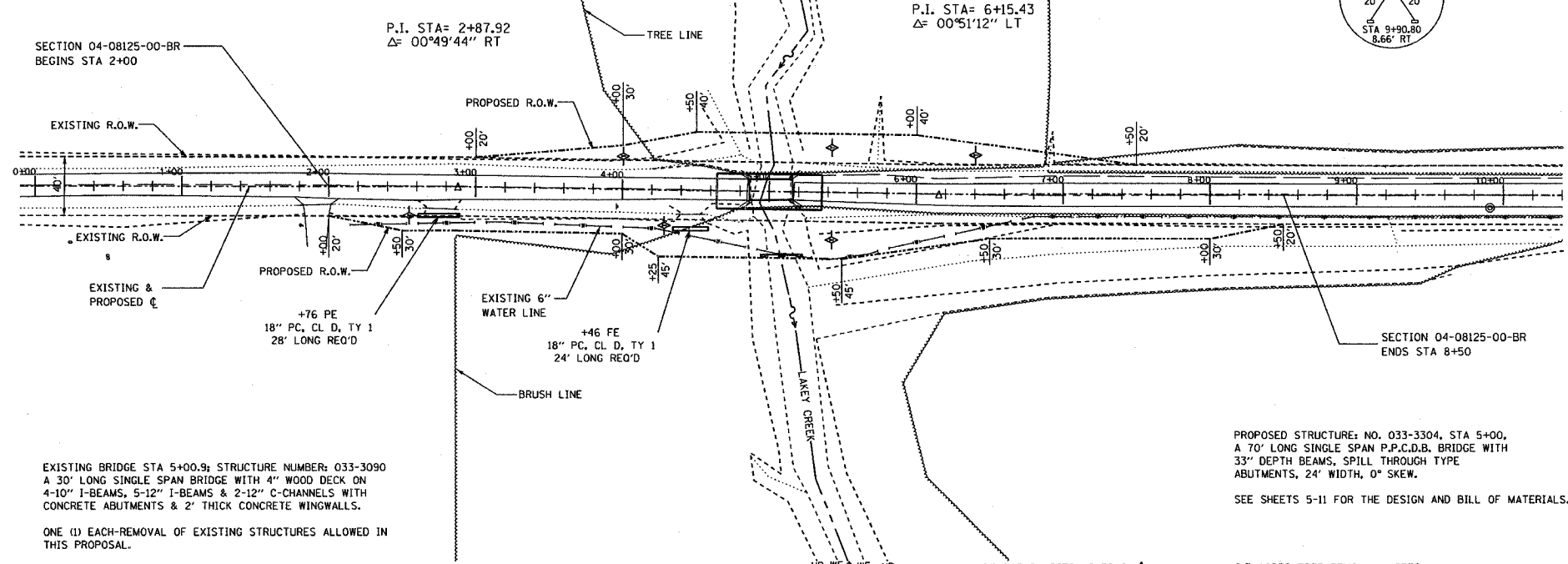
UTILITIES:
J.U.L.I.E. 1-800-892-0123

REND LAKE CONSERVATORY DISTRICT
1-618-439-4321

NOTE: CONSTRUCT STONE RIPRAP DITCH

- STA 4+58 TO STA 4+69 RT (0.48 TON/LIN FT)
- 6 TON STONE RIPRAP DITCH ALLOWED IN PROPOSAL.

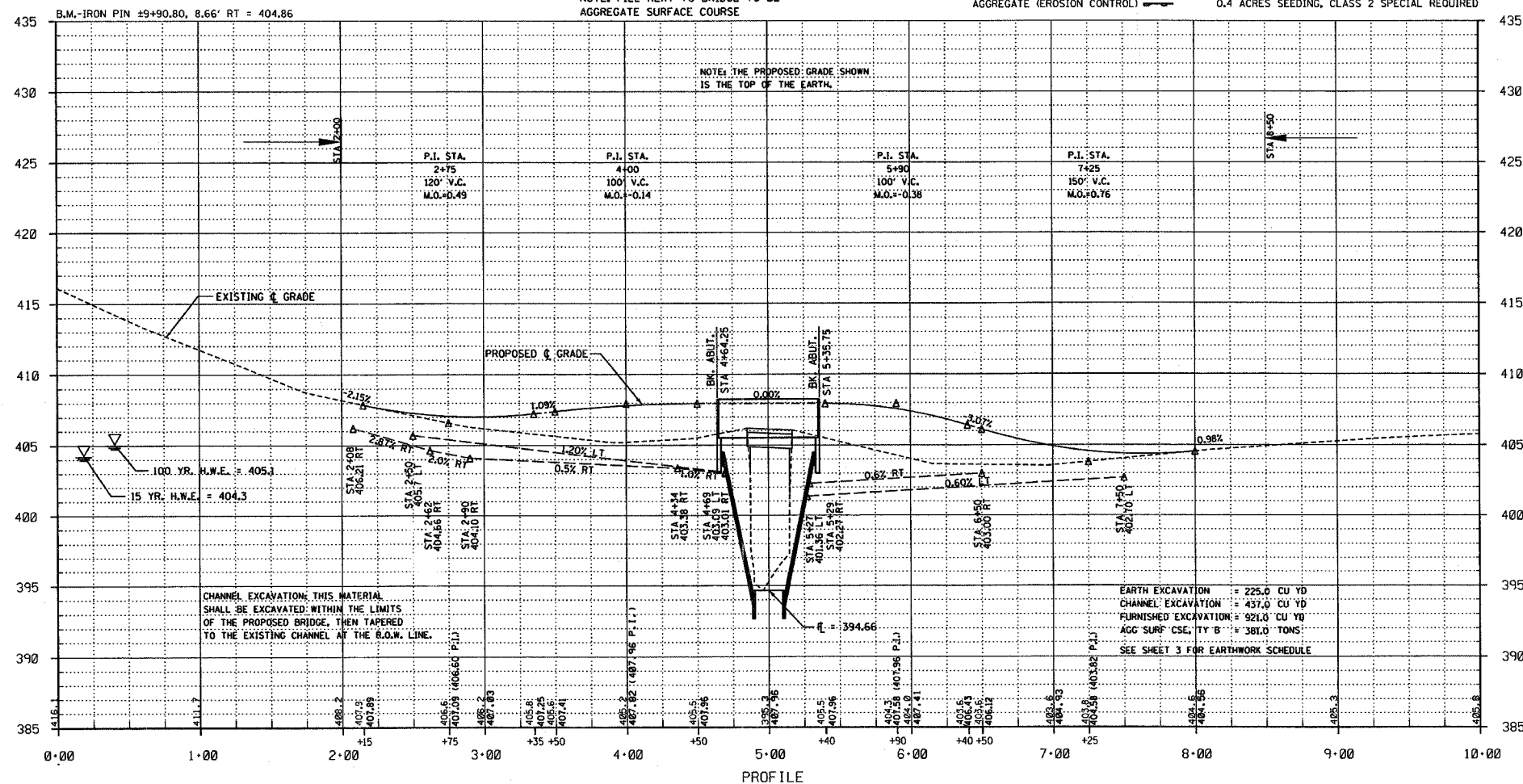
SEE SHEET NO. 12 FOR STONE RIPRAP DITCH DETAIL.



EXISTING BRIDGE STA 5+00.9; STRUCTURE NUMBER: 033-3090
A 30' LONG SINGLE SPAN BRIDGE WITH 4" WOOD DECK ON
4-10" I-BEAMS, 5-12" I-BEAMS & 2-12" C-CHANNELS WITH
CONCRETE ABUTMENTS & 2' THICK CONCRETE WINGWALLS.

ONE (1) EACH-REMOVAL OF EXISTING STRUCTURES ALLOWED IN
THIS PROPOSAL.

NOTE: FILL NEXT TO BRIDGE TO BE AGGREGATE SURFACE COURSE
TEMPORARY DITCH CHECKS
0.3 ACRES TREE REMOVAL, ACRES
0.4 ACRES SEEDING, CLASS 2 SPECIAL REQUIRED



CHANNEL EXCAVATION; THIS MATERIAL
SHALL BE EXCAVATED WITHIN THE LIMITS
OF THE PROPOSED BRIDGE, THEN TAPERED
TO THE EXISTING CHANNEL AT THE R.O.W. LINE.

EARTH EXCAVATION = 225.0 CU YD
CHANNEL EXCAVATION = 437.0 CU YD
FURNISHED EXCAVATION = 921.0 CU YD
AGG SURF CSE, TY B = 381.0 TONS
SEE SHEET 3 FOR EARTHWORK SCHEDULE