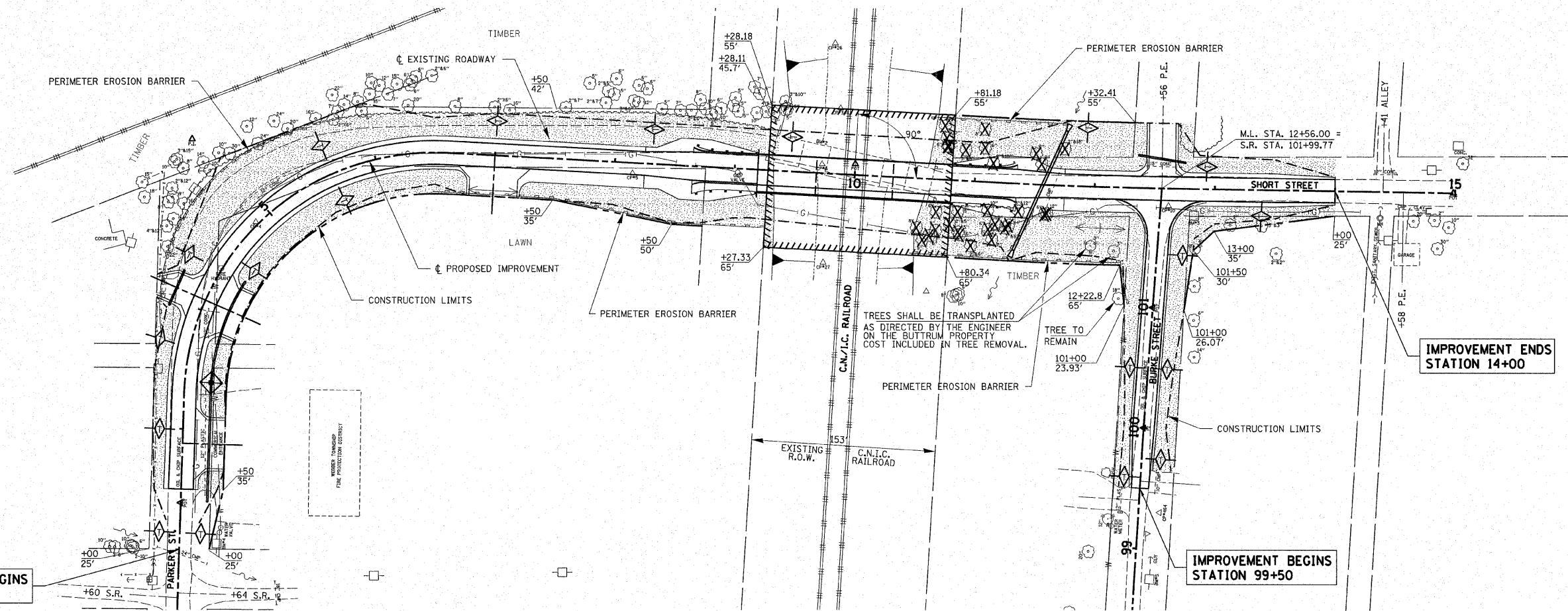
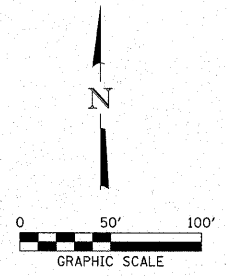


ROUTE NO.	SECTION	COUNTY	TOTAL SHEETS	SHEET NO.
M.S. 2700	05-00186-00-BR 06-00001-00-BR	JEFFERSON BLUFORD	31	5
FED. ROAD DIST. NO.		ILLINOIS CONTRACT NO. 99297		

EROSION CONTROL PLAN & STORMWATER POLLUTION PREVENTION PLAN

THIS PROJECT DISTURBS 1.6 ACRES OF TOTAL LAND AREA. COMPLIANCE WITH THE NATIONAL POLLUTION DISCHARGE ELIMINATION SYSTEM (NPDES) STORMWATER PERMIT IS ONLY NECESSARY IF A PROJECT DISTURBS 1 OR MORE ACRES OF TOTAL LAND AREA; AN NPDES STORMWATER PERMIT WILL BE REQUIRED FOR THIS PROJECT.



GENERAL NOTES FOR SOIL EROSION CONTROL

1. SOIL EROSION AND SEDIMENT CONTROL FEATURES SHALL BE CONSTRUCTED PRIOR TO THE COMMENCEMENT OF UPLAND DISTURBANCE. SOIL DISTURBANCE SHALL BE CONDUCTED IN SUCH A MANNER TO MINIMIZE EROSION. SOIL STABILIZATION MEASURES SHALL CONSIDER THE TIME OF YEAR, SITE CONDITIONS AND THE USE OF TEMPORARY OR PERMANENT MEASURES.
2. THE EROSION CONTROL MEASURES INDICATED ON THE PLANS ARE THE MINIMUM REQUIREMENTS. THE CONTRACTOR SHALL ALSO TAKE SPECIAL NOTE TO THE CONTRACT SPECIAL PROVISION "EROSION CONTROL PLAN". ADDITIONAL MEASURES MAY BE REQUIRED, AS DIRECTED BY THE ENGINEER. ALL MEASURES SHALL BE IN PLACE WITHIN 4 DAYS OF DISTURBANCE.
3. ALL TEMPORARY EROSION CONTROL MEASURES MUST BE MAINTAINED AND IMMEDIATELY REPLACED AS NEEDED AND AS DIRECTED BY THE ENGINEER. THE CONTRACTOR WILL BE RESPONSIBLE FOR ALL INSPECTION AND REPAIR. THE CONTRACTOR SHALL INSPECT AND COMPLETE MAINTENANCE OF ALL ITEMS A MINIMUM OF EVERY 7 DAYS AND WITHIN 24 HOURS OF A ONE-HALF INCH RAINFALL. ALL TEMPORARY EROSION AND SEDIMENT CONTROL MEASURES SHALL BE REMOVED WITHIN 30 DAYS AFTER FINAL SEEDING IS ACHIEVED.
4. PERIMETER EROSION BARRIER SHALL BE INSTALLED AT LOCATIONS SPECIFIED IN THE PLANS AT 5 FEET OUTSIDE THE TOE OF SLOPE OR INSIDE THE RIGHT-OF-WAY WHICHEVER IS CLOSER TO THE CENTERLINE, OR AS DIRECTED BY THE ENGINEER PRIOR TO THE START OF ANY EARTHWORK, CULVERT, OR STORM SEWER CONSTRUCTION. STAKES SHALL BE PLACED AT A MINIMUM OF 5 FOOT INTERVALS. SEE STD. 280001.
5. THE PERIMETER EROSION BARRIER SHALL BE REMOVED WITHIN 30 DAYS AFTER ALL DISTURBED AREAS HAVE BEEN STABILIZED WITH VEGETATION. AFTER THE PERIMETER EROSION BARRIER IS REMOVED, ALL AREAS DAMAGED BY THE FENCE INSTALLATION SHALL BE RESTORED BY THE CONTRACTOR.
6. THE FENCE INSTALLATION, MAINTENANCE, REMOVAL AND THE RESTORATION OF THE AREA DISTURBED BY THE FENCE INSTALLATION IS INCLUDED IN COST OF THE PAY ITEM PERIMETER EROSION BARRIER.
7. TEMPORARY DITCH CHECKS SHALL BE CONSTRUCTED AS PER CONTRACT SPECIAL PROVISIONS ON 100 FEET CENTERS AS SHOWN HEREON OR AS DIRECTED BY THE ENGINEER. THE DITCH CHECKS SHALL BE INSTALLED IMMEDIATELY AS GRADING PROGRESSES THROUGH THE PROJECT. THE PAY ITEM FOR TEMPORARY DITCH CHECK SHALL INCLUDE THE COST OF INSTALLATION, MAINTENANCE AND REMOVAL. ONLY AGGREGATE DITCH CHECKS SHALL BE USED. SEE STD. 28001.
8. REMOVAL OF TRAPPED SEDIMENT SHALL BE PAID FOR AS EARTH EXCAVATION. SEDIMENT SHALL BE REMOVED WHEN SILTATION REACHES 50% CAPACITY OF STRUCTURE. SEE APPLICABLE STANDARDS, SPECIFICATIONS, AND CONTRACT SPECIAL PROVISIONS.
9. THE CONTRACTOR SHALL CLEAN UP AND GRADE THE WORK AREA AS THE PROJECT PROGRESSES TO ELIMINATE THE CONCENTRATION OF RUNOFF. THE PAVEMENT SHALL BE CLEANED DAILY TO REMOVE EARTH MATERIAL TO THE SATISFACTION OF THE ENGINEER.
10. THE CONTRACTOR SHALL CONTACT THE COUNTY HIGHWAY DEPARTMENT AS SOON AS INITIAL EROSION CONTROL PRACTICES ARE INSTALLED.
11. TEMPORARY SEEDING SHALL BE COMPLETED ACCORDING TO THE ITEM TEMPORARY EROSION CONTROL SEEDING ON ALL AREAS THAT WILL NOT BE BROUGHT TO FINAL GRADE OR ON WHICH CONSTRUCTION WILL BE STOPPED FOR A PERIOD OF MORE THAN 15 WORKING DAYS.
12. THE COST OF ALL REQUIRED TEMPORARY SEEDING SHALL BE PAID FOR AS PER THE ITEM TEMPORARY EROSION CONTROL SEEDING.
13. ALL DISTURBED AREAS SHALL BE SEEDDED AS DIRECTED BY THE ENGINEER. FINAL SEEDING SHALL CONFORM TO SEEDING CLASS 2 (SPECIAL) AS PER IDOT STANDARD SPECIFICATIONS AND CONTRACT SPECIAL PROVISIONS.
14. THE CONTRACTOR SHALL MAINTAIN AND PRESERVE ANY EXISTING SUB SURFACE DRAINAGE SYSTEMS (i.e. FIELD TILES) ACCORDING TO SECTION 611 OF THE IDOT STANDARD SPECIFICATIONS.

SEEDING, CLASS 2 SPECIAL

THE AREA TO BE SEEDDED SHALL CONSIST OF ALL EARTH SURFACES DISTURBED DURING CONSTRUCTION AS DIRECTED BY THE ENGINEER. EST. QUANTITY = 1.3 ACRES

TEMPORARY EROSION CONTROL SEEDING

2 APPLICATIONS 100LB/ACRE EST. QUANTITY = 260 POUNDS

INLET AND PIPE PROTECTION

RT. STA. 3+40 = 1 EACH

TEMPORARY DITCH CHECKS

TOTAL = 19 EACH
FINAL LOCATION TO BE APPROVED BY ENGINEER.

PERIMETER EROSION BARRIER

LT. STA. 3+50 TO 5+50 = 200 FT
RT. STA. 6+50 TO 9+25 = 275 FT
LT. STA. 10+60 TO 11+75 = 115 FT
RT. STA. 10+50 TO 101+00 = 220 FT
TOTAL = 810 FT

LEGEND

- PERIMETER EROSION BARRIER
- TEMPORARY DITCH CHECKS
- INLET AND PIPE PROTECTION
- SEEDING, CLASS 2 SPECIAL

HAMPTON, LENZINI & RENWICK, INC.
CIVIL & STRUCTURAL ENGINEERS
LAND SURVEYORS

3085 STEVENSON DRIVE, SUITE 201
SPRINGFIELD, ILLINOIS 62703
(217) 546-3400

ELGIN • SPRINGFIELD

PROJECT NUMBER: 12-49-0005-1 DATE: 02/06/07
DESIGNED: J.W.F. CHECKED: S.W.M. DRAWN: D.T.M.

EROSION CONTROL PLAN
SECTIONS 05-00186-00-BR / 06-00001-00-BR
VILLAGE OF BLUFORD
JEFFERSON COUNTY