

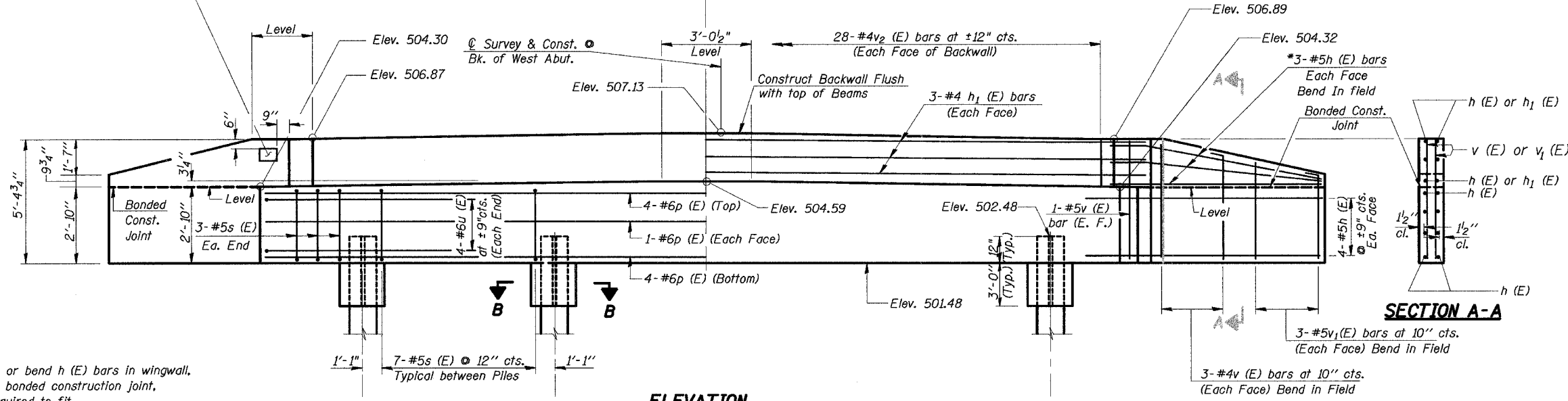
STATE OF ILLINOIS
DEPARTMENT OF TRANSPORTATION

T.R. RTE.	SECTION	COUNTY	TOTAL SHEETS	SHEET NO.
167	04-01225-00-BR	WILLIAMSON	16	8
STA 12+00	STA 18+50			
ROAD DIST.	ILLINOIS			
CONTRACT No. 99299				

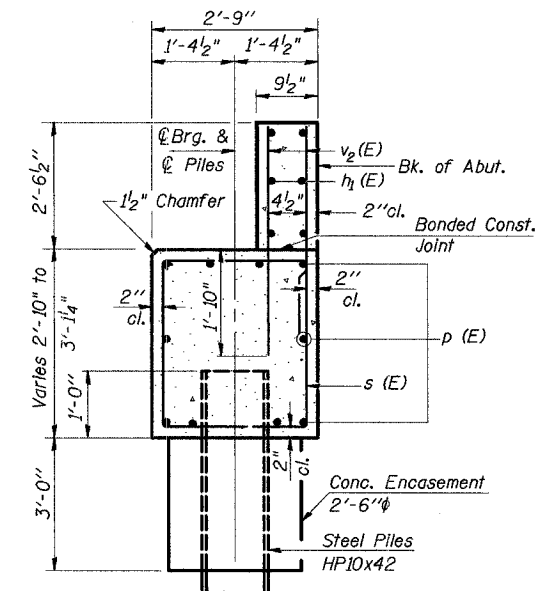
Sheet 5 of 9

Name Plate shall be placed on the outside face of the South Wing.

NOTE: After beams are in place and dowel rods grouted, the backwall and the portions of the wingwall above the bonded construction joint shall be poured.

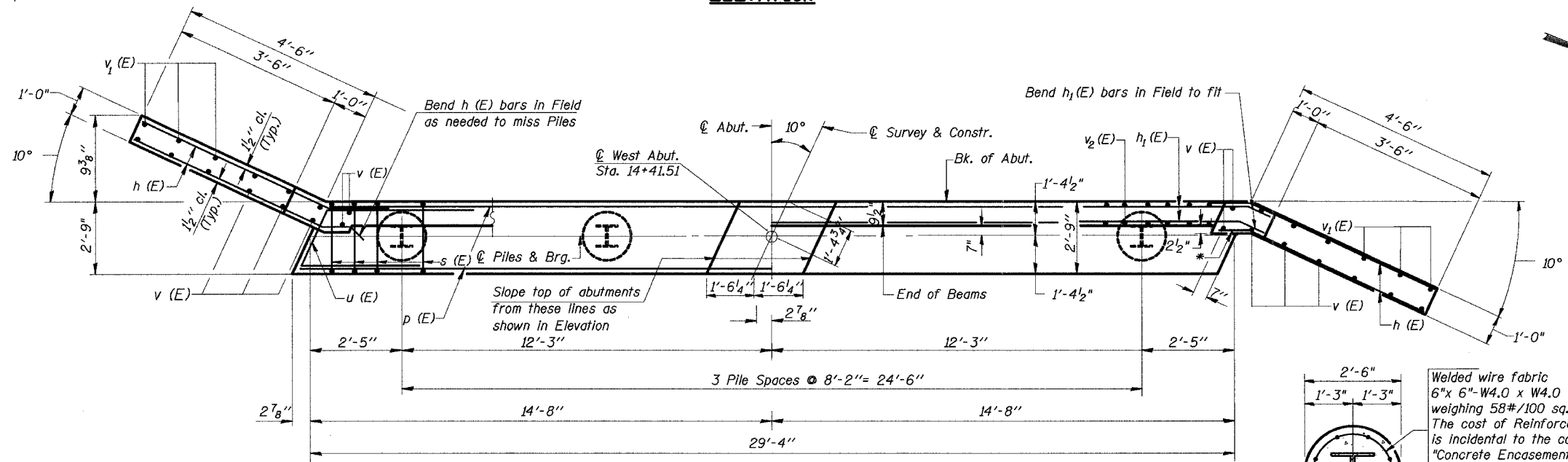


ELEVATION

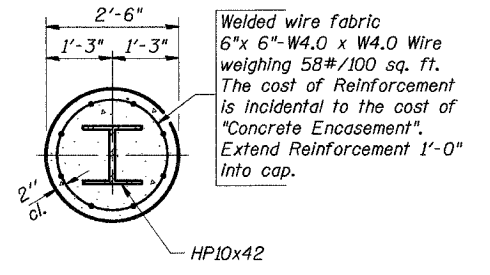


SECTION THRU ABUTMENT
(At Right Δ's)

* Cut or bend h (E) bars in wingwall, above bonded construction joint, as required to fit.



PLAN



SECTION B-B
PILE ENCASEMENT DETAIL

BILL OF MATERIAL

BAR	NO.	SIZE	LENGTH	SHAPE	
h (E)	28	#5	6'-1"	—	
h ₁ (E)	6	#4	29'-0"	—	
p (E)	10	#6	29'-0"	—	
s (E)	27	#5	10'-9"	□	
u (E)	8	#6	12'-5"	—	
v (E)	16	#4	5'-0"	—	
v ₁ (E)	12	#4	4'-0"	—	
v ₂ (E)	56	#4	4'-3"	—	
Concrete Structures				Cu. Yd.	12.6
Reinforcement Bars, Epoxy coated				Pound	1,430
Name Plates				Each	1
Test Piles Steel HP10x42				Each	1
Steel Piles HP10x42				Foot	75
Concrete Encasement				Cu. Yd.	2.2
Structure Excavation				Cu. Yd.	31
Metal Shoes				Each	3

PILE DATA

Type _____ Steel HP10x42 with Metal Shoes
 No. Req'd. _____ 4**
 Capacity _____ Drive to Refusal
 Est. Length _____ 25 Feet

** Includes 1 test pile to be driven in a permanent location.

WEST ABUTMENT
TR 167 OVER
ICG RAILROAD
WILLIAMSON COUNTY
SECTION 04-01225-00-BR

HURST-ROSCHKE ENGINEERS, INC.
CONSULTING ENGINEERS & ARCHITECTS
1805 INDUSTRIAL PARK DRIVE
MARION, ILLINOIS 62959

DESIGNED: MEB CHECKED: JSP
DRAWN: DEC CHECKED: MEB

BAR h (E)

BAR u (E)

BAR s (E)