

REVISIONS		
NUMBER	BY	DATE

0 1 2
 THIS BAR IS EQUAL TO 2"
 AT FULL SCALE (34X22).

**AURORA MUNICIPAL AIRPORT
 AURORA, ILLINOIS
 REHABILITATE AND STRENGTHEN TAXIWAY ALPHA-WEST END
 GRADING AND LANDSCAPING PLAN**

© Copyright CMT, Inc.
CMT
 CRAWFORD, MURPHY & TILLY, INC.
 CONSULTING ENGINEERS
 License No. 194-000613

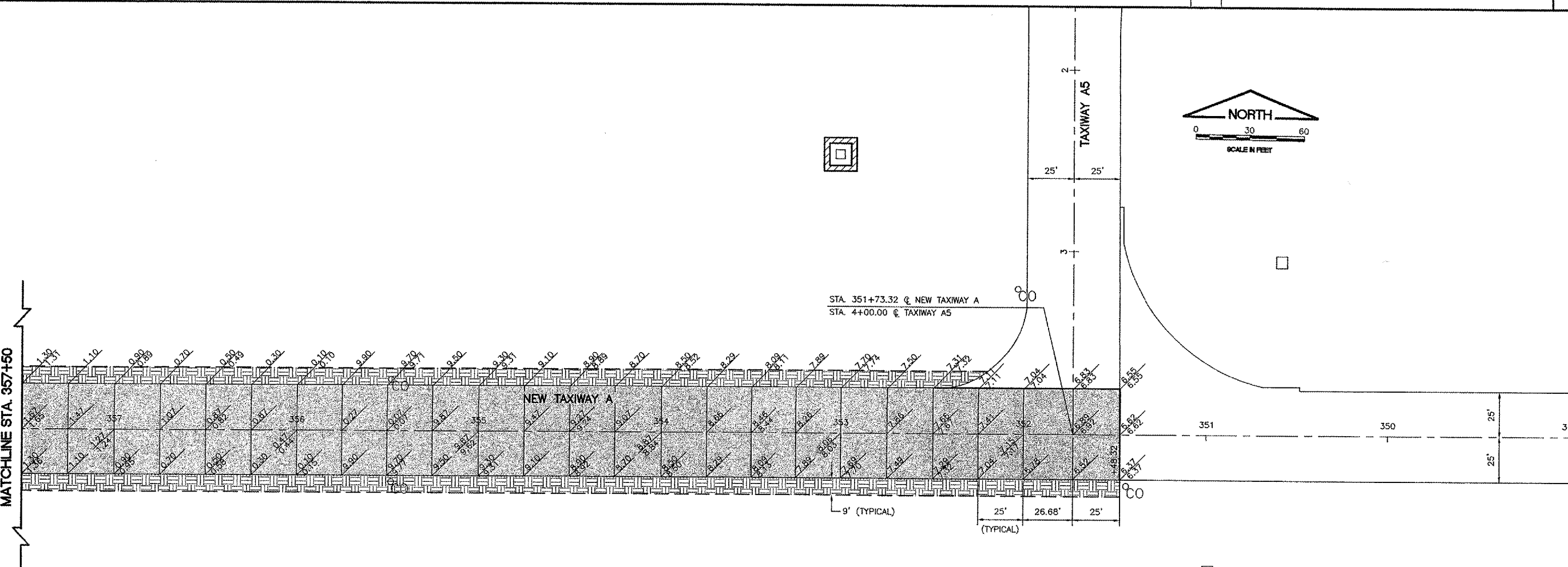
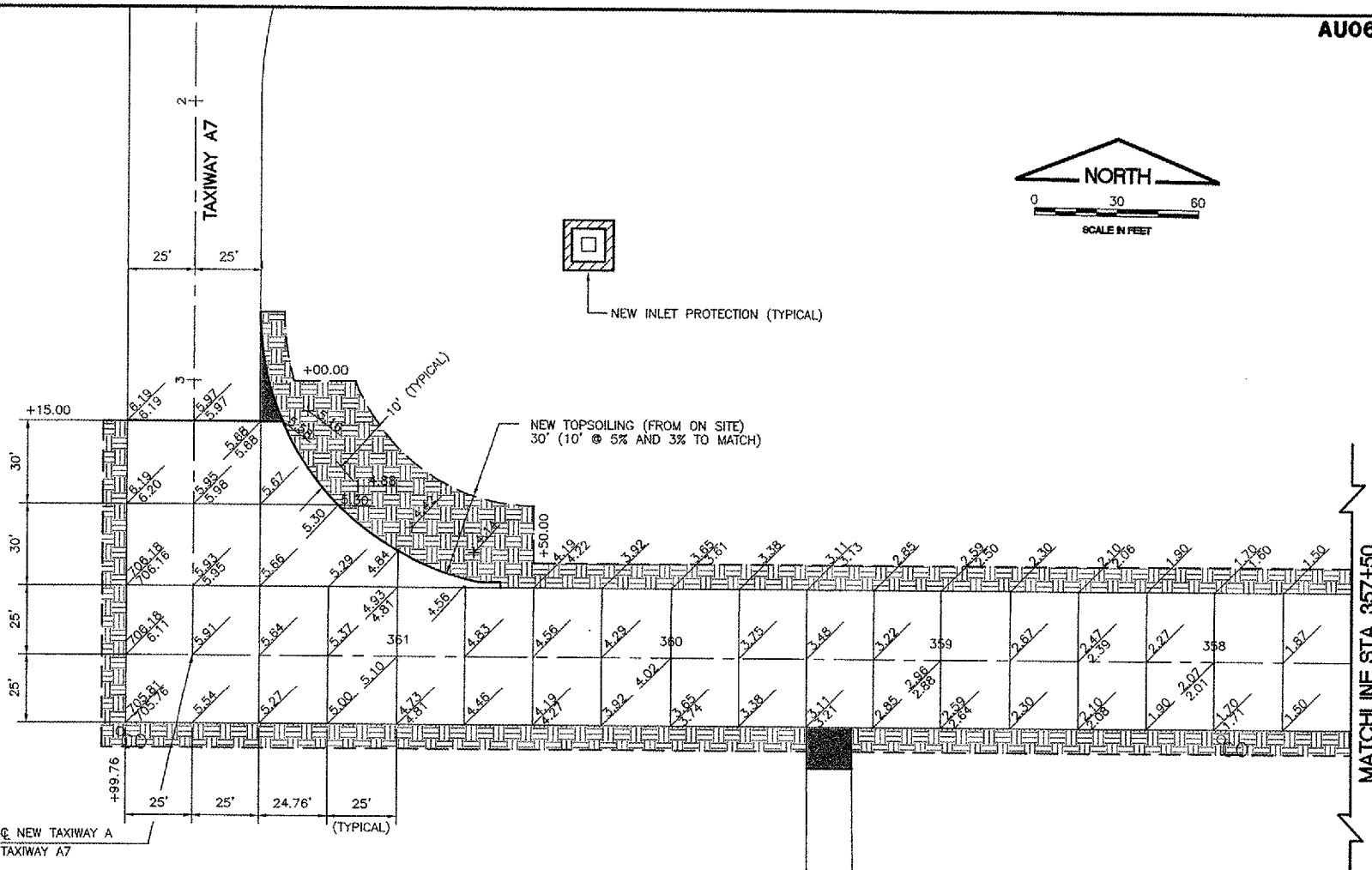
DESIGN BY: DKP
 DRAWN BY: JRO
 CHECKED BY: ARM
 APPROVED BY: DKP
 DATE: 04/20/07
 JOB No: 04285-05
 ILLINOIS PROJECT: ARR-3514
 A.I.P. PROJECT: 3-17-0003-B32
FINAL SUBMITTAL

LEGEND

- NEW ELEVATION (8.70)
- EXISTING ELEVATION (8.63)
- EXISTING UNDERDRAIN CLEANOUT
- NEW SOD
- NEW 9" P.C.C. PAVEMENT
- NEW BITUMINOUS PAVEMENT
- LANDSCAPING LIMITS
- NEW INLET PROTECTION

NOTE

- ANY EXCAVATION OR GROUND DISTURBED OUTSIDE THE LANDSCAPING LIMITS SHALL BE REPAIRED BY THE CONTRACTOR. THE COST OF REPAIRING THE GROUNDLINE SHALL BE INCIDENTAL TO THE CONTRACT.



MATCHLINE STA. 357+50

MATCHLINE STA. 357+50