

BY	
REVISION	
DATE	

DECATUR, ILLINOIS
 A.I.P. PROJ.: 3-17-0033-30
 I.L. PROJ.: DEC-3667

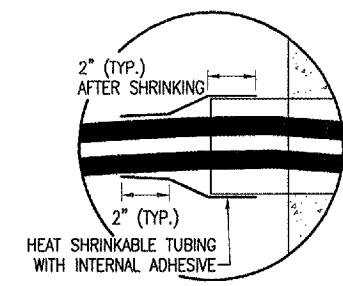
802-07RWY	03/18/05
R-541ELE.DWG	03/18/05
N/A	03/18/05
03/08/05	12/15/06
LAYOUT	RAW
DRAWN	RAW
REVIEWED	RAW

HANSON
 Hanson Professional Services Inc.
 1525 South Sixth Street
 Springfield, Illinois 62703-2886
 Offices Nationwide

RECONSTRUCT A PORTION OF RUNWAY 6/24, TAXIWAY A AND C
 ELECTRICAL DETAILS

THE LOCATION OF UNDERGROUND UTILITIES AS INDICATED ON THE PLANS HAS BEEN OBTAINED FROM EXISTING RECORDS. NEITHER THE OWNER NOR THE ENGINEER ASSUMES ANY RESPONSIBILITY WHATSOEVER, IN RESPECT TO THE ACCURACY OR SUFFICIENCY OF THE INFORMATION AND THERE IS NO GUARANTEE, EITHER EXPRESSED OR IMPLIED, THAT THE CONDITIONS ARE REPRESENTATIVE OF THOSE TO BE ENCOUNTERED IN THE CONSTRUCTION.

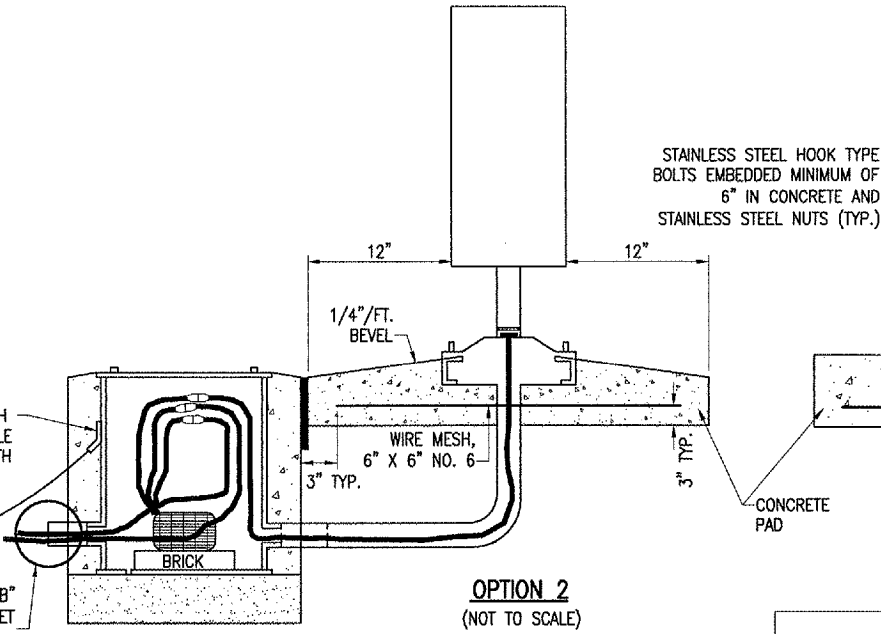
L-858 SIGN
 NOTES:
 SEE LIGHTING LAYOUT SHEET(S) FOR SIGN LEGEND, LOCATION, TYPE, SIZE, STYLE, AND CLASS.
 NUMBER AND SPACING OF LEGS AS PER MANUFACTURER'S REQUIREMENTS.



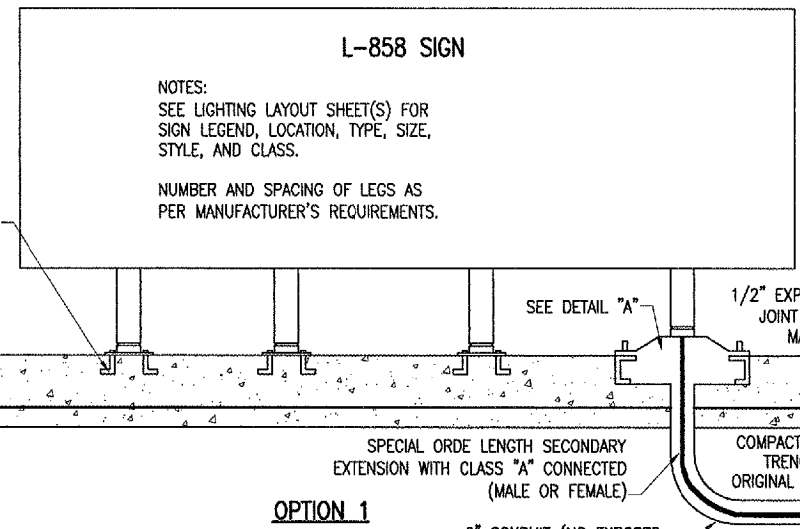
DETAIL "B"
 (NOT TO SCALE)

EXTERNAL GROUND LUG WITH BOLTED CONNECTOR SUITABLE FOR DIRECT BURIAL IN EARTH OR CONCRETE
 #6 AWG CU
 UL LISTED COPPERCLAD GROUND ROD 5/8" DIA. x 8'L (MIN.)

SEE DETAIL "B" ON THIS SHEET

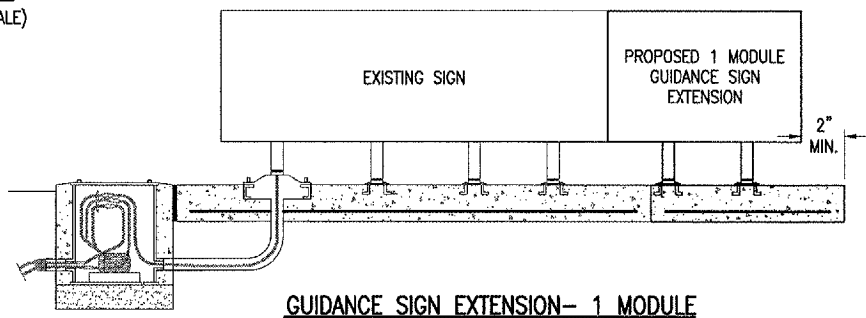


OPTION 2
 (NOT TO SCALE)

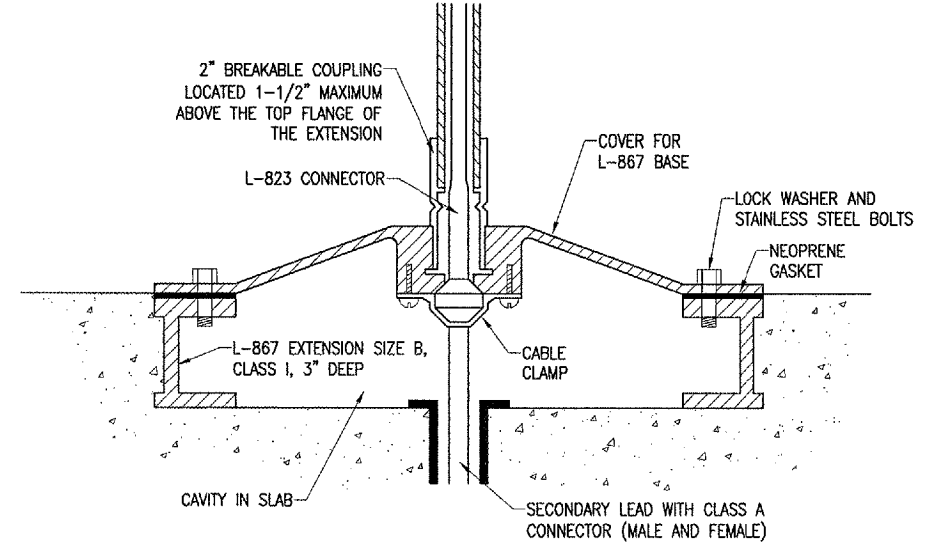


OPTION 1
 (NOT TO SCALE)

PROVIDE A MINIMUM OF THREE FEET SLACK IN EACH PRIMARY CABLE AND SECONDARY EXTENSION
 COVER BOLTS SLOPE TO DRAIN AWAY FROM L-867 BASE
 EXTERNAL GROUND LUG WITH BOLTED CONNECTOR SUITABLE FOR DIRECT BURIAL IN EARTH OR CONCRETE
 FINISHED GRADE
 610 CONCRETE 4" MIN. THICK
 L-830 TRANSFORMER, SIZE AS REQUIRED BY SIGN MANUFACTURER
 SHRINK TUBE
 1/C, #8, 5 KV, L-824 TYPE C CABLE
 #6 AWG CU
 UL LISTED COPPERCLAD GROUND ROD 5/8" DIA. x 8'L (MIN.)



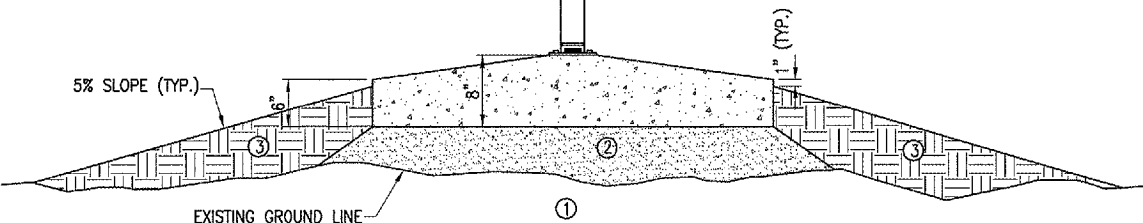
GUIDANCE SIGN EXTENSION- 1 MODULE
 (NOT TO SCALE)



DETAIL "A"
 (NOT TO SCALE)

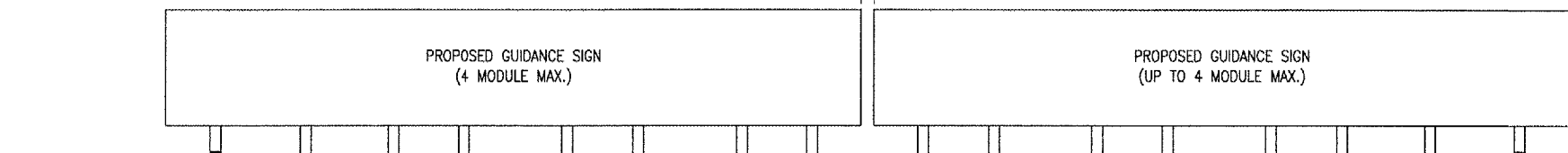
GENERAL NOTES

SEE GUIDANCE SIGN MODIFICATIONS & SIGN DATA SHEET FOR SIGN LEGEND, LOCATION, TYPE, AND SIZE.
 SEE SHEETS 24 THROUGH 25 FOR ELECTRICAL NOTES.
 NUMBER OF SIGN MODULES TO BE CONFIRMED WITH THE RESPECTIVE SIGN MANUFACTURER, FOR THE RESPECTIVE SIGN CHARACTERS.
 GROUND RODS SHALL NOT BE SPACED LESS THAN ONE ROD-LENGTH APART.



SIGN DETAIL
 (NOT TO SCALE)

- ① EXISTING SOD TO BE STRIPPED AND REMOVED
- ② SAND BACKFILL, VARIABLE DEPTH
- ③ PROPOSED TOPSOIL BACKFILL MATERIAL



LIGHTED AIRPORT GUIDANCE SIGN WHEN TWO POWER CIRCUITS ARE REQUIRED (PLAN VIEW)
 (NOT TO SCALE)

EXTERNAL GROUND LUG WITH BOLTED CONNECTOR SUITABLE FOR DIRECT BURIAL IN EARTH OR CONCRETE
 #6 AWG CU
 UL LISTED COPPERCLAD GROUND ROD 5/8" DIA. x 8'L (MIN.)

EXTERNAL GROUND LUG WITH BOLTED CONNECTOR SUITABLE FOR DIRECT BURIAL IN EARTH OR CONCRETE
 #6 AWG CU
 UL LISTED COPPERCLAD GROUND ROD 5/8" DIA. x 8'L (MIN.)

MAR 16, 2007 1:45 PM RAW
 I:\AIRPORTS\DECATUR\802-07RWY\AIRPORT\SHEETS\R-541ELE.DWG - ELEC. DETAILS 1