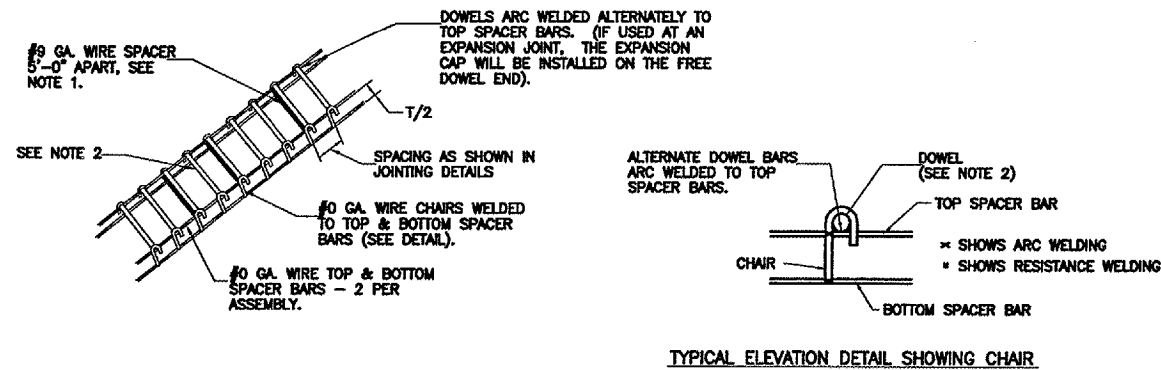
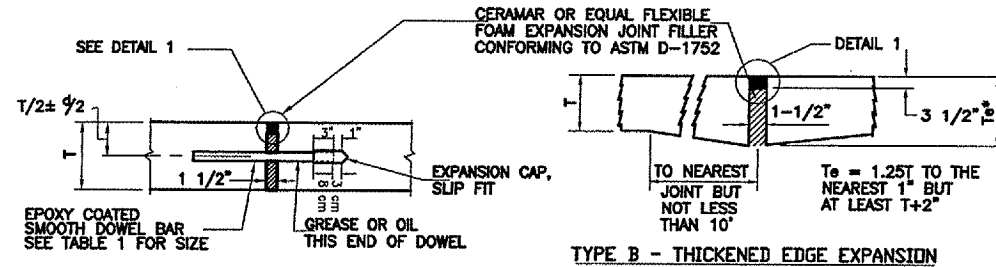


BASKET ASSEMBLY NOTES:

- 1.) #9 GA. WIRE SPACER BAR ARC WELDED TO THE BOTTOM OF TOP SPACER BAR. (MAY BE MECHANICALLY ATTACHED IN LIEU OF WELDING) 3 REQUIRED PER UNIT. THIS WIRE MUST BE CUT OR REMOVED PRIOR TO PAVING.
- 2.) DOWELS SHALL BE EPOXY COATED IN ACCORDANCE TO THE REQUIREMENTS OF AASHTO M254. IMMEDIATELY PRIOR TO PAVING, THE FREE END OF EACH DOWEL SHALL BE GREASED OR OILED, FOR HALF THE LENGTH OF THE DOWEL.
- 3.) ADJUST HEIGHT OF THE BASKET ASSEMBLIES (IN THE FIELD AT THE TIME OF CONSTRUCTION) SO THAT THE DOWELS ARE IN THE MIDDLE OF THE PROPOSED CONCRETE SLAB.

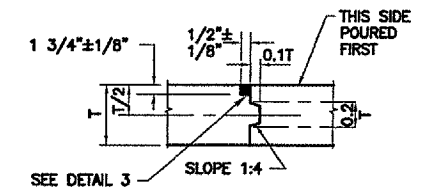


DOWEL BASKET ASSEMBLY DETAILS AND NOTES

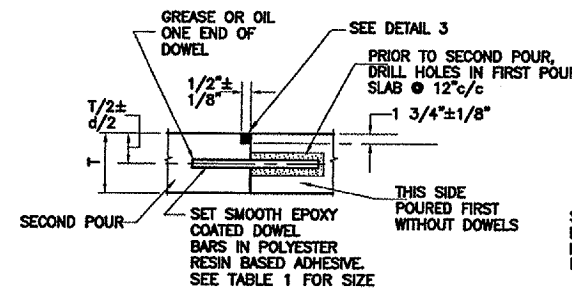


TYPE A - DOWELED EXPANSION
SYMBOL

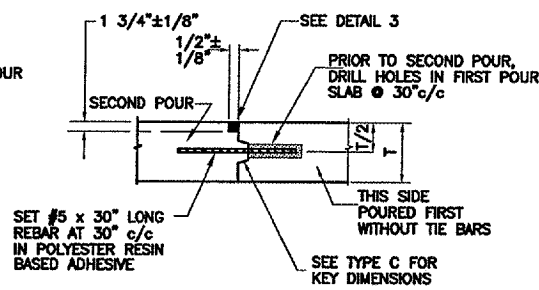
TYPE B - THICKENED EDGE EXPANSION
SYMBOL



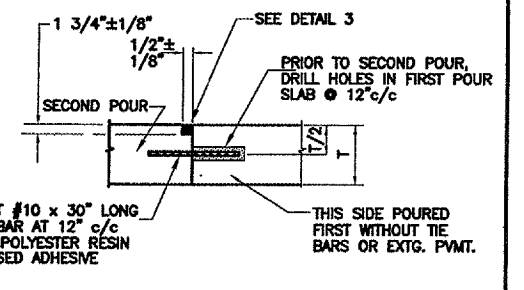
TYPE C - KEYED CONSTRUCTION
SYMBOL



TYPE D - DOWELED CONSTRUCTION
SYMBOL

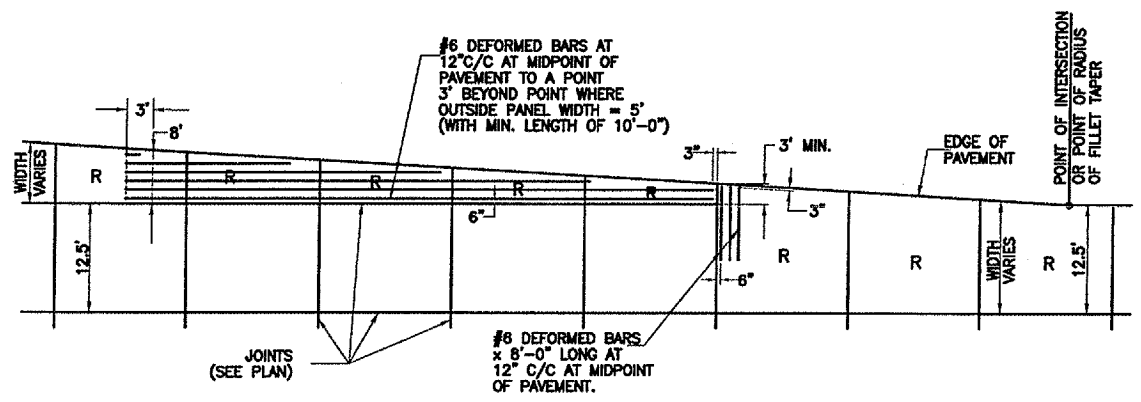


TYPE E - HINGED WITH KEY
SYMBOL

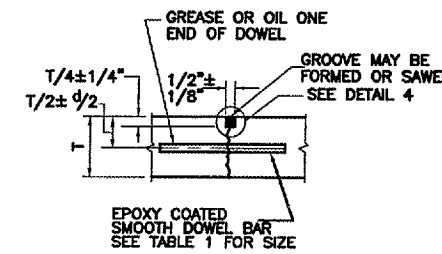


TYPE E-1 - HINGED WITHOUT KEY
SYMBOL

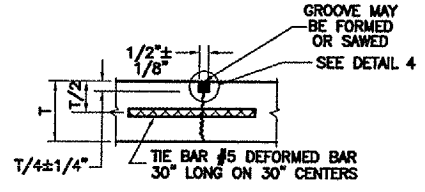
TYPE E-1 JOINT NOTE: THE TYPE E-1 JOINT SHALL BE A CONSTRUCTION BUTT JOINT WITH TIE BARS. THE TIE BARS WILL BE USED TO TRANSFER THE LOAD ACROSS THE JOINT.



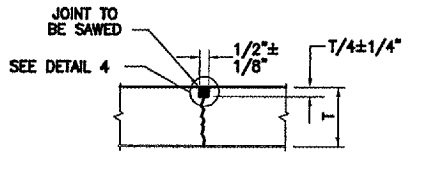
FILLET TAPER DETAIL



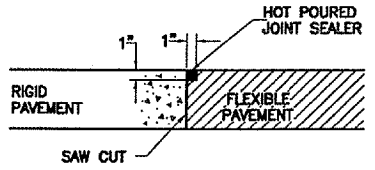
TYPE F - DOWELED CONTRACTION
SYMBOL



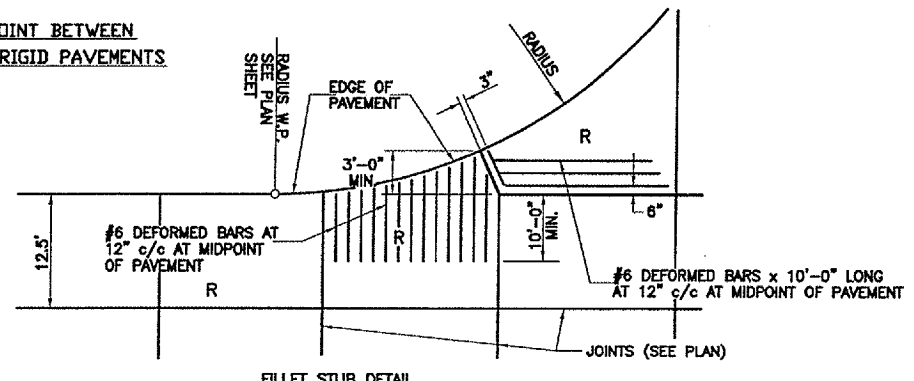
TYPE G - HINGED CONTRACTION
SYMBOL



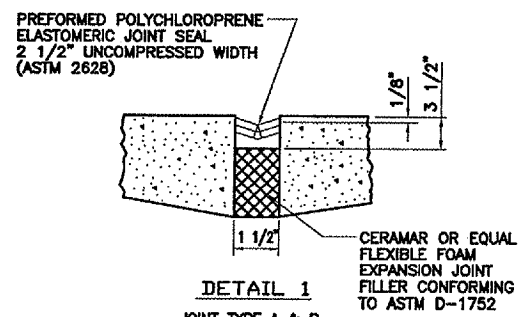
TYPE H - DUMMY CONTRACTION
SYMBOL



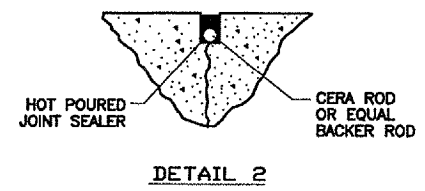
DETAIL - JOINT BETWEEN FLEXIBLE AND RIGID PAVEMENTS



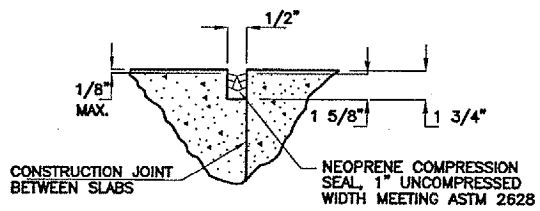
FILLET STUB DETAIL



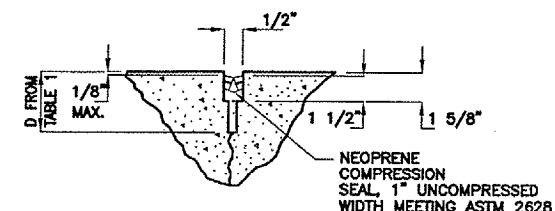
DETAIL 1 JOINT TYPE A & B



DETAIL 2



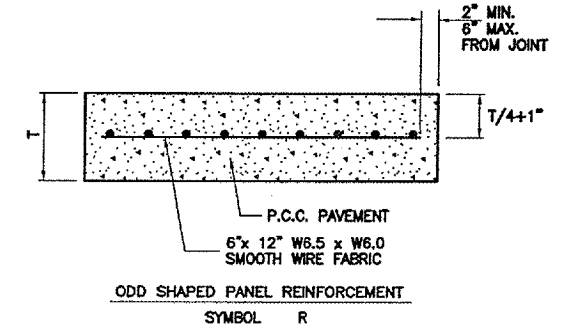
DETAIL 3 JOINT TYPES C, D, AND E



DETAIL 4 JOINT TYPES F, G, AND H

TABLE 1

PAVEMENT THICKNESS T - INCHES	DEPTH OF CONTRACTION JOINT INITIAL SAW CUT D, INCHES D=(T/4)±1/4"	STEEL DOWELS		
		DIAMETER (INCHES)	LENGTH (INCHES)	SPACING (INCHES)
8	2.00	1.00	19	12
9	2.25	1.00	19	12
10	2.50	1.00	19	12
12	3.00	1.00	19	12
15	3.75	1.25	20	15
17	4.25	1.50	20	18



ODD SHAPED PANEL REINFORCEMENT
SYMBOL R