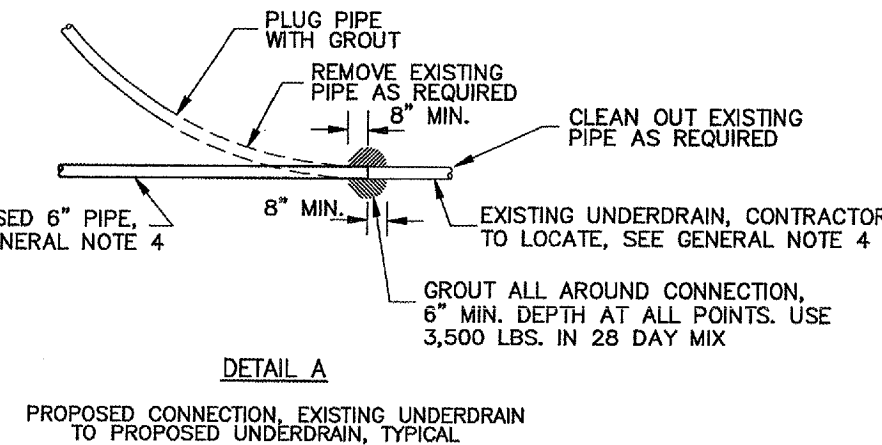
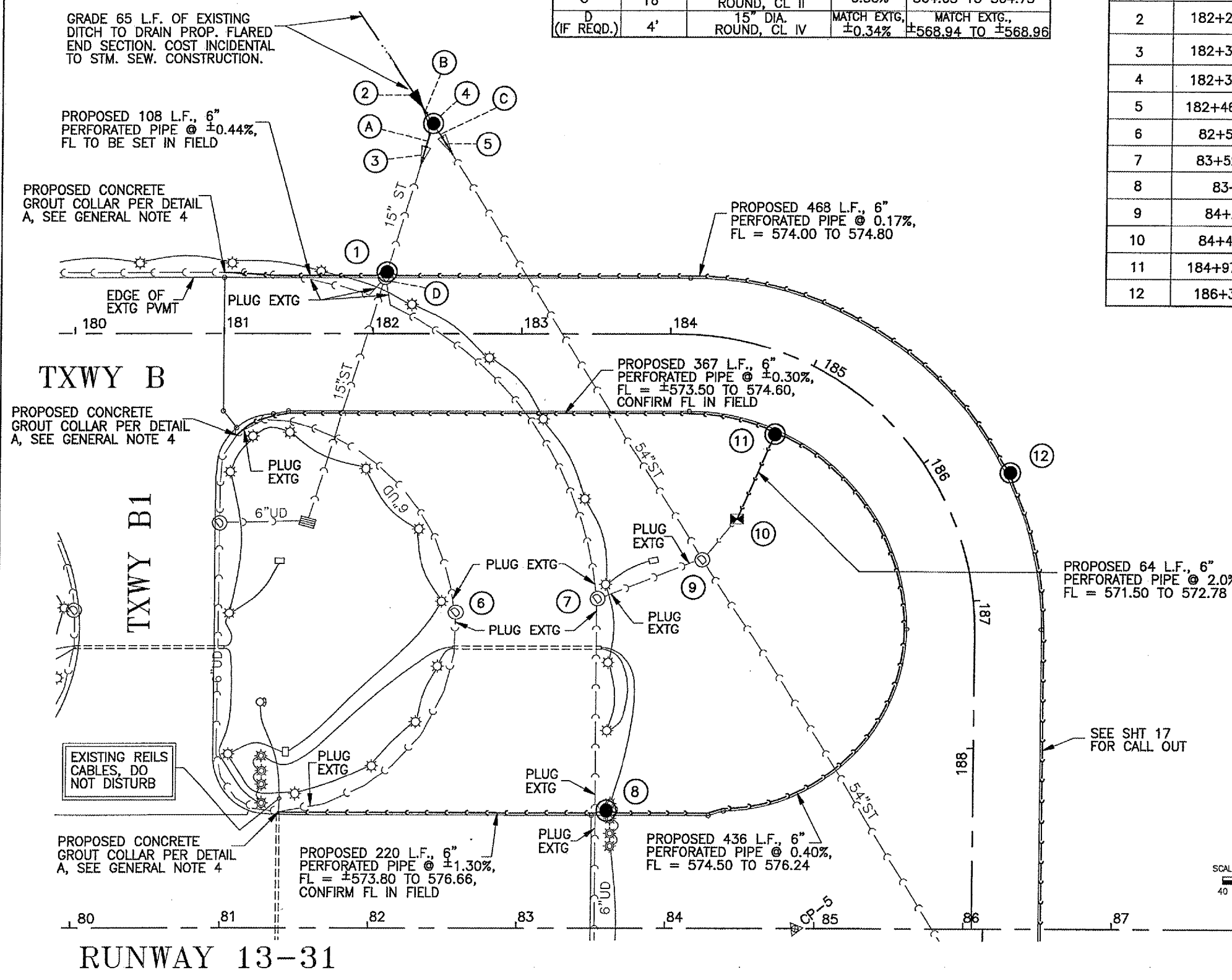


TAXIWAY B AREA STORM SEWER SCHEDULE

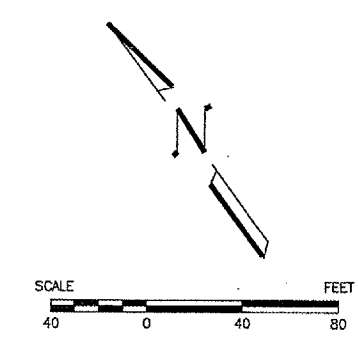
PIPE RUN LETTER	LENGTH, L.F.	SIZE & TYPE	PIPE SLOPE	START / END FLOWLINES
A	20'	15" DIA. ROUND, CL IV	MATCH EXTG. ±0.50%	MATCH EXTG., ±564.85 TO ±564.95
B	15'	60" DIA. ROUND, CL II	0.10%	564.64 TO 564.65
C	16'	54" DIA. ROUND, CL II	0.50%	564.65 TO 564.73
D (IF REQD.)	4'	15" DIA. ROUND, CL IV	MATCH EXTG. ±0.34%	MATCH EXTG., ±568.94 TO ±568.96

DRAINAGE STRUCTURE SCHEDULE

NUMBER	LOCATION	TYPE	E. ELEV.	LID OR GRATE ELEV.	REMARK
1	±182+09.1, LT. 41.5'	EXTG. MANHOLE, 4' DIA.	MEET EXTG. ±566.91'	EXTG.=575.81', PROP.=576.91'	RELOCATE AND ADJUST F & G ELEV
2	182+25.4, LT. 161.8'	PRC FLARED END SECTION, 60" DIA.	564.63'	----	
3	182+34.6, LT. 125.1'	EXISTING PRC FLARED END SECTION, 15" DIA.	564.92'	----	TO BE REMOVED
4	182+39.8, LT. 141.5'	MANHOLE, 8" DIA. WITH FLAT SLAB TOP	564.65'	572.50'	
5	182+46.09, LT. 131.4'	EXISTING PRC FLARED END SECTION, 54" DIA.	564.67'	----	TO BE REMOVED
6	82+56.58, LT. 212'	EXTG. MANHOLE, 2' DIA.	±574.61'	577.64'	TO BE REMOVED
7	83+52.8, LT. 221.4'	EXTG. MANHOLE, 4' DIA.	±571.50'	577.64'	TO BE REMOVED
8	83+60, LT. 78'	MANHOLE SPL., 2' DIA.	576.24'	579.49'	
9	84+23, LT. 248'	EXISTING 54" X 36" R.C. RISER TEE	±567.45'	EXTG.=575.75', PROP.=576.07'	ADJUST F & G ELEV
10	84+45.5, LT. 275'	EXISTING INLET	±569.80'	574.00'	NO CHANGE
11	184+97.5, RT. 52.35'	MANHOLE SPL., 2' DIA.	572.78'	577.38'	
12	186+30, LT. 47.25'	MANHOLE SPL., 2' DIA.	574.80'	577.67'	



- LEGEND:
- ☼ EXTG EDGE LIGHT
 - ▭ EXTG GUIDANCE SIGN
 - EXTG ELECTRICAL CABLE
 - ()— EXTG STORM SEWER, FIELD TILE OR UNDERDRAIN
 - ▣ EXTG INLET
 - ▽ EXTG OUTLET
 - ⊙ EXTG STORM MANHOLE
 - ⊙ EXTG SANITARY MANHOLE
 - ()— EXTG DRAINAGE DITCH
 - ==== EXTG CONDUIT OR DUCT BANK
 - PROPOSED MANHOLE
 - ▣ PROPOSED INLET
 - ▷ PROPOSED FLARED END SECTION
 - ()— PROPOSED STORM SEWER, SANITARY SEWER OR UNDERDRAIN
 - ① PROPOSED DRAINAGE STRUCTURE NUMBER



NOTE:
 SEE SHEET 17 FOR GENERAL DRAINAGE NOTES.

G:\AIRPORT\A06T024 R31 EXTN, P\MT\DRAINAGE1.DWG, 5/9/2007 8:30:45 AM, jeffm