

DATE	
REVISION	
BY	

SAINT LOUIS DOWNTOWN AIRPORT
 A Division of Bi-State Development Agency
 I.L. PROJ.: 3-17-0039-B17
 I.L. PROJ.: GPS-3664

FILE #	84507TXD_0800
PROJECT #	R-142ELE.DWG
DATE	01/15/07
LAYOUT	MDR 01/15/07
DRAWN	MDR 01/15/07
REVIEWED	CAH 01/26/07

HANSON
 Hanson Professional Services, Inc.
 4227 East City Expressway, Suite 130
 St. Louis, MO 63045-1008
 Offices Nationwide

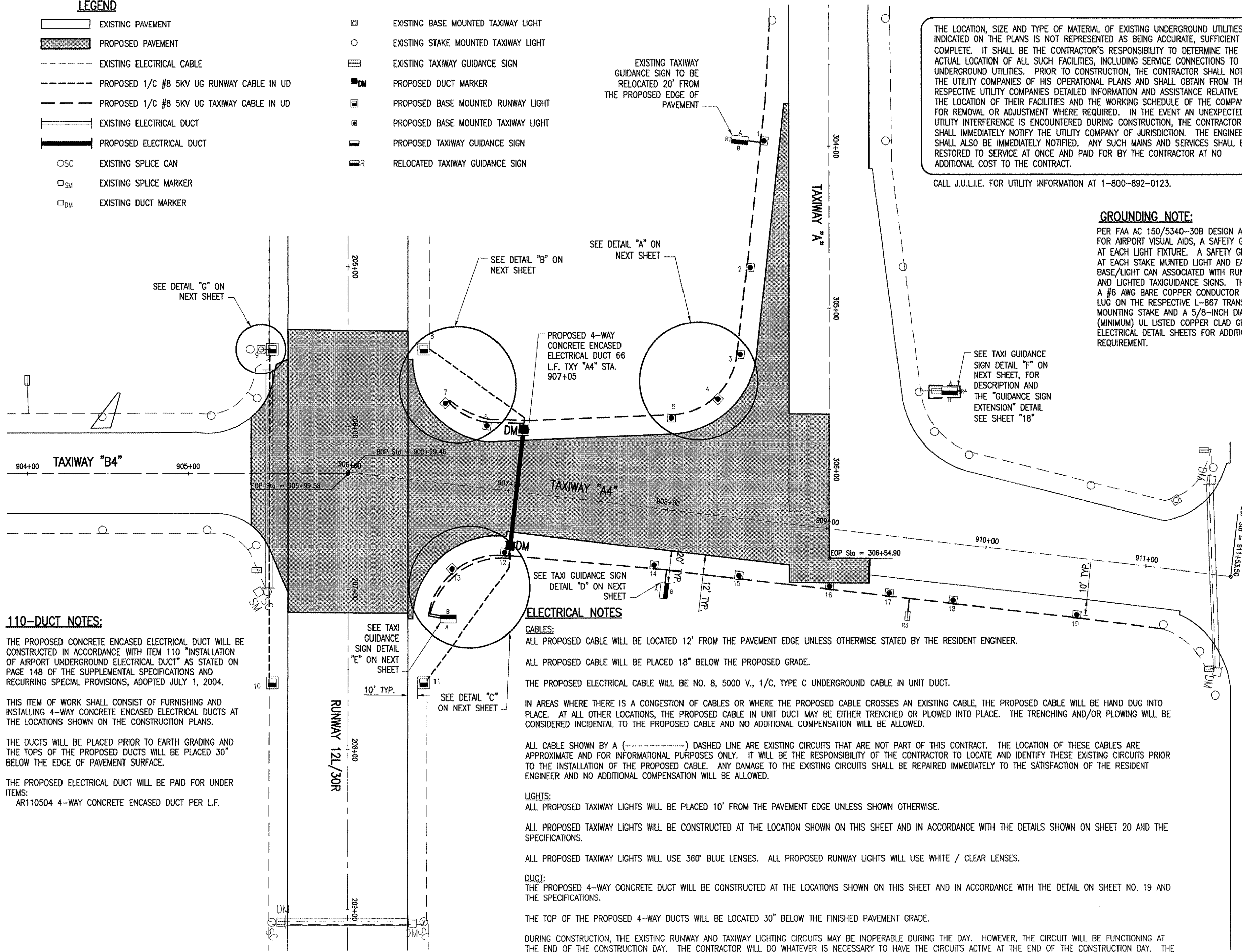
CONSTRUCT TAXIWAY "A4"
PROPOSED ELECTRICAL PLAN
 16
 16 of 32 sheets

- LEGEND**
- EXISTING PAVEMENT
 - PROPOSED PAVEMENT
 - EXISTING ELECTRICAL CABLE
 - PROPOSED 1/C #8 5KV UG RUNWAY CABLE IN UG
 - PROPOSED 1/C #8 5KV UG TAXIWAY CABLE IN UG
 - EXISTING ELECTRICAL DUCT
 - PROPOSED ELECTRICAL DUCT
 - OSC EXISTING SPLICE CAN
 - SM EXISTING SPLICE MARKER
 - DM EXISTING DUCT MARKER
 - EXISTING BASE MOUNTED TAXIWAY LIGHT
 - EXISTING STAKE MOUNTED TAXIWAY LIGHT
 - EXISTING TAXIWAY GUIDANCE SIGN
 - PROPOSED DUCT MARKER
 - PROPOSED BASE MOUNTED RUNWAY LIGHT
 - PROPOSED BASE MOUNTED TAXIWAY LIGHT
 - PROPOSED TAXIWAY GUIDANCE SIGN
 - RELOCATED TAXIWAY GUIDANCE SIGN

THE LOCATION, SIZE AND TYPE OF MATERIAL OF EXISTING UNDERGROUND UTILITIES INDICATED ON THE PLANS IS NOT REPRESENTED AS BEING ACCURATE, SUFFICIENT OR COMPLETE. IT SHALL BE THE CONTRACTOR'S RESPONSIBILITY TO DETERMINE THE ACTUAL LOCATION OF ALL SUCH FACILITIES, INCLUDING SERVICE CONNECTIONS TO UNDERGROUND UTILITIES. PRIOR TO CONSTRUCTION, THE CONTRACTOR SHALL NOTIFY THE UTILITY COMPANIES OF HIS OPERATIONAL PLANS AND SHALL OBTAIN FROM THE RESPECTIVE UTILITY COMPANIES DETAILED INFORMATION AND ASSISTANCE RELATIVE TO THE LOCATION OF THEIR FACILITIES AND THE WORKING SCHEDULE OF THE COMPANIES FOR REMOVAL OR ADJUSTMENT WHERE REQUIRED. IN THE EVENT AN UNEXPECTED UTILITY INTERFERENCE IS ENCOUNTERED DURING CONSTRUCTION, THE CONTRACTOR SHALL IMMEDIATELY NOTIFY THE UTILITY COMPANY OF JURISDICTION. THE ENGINEER SHALL ALSO BE IMMEDIATELY NOTIFIED. ANY SUCH MAINS AND SERVICES SHALL BE RESTORED TO SERVICE AT ONCE AND PAID FOR BY THE CONTRACTOR AT NO ADDITIONAL COST TO THE CONTRACT.

CALL J.U.L.I.E. FOR UTILITY INFORMATION AT 1-800-892-0123.

GROUNDING NOTE:
 PER FAA AC 150/5334-30B DESIGN AND INSTALLATION DETAILS FOR AIRPORT VISUAL AIDS, A SAFETY GROUND MUST BE INSTALLED AT EACH LIGHT FIXTURE. A SAFETY GROUND SHALL BE INSTALLED AT EACH STAKE MOUNTED LIGHT AND EACH TRANSFORMER BASE/LIGHT CAN ASSOCIATED WITH RUNWAY LIGHTS, TAXIWAY LIGHTS, AND LIGHTED TAXIWAY GUIDANCE SIGNS. THE SAFETY GROUND SHALL BE A #6 AWG BARE COPPER CONDUCTOR CONNECTED TO THE GROUND LUG ON THE RESPECTIVE L-867 TRANSFORMER BAE/LIGHT CAN OR MOUNTING STAKE AND A 5/8-INCH DIAMETER BY 8-FOOT LONG (MINIMUM) UL LISTED COPPER CLAD GROUND ROD. SEE ELECTRICAL DETAIL SHEETS FOR ADDITIONAL INFORMATION ON THIS REQUIREMENT.



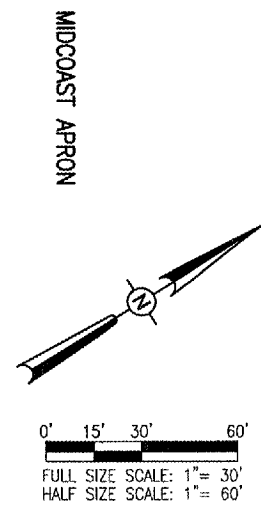
110-DUCT NOTES:
 THE PROPOSED CONCRETE ENCASED ELECTRICAL DUCT WILL BE CONSTRUCTED IN ACCORDANCE WITH ITEM 110 "INSTALLATION OF AIRPORT UNDERGROUND ELECTRICAL DUCT" AS STATED ON PAGE 148 OF THE SUPPLEMENTAL SPECIFICATIONS AND RECURRING SPECIAL PROVISIONS, ADOPTED JULY 1, 2004.
 THIS ITEM OF WORK SHALL CONSIST OF FURNISHING AND INSTALLING 4-WAY CONCRETE ENCASED ELECTRICAL DUCTS AT THE LOCATIONS SHOWN ON THE CONSTRUCTION PLANS.
 THE DUCTS WILL BE PLACED PRIOR TO EARTH GRADING AND THE TOPS OF THE PROPOSED DUCTS WILL BE PLACED 30" BELOW THE EDGE OF PAVEMENT SURFACE.
 THE PROPOSED ELECTRICAL DUCT WILL BE PAID FOR UNDER ITEMS:
 AR110504 4-WAY CONCRETE ENCASED DUCT PER L.F.

ELECTRICAL NOTES

CABLES:
 ALL PROPOSED CABLE WILL BE LOCATED 12' FROM THE PAVEMENT EDGE UNLESS OTHERWISE STATED BY THE RESIDENT ENGINEER.
 ALL PROPOSED CABLE WILL BE PLACED 18" BELOW THE PROPOSED GRADE.
 THE PROPOSED ELECTRICAL CABLE WILL BE NO. 8, 5000 V., 1/C, TYPE C UNDERGROUND CABLE IN UNIT DUCT.
 IN AREAS WHERE THERE IS A CONGESTION OF CABLES OR WHERE THE PROPOSED CABLE CROSSES AN EXISTING CABLE, THE PROPOSED CABLE WILL BE HAND DUG INTO PLACE. AT ALL OTHER LOCATIONS, THE PROPOSED CABLE IN UNIT DUCT MAY BE EITHER TRENCHED OR PLOWED INTO PLACE. THE TRENCHING AND/OR PLOWING WILL BE CONSIDERED INCIDENTAL TO THE PROPOSED CABLE AND NO ADDITIONAL COMPENSATION WILL BE ALLOWED.
 ALL CABLE SHOWN BY A (---) DASHED LINE ARE EXISTING CIRCUITS THAT ARE NOT PART OF THIS CONTRACT. THE LOCATION OF THESE CABLES ARE APPROXIMATE AND FOR INFORMATIONAL PURPOSES ONLY. IT WILL BE THE RESPONSIBILITY OF THE CONTRACTOR TO LOCATE AND IDENTIFY THESE EXISTING CIRCUITS PRIOR TO THE INSTALLATION OF THE PROPOSED CABLE. ANY DAMAGE TO THE EXISTING CIRCUITS SHALL BE REPAIRED IMMEDIATELY TO THE SATISFACTION OF THE RESIDENT ENGINEER AND NO ADDITIONAL COMPENSATION WILL BE ALLOWED.

LIGHTS:
 ALL PROPOSED TAXIWAY LIGHTS WILL BE PLACED 10' FROM THE PAVEMENT EDGE UNLESS SHOWN OTHERWISE.
 ALL PROPOSED TAXIWAY LIGHTS WILL BE CONSTRUCTED AT THE LOCATION SHOWN ON THIS SHEET AND IN ACCORDANCE WITH THE DETAILS SHOWN ON SHEET 20 AND THE SPECIFICATIONS.
 ALL PROPOSED TAXIWAY LIGHTS WILL USE 360° BLUE LENSES. ALL PROPOSED RUNWAY LIGHTS WILL USE WHITE / CLEAR LENSES.

DUCT:
 THE PROPOSED 4-WAY CONCRETE DUCT WILL BE CONSTRUCTED AT THE LOCATIONS SHOWN ON THIS SHEET AND IN ACCORDANCE WITH THE DETAIL ON SHEET NO. 19 AND THE SPECIFICATIONS.
 THE TOP OF THE PROPOSED 4-WAY DUCTS WILL BE LOCATED 30" BELOW THE FINISHED PAVEMENT GRADE.
 DURING CONSTRUCTION, THE EXISTING RUNWAY AND TAXIWAY LIGHTING CIRCUITS MAY BE INOPERABLE DURING THE DAY. HOWEVER, THE CIRCUIT WILL BE FUNCTIONING AT THE END OF THE CONSTRUCTION DAY. THE CONTRACTOR WILL DO WHATEVER IS NECESSARY TO HAVE THE CIRCUITS ACTIVE AT THE END OF THE CONSTRUCTION DAY. THE WORK WILL BE CONSIDERED AS PART OF THE LIGHTING INSTALLATION AND NO ADDITIONAL COMPENSATION WILL BE ALLOWED.



APR 18, 2007 1:35 PM BJK
 I:\AIRPORTS\ST. LOUIS DOWNTOWN\84507TXD\AIRPORT_SHEETS\142ELE.DWG - PROPOSED ELECTRICAL PLAN