

620900--PAVEMENT MARKING REMOVAL NOTES

THE EXISTING PAVEMENT MARKING SHALL BE REMOVED IN ACCORDANCE WITH ITEM 620 "PAVEMENT MARKING" AS STATED ON PAGE 77 OF THE SUPPLEMENTAL SPECIFICATIONS AND RECURRING SPECIAL PROVISIONS, ADOPTED JULY 1, 2004.

THE AREAS THAT ARE DESIGNATED FOR REMOVAL ARE SHOWN ON THE CONSTRUCTION PLANS.

ALL AREAS TO BE REMOVED ARE CALCULATED AREAS. ANY ADDITIONAL AREAS, DUE TO OVER SPRAY, SHALL BE CONSIDERED INCIDENTAL TO THE CONTRACT AND NO ADDITIONAL COMPENSATION WILL BE ALLOWED.

THE PROPOSED MARKING REMOVAL WILL BE PAID FOR UNDER ITEM: AR620900 PAVEMENT MARKING REMOVAL _____ PER S.F.

620--PAVEMENT MARKING--WATERBORNE NOTES

THE PAVEMENT MARKING--WATERBORNE (620) SHALL BE PLACED IN ACCORDANCE WITH ITEM 620 "PAVEMENT MARKING" AS STATED ON PAGE 77 OF THE SUPPLEMENTAL SPECIFICATIONS AND RECURRING SPECIAL PROVISIONS, ADOPTED JULY 1, 2004.

THIS ITEM SHALL CONSIST OF RUNWAY AND TAXIWAY MARKING IN ACCORDANCE WITH THESE SPECIFICATIONS AND AT THE LOCATIONS SHOWN ON THE CONSTRUCTION PLANS. ALL RUNWAY MARKING WILL BE WHITE IN COLOR WITH A BLACK OUTLINE AND THE TAXIWAY MARKING WILL BE YELLOW IN COLOR WITH A BLACK OUTLINE. THE PROPOSED PAVEMENT MARKING WILL BE APPLIED IN TWO APPLICATIONS.

ANY MATERIAL DELIVERED THAT FAILS TO MEET THE SPECIFICATIONS SHALL BE DISPOSED OF BY THE VENDOR AND IMMEDIATELY REPLACED WITH ACCEPTABLE MATERIAL ENTIRELY AT THE VENDOR'S EXPENSE, INCLUDING HANDLING AND TRANSPORTATION CHARGES.

ALL PROPOSED MARKING WILL BE COMPLETED IN ACCORDANCE WITH THE DETAILS SHOWN ON THE CONSTRUCTION PLANS.

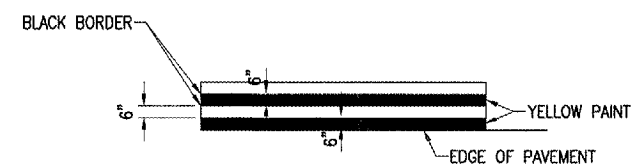
GLASS BEADS SHALL BE REQUIRED ONLY ON THE SECOND APPLICATION.

CUT-OFF SHEETS WILL BE REQUIRED TO INSURE STRAIGHT EDGES.

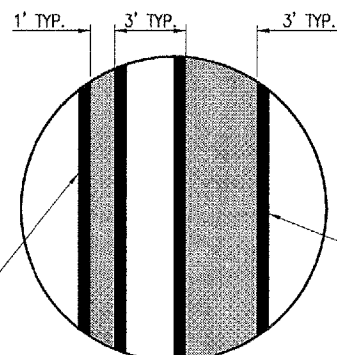
THE PROPOSED MARKING WILL BE PAID FOR UNDER ITEM: AR620520 PAVEMENT MARKING--WATERBORNE _____ PER S.F.

LEGEND

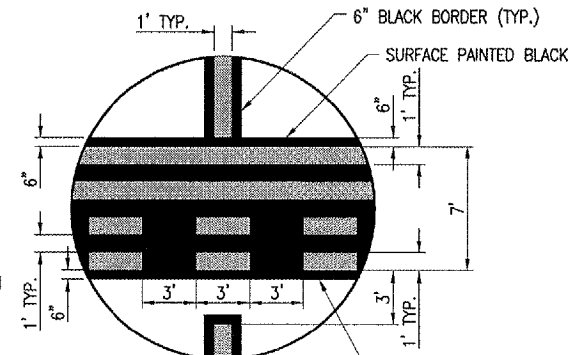
- EXISTING PAVEMENT
- PROPOSED PAVEMENT
- EXISTING MARKING
- EXISTING MARKING (TO BE REMOVED)
- PROPOSED MARKING w/BLACK BORDER



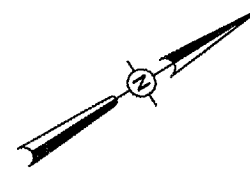
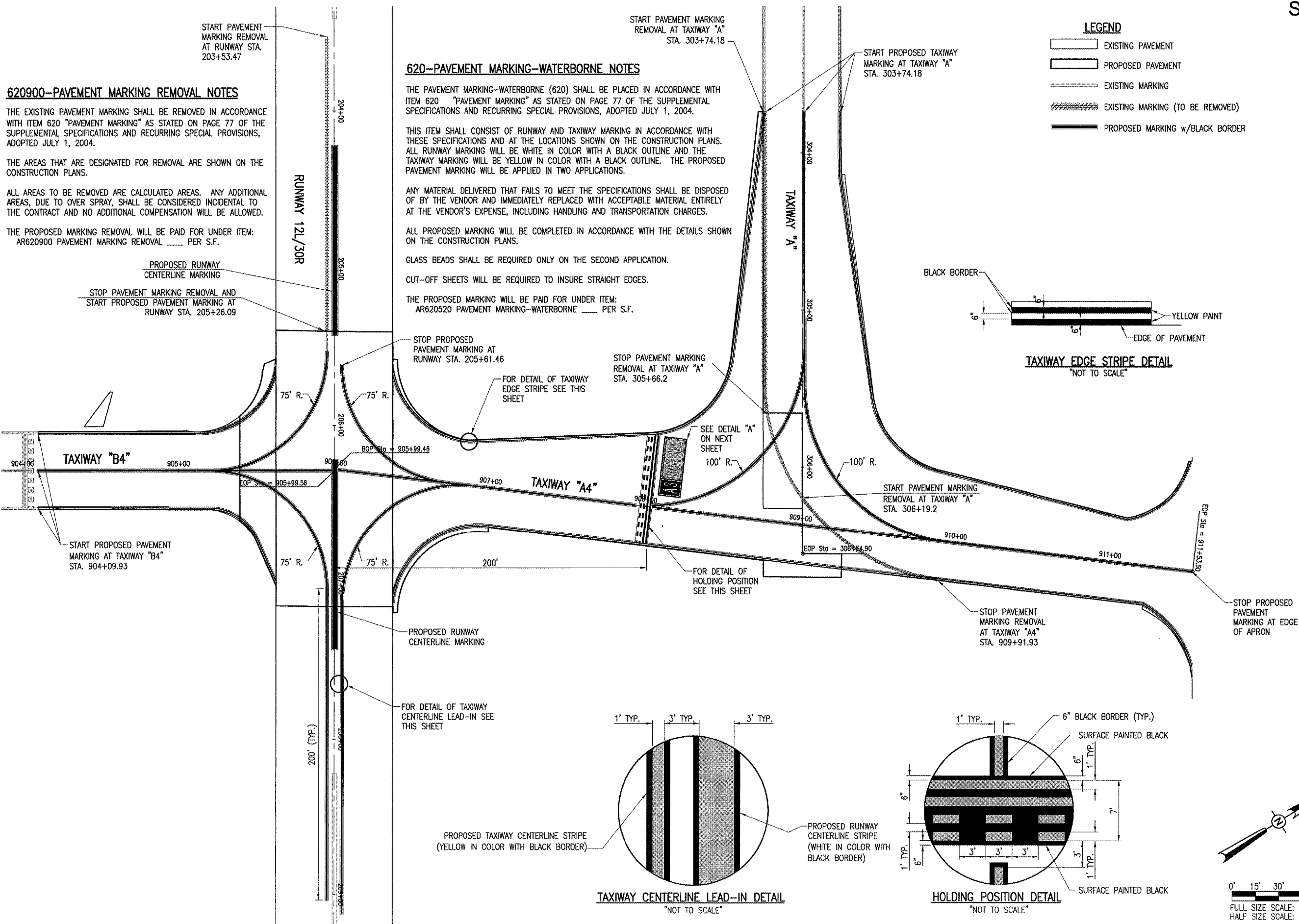
TAXIWAY EDGE STRIPE DETAIL
"NOT TO SCALE"



TAXIWAY CENTERLINE LEAD-IN DETAIL
"NOT TO SCALE"



HOLDING POSITION DETAIL
"NOT TO SCALE"



0' 15' 30' 60'
FULL SIZE SCALE: 1" = 30'
HALF SIZE SCALE: 1" = 60'

DATE	REVISION	BY

SAINT LOUIS DOWNTOWN AIRPORT
A Division of Bi-State Development Agency



ISS. Project No. 84-507TXD 0800	DATE	1/12/07
Revision R-151MRK.DWG	DATE	1/12/07
Scale 1"=30'	DATE	1/12/07
DATE	1/12/07	
LAYOUT	JAC	1/12/07
DRAWN	BAK	1/12/07
REVIEWED	CAH	01/26/07

HANSON
Hanson Professional Services Inc.
4227 Earth City Expressway, Suite 130
St. Louis, MO 63045-1308
Offices Nationwide

CONSTRUCT TAXIWAY "A4"
PROPOSED MARKING PLAN

APR 18, 2007 2:08 PM BAK
I:\AIRPORTS\ST. LOUIS DOWNTOWN\84507TXD\AIRPORT\SHEETS\R-151MRK.DWG - MARKING