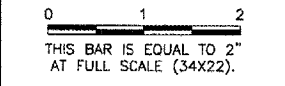


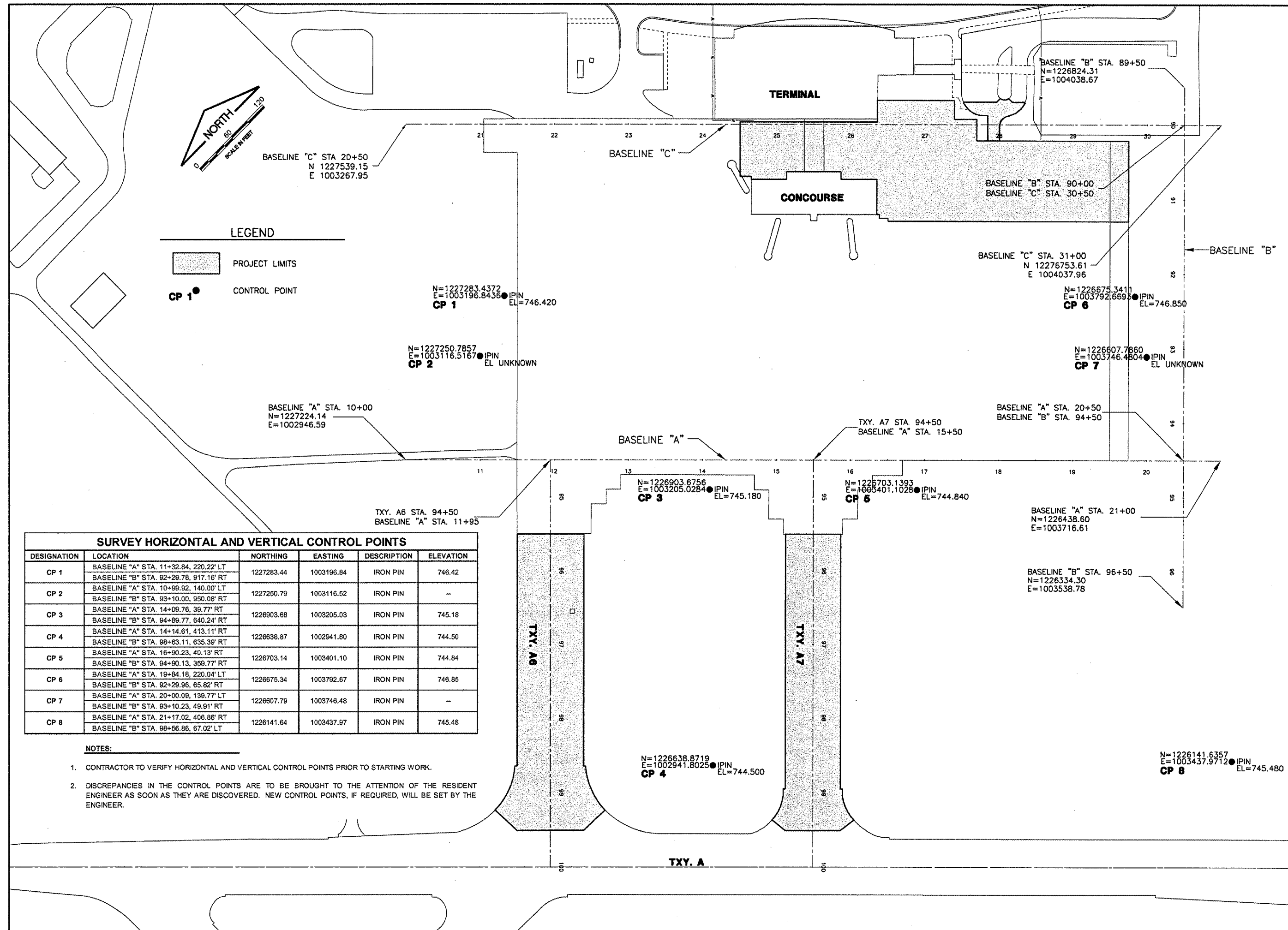
REVISIONS		
NUMBER	BY	DATE



**UNIVERSITY OF ILLINOIS  
 WILLARD AIRPORT  
 REHABILITATE AIR CARRIER RAMP, PHASE 2  
 HORIZONTAL &  
 VERTICAL CONTROLS**

© Copyright CMT, Inc.  
**CMT**  
 CRAWFORD, MURPHY & TILLY, INC.  
 CONSULTING ENGINEERS  
 License No. 194-000513

DESIGN BY:	SMS
DRAWN BY:	CMT
CHECKED BY:	<i>SMS</i>
APPROVED BY:	<i>SMS</i>
DATE:	4/27/2007
JOB No:	0305903
CMI-3663 3-17-0016-XX	
SHEET 05 OF 49 SHEETS	



SURVEY HORIZONTAL AND VERTICAL CONTROL POINTS					
DESIGNATION	LOCATION	NORTHING	EASTING	DESCRIPTION	ELEVATION
CP 1	BASELINE "A" STA. 11+32.84, 220.22' LT	1227283.44	1003196.84	IRON PIN	746.42
	BASELINE "B" STA. 92+29.78, 917.16' RT				
CP 2	BASELINE "A" STA. 10+99.92, 140.00' LT	1227250.79	1003116.52	IRON PIN	-
	BASELINE "B" STA. 93+10.00, 960.08' RT				
CP 3	BASELINE "A" STA. 14+09.76, 39.77' RT	1226903.68	1003205.03	IRON PIN	745.18
	BASELINE "B" STA. 94+89.77, 640.24' RT				
CP 4	BASELINE "A" STA. 14+14.81, 413.11' RT	1226638.87	1002941.80	IRON PIN	744.50
	BASELINE "B" STA. 98+63.11, 635.39' RT				
CP 5	BASELINE "A" STA. 16+90.23, 40.13' RT	1226703.14	1003401.10	IRON PIN	744.84
	BASELINE "B" STA. 94+90.13, 359.77' RT				
CP 6	BASELINE "A" STA. 19+84.18, 220.04' LT	1226675.34	1003792.67	IRON PIN	746.85
	BASELINE "B" STA. 92+29.96, 65.82' RT				
CP 7	BASELINE "A" STA. 20+00.09, 139.77' LT	1226607.79	1003746.48	IRON PIN	-
	BASELINE "B" STA. 93+10.23, 49.91' RT				
CP 8	BASELINE "A" STA. 21+17.02, 406.86' RT	1226141.64	1003437.97	IRON PIN	745.48
	BASELINE "B" STA. 98+56.86, 67.02' LT				

- NOTES:**
- CONTRACTOR TO VERIFY HORIZONTAL AND VERTICAL CONTROL POINTS PRIOR TO STARTING WORK.
  - DISCREPANCIES IN THE CONTROL POINTS ARE TO BE BROUGHT TO THE ATTENTION OF THE RESIDENT ENGINEER AS SOON AS THEY ARE DISCOVERED. NEW CONTROL POINTS, IF REQUIRED, WILL BE SET BY THE ENGINEER.