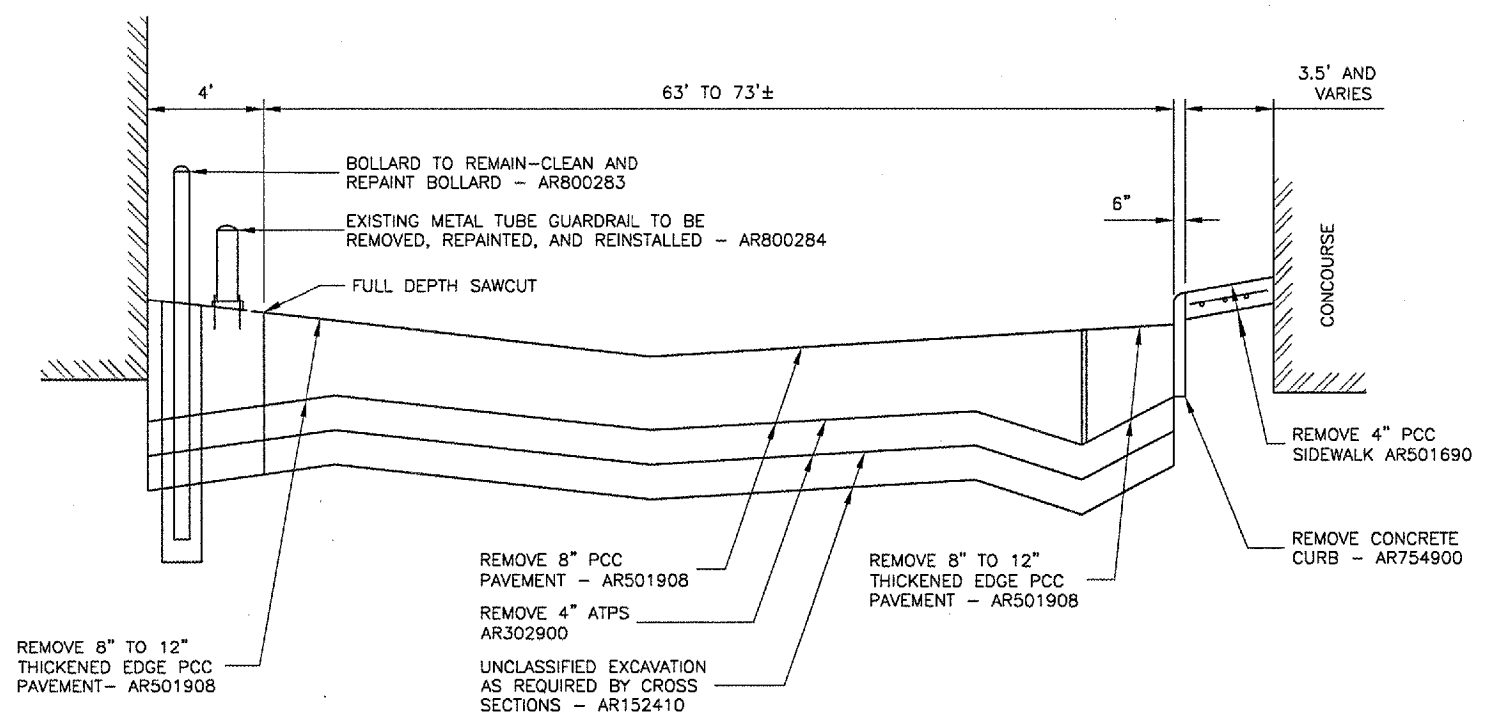
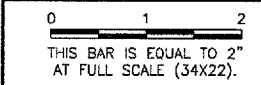
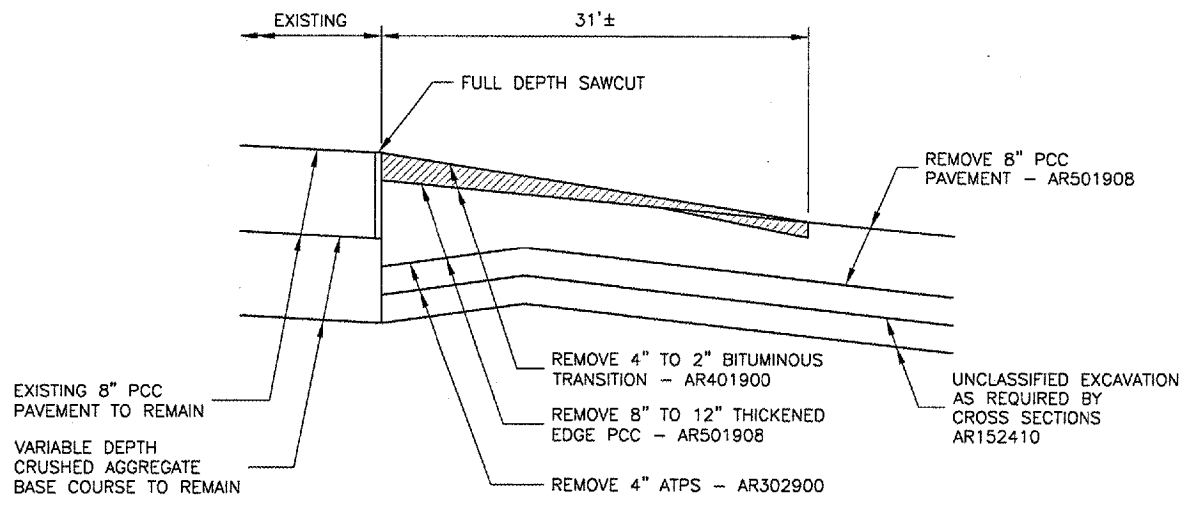


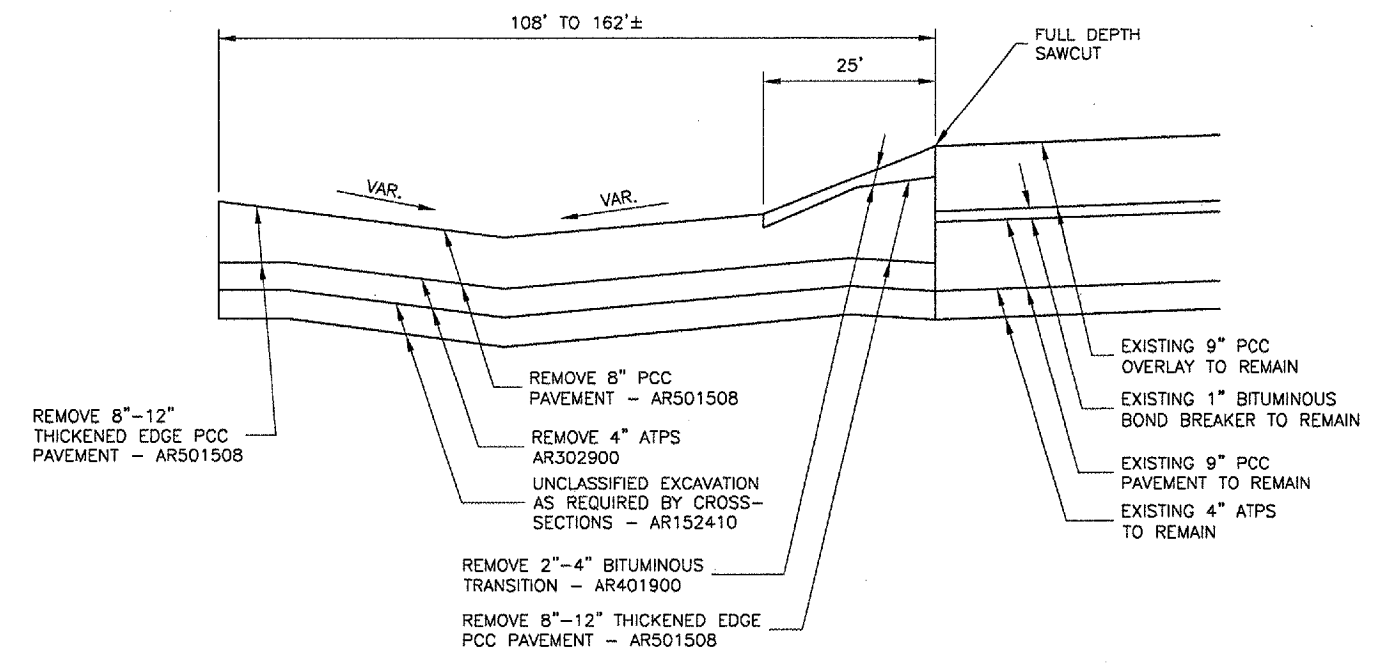
REVISIONS		
NUMBER	BY	DATE



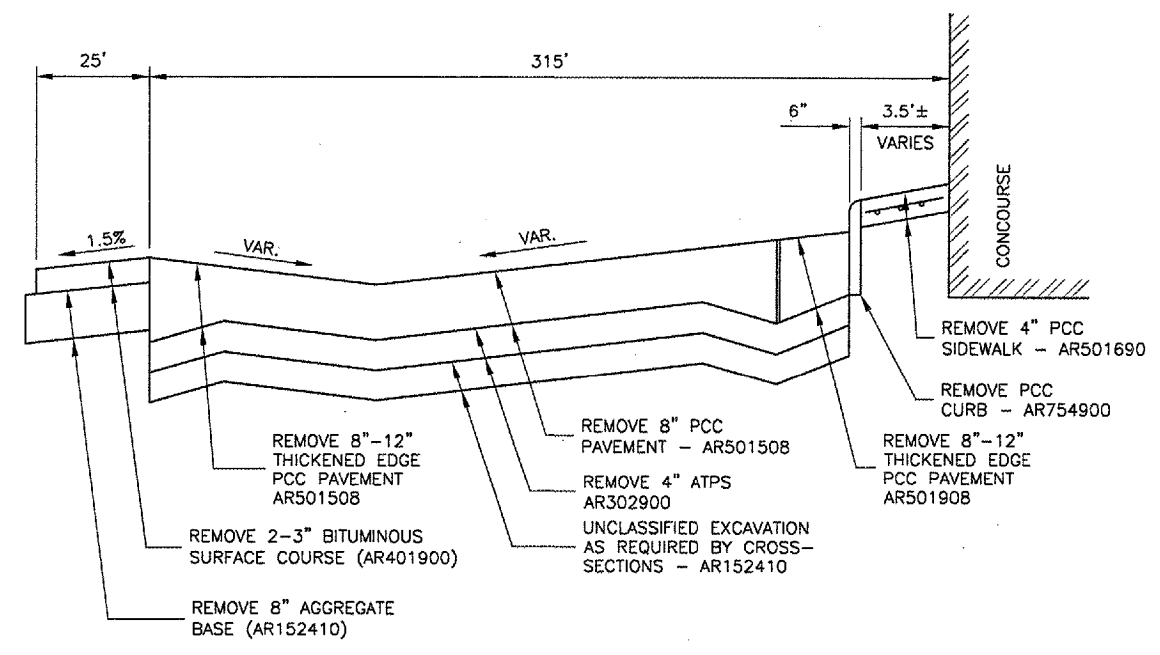
REMOVAL SECTION - SERVICE PAVEMENT (AA)
 N.T.S.



REMOVAL SECTION - SERVICE PAVEMENT (BB)
 N.T.S.



REMOVAL SECTION - COMMUTER APRON (CC)
 N.T.S.



REMOVAL SECTION - COMMUTER APRON (DD)
 N.T.S.

UNIVERSITY OF ILLINOIS
 WILLARD AIRPORT
 REHABILITATE AIR CARRIER RAMP, PHASE 2
 PAVEMENT REMOVAL DETAILS SHEET 1

© Copyright CMT, Inc.
CMT
 CRAWFORD MURPHY & TILLY, INC.
 CONSULTING ENGINEERS
 License No. 184-000618

DESIGN BY: SMS
 DRAWN BY: CMT
 CHECKED BY: *SMS*
 APPROVED BY: *SMS*
 DATE: 4/27/2007

JOB No: 0305903

CMI-3663
 3-17-0016-XX