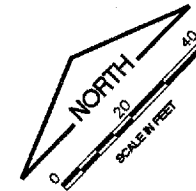


K:\Champaign\030590302 Apron Rehab 2\Draw\5  
 FILE: MARKPLAN2.dwg  
 UPDATE BY: Sean Smith  
 PLOT DATE: 4/28/2007 4:10 PM  
 Mark-P  
 ProjImprovements  
 baselines  
 CMIBaseEOP0EL

REVISIONS		
NUMBER	BY	DATE

0 1 2  
 THIS BAR IS EQUAL TO 2"  
 AT FULL SCALE (34X22).



MAIN TERMINAL

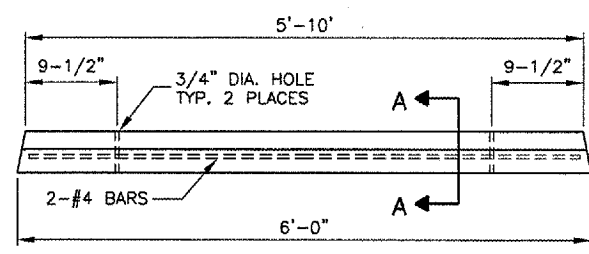
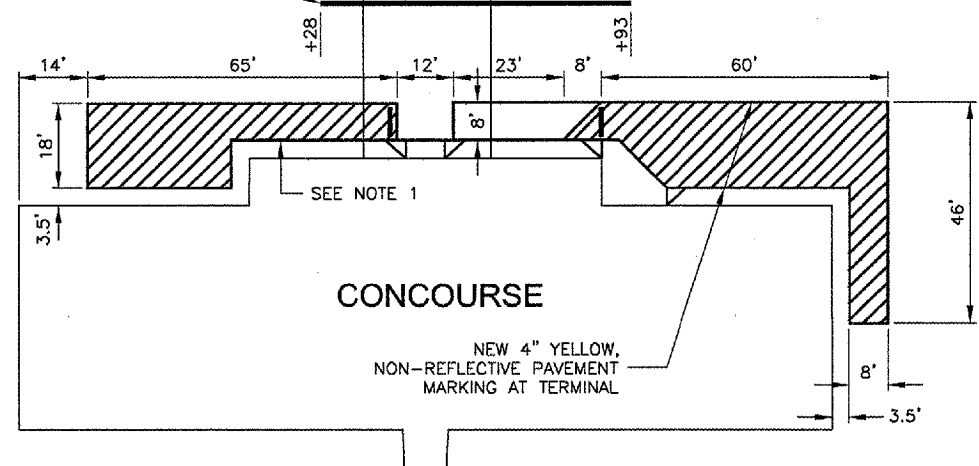
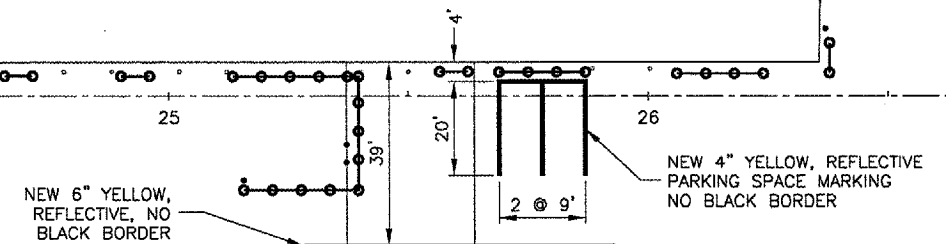
LEGEND

- NEW PAVEMENT MARKING
- NEW WHEEL STOP

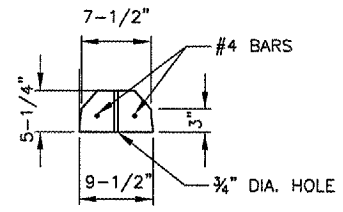
NOTES:

1. MARK TOP AND FACE OF NEW CURB ALONG NORTH SIDE OF CONCOURSE. GAPS WILL BE LEFT AT THE SIDEWALK RAMPS.
2. CONTRACTOR TO PROTECT TERMINAL BUILDINGS FROM PAINT SPRAY. PAINT SPRAYED ONTO BUILDINGS WILL BE CLEANED AT THE CONTRACTOR'S EXPENSE.
3. SEE MARKING AND GROUND ROD PLAN FOR APRON AND AIRFIELD MARKING.

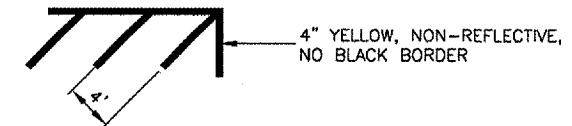
24' TO CTR. 7 SPACES @ 10' = 70' CENTER SPACED



PRECAST WHEEL STOP  
 N.T.S.



SECTION A-A  
 N.T.S.



PAVEMENT MARKING AT TERMINAL  
 N.T.S.

UNIVERSITY OF ILLINOIS  
 WILLARD AIRPORT  
 REHABILITATE AIR CARRIER RAMP, PHASE 2  
 TERMINAL AREA MARKING PLAN  
 AND WHEEL STOP LAYOUT

© Copyright CMT, Inc.  
**CMT**  
 CRAWFORD, MURPHY & TILLY, INC.  
 CONSULTING ENGINEERS  
 License No. 184-000613

DESIGN BY: SMS  
 DRAWN BY: DPA  
 CHECKED BY: *SMB*  
 APPROVED BY: *SMB*  
 DATE: 4/27/2007  
 JOB No: 0305903

CMI-3663  
 3-17-0016-XX  
 SHEET 34 OF 49 SHEETS