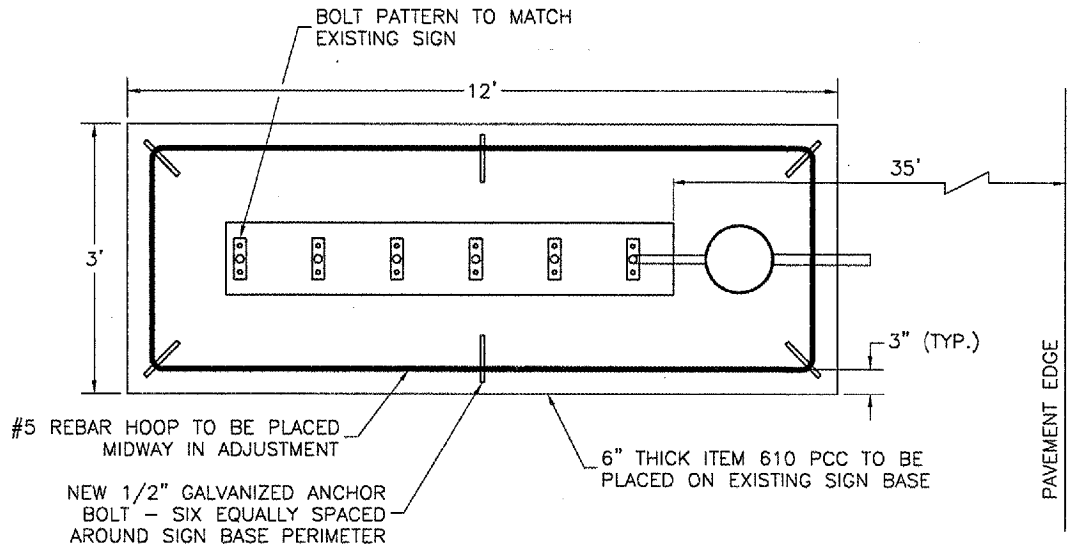
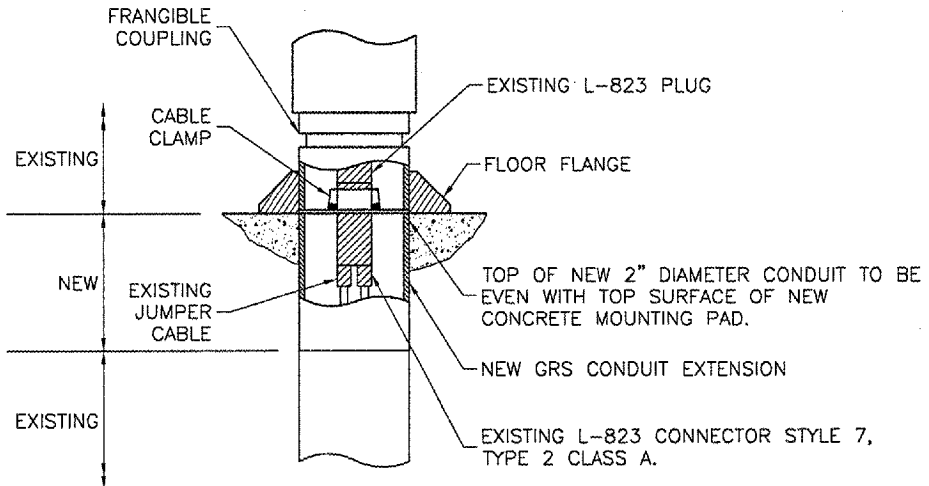


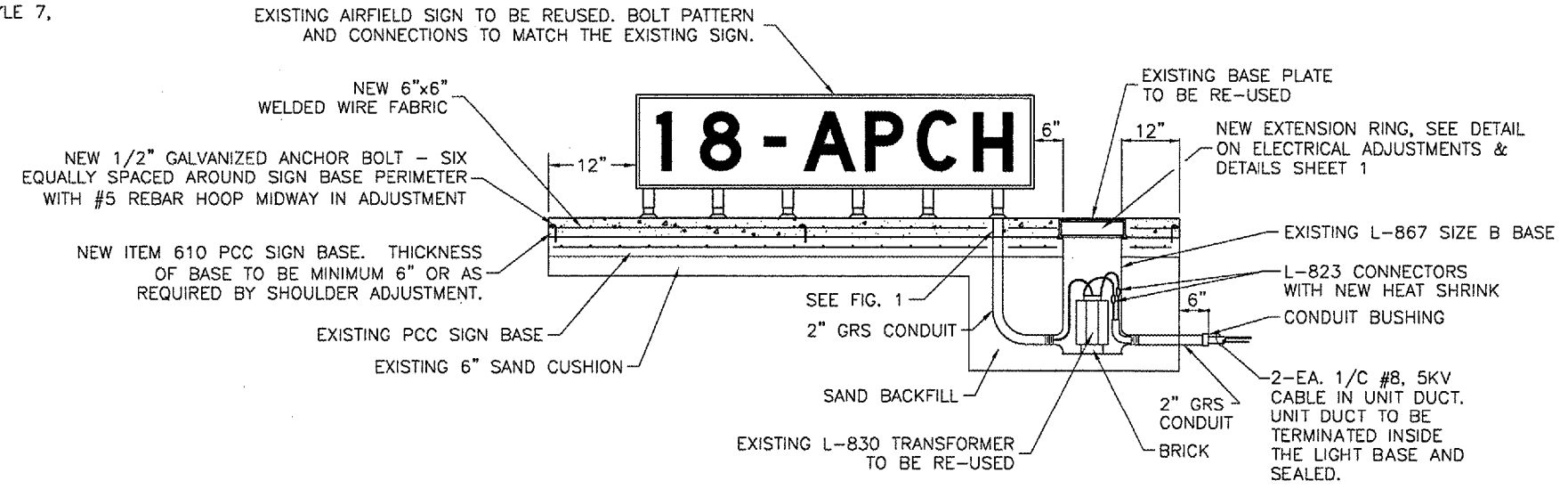
ELEVATION VIEW  
 NOT TO SCALE



PLAN VIEW  
 NOT TO SCALE



ELECTRICAL CONNECTION DETAIL  
 FIGURE 1

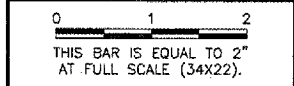


ELEVATION VIEW  
 NOT TO SCALE

NEW ADJUSTED EXISTING AIRFIELD GUIDANCE SIGN DETAIL  
 NOT TO SCALE

- NOTES FOR ADJUSTED SIGN
1. THE EXISTING AIRFIELD GUIDANCE SIGN AND LEGEND IS TO BE REMOVED, PRESERVED AND RE-USED AT THE EXISTING SIGN LOCATION.
  2. THE ADJUSTED SIGN WILL BE REMOUNTED ON THE CONCRETE BASE (ITEM 610) AFTER THE BASE HAS BEEN VERTICALLY ADJUSTED. THE SIGN BASE ADJUSTMENT WILL INCLUDE THE 6-INCH MINIMUM CONCRETE SLAB POURED IN-PLACE ON TOP OF THE EXISTING SIGN BASE WITH WIRE FABRIC, ANCHOR BOLTS AND REBAR HOOP, 2-INCH DIAMETER GRS CONDUIT EXTENSION, L-867 BASE EXTENSION RING AND HEAT SHRINK.
  3. THE ADJUSTED SIGN WILL RE-USE THE EXISTING TRANSFORMER AND 3/8" STEEL COVER WITH GASKET.
  4. THE CONTRACTOR MUST REPLACE IN KIND ANY MOUNTING HARDWARE DAMAGED BY THE ADJUSTMENT PROCESS.

| REVISIONS |    |      |
|-----------|----|------|
| NUMBER    | BY | DATE |
|           |    |      |
|           |    |      |
|           |    |      |



UNIVERSITY OF ILLINOIS  
 WILLARD AIRPORT

REHABILITATE AIR CARRIER RAMP, PHASE 2

ELECTRICAL ADJUSTMENTS & DETAILS  
 SHEET 2

© Copyright CMT, Inc.

**CMT**  
 CRAWFORD, MURPHY & TILLY, INC.  
 CONSULTING ENGINEERS  
 License No. 184-000813

DESIGN BY: ----

DRAWN BY: ----

CHECKED BY: *smg*

APPROVED BY: *smg*

DATE: 4/27/2007

JOB No: 0305903