

03A

WHITESIDE COUNTY AIRPORT BOARD WHITESIDE COUNTY, ILLINOIS

WH006 TOTAL
SHEETS: 25

Whiteside County **AIRPORT**
JOSEPH H. BITTORF FIELD

WHITESIDE COUNTY AIRPORT BOARD

APPROVED BY _____
JACK CASSENS, CHAIRMAN

DATE _____ APRIL 20, 2007

CONSTRUCTION PLANS FOR WHITESIDE COUNTY AIRPORT

RECABLE AIRFIELD (RUNWAY 7/25 AND PARALLEL / CONNECTING TAXIWAYS A,C, AND D WEST OF RUNWAY 18/36)

BASE BID

GENERAL

1. COVER SHEET (CVR1)
2. SUMMARY OF QUANTITIES (QTY1)
3. SITE PLAN (SPL1)
4. CONSTRUCTION PHASING PLAN (CPP1)
- 5-6. CONSTRUCTION PHASING STAGES 1-2 (CPS1-2)
7. ELECTRICAL SITE PLAN 1 TAXIWAYS A, C AND D (ESP1)
- 8-9. ELECTRICAL PLAN 1-2 TAXIWAYS A, C AND D (ELP1-2)
- 10-11. ELECTRICAL DETAILS 1-2 TAXIWAYS A, C AND D (EDT1-2)
12. ELECTRICAL SITE PLAN 1 RUNWAY 7/25 (ESR1)
- 13-17. ELECTRICAL PLAN 1-5 RUNWAY 7/25 (ERP1-5)
18. ELECTRICAL DETAILS 1 RUNWAY 7/25 (EDR1)
19. VAULT HOMERUN SITE PLAN (VHP1)
20. VAULT HOMERUN DETAILS (VHD1)

VAULT

21. VAULT MODIFICATIONS PLAN (VMP1)
- 22-23. VAULT MODIFICATIONS DETAILS 1-2 (VDT 1-2)

ADDITIVE ALTERNATE NO. 1

REILS

24. REIL INSTALLATION PLAN - RUNWAYS 18 AND 36 (RIP-1)
25. REIL INSTALLATION DETAILS - RUNWAYS 18 AND 36 (RID-1)

DESIGN INFORMATION

TOWNSHIP: 20 NORTH COUNTY: WHITESIDE
RANGE: 7 EAST MONTMORENCY TOWNSHIP
SECTION: 10

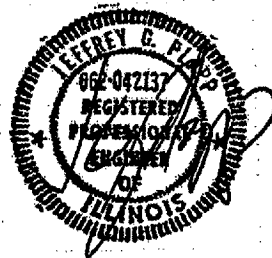
AIRPLANE DESIGN GROUP B2 PAVEMENT DESIGN:
45,000 LBS. DUAL (TERM. APRON) PAVEMENT DESIGN:
12,500 LBS. SINGLE (RWY 18/36) (MAXIMUM
EQUIPMENT HEIGHT = 25)



CALL J.U.L.I.E BEFORE
EXCAVATING
1-800-892-0123

Illinois Professional Engineering Practice Act of 1989

CMT
http://www.cmtengr.com
Springfield, Illinois
Aurora, Illinois
Rockford, Illinois
St. Louis, Mo.



SUBMITTED BY _____
JEFFREY G. PLAPP, P.E.

DATE _____ APRIL 20, 2007
license expires 11-30-2007

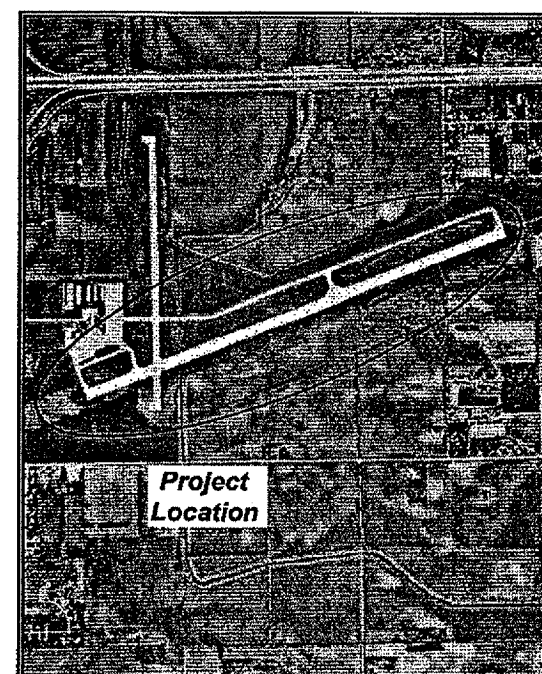
FINAL SUBMITTAL

ILLINOIS PROJECT: SQI-3694
A.I.P. PROJECT: 3-17-0098-BXX

APRIL 20, 2007
(JUNE 15, 2007 LETTING)



LOCATION MAP



SITE PLAN

06292-03-00/06