

WH006



Whiteside County **AIRPORT**
JOSEPH H. BITTORF FIELD

Whiteside County
Airport

Sterling / Rock Falls,
Illinois

Whiteside County
Airport

AIP: 3-17-0098-XX
SQI-3694

Recable Airfield

**FINAL
SUBMITTAL**

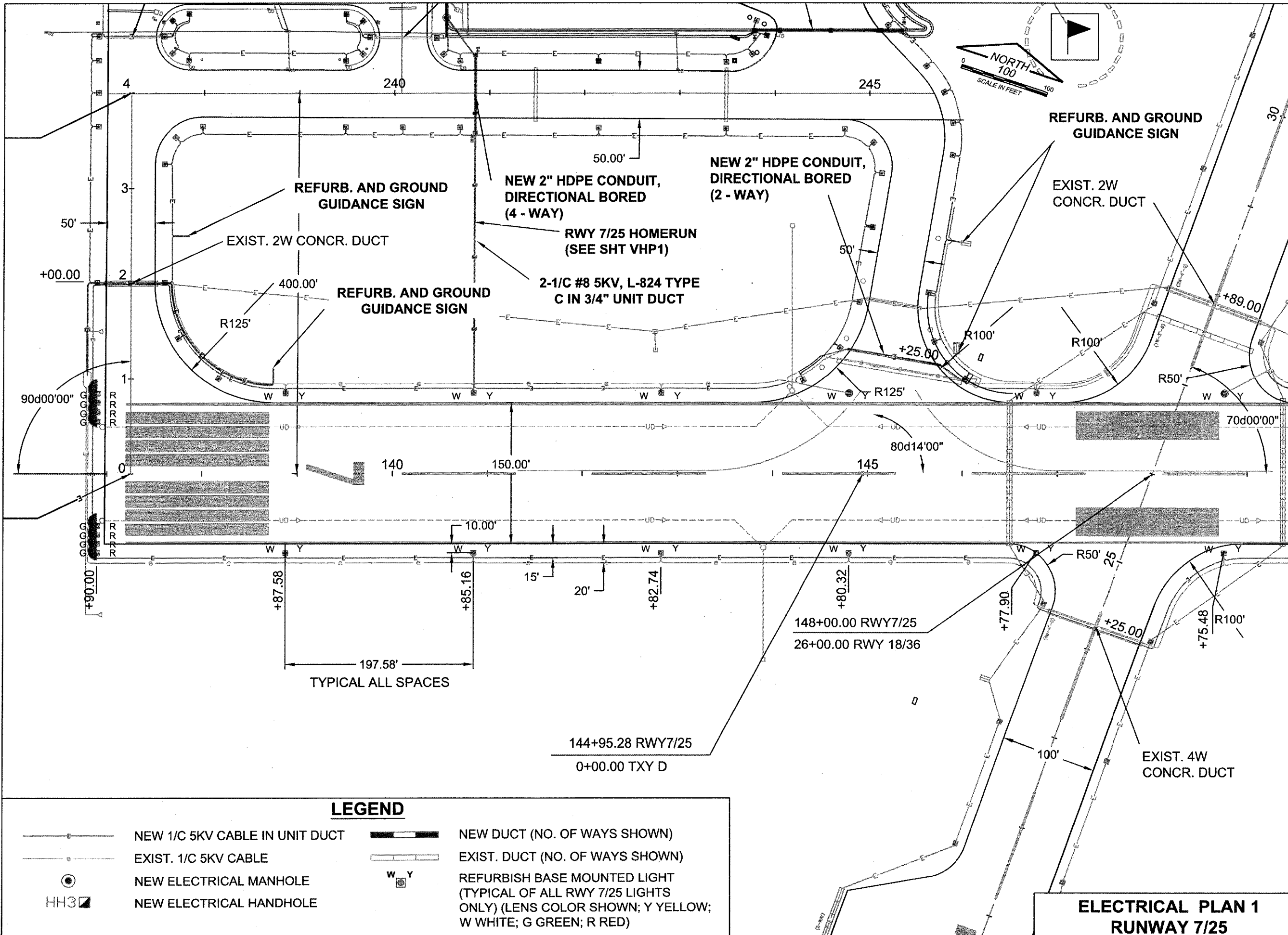
Revisions		
No.	Date	Description

0 1
THIS BAR IS EQUAL TO 1"
AT FULL SCALE (17 X 11)

DESIGN BY:	CMT- RFD
DRAWN BY:	CMT- RFD
CHECKED BY:	CMT- RFD
APPROVED BY:	JGP
DATE:	4.20.2007
JOB No:	06292-03-00

**ELECTRICAL
PLAN 1
RUNWAY 7/25
(ERP1)**

13
SHEET 13 OF 25 SHEETS



LEGEND

- NEW 1/2 5KV CABLE IN UNIT DUCT
- - - EXIST. 1/2 5KV CABLE
- ⊙ NEW ELECTRICAL MANHOLE
- NEW ELECTRICAL HANDHOLE
- NEW DUCT (NO. OF WAYS SHOWN)
- - - EXIST. DUCT (NO. OF WAYS SHOWN)
- W Y REFURBISH BASE MOUNTED LIGHT (TYPICAL OF ALL RWY 7/25 LIGHTS ONLY) (LENS COLOR SHOWN; Y YELLOW; W WHITE; G GREEN; R RED)

**ELECTRICAL PLAN 1
RUNWAY 7/25**