

WH006



CRAWFORD, MURPHY & TILLY, INC.
CONSULTING ENGINEERS

Whiteside County **AIRPORT**
JOSEPH H. BITTORF FIELD

Whiteside County
Airport

Sterling / Rock Falls,
Illinois

Whiteside County
Airport

AIP: 3-17-0098-XX
SQI-3694

Recable Airfield

**FINAL
SUBMITTAL**

Revisions

No.	Date	Description

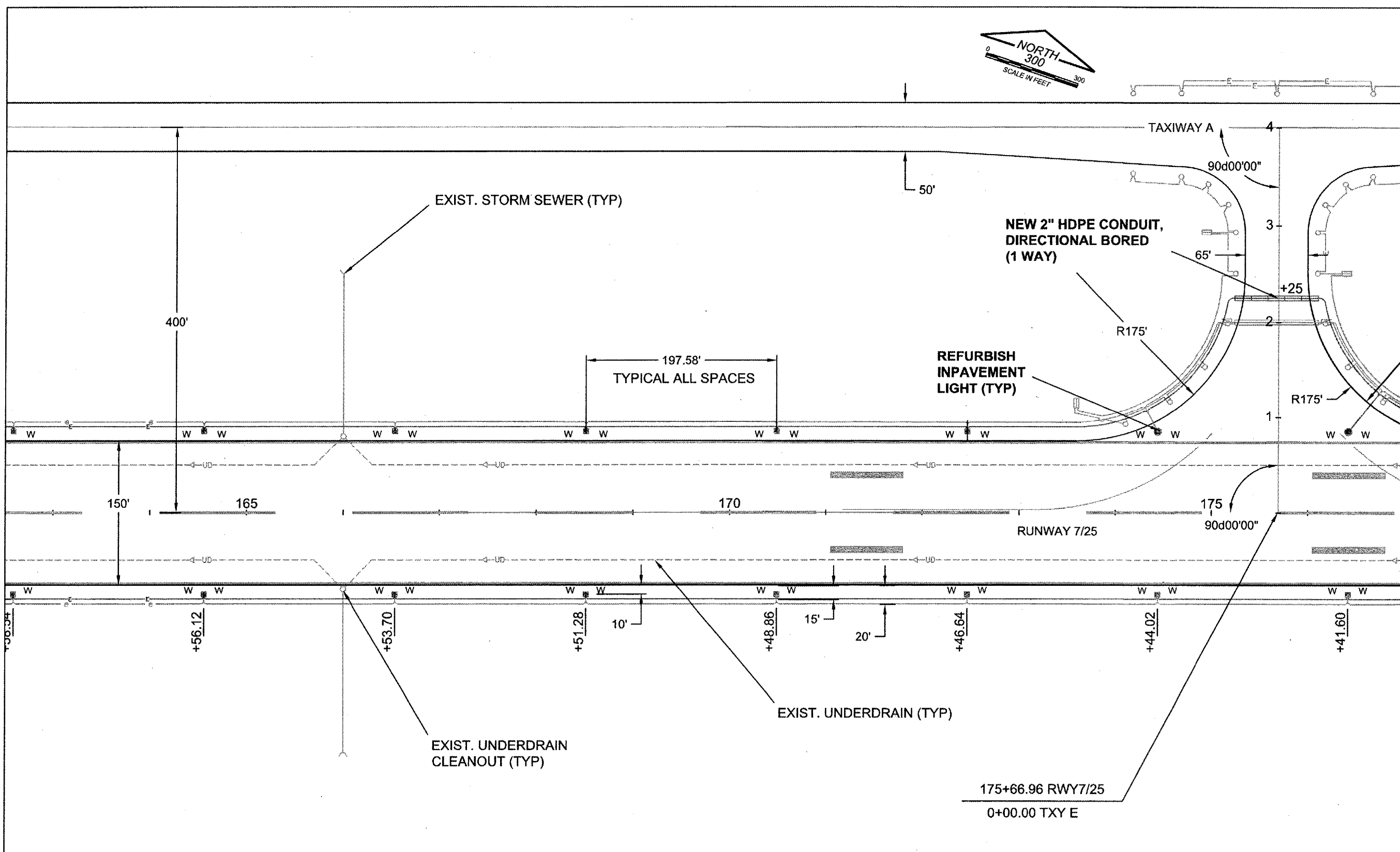
0 1
THIS BAR IS EQUAL TO 1"
AT FULL SCALE (17 X 11).

DESIGN BY: CMT-RFD
 DRAWN BY: CMT-RFD
 CHECKED BY: CMT-RFD
 APPROVED BY: JGP
 DATE: 4.20.2007
 JOB No: 06292-03-00

**ELECTRICAL
PLAN 3
RUNWAY 7/25
(ERP3)**

15

SHEET 15 OF 27 SHEETS



LEGEND

- NEW 1/2 5KV CABLE IN UNIT DUCT
- EXIST. 1/2 5KV CABLE
- NEW ELECTRICAL MANHOLE
- NEW ELECTRICAL HANDHOLE
- NEW DUCT (NO. OF WAYS SHOWN)
- EXIST. DUCT (NO. OF WAYS SHOWN)
- W Y REFURBISH BASE MOUNTED LIGHT (TYPICAL OF ALL RWY 7/25 LIGHTS ONLY) (LENS COLOR SHOWN; Y YELLOW; W WHITE; G GREEN; R RED)

**ELECTRICAL PLAN 3
RUNWAY 7/25**