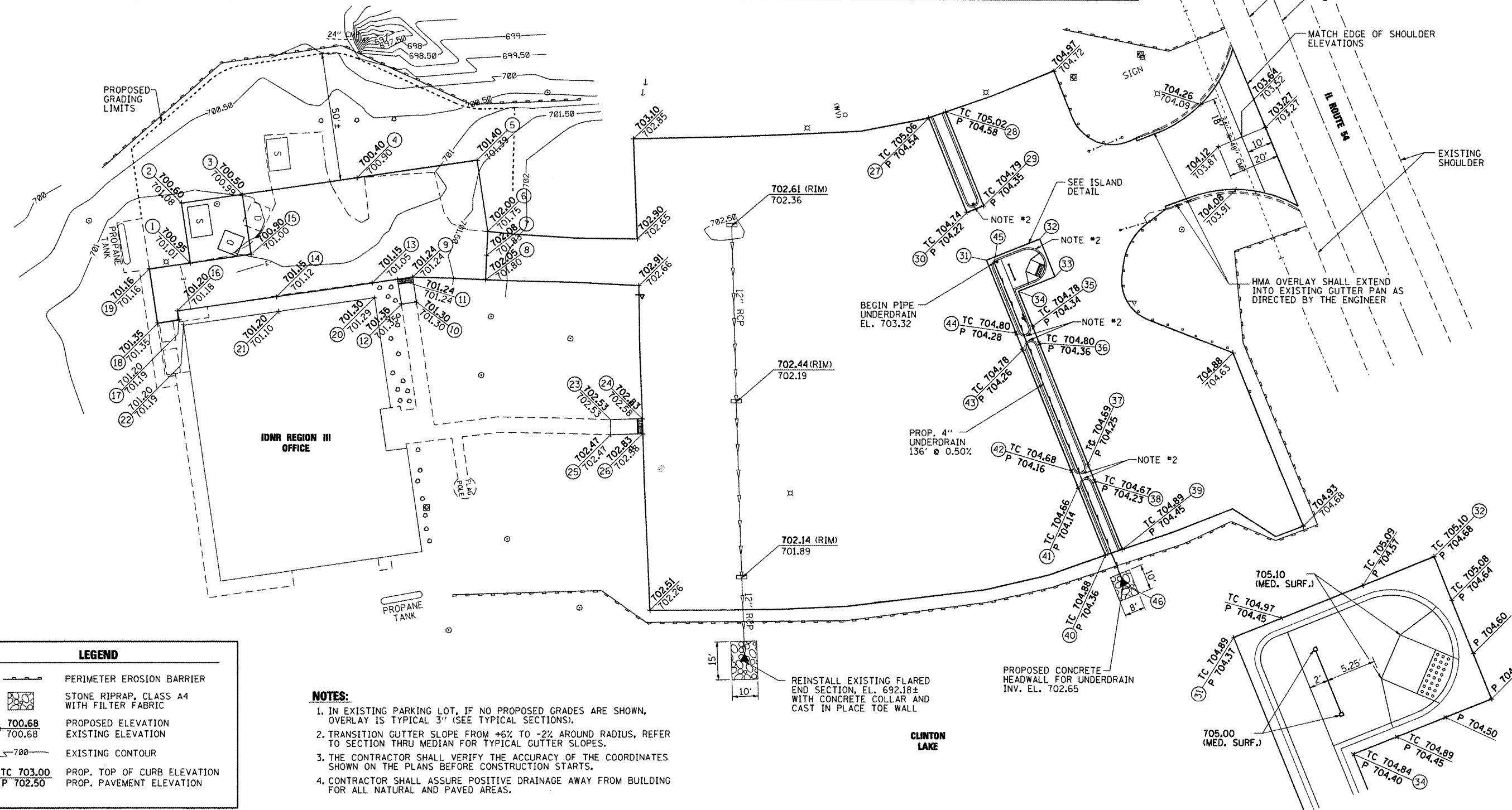
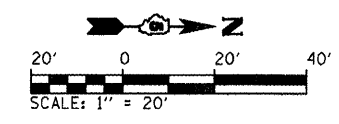


COORDINATE LISTING			
POINT NO.	NORTHING	EASTING	DESCRIPTION
1	1281409.125	2665651.829	EOP
2	1281405.656	2665628.081	EOP
3	1281429.403	2665624.611	EOP
4	1281473.931	2665618.106	EOP
5	1281520.437	2665611.311	EOP
6	1281524.538	2665639.381	EOP
7	1281524.114	2665648.909	EOP
8	1281523.690	2665658.437	EOP
9	1281495.524	2665657.413	EOP/SW
10	1281496.965	2665667.293	SW
11	1281489.646	2665658.246	EOP/SW
12	1281491.150	2665668.065	SW

COORDINATE LISTING			
POINT NO.	NORTHING	EASTING	DESCRIPTION
13	1281479.826	2665659.690	EOP
14	1281442.708	2665665.113	EOP
15	1281432.873	2665648.359	EOP
16	1281404.023	2665670.765	EOP
17	1281404.641	2665674.304	EOP
18	1281396.370	2665675.598	EOP
19	1281393.061	2665654.287	EOP
20	1281480.678	2665665.580	TURF
21	1281443.555	2665670.959	TURF
22	1281406.432	2665676.337	TURF
23	1281572.252	2665713.236	SW
24	1281584.545	2665712.853	EOP/SW

COORDINATE LISTING			
POINT NO.	NORTHING	EASTING	DESCRIPTION
25	1281572.306	2665719.108	SW
26	1281584.707	2665718.712	EOP/SW
27	1281695.857	2665594.615	EOP
28	1281702.462	2665592.277	EOP
29	1281717.250	2665628.979	EOP
30	1281710.758	2665631.595	EOP
31	1281718.399	2665650.559	EOP
32	1281739.269	2665642.150	EOP
33	1281745.249	2665656.990	EOP
34	1281730.872	2665662.783	EOP
35	1281736.462	2665676.657	EOP
36	1281739.079	2665683.150	EOP

COORDINATE LISTING			
POINT NO.	NORTHING	EASTING	DESCRIPTION
37	1281758.147	2665730.473	EOP
38	1281760.763	2665736.965	EOP
39	1281771.604	2665763.868	EOP
40	1281764.988	2665766.178	EOP
41	1281754.271	2665739.582	EOP
42	1281751.654	2665733.089	EOP
43	1281732.586	2665685.766	EOP
44	1281729.970	2665679.273	EOP
45	1281721.505	2665651.577	UNDERDRAIN
46	1281772.336	2665777.726	UNDERDRAIN



- NOTES:**
1. IN EXISTING PARKING LOT, IF NO PROPOSED GRADES ARE SHOWN, OVERLAY IS TYPICAL 3" (SEE TYPICAL SECTIONS).
  2. TRANSITION GUTTER SLOPE FROM +6% TO -2% AROUND RADIUS, REFER TO SECTION THRU MEDIAN FOR TYPICAL GUTTER SLOPES.
  3. THE CONTRACTOR SHALL VERIFY THE ACCURACY OF THE COORDINATES SHOWN ON THE PLANS BEFORE CONSTRUCTION STARTS.
  4. CONTRACTOR SHALL ASSURE POSITIVE DRAINAGE AWAY FROM BUILDING FOR ALL NATURAL AND PAVED AREAS.

LEGEND	
	PERIMETER EROSION BARRIER
	STONE RIPRAP, CLASS A4 WITH FILTER FABRIC
	700.68 PROPOSED ELEVATION
	700.68 EXISTING ELEVATION
	700 EXISTING CONTOUR
	TC 703.00 PROP. TOP OF CURB ELEVATION
	P 702.50 PROP. PAVEMENT ELEVATION

FILE NAME = L:\DOT\118661\0\W\2\Draw\CADD_Sheets\08	USER NAME = Kristin Timmons	DESIGNED - KLT	REVISED -	<b>STATE OF ILLINOIS DEPARTMENT OF TRANSPORTATION</b>	<b>GRADING &amp; STAKING PLAN IDNR REGION III OFFICE - CLINTON</b>	F.A. RTE. N/A	SECTION PARK ROADS	COUNTY DEWITT	TOTAL SHEETS 13	SHEET NO. 8	
PLOT SCALE = 40,0000 / IN.	CHECKED - SPH	REVISED -	SCALE: 1" = 20'			SHEET NO. 8 OF 13 SHEETS	STA. TO STA.	ILLINOIS FED. AID PROJECT			
PLOT DATE = 4/6/2012	DATE - 4/6/2012	REVISED -	CONTRACT NO. 46210								