

INDEX OF SHEETS

- 1 COVER SHEET
- 2 GENERAL NOTES
- 3-4 SUMMARY OF QUANTITIES
- 5 TYPICAL SECTIONS AND PAVEMENT STRUCTURE DETAILS
- 6 SURVEY CONTROL, TIES AND BENCHMARKS
- 7 SITE PLAN
- 8 GRADING AND STAKING PLAN
- 9 LIGHTING AND ELECTRICAL PLAN
- 10 ELECTRICAL DETAILS
- 11 CONSTRUCTION STAGING PLAN
- 12 PAVEMENT MARKING / SIGNING PLAN
- 13 MISCELLANEOUS CONSTRUCTION DETAILS

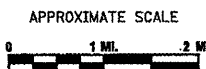
HIGHWAY STANDARDS

- 000001-06 STANDARD SYMBOLS, ABBREVIATIONS AND PATTERNS
- 001006 DECIMAL OF AN INCH AND OF A FOOT
- 280001-06 TEMPORARY EROSION CONTROL SYSTEMS
- 424006 DIAGONAL CURB RAMPS FOR SIDEWALKS
- 424026 ENTRANCE/ALLEY PEDESTRIAN CROSSINGS
- 542301-03 PRECAST REINFORCED CONCRETE FLARED END SECTION
- 601001-04 SUB-SURFACE DRAINS
- 601101-01 CONCRETE HEADWALL FOR PIPE DRAINS
- 606001-04 CONCRETE CURB TYPE B AND COMBINATION CONCRETE CURB AND GUTTER
- 606301-04 PC CONCRETE ISLANDS AND MEDIANS
- 664001-02 CHAIN LINK FENCE
- 701006-03 OFF-ROAD OPERATIONS, 2L, 2W, 15' TO 24" FROM PAVEMENT EDGE
- 701901-02 TRAFFIC CONTROL DEVICES
- 720001-01 SIGN PANEL MOUNTING DETAILS
- 720006-03 SIGN PANEL ERECTION DETAILS
- 729001-01 APPLICATIONS OF TYPES A AND B METAL POSTS
- 780001-03 TYPICAL PAVEMENT MARKINGS
- 830001 LIGHT POLE ALUMINUM MAST ARM

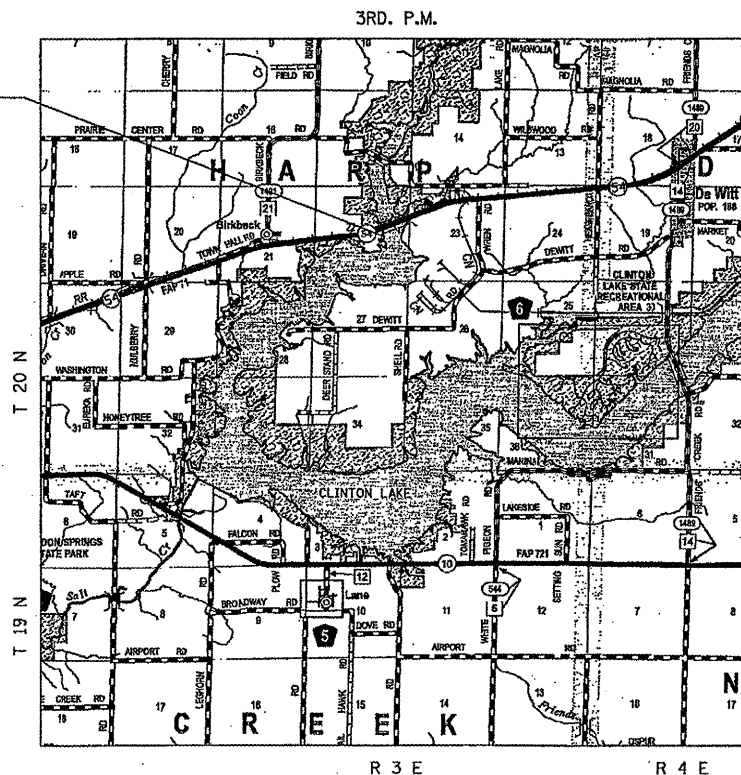
PROJECT DESCRIPTION

THE PROPOSED PROJECT CONSISTS OF PARKING LOT AND SITE IMPROVEMENTS AT THE IDNR REGION III OFFICE FACILITY. THE IMPROVEMENTS CONSIST OF A HOT-MIX ASPHALT OVERLAY, A NEW PARKING SEPARATION BARRIER TO DISTINGUISH BETWEEN AN OFFICE FACILITY PARKING LOT AND AN ADJACENT FISHING PARKING LOT, IMPROVED PARKING SPACE LAYOUT, EXPANSION OF THE EMPLOYEE PARKING AREA, AND DRAINAGE AND LIGHTING IMPROVEMENTS.

(SURVEY CONTROL, TIES, AND BENCHMARKS)
 (SITE PLAN)
 (GRADING AND STAKING PLAN)
 (LIGHTING PLAN)
 (CONSTRUCTION STAGING)
 (PAVEMENT MARKING/SIGNING PLANS)



PROJECT LOCATION



LOCATION MAP

J.U.L.I.E.
 JOINT UTILITY LOCATION INFORMATION FOR EXCAVATION
 1-800-892-0123
 OR 811

PROJECT ENGINEER: LANCE KIDD (217) 785-2933
 CONTRACT NO. 46210

06-15-12 LETTING ITEM 191

STATE OF ILLINOIS

DEPARTMENT OF TRANSPORTATION
 DIVISION OF HIGHWAYS
 IDOT / IDNR STATEWIDE
 IDNR REGION III OFFICE - CLINTON
 SITE IMPROVEMENTS

DEWITT COUNTY

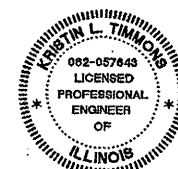
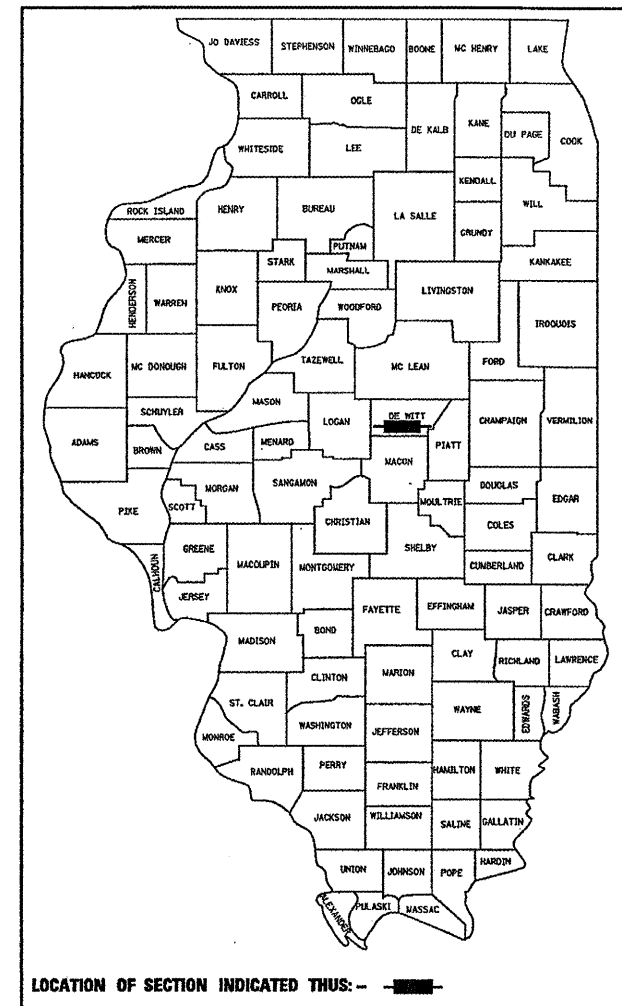
IDOT PROJECT NO.
 IDNR PROJECT NO. 3-08-002

C-30-044-12

SECTION: REGION 3 HEADQUARTERS

F.A.P. RTE.	SECTION	COUNTY	TOTAL SHEETS	SHEET NO.
N/A	PARK ROADS	DEWITT	13	1
FED. ROAD DIST. NO.	ILLINOIS CONTRACT NO. 46210			

P-30-001-12



SEAL

SIGNATURE: *Kurt Turner*
 DATE SIGNED: 4-6-12
 LICENSE EXPIRATION DATE: 11-30-13



STATE OF ILLINOIS
 DEPARTMENT OF TRANSPORTATION
 DIVISION OF HIGHWAYS

SUBMITTED 4-6 20 12
William R. Frey, Jr.
 DEPUTY DIRECTOR OF HIGHWAYS, REGION ENGINEER

May 11 20 12
John D. Baranowski, PE, Jr.
 acting ENGINEER OF DESIGN AND ENVIRONMENT

May 11 20 12
William R. Frey, Jr.
 acting DIRECTOR OF HIGHWAYS, CHIEF ENGINEER

PRINTED BY THE AUTHORITY
 OF THE STATE OF ILLINOIS

GENERAL NOTES:

1. UNLESS MODIFIED BY THE PROJECT SPECIFICATIONS, ALL WORK SHALL BE DONE IN ACCORDANCE WITH THE "STANDARD SPECIFICATIONS FOR ROAD AND BRIDGE CONSTRUCTION", ADOPTED BY THE ILLINOIS DEPARTMENT OF TRANSPORTATION ON JAN. 1, 2012; THE LATEST ADDITION OF THE "MANUAL ON UNIFORM TRAFFIC CONTROL DEVICES FOR STREETS AND HIGHWAYS"; AND THE "SUPPLEMENTAL SPECIFICATIONS AND RECURRING SPECIAL PROVISIONS" ADOPTED JAN. 1, 2012.
2. THE LOCATIONS, SIZE, MATERIAL, DESCRIPTION OR TYPE OF EXISTING UNDERGROUND UTILITIES INDICATED ON THE PLANS ARE APPROXIMATE LOCATIONS BASED ON IN PART, INFORMATION SUPPLIED BY OTHERS AND IS NOT REPRESENTED AS BEING ACCURATE, SUFFICIENT OR COMPLETE. PRIOR TO THE START OF CONSTRUCTION, THE CONTRACTOR SHALL ARRANGE TO HAVE ALL UTILITIES INCLUDING WATER, GAS, ELECTRIC, STORM SEWER, SANITARY SEWER, TELEPHONE, AND CABLE T.V. LOCATED AND SUITABLY MARKED. SHOULD A UTILITY BE IN CONFLICT WITH THE PROPOSED CONSTRUCTION, THE OWNER'S REPRESENTATIVE SHALL BE NOTIFIED AT ONCE. THE CONTRACTOR SHALL AT MINIMUM CONTACT J.U.L.I.E. AT 1-800-892-0123 FOR UTILITY LOCATING.
3. WHERE CLEANING OR PRUNING IS REQUIRED FOR PROPOSED IMPROVEMENTS, IT SHALL BE IN ACCORDANCE WITH SECTION 201 OF THE STANDARD SPECIFICATIONS EXCEPT THAT ANY CLEARING OR PRUNING REQUIRED SHALL BE INCLUDED IN THE UNIT PRICE FOR HMA BINDER COURSE, IL-12.5, N50.
4. THE CONTRACTOR SHALL TAKE REASONABLE PRECAUTIONS TO PROTECT PUBLIC AND PRIVATE PROPERTY. IF AT ANY TIME, HE/SHE DAMAGES OR DESTROYS PUBLIC OR PRIVATE PROPERTY, THE CONTRACTOR SHALL, AT HIS OWN EXPENSE, RESTORE SUCH PROPERTY TO A CONDITION EQUAL TO THAT EXISTING BEFORE SUCH DAMAGE. PUBLIC ROADWAYS, PRIVATE ENTRANCES AND EMPLOYEE ENTRANCES SHALL REMAIN ACCESSIBLE AND FREE OF CONSTRUCTION DEBRIS. ANY MATERIAL TO BE STAGED OR STOCKPILED SHALL BE COORDINATED WITH THE OWNER'S REPRESENTATIVE.
5. WHERE SECTION OR SUB-SECTION CORNERS OR PROPERTY MARKERS ARE ENCOUNTERED THE ENGINEER SHALL BE NOTIFIED BEFORE SUCH MARKERS ARE REMOVED. THE CONTRACTOR SHALL PROTECT AND PRESERVE ALL PROPERTY MARKERS UNTIL AN AUTHORIZED SURVEYOR HAS WITNESSED OR REFERENCED THEIR LOCATION.
6. THE CONTRACTOR SHALL REMOVE EXISTING TOPSOIL AND VEGETATION BENEATH NEW PAVEMENT AND SIDEWALK PRIOR TO PREPARING SUBGRADE AND FILL TO REQUIRED SUBGRADE ELEVATION WITH SUITABLE COMPACTED SITE EXCAVATED MATERIAL.
7. PLAN DIMENSIONS AND DETAILS RELATIVE TO EXISTING PLANS ARE SUBJECT TO NOMINAL CONSTRUCTION VARIATIONS. THE CONTRACTOR SHALL FIELD VERIFY EXISTING DIMENSIONS AND DETAILS AFFECTING NEW CONSTRUCTION AND MAKE NECESSARY APPROVED ADJUSTMENTS PRIOR TO CONSTRUCTION OR ORDERING OF MATERIALS. SUCH VARIATIONS SHALL NOT BE CAUSE FOR ADDITIONAL COMPENSATION FOR A CHANGE IN SCOPE OF WORK; HOWEVER, THE CONTRACTOR WILL BE PAID FOR THE QUANTITY ACTUALLY FURNISHED AT THE UNIT PRICE BID FOR THE WORK.
8. GRADING SHALL BE DONE BY HAND AROUND LIGHT POLES, UTILITY POLES, SIGN POSTS, SHRUBS, TREES OR OTHER NATURAL OR MAN-MADE OBJECTS WHERE SHALLOW FILLS OR CUTS ARE ADJACENT TO THE ITEMS. THIS WORK WILL NOT BE PAID FOR SEPARATELY BUT SHALL BE INCLUDED IN THE CONTRACT UNIT PRICE PER TON FOR HMA BINDER COURSE, IL-12.5, N50, AND NO ADDITIONAL COMPENSATION WILL BE ALLOWED.
9. THE CONTRACTOR SHALL NOTIFY THE ILLINOIS DEPARTMENT OF NATURAL RESOURCES REGION III OFFICE ADMINISTRATOR MS. DEBBIE COMBS AT (217)935-6860 AT LEAST TWO WEEKS IN ADVANCE OF MOVING EQUIPMENT, MATERIALS, OR WORK FORCES TO THE SITE.
10. AT ALL LOCATIONS WHERE THE PROPOSED HOT-MIX ASPHALT OR CONCRETE PAVEMENT JOINS AN EXISTING HOT-MIX ASPHALT OR CONCRETE PAVEMENT, A FULL DEPTH SAW JOINT SHALL BE CONSTRUCTED. THE COST OF THIS JOINT WILL BE INCLUDED IN THE COST OF THE TYPE OF PAVEMENT TO BE CONSTRUCTED.
11. THE FOLLOWING RATES OF APPLICATION HAVE BEEN USED IN CALCULATING PLAN QUANTITIES:

HOT MIX ASPHALT PAVEMENT: 112 LBS/SY/IN

BITUMINOUS MATERIALS:
 PRIME COAT-ON PAVEMENT: 0.08 GAL/SY
 PRIME COAT-ON AGGREGATE: 0.25 GAL/SY

MIXTURE REQUIREMENTS

LOCATION	LEVEL BINDER	BINDER	SURFACE
MIXTURE USE	PG 64-22	PG 64-22	PG 64-22
AC/PG:	PG 64-22	PG 64-22	PG 64-22
RAP % (MAX)	25	25	15
DESIGN AIR VOIDS:	4.0% @ Ndesign = 50	4.0% @ Ndesign = 50	4.0% @ Ndesign = 50
MIXTURE COMPOSITION: (GRADATION MIXTURE)	IL 9.5	IL 19.0	IL 9.5
FRICTION AGGREGATE:	MIX "C"	N/A	MIX "C"

FILE NAME =	USER NAME = Kristin Timmons	DESIGNED - KLT	REVISED -	STATE OF ILLINOIS DEPARTMENT OF TRANSPORTATION	GENERAL NOTES IDNR REGION III OFFICE - CLINTON			F.A. RTE.	SECTION	COUNTY	TOTAL SHEETS	SHEET NO.
L:\IDOT\1106610\WD_2\DR\ADD_Sheets\002_GEN_NOTES.dgn	DRAWN - GLD	REVISED -			N/A	PARK ROADS	DEWITT	13	2			
PLOT SCALE = 40,0000' / IN.	CHECKED - SPH	REVISED -			CONTRACT NO. 46210							
PLOT DATE = 4/6/2012	DATE - 4/6/2012	REVISED -			ILLINOIS FED. AID PROJECT							
				SCALE: N/A	SHEET NO. 2 OF 13 SHEETS	STA.	TO STA.					

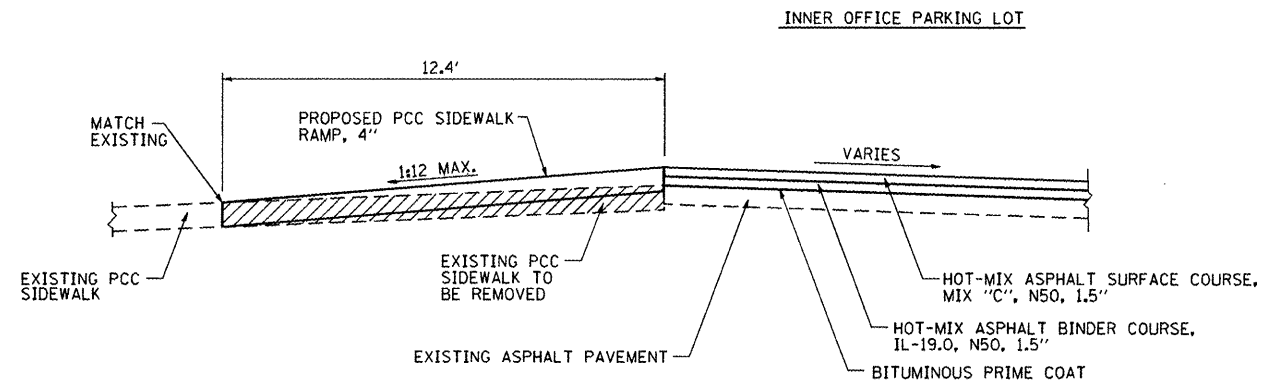
100% STATE

SUMMARY OF QUANTITIES		CONSTRUCTION CODE	
		0005	
CODE NO.	ITEM DESCRIPTION	UNIT	TOTAL QUANTITY
20700220	POROUS GRANULAR EMBANKMENT	CU YD	15
28000400	PERIMETER EROSION BARRIER	FOOT	764
28000500	INLET AND PIPE PROTECTION	EACH	2
28100107	STONE RIPRAP, CLASS A4	SO YD	26
28200200	FILTER FABRIC	SO YD	26
35100700	AGGREGATE BASE COURSE, TYPE A 8"	SO YD	520
40600100	BITUMINOUS MATERIALS (PRIME COAT)	GALLON	495
40600625	LEVELING BINDER (MACHINE METHOD), N50	TON	50
40600982	HOT-MIX ASPHALT SURFACE REMOVAL - BUTT JOINT	SO YD	63
40603080	BINDER COURSE, IL-19.0, N50 ↑ HOT-MIX ASPHALT	TON	515
40603310	SURFACE COURSE, MIX "C", N50 ↑ HOT-MIX ASPHALT	TON	427
42300400	DRIVEWAY PAVEMENT, 8 INCH ↑ PORTLAND CEMENT CONCRETE	SO YD	64
42400100	PORTLAND CEMENT CONCRETE SIDEWALK 4 INCH	SO FT	190
42400800	DETECTABLE WARNING	SO FT	36

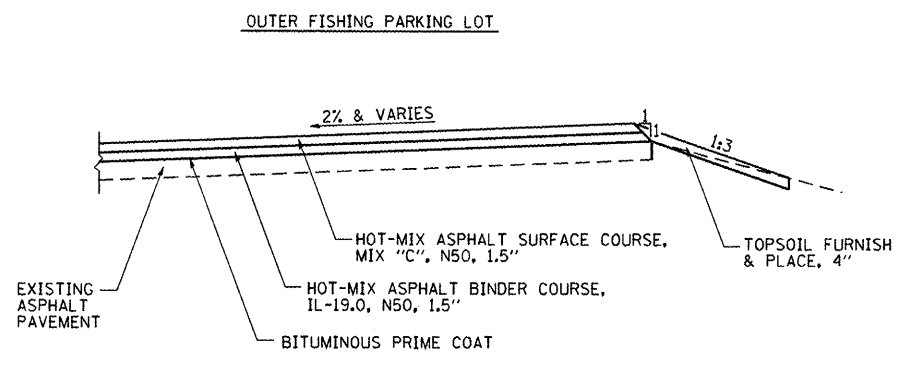
100% STATE

SUMMARY OF QUANTITIES		CONSTRUCTION CODE	
		0005	
CODE NO.	ITEM DESCRIPTION	UNIT	TOTAL QUANTITY
44000100	PAVEMENT REMOVAL	SO YD	650
54248510	CONCRETE COLLAR	CU YD	0.4
60100060	CONCRETE HEADWALL FOR PIPE DRAINS	EACH	1
60107600	PIPE UNDERDRAIN, 4"	FOOT	136
60260100	INLETS TO BE ADJUSTED	EACH	3
60603800	COMBINATION CONCRETE CURB AND GUTTER, TYPE B-6.12	FOOT	361
60618300	CONCRETE MEDIAN SURFACE, 4INCH	SO FT	270
66400105	CHAIN LINK FENCE, 4'	FOOT	149
67100100	MOBILIZATION	L SUM	1
X 72000100	SIGN PANEL - TYPE 1	SO FT	6.00
72400710	RELOCATE SIGN PANEL - TYPE 1	SO FT	8.25
X 78001100	PAINT PAVEMENT MARKING - LETTERS AND SYMBOLS	SO FT	14
X 78001110	PAINT PAVEMENT MARKING - LINE 4"	FOOT	2,330
81028320	UNDERGROUND CONDUIT, PVC, 1" DIA.	FOOT	60

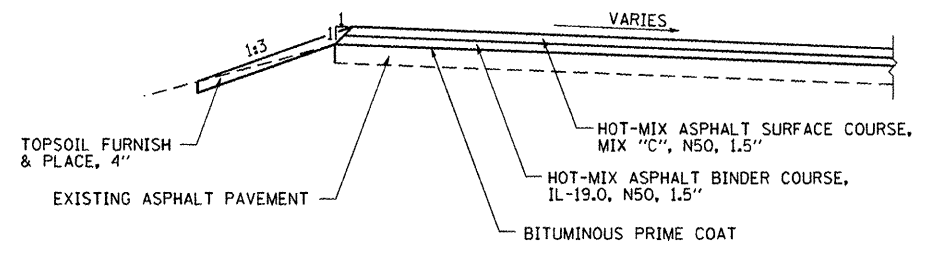
X SPECIALTY ITEM



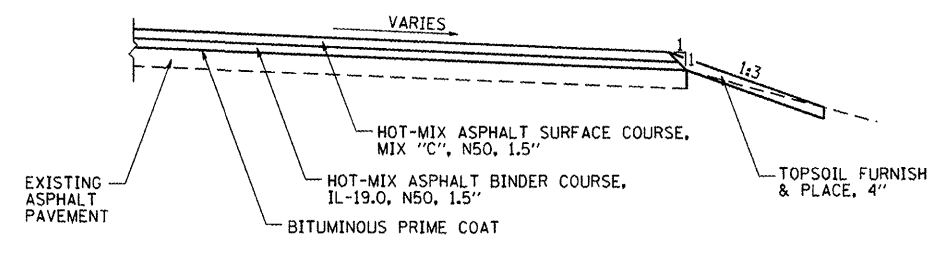
SECTION A-A
(SEE SITE PLAN)



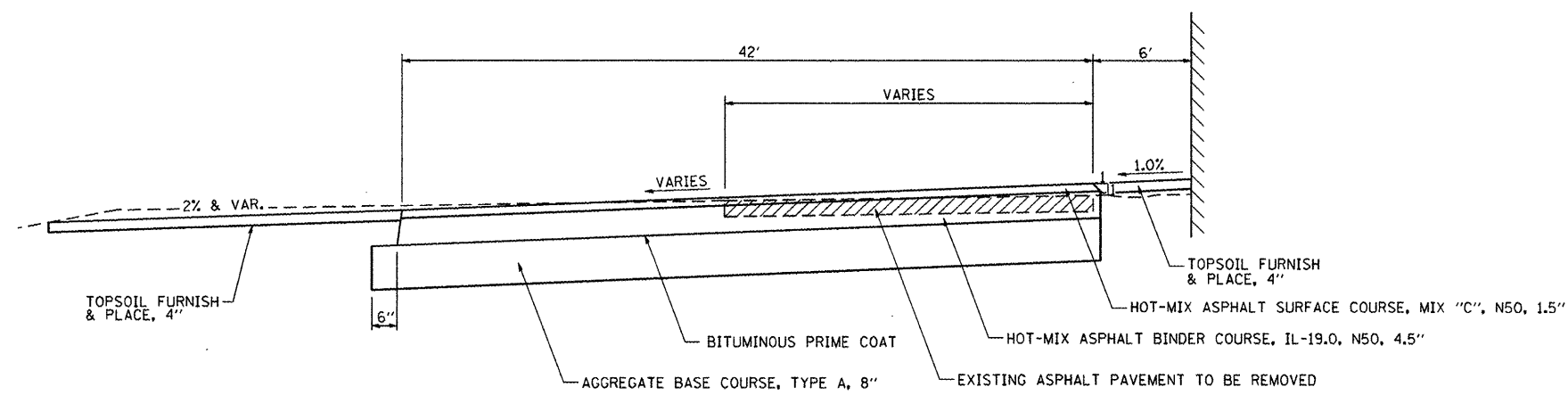
SECTION A-A
(SEE SITE PLAN)



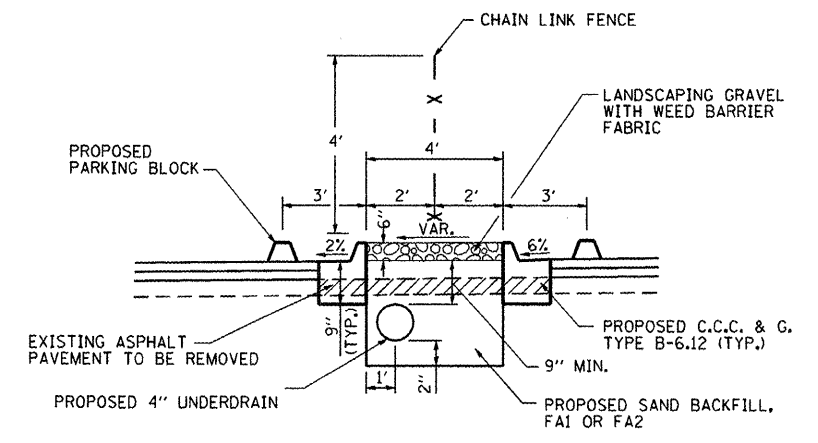
SECTION B-B
(SEE SITE PLAN)



SECTION B-B
(SEE SITE PLAN)



SECTION C-C
(SEE SITE PLAN)



SECTION THRU MEDIAN
(LOOKING WEST)

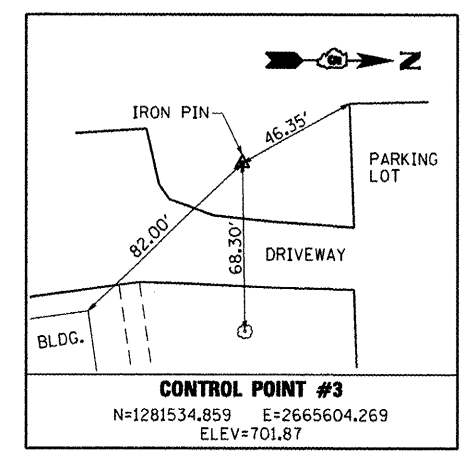
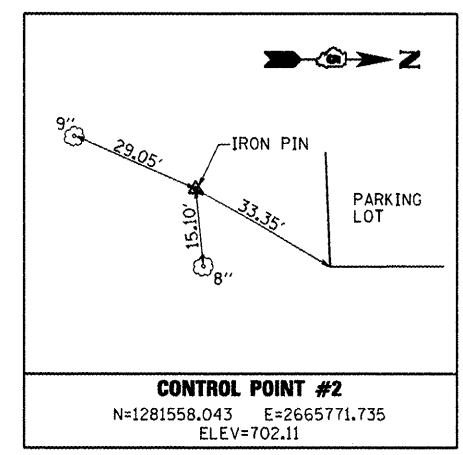
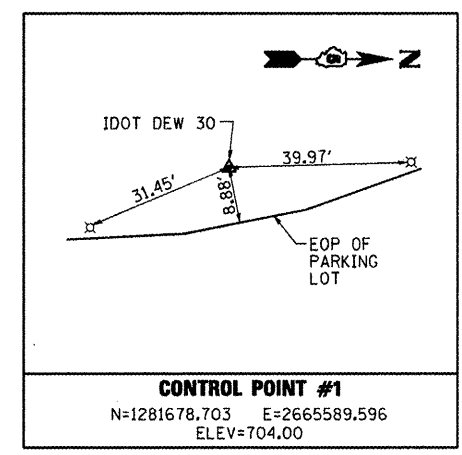
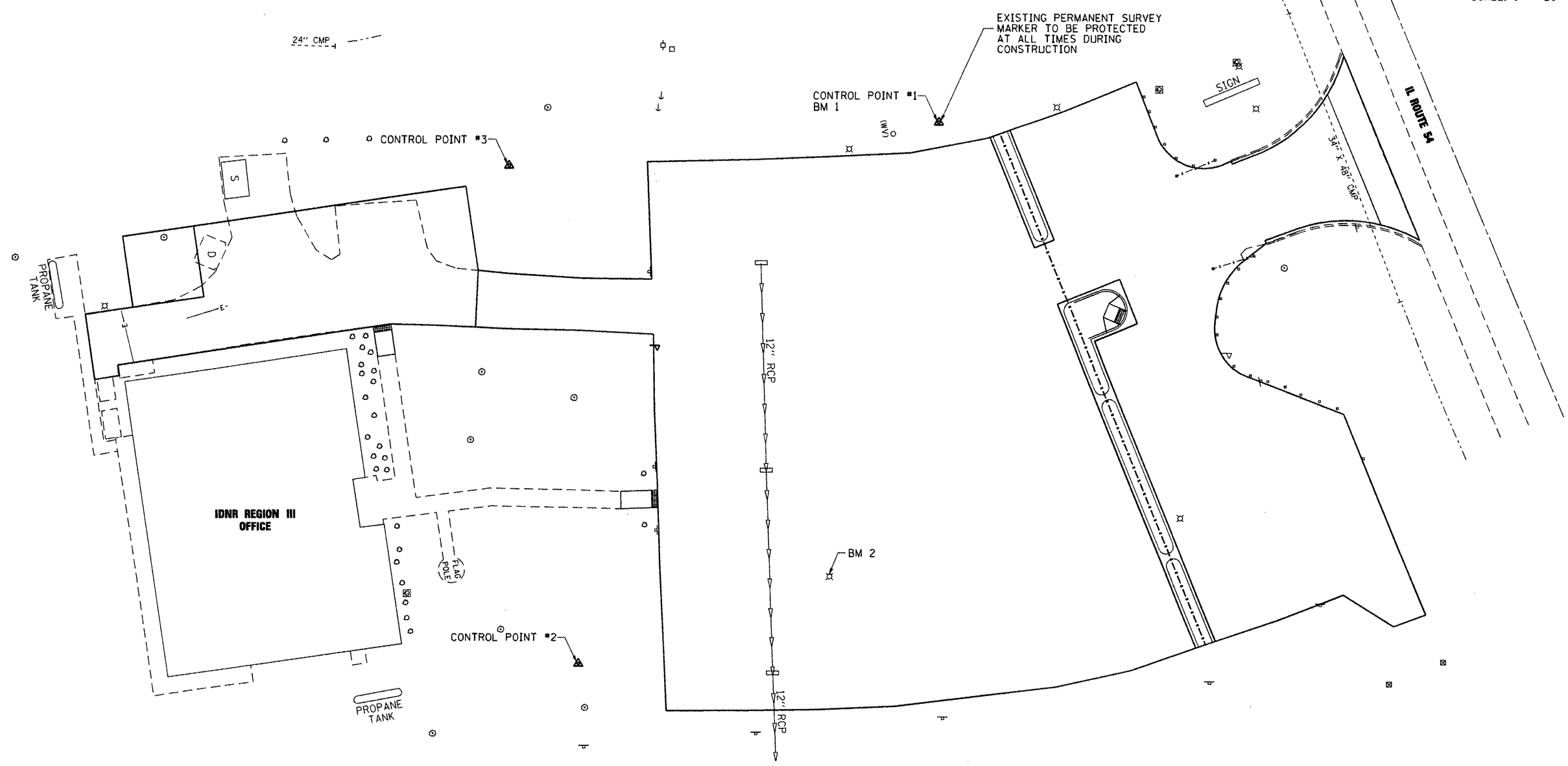
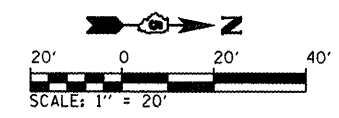
FILE NAME =	USER NAME = Kristin Timmons	DESIGNED - KLT	REVISED -
L:\IDOT\1106610\WG_2\Draw\CADD_Sheets\065_TYP_SEC.dgn		DRAWN - GLD	REVISED -
PLOT SCALE = 10,0000' / IN.		CHECKED - SPH	REVISED -
PLOT DATE = 4/6/2012		DATE - 4/6/2012	REVISED -

STATE OF ILLINOIS
DEPARTMENT OF TRANSPORTATION

TYPICAL SECTIONS & PAVEMENT STRUCTURE DETAILS
IDNR REGION III OFFICE - CLINTON

F.A. RTE.	SECTION	COUNTY	TOTAL SHEETS	SHEET NO.
N/A	PARK ROADS	DEWITT	13	5
CONTRACT NO. 46210			ILLINOIS FED. AID PROJECT	

SCALE: N.T.S. SHEET NO. 5 OF 13 SHEETS STA. TO STA.



BENCHMARK #1
 MONUMENT "IDOT DEW 30" AT LOCATION OF CONTROL POINT #1
 ELEVATION = 704.00

BENCHMARK #2
 SCRIBE "□" ON WEST SIDE OF SE LIGHT POLE BASE.
 ELEVATION = 703.99

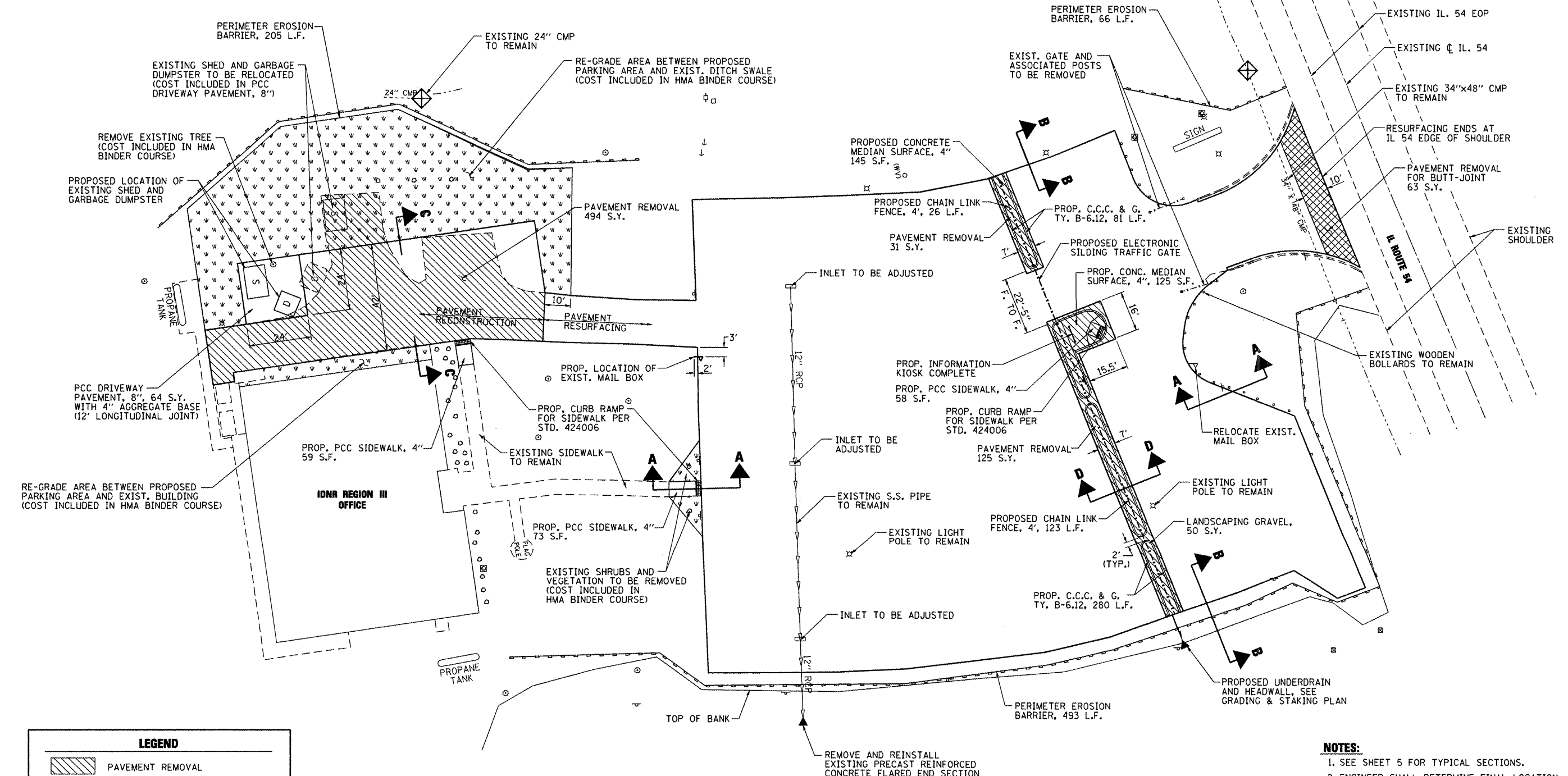
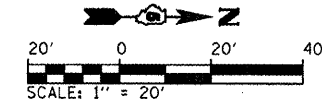
FILE NAME = I:\dot\1106610\wo_2\draw\cadd\sheet\00...	USER NAME = Krstin Timmons	DESIGNED - KLT	REVISED -
TIES_BM.SC.dgn		DRAWN - GLD	REVISED -
PLOT SCALE = 40.0000 / IN.		CHECKED - SPH	REVISED -
PLOT DATE = 4/6/2012		DATE - 4/6/2012	REVISED -

**STATE OF ILLINOIS
 DEPARTMENT OF TRANSPORTATION**

**SURVEY CONTROL TIES & BENCHMARKS
 IDNR REGION III OFFICE - CLINTON**

SCALE: 1" = 20' SHEET NO. 6 OF 13 SHEETS STA. TO STA.

F.A. RTE.	SECTION	COUNTY	TOTAL SHEETS	SHEET NO.
N/A	PARK ROADS	DEWITT	13	6
			CONTRACT NO. 46210	
ILLINOIS FED. AID PROJECT				



LEGEND	
	PAVEMENT REMOVAL
	TOPSOIL 4" & SEEDING CLASS 1A
	DETECTABLE WARNINGS
	PERIMETER EROSION BARRIER
	INLET AND PIPE PROTECTION

- NOTES:**
1. SEE SHEET 5 FOR TYPICAL SECTIONS.
 2. ENGINEER SHALL DETERMINE FINAL LOCATION OF PERIMETER EROSION BARRIER.
 3. ENGINEER SHALL DETERMINE LOCATIONS WHERE EXISTING PAVEMENT CONDITIONS REQUIRE LEVELING BINDER BEFORE RECEIVING OVERLAY.
 4. ALL EXISTING TURF AREAS DISTURBED DURING CONSTRUCTION SHALL BE SEEDED PER SECTION 250 OF THE STANDARD SPECIFICATIONS. COST INCLUDED IN HMA BINDER COURSE.

FILE NAME = L:\IDOT\1106610\W0.2\Draw\CADD_Sheets\07_SITE PLAN.dgn	USER NAME = Kristin Timmons	DESIGNED - KLT	REVISED -
PLOT SCALE = 40,0000' / IN.		DRAWN - GLD	REVISED -
PLOT DATE = 4/6/2012		CHECKED - SPH	REVISED -
		DATE - 4/6/2012	REVISED -

**STATE OF ILLINOIS
DEPARTMENT OF TRANSPORTATION**

SITE PLAN	
IDNR REGION III OFFICE - CLINTON	
SCALE: 1" = 20'	SHEET NO. 7 OF 13 SHEETS STA. TO STA.

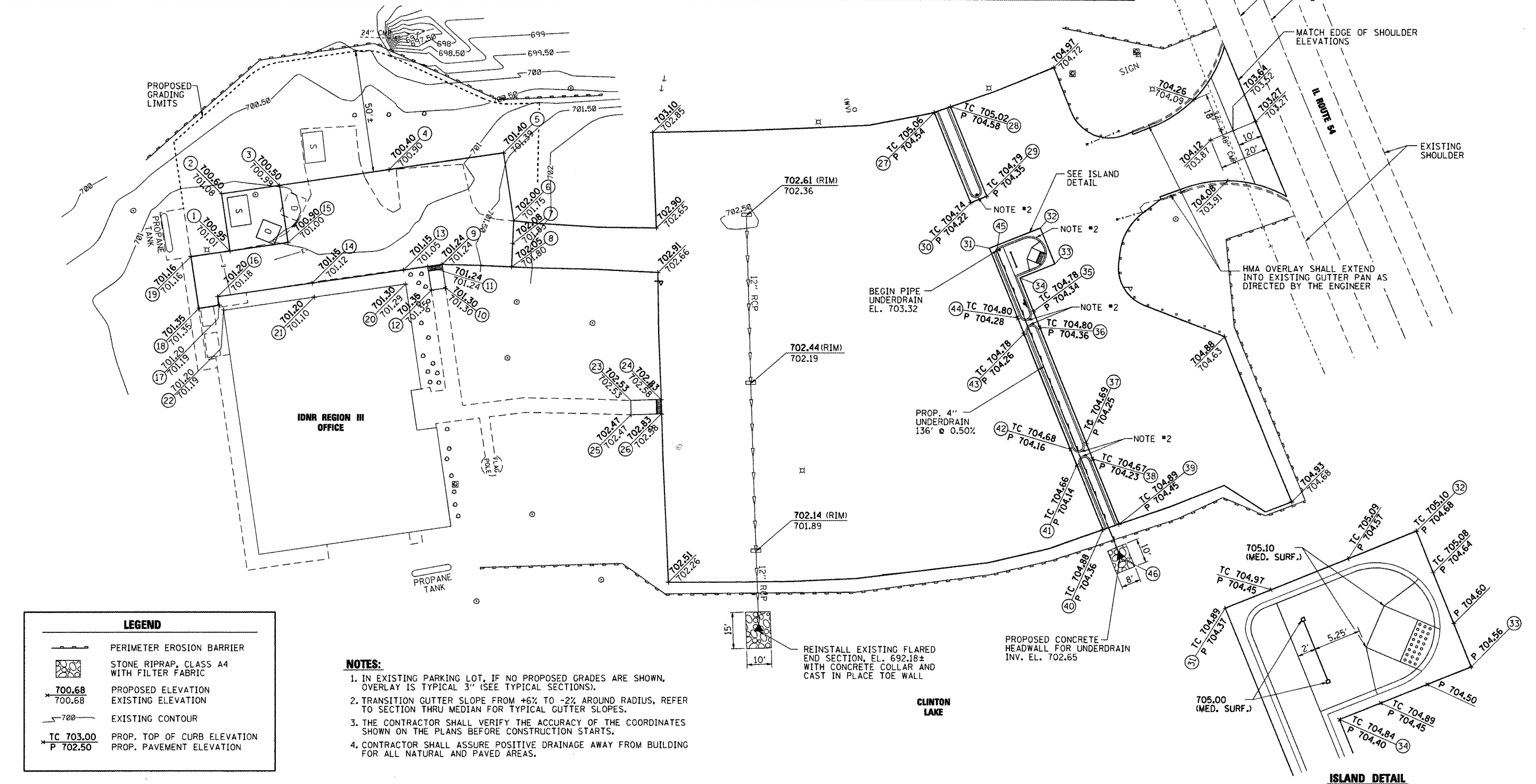
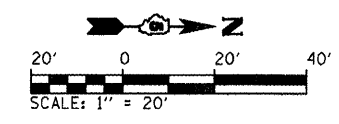
F.A. RTE.	SECTION	COUNTY	TOTAL SHEETS	SHEET NO.
N/A	PARK ROADS	DEWITT	13	7
CONTRACT NO. 46210				
ILLINOIS FED. AID PROJECT				

COORDINATE LISTING			
POINT NO.	NORTHING	EASTING	DESCRIPTION
1	1281409.125	2665651.829	EOP
2	1281405.656	2665628.081	EOP
3	1281429.403	2665624.611	EOP
4	1281473.931	2665618.106	EOP
5	1281520.437	2665611.311	EOP
6	1281524.538	2665639.381	EOP
7	1281524.114	2665648.909	EOP
8	1281523.690	2665658.437	EOP
9	1281495.524	2665657.413	EOP/SW
10	1281496.965	2665667.293	SW
11	1281489.646	2665658.246	EOP/SW
12	1281491.150	2665668.065	SW

COORDINATE LISTING			
POINT NO.	NORTHING	EASTING	DESCRIPTION
13	1281479.826	2665659.690	EOP
14	1281442.708	2665665.113	EOP
15	1281432.873	2665648.359	EOP
16	1281404.023	2665670.765	EOP
17	1281404.641	2665674.304	EOP
18	1281396.370	2665675.598	EOP
19	1281393.061	2665654.287	EOP
20	1281480.678	2665665.580	TURF
21	1281443.555	2665670.959	TURF
22	1281406.432	2665676.337	TURF
23	1281572.252	2665713.236	SW
24	1281584.545	2665712.853	EOP/SW

COORDINATE LISTING			
POINT NO.	NORTHING	EASTING	DESCRIPTION
25	1281572.306	2665719.108	SW
26	1281584.707	2665718.712	EOP/SW
27	1281695.857	2665594.615	EOP
28	1281702.462	2665592.277	EOP
29	1281717.250	2665628.979	EOP
30	1281710.758	2665631.595	EOP
31	1281718.399	2665650.559	EOP
32	1281739.269	2665642.150	EOP
33	1281745.249	2665656.990	EOP
34	1281730.872	2665662.783	EOP
35	1281736.462	2665676.657	EOP
36	1281739.079	2665683.150	EOP

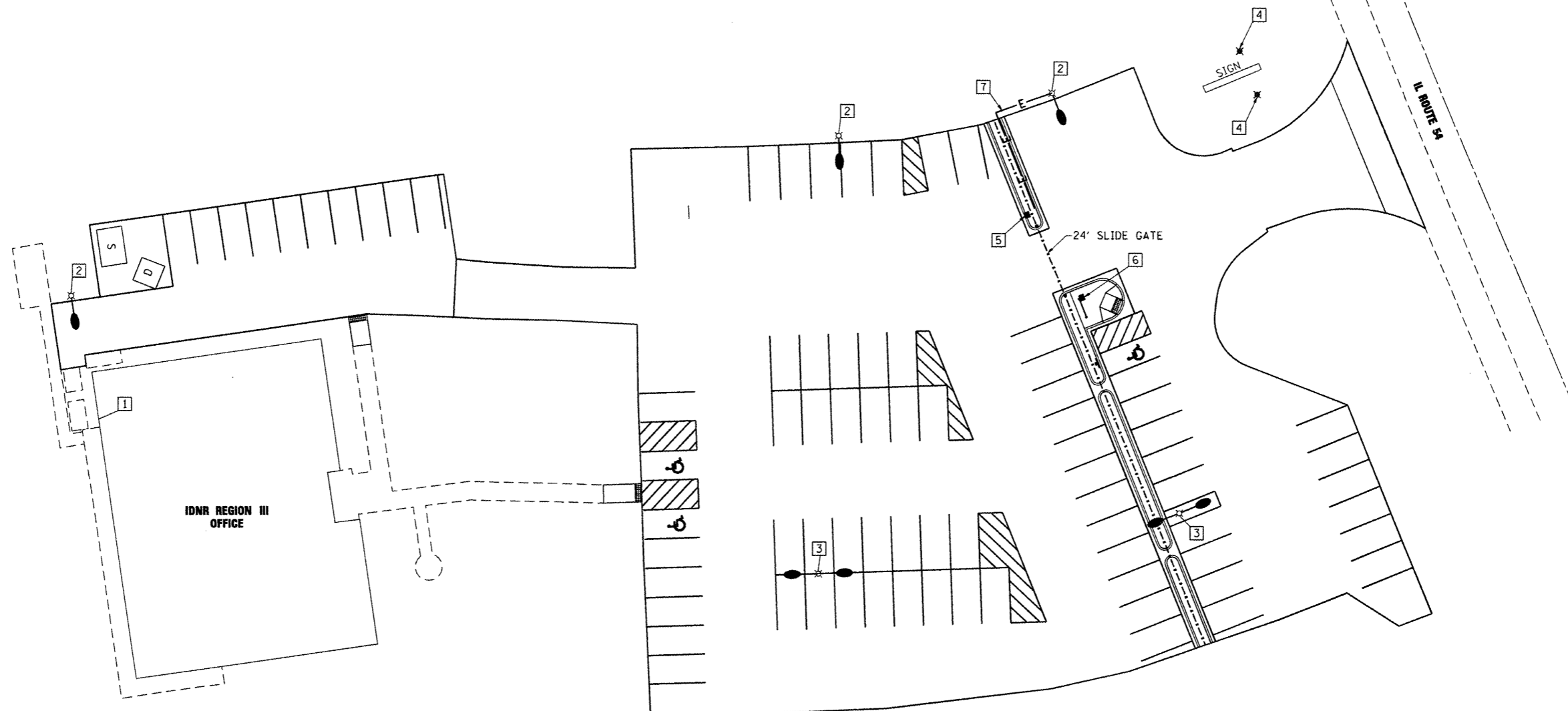
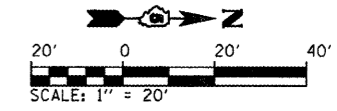
COORDINATE LISTING			
POINT NO.	NORTHING	EASTING	DESCRIPTION
37	1281758.147	2665730.473	EOP
38	1281760.763	2665736.965	EOP
39	1281771.604	2665763.868	EOP
40	1281764.988	2665766.178	EOP
41	1281754.271	2665739.582	EOP
42	1281751.654	2665733.089	EOP
43	1281732.586	2665685.766	EOP
44	1281729.970	2665679.273	EOP
45	1281721.505	2665651.577	UNDERDRAIN
46	1281772.336	2665777.726	UNDERDRAIN



LEGEND	
	PERIMETER EROSION BARRIER
	STONE RIPRAP, CLASS A4 WITH FILTER FABRIC
	700.68 PROPOSED ELEVATION
	*700.68 EXISTING ELEVATION
	700 EXISTING CONTOUR
	TC 703.00 PROP. TOP OF CURB ELEVATION
	*P 702.50 PROP. PAVEMENT ELEVATION

- NOTES:**
1. IN EXISTING PARKING LOT, IF NO PROPOSED GRADES ARE SHOWN, OVERLAY IS TYPICAL 3" (SEE TYPICAL SECTIONS).
 2. TRANSITION GUTTER SLOPE FROM +6% TO -2% AROUND RADIUS, REFER TO SECTION THRU MEDIAN FOR TYPICAL GUTTER SLOPES.
 3. THE CONTRACTOR SHALL VERIFY THE ACCURACY OF THE COORDINATES SHOWN ON THE PLANS BEFORE CONSTRUCTION STARTS.
 4. CONTRACTOR SHALL ASSURE POSITIVE DRAINAGE AWAY FROM BUILDING FOR ALL NATURAL AND PAVED AREAS.

FILE NAME = L:\DOT\118661\0\W\2\Draw\CADD_Sheets\08	USER NAME = Kristin Timmons	DESIGNED - KLT	REVISED -	STATE OF ILLINOIS DEPARTMENT OF TRANSPORTATION	GRADING & STAKING PLAN IDNR REGION III OFFICE - CLINTON		F.A. RTE. N/A	SECTION PARK ROADS	COUNTY DEWITT	TOTAL SHEETS 13	SHEET NO. 8	
	B:\PRIM_LOT_GRADE_STAKE.DGN	DRAWN - GLD	REVISED -		SCALE: 1" = 20'	SHEET NO. 8 OF 13 SHEETS	STA. TO STA.	ILLINOIS FED. AID PROJECT				
	PLOT SCALE = 40,0000 / IN.	CHECKED - SPH	REVISED -		CONTRACT NO. 46210							
	PLOT DATE = 4/6/2012	DATE - 4/6/2012	REVISED -									



CLINTON
LAKE

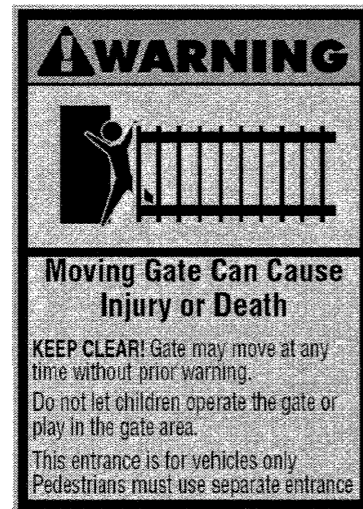
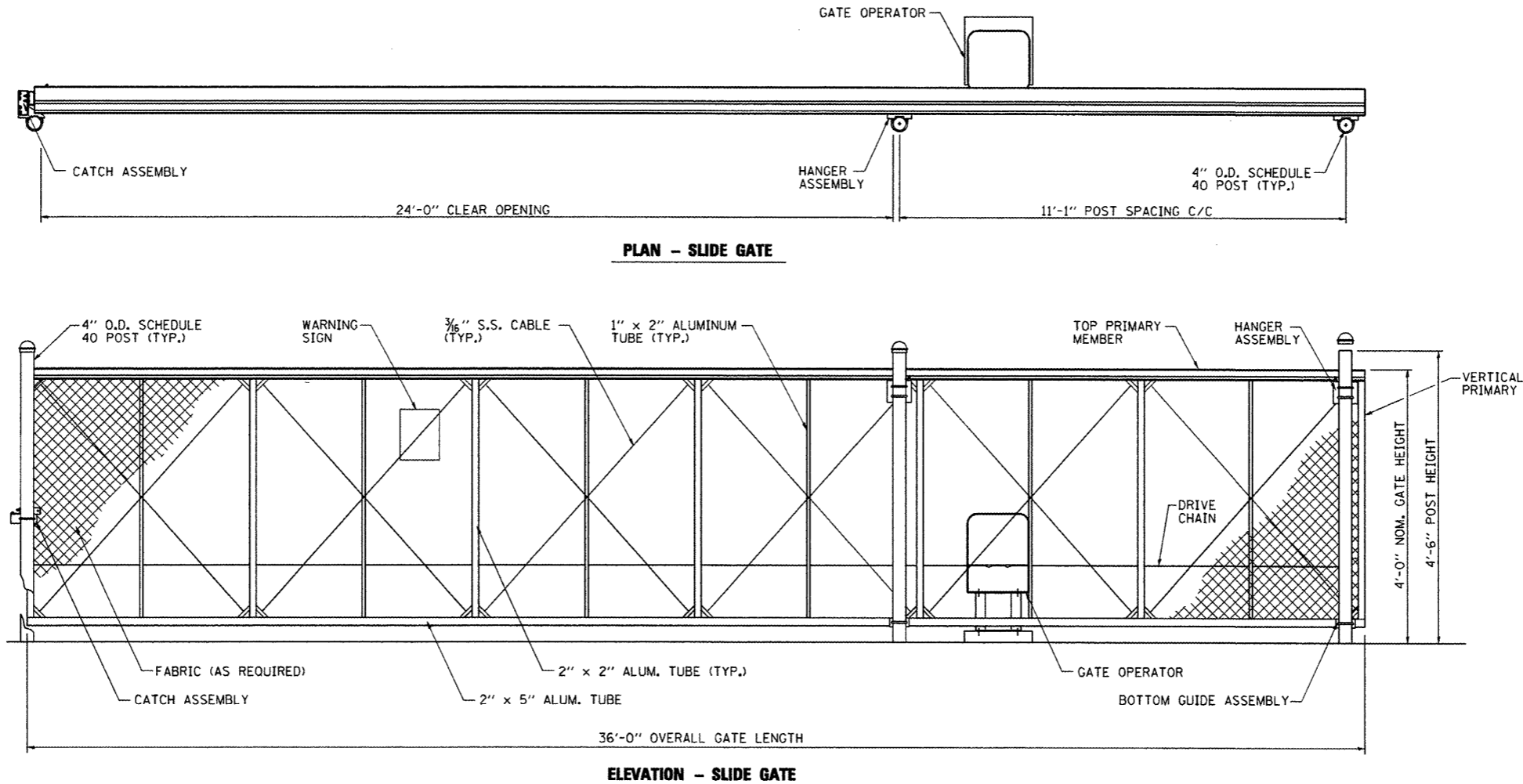
GENERAL NOTES:

1. ALL ELECTRICAL EQUIPMENT SHALL BE INSTALLED IN CONFORMANCE WITH NFPA70 (NEC MOST CURRENT ISSUE), THE RESPECTIVE EQUIPMENT MANUFACTURER'S DIRECTIONS AND ALL OTHER APPLICABLE LOCAL CODES, LAWS, ORDINANCES AND REQUIREMENTS IN FORCE. ANY INSTALLATIONS WHICH VOID THE U.L. LISTING (OR THIRD PARTY LISTING) AND/OR THE MANUFACTURER'S WARRANTY OF A DEVICE SHALL NOT BE PERMITTED.
2. THESE PLANS ARE BASED ON FIELD INSPECTIONS AND, IN PART, INFORMATION SUPPLIED BY OTHERS. THE CONTRACTOR SHALL FIELD VERIFY SITE CONDITIONS AS REQUIRED PRIOR TO COMMENCING WORK AND IMMEDIATELY NOTIFY THE OWNER AND ENGINEER IF CONDITIONS ARE OBSERVED WHICH DEVIATE FROM CONDITIONS AS SHOWN.
3. THE CONTRACTOR SHALL ENSURE THAT THE EXISTING POLES AND ARMS ARE COMPATIBLE WITH NEW LUMINAIRES. MAKE ADJUSTMENTS AS NEEDED AND PROVIDE ALL MOUNTING HARDWARE NECESSARY FOR PROPER MOUNTING.
4. EXISTING LUMINAIRE AND LAMPS SHALL BE DISPOSED OF OFF SITE.
5. EACH LUMINAIRE IS CONTROLLED BY INDIVIDUAL PHOTOELECTRIC (PHOTOCELL) CONTROL.
6. EXISTING POLES ARE APPROXIMATELY 35 FEET IN HEIGHT, ROUND TAPERED AL WITH APPROXIMATELY 6 FOOT TRUSS ARMS.

KEYED NOTES:

- 1 EXISTING PANELBOARD WITH TWO 20 AMP, 120VAC, SINGLE POLE CIRCUIT BREAKERS FOR LIGHTS PARKING LOT NORTH AND LIGHTS PARKING LOT SOUTH.
- 2 EXISTING POLE, ONE FIXTURE ON POLE ARM TO BE REMOVED AND REPLACED WITH NEW LUMINAIRE. RECONNECT EXISTING CONDUCTORS.
- 3 EXISTING POLE, TWO FIXTURES AT 180 DEGREES ON POLE ARMS TO BE REMOVED AND REPLACED WITH TWO NEW LUMINAIRE. RECONNECT TO EXISTING CONDUCTORS.
- 4 EXISTING FLOOD LIGHT TO BE REMOVED AND REPLACED WITH NEW LUMINAIRE, RECONNECT TO EXISTING CONDUCTORS.
- 5 MOTORIZED GATE OPERATOR 1/2 HP, 120VAC WITH BUILT-IN RECEIVER.
- 6 GATE ACCESS KEY PAD MOUNTED TO POST OF KIOSK.
- 7 2 #10 THWN, 1 #10 GND IN 1" PVC CONDUIT, BURY 24" BELOW GRADE. INTERCEPT LIGHTING CIRCUIT FOR 120VAC POWER TO GATE OPERATOR.

FILE NAME = L:\IDOT\1106610\W0_2\Draw\CADD_Sheets\012\LIGHT_ELECT_FLAN.dgn	USER NAME = Kristin Timmons	DESIGNED - LDW	REVISED -	STATE OF ILLINOIS DEPARTMENT OF TRANSPORTATION	LIGHTING & ELECTRICAL PLAN IDNR REGION III OFFICE - CLINTON			F.A. RTE.	SECTION	COUNTY	TOTAL SHEETS	SHEET NO.
	PLDT SCALE = 40.0000' / IN.	DRAWN - GLD	REVISED -		N/A	PARK ROADS	DEWITT	13	9			
	PLDT DATE = 4/6/2012	CHECKED - SPH	REVISED -		SCALE: 1" = 20' SHEET NO. 9 OF 13 SHEETS STA. TO STA.			CONTRACT NO. 46210				
		DATE - 4/6/2012	REVISED -					ILLINOIS FED. AID PROJECT				



WARNING SIGN DETAIL

UL 235 COMPLIANCE NOTES

GATE INSTALLATION SHALL COMPLY WITH ALL REQUIREMENTS OF UL 235, INCLUDING, BUT NOT LIMITED TO:

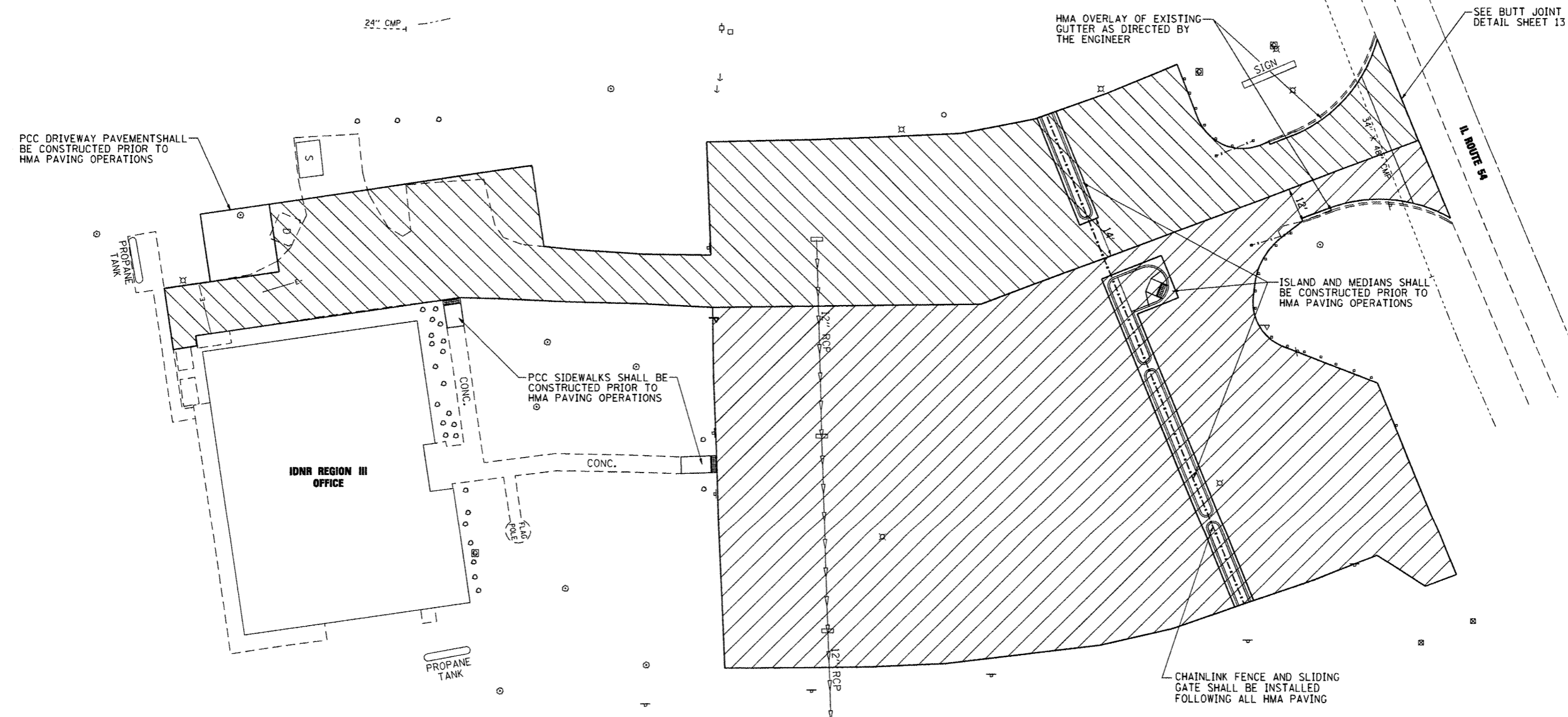
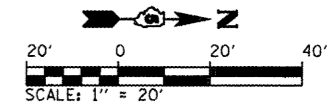
1. ALL OPENINGS OF THE SLIDE GATE ARE GUARDED OR SCREENED FROM THE BOTTOM OF THE GATE TO A MINIMUM OF 4 FEET ABOVE GROUND TO PREVENT A 2-1/4" DIAMETER SPHERE FROM PASSING THROUGH THE OPENINGS ANYWHERE IN THE GATE, AND IN THAT PORTION OF THE ADJACENT FENCE THAT THE GATE COVERS IN THE OPEN POSITION.
2. ALL EXPOSED PINCH POINTS ARE ELIMINATED OR GUARDED AND GUARDING IS SUPPLIED FOR ALL EXPOSED ROLLERS.
3. A WARNING SIGN (SEE DETAIL, THIS SHEET) MUST BE AFFIXED TO BOTH SIDES OF THE SLIDE GATE.

NOTES

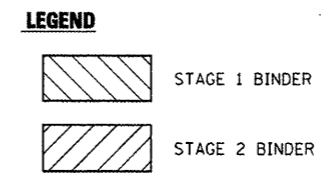
1. CANTILEVERED GATE SHALL BE SUFFICIENTLY RIGID TO WITHSTAND FLEXING OR BENDING DURING WINDY CONDITIONS. CONTRACTOR SHALL PROVIDE STIFFENERS, STRUCTURAL SHAPES IN EXCESS OF THE MINIMUM SPECIFIED DIMENSIONS OR ADDITIONAL ROLLERS AND POSTS SUFFICIENT TO PREVENT DISPLACEMENT OF THE GATE BY WIND OR BY UNAUTHORIZED PERSONNEL.
2. CONTRACTOR SHALL PROVIDE AND INSTALL GATE AS COMPLETE WORKING UNIT. THE GATE WORK SHALL INCLUDE, BUT NOT BE LIMITED TO: GATE, OPERATOR, DIGITAL CODE CONTROL AND POWER CABLES, CONDUIT, TRENCHING, CIRCUIT BREAKERS, AND ALL CONNECTIONS, LABOR AND MATERIALS NECESSARY TO COMPLETE OPERATION.
3. LOCATION OF THE GATE OPERATOR SHALL BE AS RECOMMENDED BY THE MANUFACTURER.
4. THE FABRIC TYPE AND FINISH OF THE GATE SHALL MATCH PROPOSED FENCE, BLACK COATED IN COLOR, OR AS DIRECTED BY THE ENGINEER.
5. ALL SLIDING GATES SHALL HAVE ALL ROLLERS ENCLOSED IN STEEL OR PLASTIC SHROUDS TO PREVENT ACCIDENTAL INJURY.

LOCATIONS, DETAILS AND CHARACTER OF EQUIPMENT SHOWN ON THIS SHEET IS GENERIC. EQUIPMENT LOCATIONS SHALL BE AS RECOMMENDED BY THE EQUIPMENT MANUFACTURER.

FILE NAME =	USER NAME = Kristin Timmons	DESIGNED - LDW	REVISED -	STATE OF ILLINOIS DEPARTMENT OF TRANSPORTATION	ELECTRICAL DETAILS IDNR REGION III OFFICE - CLINTON	F.A. RTE.	SECTION	COUNTY	TOTAL SHEETS	SHEET NO.	
I:\dot\1106610\wo_2\draw\cadd\sheets\8X	_GATE_DET_ELECT.dgn	DRAWN - GLD	REVISED -			N/A	PARK ROADS	DEWITT	13	10	
	PLOT SCALE = 40.0000' / IN.	CHECKED - SPH	REVISED -			SCALE: 1" = 20'		SHEET NO. 9 OF 13 SHEETS		STA. TO STA.	
	PLOT DATE = 4/6/2012	DATE - 4/6/2012	REVISED -			CONTRACT NO. 46210					
ILLINOIS FED. AID PROJECT											



- NOTES:**
1. CONTRACTOR SHALL PROVIDE DRUMS AND BARRICADES TO DIRECT TRAFFIC AT PARKING LOT ENTRANCE.
 2. LUMINAIRE REPLACEMENT SHALL BE DONE PRIOR TO THE START OF STAGE 1.
 3. HMA SURFACE COURSE SHALL ALL BE PLACED IN ONE OPERATION ON THE SAME DAY.
 4. CONTRACTOR SHALL MAINTAIN ACCESS TO AND FROM IL ROUTE 54 AND THE REGION III OFFICE BUILDING AT ALL TIMES.
 5. ACCESS TO TURF AREA WEST OF EXISTING PARKING LOT SHALL BE MAINTAINED FOR TEMPORARY IDNR EMPLOYEE PARKING DURING PAVING OPERATIONS.



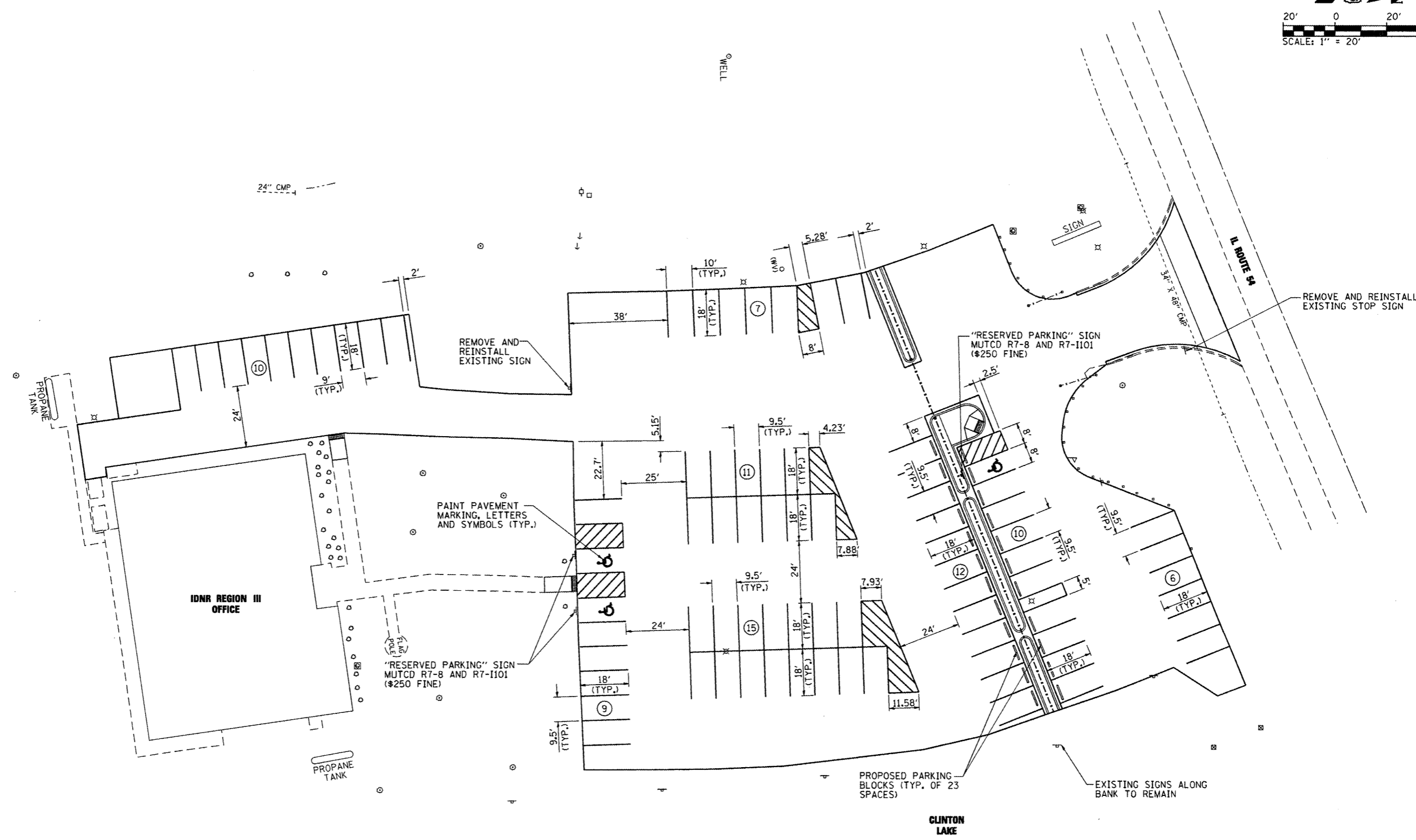
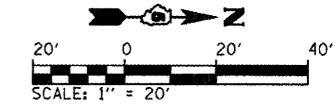
FILE NAME =	USER NAME = Kristin Timmons	DESIGNED - KLT	REVISED -
I:\dot\1106610\wo_2\draw\cadd\sheet\007_STAGING_MOT.dgn		DRAWN - GLD	REVISED -
PLOT SCALE = 40.0000' / IN.		CHECKED - SPH	REVISED -
PLOT DATE = 4/6/2012		DATE - 4/6/2012	REVISED -

**STATE OF ILLINOIS
DEPARTMENT OF TRANSPORTATION**

**CONSTRUCTION STAGING PLAN
IDNR REGION III OFFICE - CLINTON**

SCALE: 1" = 20' SHEET NO. 10 OF 13 SHEETS STA. TO STA.

F.A. RTE.	SECTION	COUNTY	TOTAL SHEETS	SHEET NO.
N/A	PARK ROADS	DEWITT	13	11
CONTRACT NO. 46210				
ILLINOIS FED. AID PROJECT				



NOTES:

1. ALL PAVEMENT MARKING LINES SHALL BE PAINTED 4" SOLID YELLOW LINES.
2. ALL STRIPED BUFFER AREAS SHALL BE STRIPED WITH LINES AT 3' C-C WITH 45° ANGLE AS SHOWN ON PLAN.
3. ALL DIMENSIONS ARE TO CENTER OF PAVEMENT MARKING LINE.

PARKING TOTALS

LOT	SPACES
OUTER	16 (1 ACCESSIBLE)
INNER OFFICE	54 (2 ACCESSIBLE)
EMPLOYEE SIDE	10
TOTAL	80 (3 ACCESSIBLE)

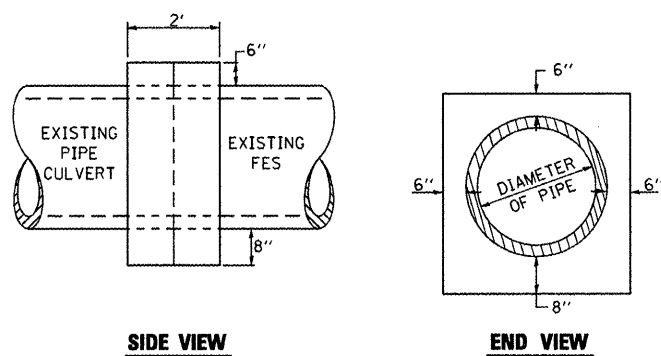
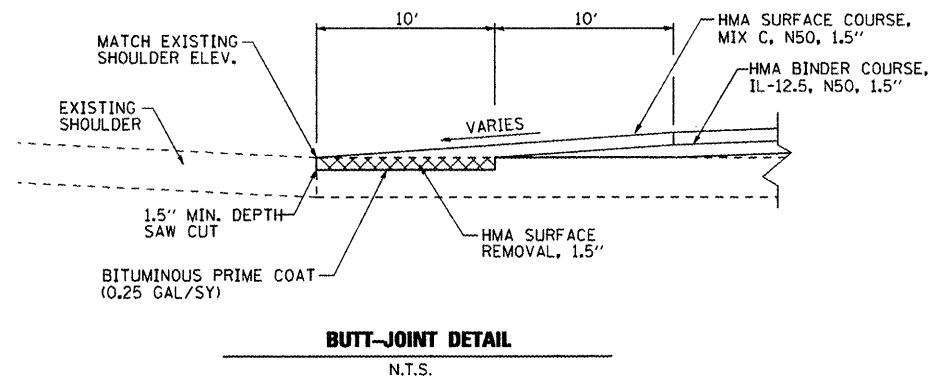
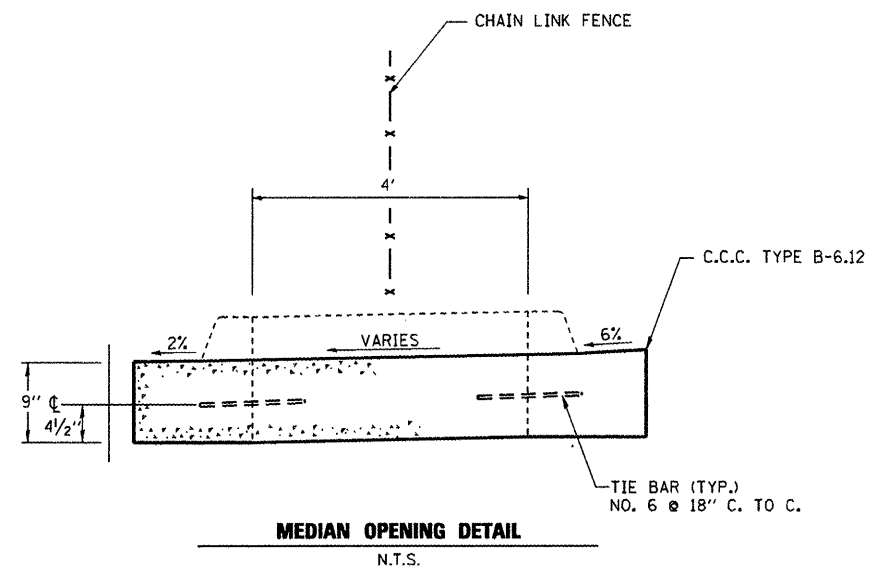
FILE NAME = L:\JDDT\1106610\WO.2\Draw\CADD_Sheets\013_PAV_MK_PLAN.dgn	USER NAME = Kristin Timmons	DESIGNED - KLT	REVISED -
		DRAWN - GLD	REVISED -
		CHECKED - SPH	REVISED -
		DATE - 4/6/2012	REVISED -

**STATE OF ILLINOIS
DEPARTMENT OF TRANSPORTATION**

**PAVEMENT MARKING / SIGNING PLAN
IDNR REGION III OFFICE - CLINTON**

SCALE: 1" = 20' SHEET NO. 11 OF 13 SHEETS STA. TO STA.

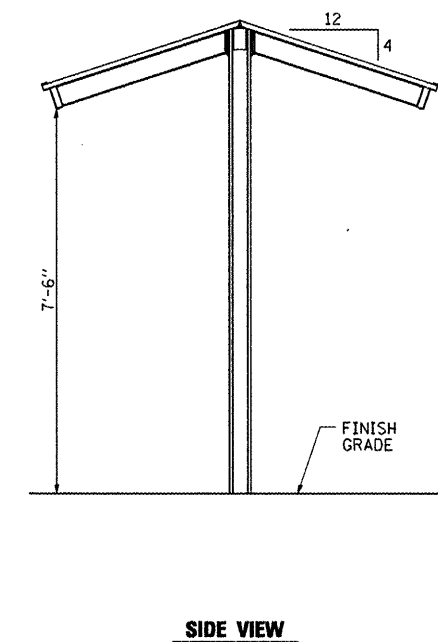
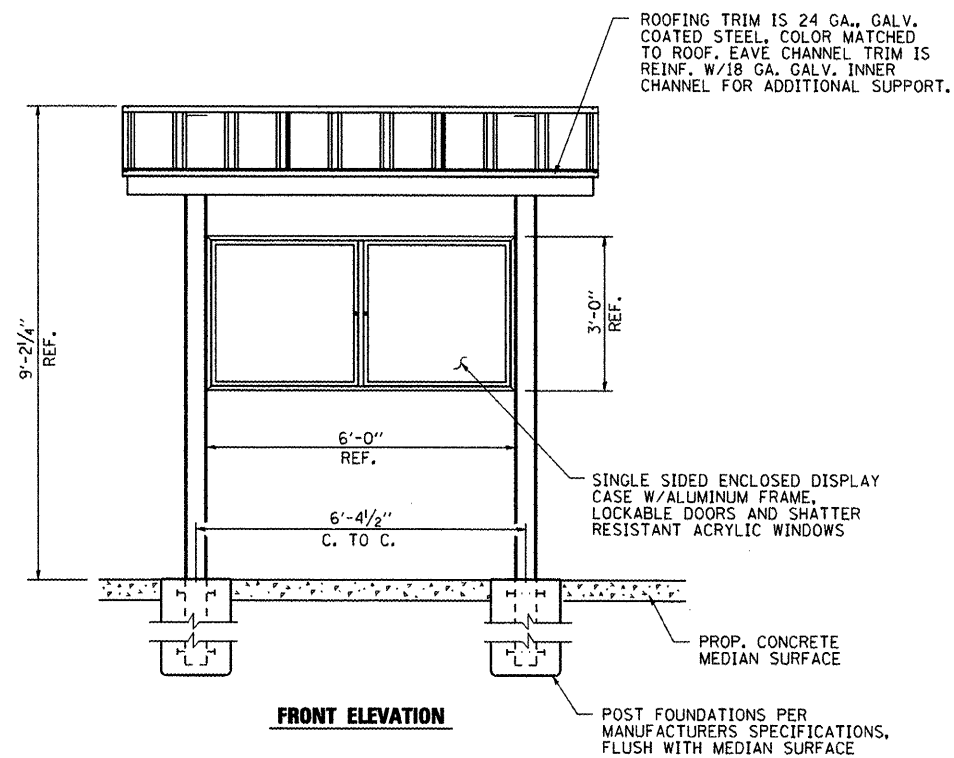
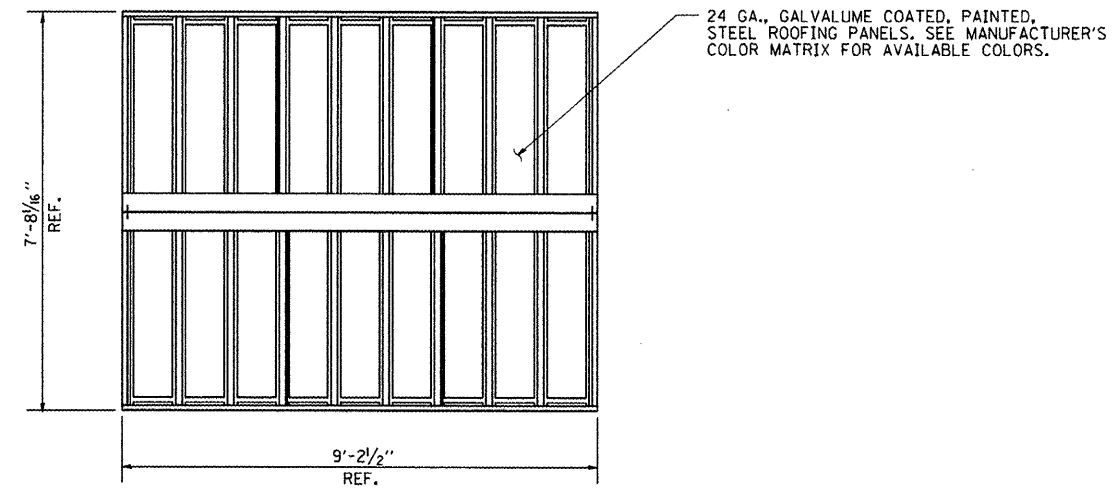
F.A. RTE. N/A	SECTION PARK ROADS	COUNTY DEWITT	TOTAL SHEETS 13	SHEET NO. 12
				CONTRACT NO. 46210
ILLINOIS FED. AID PROJECT				



TABULATION

DIAMETER OF PIPE	CL SI CONC CU YDS EST
12"	0.32

THE CONCRETE COLLAR SHALL BE PAID FOR AT THE CONTRACT UNIT PRICE PER CUBIC YARD FOR CONCRETE COLLAR, AS SHOWN ON THE PLANS.
CLASS SI CONCRETE SHALL BE USED THROUGHOUT.



INFORMATION KIOSK / SUN SHELTER DETAILS
N.T.S.

FILE NAME = I:\dots\1106610\wo_2\draw\cadd\sheet\002_MISC_CONST.DTL.S.dgn	USER NAME = Kristin Timmons	DESIGNED - KLT	REVISED -
PLOT SCALE = 40.0000 "/ IN.	CHECKED - SPH	DATE - 4/6/2012	REVISED -
PLOT DATE = 4/6/2012			REVISED -

STATE OF ILLINOIS
DEPARTMENT OF TRANSPORTATION

MISCELLANEOUS CONSTRUCTION DETAILS IDNR REGION III OFFICE - CLINTON			
SCALE: N.T.S.	SHEET NO. 12 OF 13 SHEETS	STA.	TO STA.

F.A. RTE.	SECTION	COUNTY	TOTAL SHEETS	SHEET NO.
N/A	PARK ROADS	DEWITT	13	13
CONTRACT NO. 46210				
ILLINOIS FED. AID PROJECT				