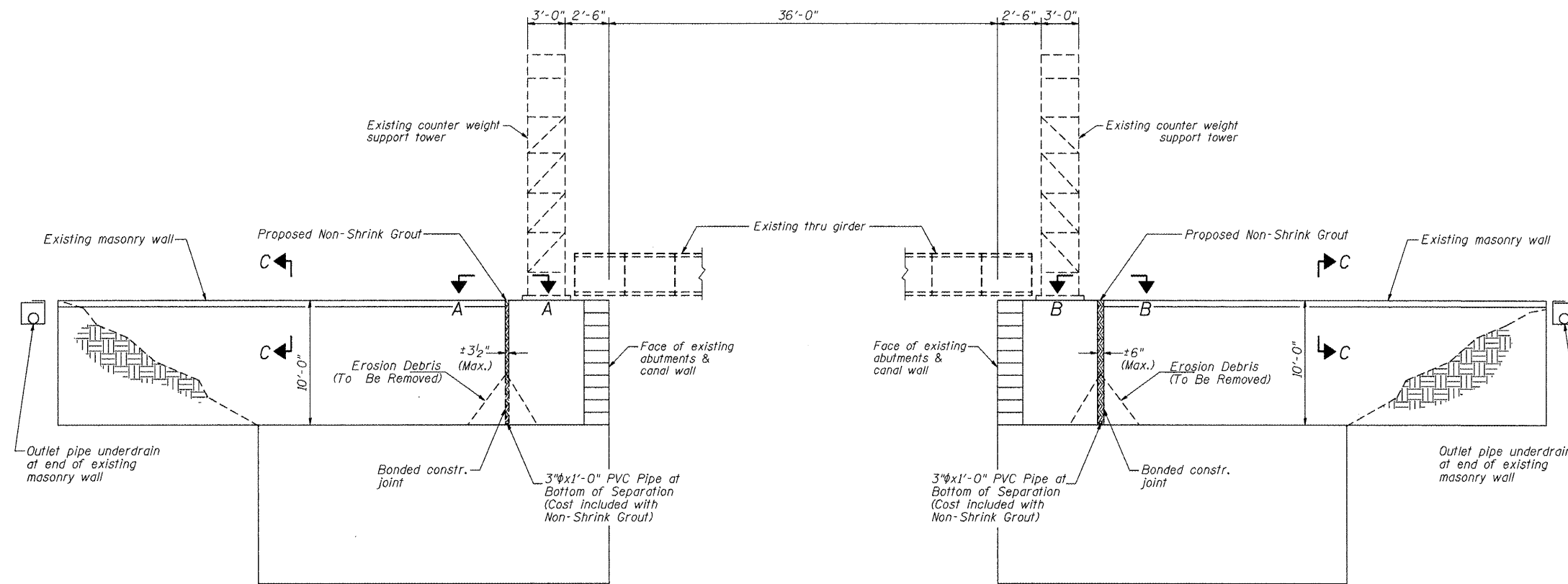


**SEQUENCE OF CONSTRUCTION:
(Joint Repair)**

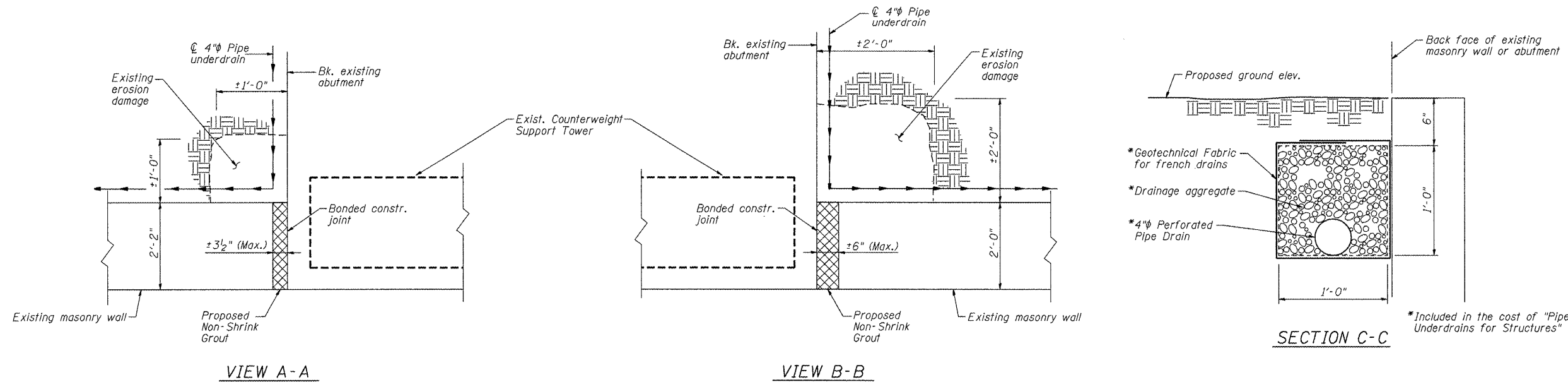
1. Clean Debris out of separation between Masonry walls & back of Abutments, from front face of walls.
2. Place 3"φx1'-0" PVC Pipe* at bottom of separation. Apply Bonding Agent to both faces of separation.
3. Fill opening with Non-Shrink grout.
4. Install Pipe Underdrains for Structures.
5. Finish surface to match adjacent landscaping.

*Included in the cost of "Non-Shrink Grout"



SOUTH ABUTMENT
(Looking West)

NORTH ABUTMENT
(Looking West)



VIEW A-A

VIEW B-B

SECTION C-C

*Included in the cost of "Pipe Underdrains for Structures"

Material excavated for placement of Pipe Underdrains shall be used to backfill Existing Erosion Damage and is included in the cost of "Pipe Underdrains for Structures"

FILE NAME =	USER NAME =	DESIGNED - BPD	REVISED -
		CHECKED - WLB	REVISED -
		DRAWN - BPD	REVISED -
		CHECKED - BPD	REVISED -

**STATE OF ILLINOIS
DEPARTMENT OF TRANSPORTATION**

**ABUTMENT DETAILS
STRUCTURE NO. 006-9952**

SHEET NO. 2 OF 2 SHEETS

F.A. RTE.	SECTION	COUNTY	TOTAL SHEETS	SHEET NO.
	PARK ROADS	BUREAU	28	22
			CONTRACT NO. 46211	
ILLINOIS FED. AID PROJECT				